

King Road

See Burm 406 for leads.

(1473)

INDEXED ON MAP

E Road No 175

We did not dig for
monument here

Eo Line Stone

1480'

Ludlow Road

July - 29 - 1924

Warm

F. Wright,
W. Smucker
Ed. Cole

26+20

Maze

200' low place
for culvert.STARTS 20'
from E

2+00

Culvert
needed

(1000)

E N 77 E

LESTER KING

Land Line

HARTZLER

1+00

Small
Culvert
needed.

445.50

122

Stone

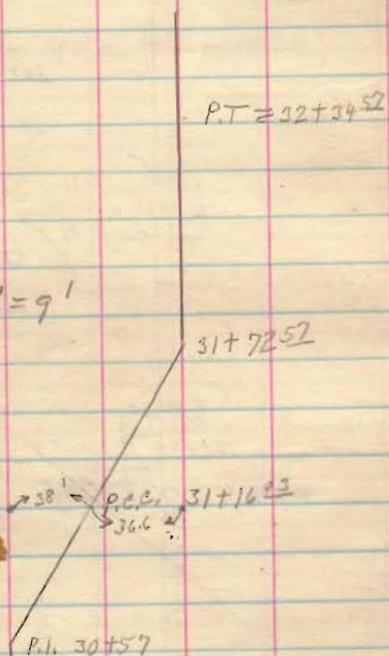
17-11" past.

20'

This stone about 12" under
present gravel NOTE DATE

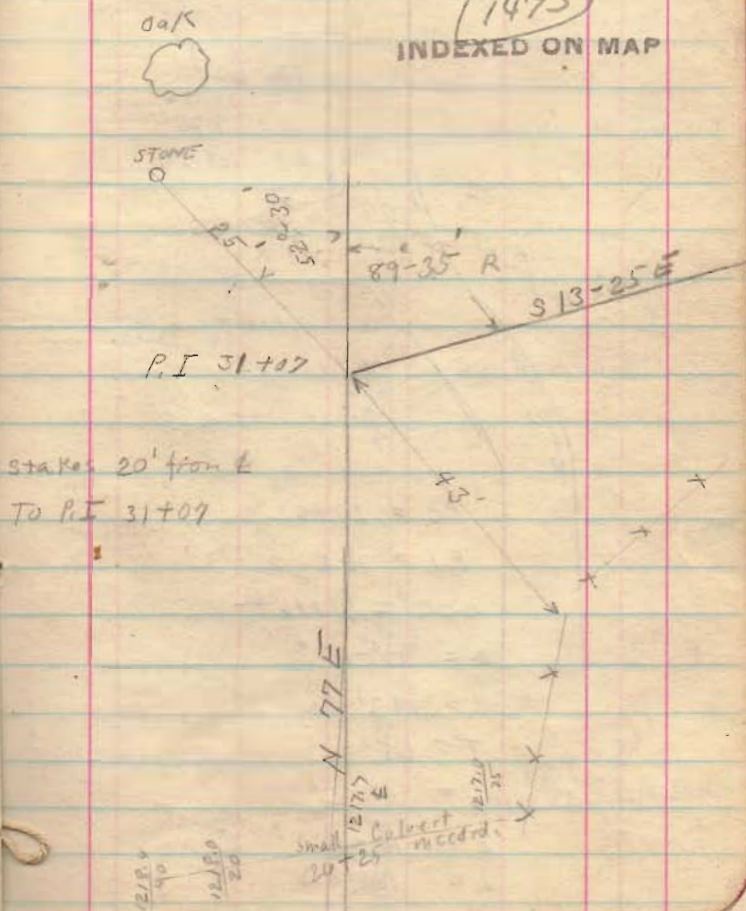
King Road

$\Delta = 35^{\circ}-48'$
 $R = 192'$
 $T = 62'$
 $D = 30^{\circ}-12'$
 $E = 9.76$
 $L = 118.54$
 Angle for $1' = 9'$



$\Delta = 37^{\circ}-15'$
 $R = 193'$
 $T = 65'$
 $D = 30^{\circ}-2'$
 $E = 10.66$
 Angle for $1' = 9'$
 $L = 124.03$
 P.C. 29+92

1473
 INDEXED ON MAP



KING Road

$$P.T. = 32+34.5^{\circ}$$

$$P.I. = 31+22^{\circ}$$

$$P.C.C. = 31+16^{\circ}$$

$$A = 35-48'$$

$$R = 192'$$

$$T = 62'$$

$$D = 30-12'$$

$$E = 9.76$$

$$L = 118.54$$

P.C.C.

 $21' \rightarrow 31.5'$

No Culvert is

small educt needed

about 20' x 20'

$$P.C. = 29+92$$

$$P.I. = 30+57$$

$$P.C.C. = 31+16^{\circ}$$

$$A = 37-15'$$

$$R = 193'$$

$$T = 65'$$

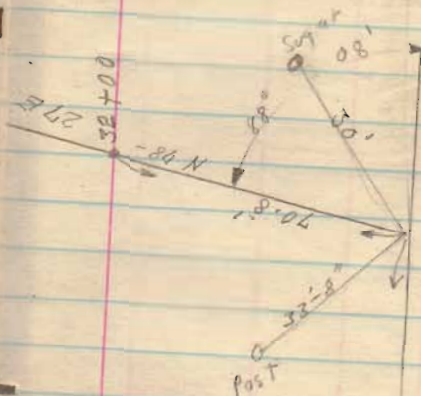
$$D = 30-2'$$

$$E = 10.66$$

$$L = 124.03$$

7-29-24

(Sta 32 to 33 Start Sta. 95')

Stakes 20' from $\frac{1}{2}$ 

P.E. 31+30.2

P.I. D.B.T. 94-9" S 13-25 E

INDEXED ON MAP

(1473)

King Road

(34+50 low
small culvert?)

N 78-27 E

(1473)
INDEXED ON MAP

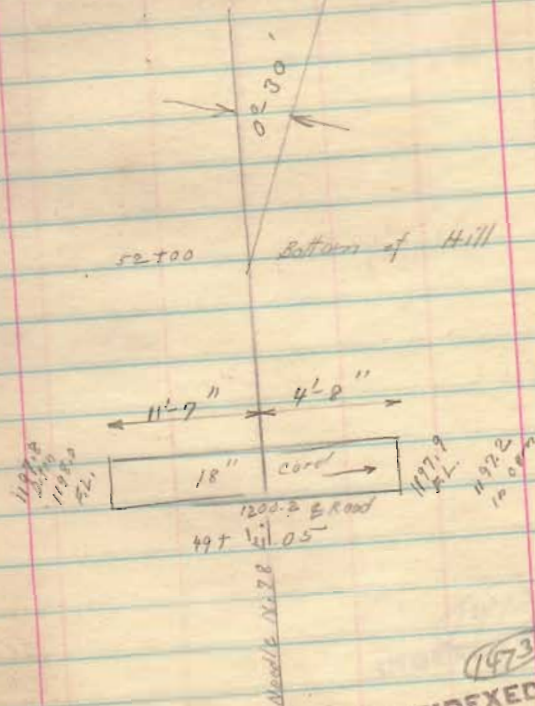
King Road

1473
 INDEXED ON MAP

37 + 95

1252-314
 PL.
 1252-100
 PL.

King Road


 (1473)
 INDEXED ON MAP

King Road

8-18'
0°-18'

56+50 Top of Hill

(1473)
INDEXED ON MAP

King Road



1473
INDEXED ON MAP

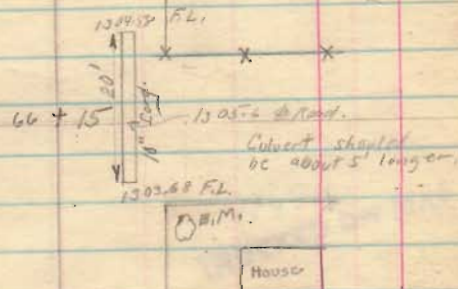
King Road

2°-28'

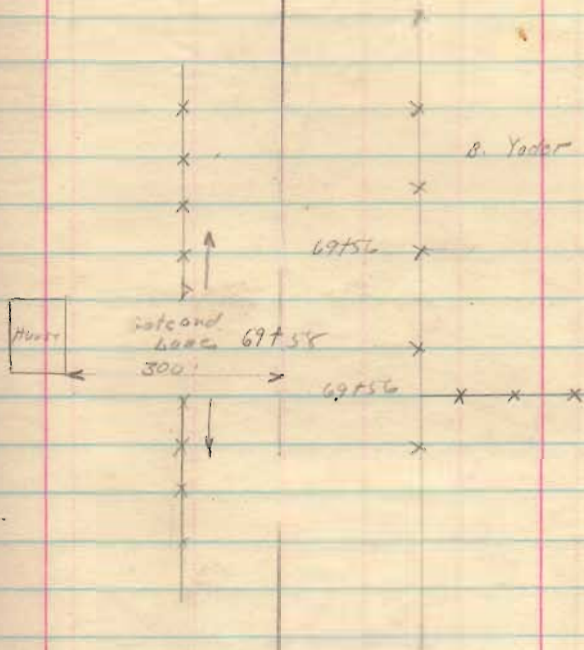
P.I. 67700

(1473)

INDEXED TO MAP

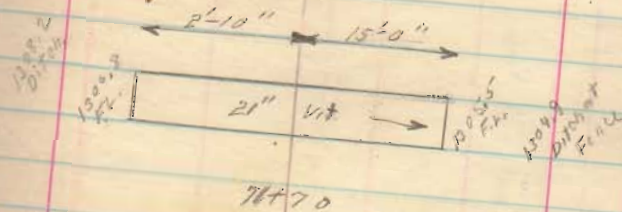


King Road



1473
INDEXED ON MAP

King Road



(1472)
INDEXED ON MAP

King Road



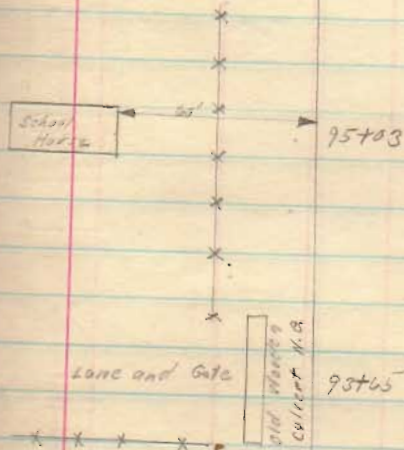
House

Yard: 50ft. 10ft. 50ft.

Garden

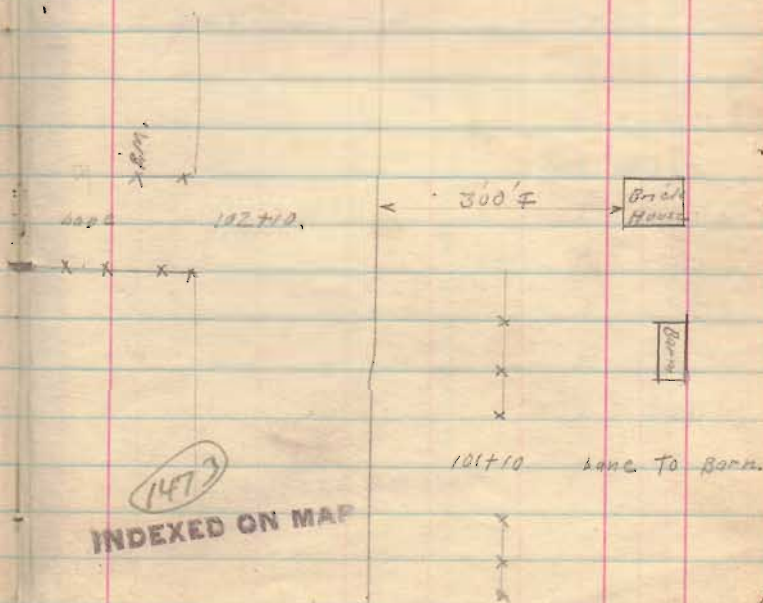
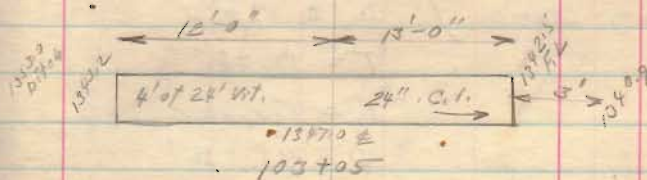
(1473)
INDEXED ON MAP

King Road



(1473)
INDEXED ON MAP

King Road



(1473)
INDEXED ON MAP

King Road.

Note:-

(114+00 To P.T. 9K,
114 To 115 = 139'
Long Station)

P.C. 111+95.14

P.I. 113+69.25

P.T. 114+65

 $\Delta = 89^{\circ}-20'$

T = 170+65

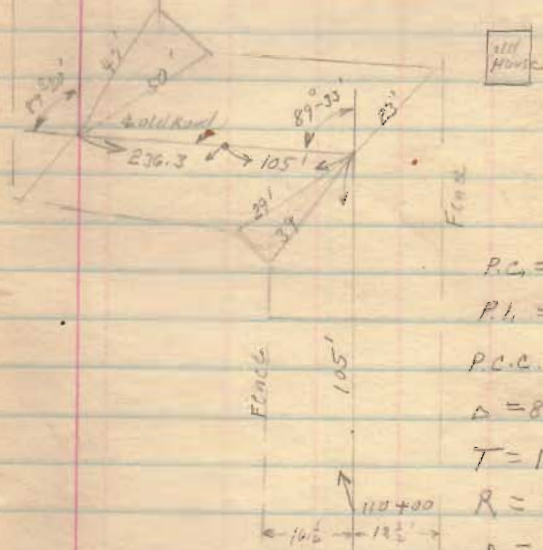
R = 172.65

 $D = 33^{\circ}-36'$

E = 70.10

L = 265.86

Calvert needed
at 113+00 ?

P.C. = 109+34²⁵

P.I. = 111+05

P.C.C. = 111+99¹⁴ $\Delta = 89-33$

T = 170.65

R = 172.04

 $D = 33^{\circ}-45'$

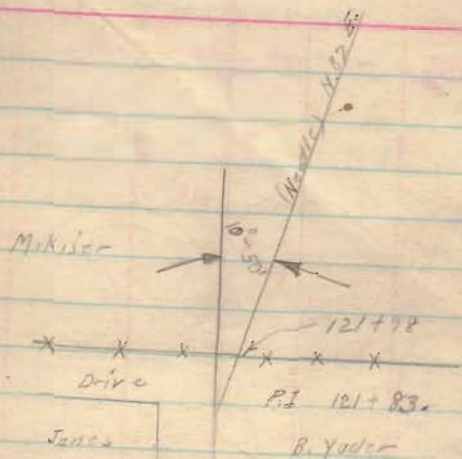
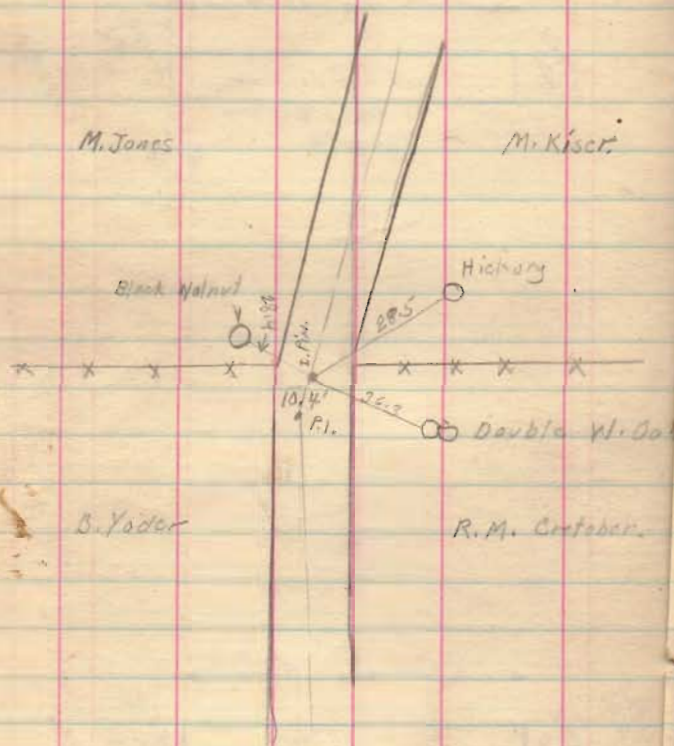
E = 70.28

L = 264.79

1473

INDEXED ON MAP

King Road



1473

INDEXED ON MAP

King Road Continued on page 27.