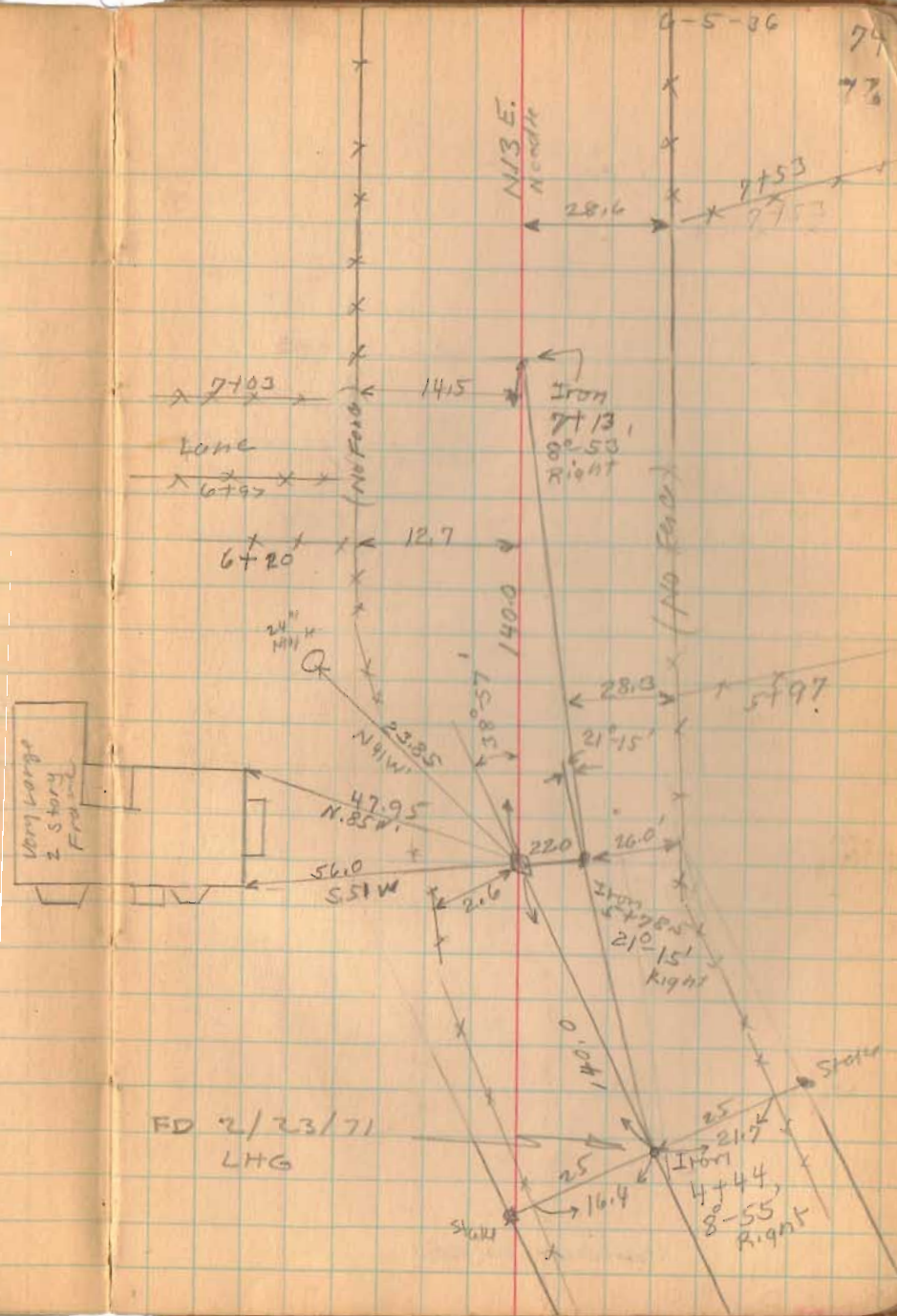




Road 47



1710

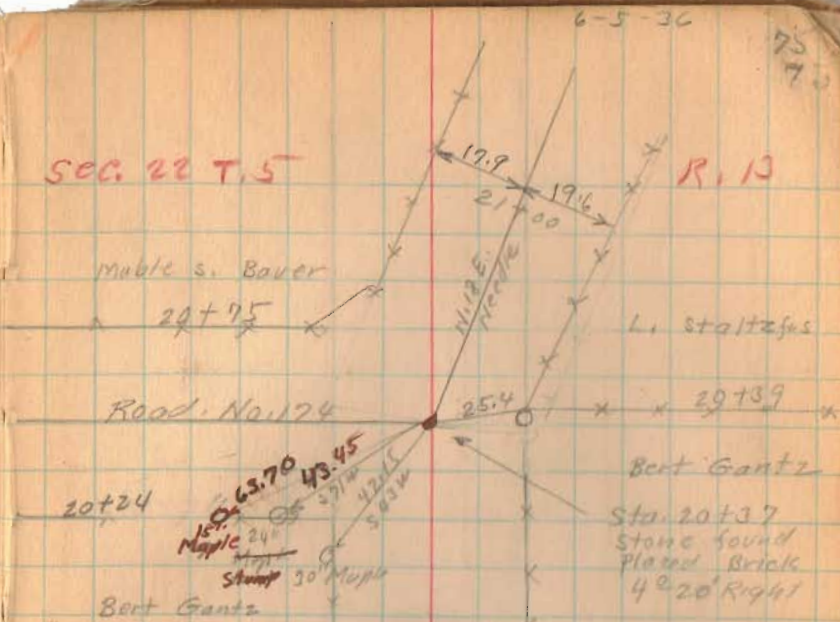
INDEXED ON MAP

Road 47

May-22-1948  
Station 20+37  
stone found.  
Placed Pipe over stoo  
Added Witnesses  
as shown in Red.  
Grover Wilgus.  
F.F. Wright

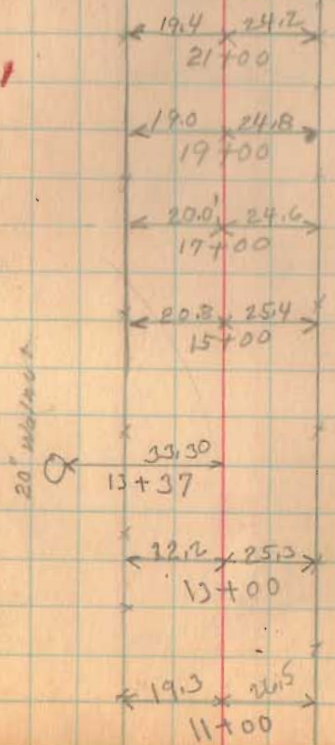
1716  
INDEXED ON MAP

SEC. 22 T.5



sec. 21

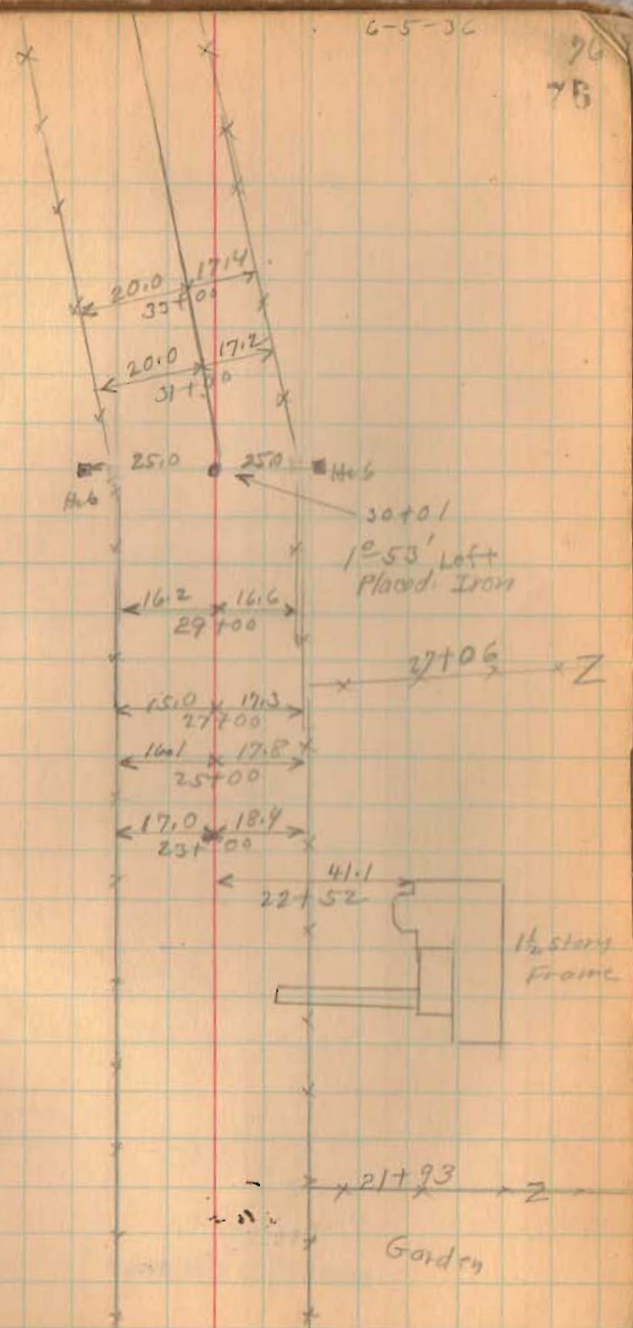
T.5 R.13



Road 47

6-5-36

76  
76



1716

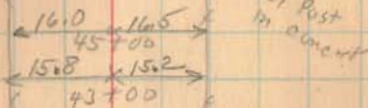
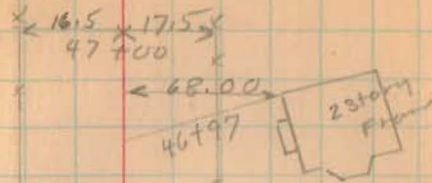
INDEXED ON MAP

June 6-1936

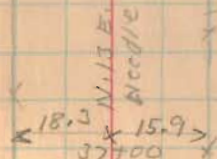
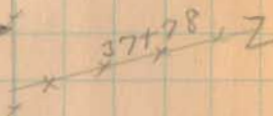
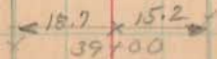
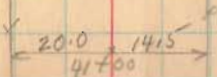
clear  
F. Wright  
E. Carr  
G. Wilgus.

77  
77

Road 47



Zx 41+25  
Lane



Stone found  
34+52



2°-18'

Green B. Leisure

15" elm

Mable S. Bauer et al.

L. 3+91+2 fcs

1716

INDEXED ON MAP

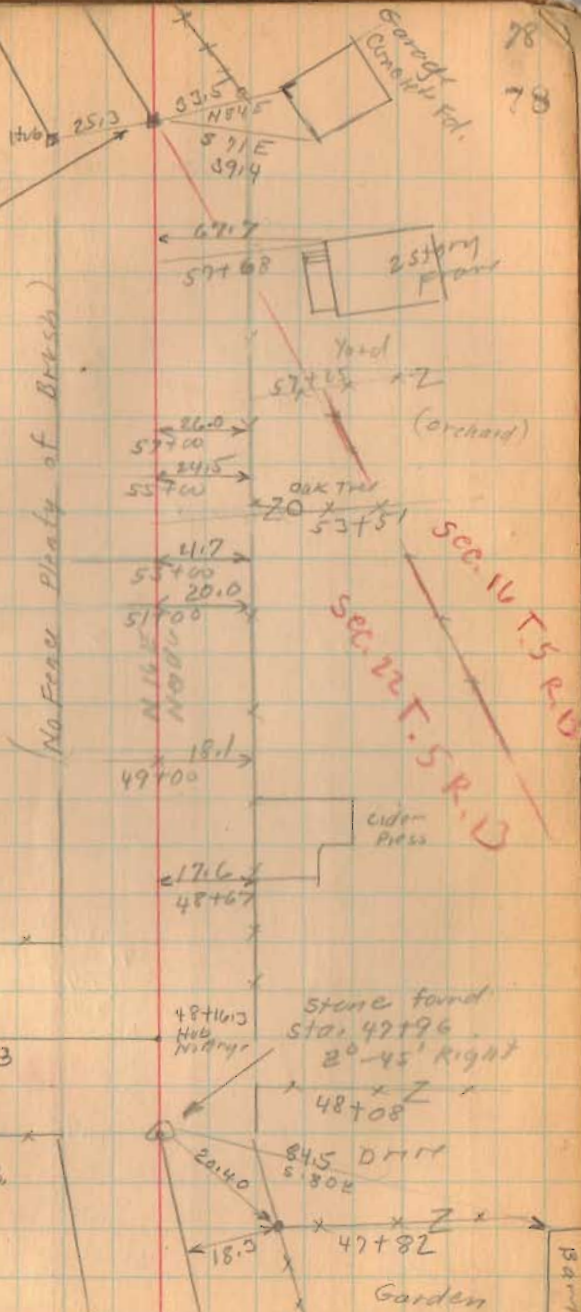
Road 47



1766  
INDEXED ON MAP

6-6-36

59+09  
Stone found  
17° 40' left.



78  
78

