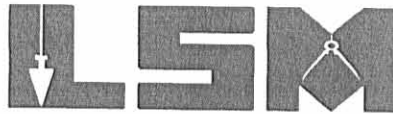


Lee Surveying and Mapping Co., Inc.

Land Surveys • Topography • Subdivisions • Construction Layout

117 N. Madriver St.
Bellefontaine OH 43311



Phone: (937) 593-7335
Fax: (937) 593-7444

BRAGG 1.556 ACRES

Lying in Virginia Military Survey 5864, Monroe Township, Logan County, Ohio.

Being out of the Roy L. Bragg 21.38 acre tract as deeded and described in Official Record 698, Page 113, Tract One of the Logan County Records of Deeds and being more particularly described as follows:

Beginning at a 5/8 inch iron rod found on the Ludlow Line and the west line of Virginia Military Survey 5864 at the intersection of center-lines of County Highway 1 (60 feet wide) and Township Road 199 (60 feet wide).

THENCE, with the Ludlow Line, the west line of Virginia Military Survey 5864 and the center-line of County Highway 1(Ludlow Road), S 21°-00'-00"E, a distance of 432.98 feet to a MAG nail set at the TRUE POINT OF BEGINNING.

THENCE, with the south line of the Carpenter Construction and Custom Contracting LTD., 2.000 acre tract (O.R. 707, Pg. 839), N 84°-51'-00"E, a distance of 352.29 feet to a 5/8 inch iron rod set, passing a 5/8 inch iron rod set at 31.19 feet.

THENCE, S 21°-00'-00"E, a distance of 200.00 feet to a 5/8 inch iron rod set.

THENCE, S 84°-51'-00"W, a distance of 352.29 feet to a MAG nail set, passing a 5/8 inch iron rod set at 321.10 feet.

THENCE, with the Ludlow Line, the west line of Virginia Military Survey 5864 and the center-line of County Highway 1, N 21°-00'-00"W, a distance of 200.00 feet to the point of beginning.

Containing 1.556 acres, of which 0.138 acre is within the highway right-of-way.

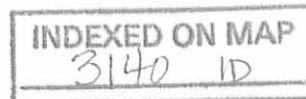
The basis for bearings is the Ludlow Line, being S 21°-00'-00"E, and all other bearings are from angles and distances measured in a field survey by Lee Surveying and Mapping Co., Inc. on February 26, 2004, Revised March 25, 2004.

Description prepared by:

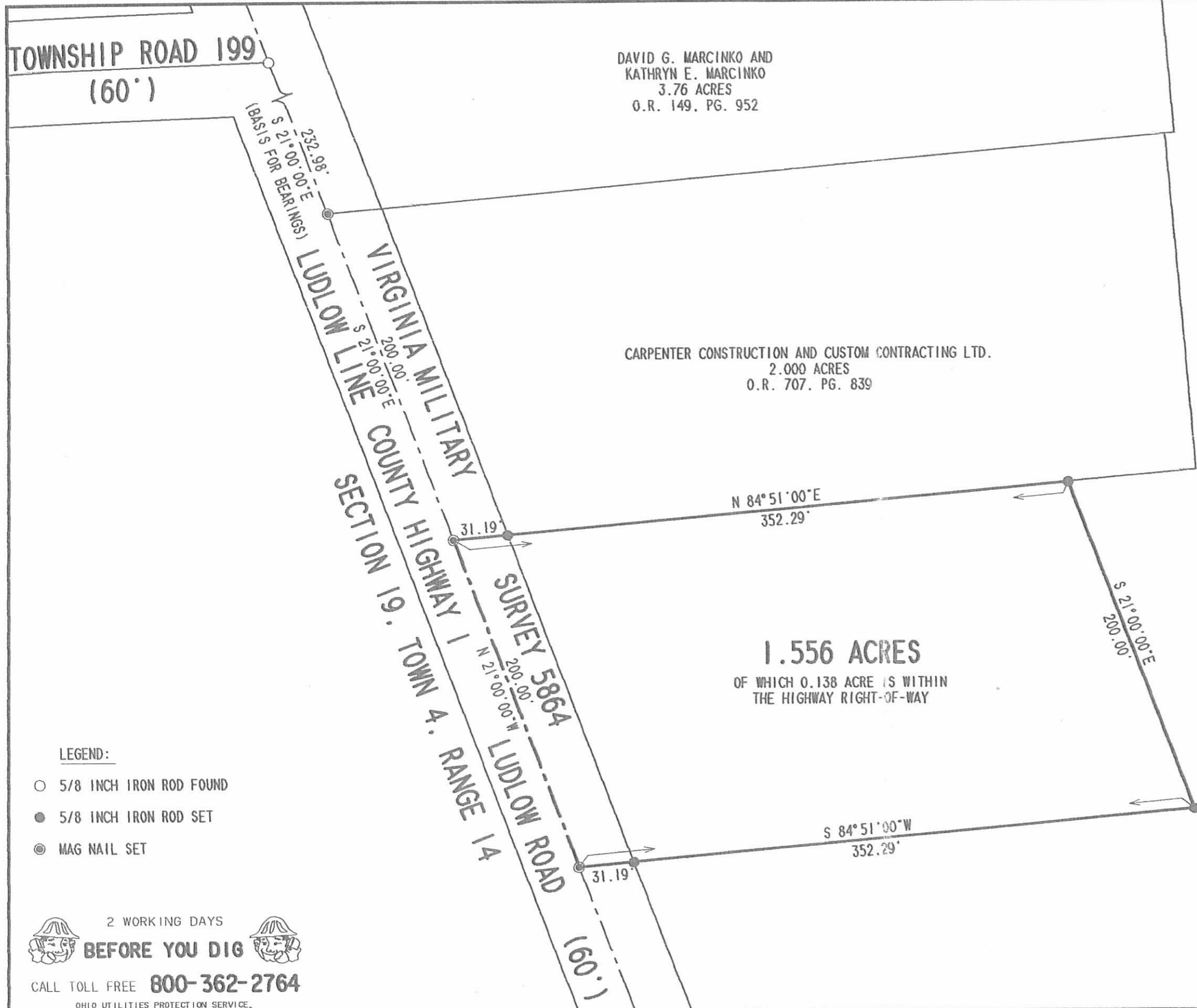


Jeffrey I. Lee
Professional Surveyor 6359
February 27, 2004
Revised March 25, 2004

L-3763



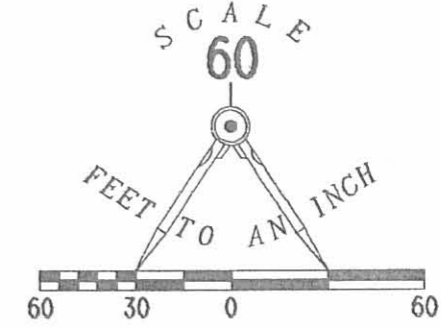
REC'D 3-29-04 DMJ OK



DAVID G. MARCINKO AND
 KATHRYN E. MARCINKO
 3.76 ACRES
 O.R. 149, PG. 952

CARPENTER CONSTRUCTION AND CUSTOM CONTRACTING LTD.
 2.000 ACRES
 O.R. 707, PG. 839

1.556 ACRES
 OF WHICH 0.138 ACRE IS WITHIN
 THE HIGHWAY RIGHT-OF-WAY



**SURVEY OF A 1.556 ACRE TRACT
 OUT OF THE
 ROY L. BRAGG
 21.38 ACRE TRACT
 OFFICIAL RECORD 698, PAGE 113
 TRACT ONE
 VIRGINIA MILITARY SURVEY 5864
 MONROE TOWNSHIP
 LOGAN COUNTY, OHIO**

ROY L. BRAGG
 21.38 ACRES
 O.R. 698, PG. 113
 TRACT ONE

SURVEYED BY:

Jeffrey I. Lee
 JEFFREY I. LEE
 PROFESSIONAL SURVEYOR 6359



FEBRUARY 26, 2004
 REVISED MARCH 25, 2004

COPYRIGHT 2004 BY:
LEE SURVEYING & MAPPING CO., INC.
 117 North Madriver Street
 BELLEFONTAINE, OHIO 43311

ORIGINAL STAMP IN GREEN

(937) 593-7335
 KSR D412 3763034 L-3763-3

LEGEND:

- 5/8 INCH IRON ROD FOUND
- 5/8 INCH IRON ROD SET
- ⊙ MAG NAIL SET

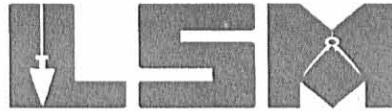
2 WORKING DAYS
BEFORE YOU DIG
 CALL TOLL FREE **800-362-2764**
 OHIO UTILITIES PROTECTION SERVICE.

INDEXED ON MAP
 3140 1P

REC'D 3-10-04 SUM OK
Lee Surveying and Mapping Co., Inc.

Land Surveys • Topography • Subdivisions • Construction Layout

117 N. Madriver St.
Bellefontaine OH 43311



Phone: (937) 593-7335
Fax: (937) 593-7444

**BRAGG
2.000 ACRES**

Lying in Virginia Military Survey 5864, Monroe Township, Logan County, Ohio.

Being out of the Roy L. Bragg 21.38 acre tract as deeded and described in Official Record 698, Page 113, Tract One of the Logan County Records of Deeds and being more particularly described as follows:

Beginning at a 5/8 inch iron rod found on the Ludlow Line and the west line of Virginia Military Survey 5864 at the intersection of center-lines of County Highway 1 (60 feet wide) and Township Road 199 (60 feet wide).

THENCE, with the Ludlow Line, the west line of Virginia Military Survey 5864 and the center-line of County Highway 1 (Ludlow Road), S 21°-00'-00"E, a distance of 232.98 feet to a MAG nail set at the TRUE POINT OF BEGINNING.

THENCE, with the south line of the David G. Marcinko and Kathryn E. Marcinko 3.76 acre tract (O.R. 149, Pg. 952), N 84°-51'-00"E, a distance of 480.13 feet to a 5/8 inch iron rod set, passing a 5/8 inch iron rod set at 31.19 feet.

THENCE, S 05°-09'-00"E, a distance of 192.40 feet to a 5/8 inch iron rod set.

THENCE, S 84°-51'-00"W, a distance of 425.50 feet to a MAG nail set, passing a 5/8 inch iron rod set at 394.31 feet.

THENCE, with the Ludlow Line, the west line of Virginia Military Survey 5864 and the center-line of County Highway 1, N 21°-00'-00"W, a distance of 200.00 feet to the point of beginning.

Containing 2.000 acres, of which 0.138 acre is within the highway right-of-way.

The basis for bearings is the Ludlow Line, being S 21°-00'-00"E, and all other bearings are from angles and distances measured in a field survey by Lee Surveying and Mapping Co., Inc. on February 26, 2004.



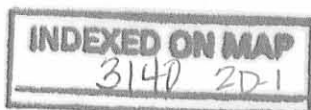
ORIGINAL STAMP IN GREEN

Description prepared by:

A handwritten signature in black ink, appearing to read 'J. Lee'.

Jeffrey I. Lee
Professional Surveyor 6359
February 27, 2004

L-3763

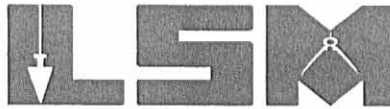


REC'D 3-10-04 SMM dk

Lee Surveying and Mapping Co., Inc.

Land Surveys • Topography • Subdivisions • Construction Layout

117 N. Madriver St.
Bellefontaine OH 43311



Phone: (937) 593-7335
Fax: (937) 593-7444

BRAGG 1.056 ACRES

Lying in Virginia Military Survey 5864, Monroe Township, Logan County, Ohio.

Being out of the Roy L. Bragg 21.38 acre tract as deeded and described in Official Record 698, Page 113, Tract One of the Logan County Records of Deeds and being more particularly described as follows:

Beginning at a 5/8 inch iron rod found on the Ludlow Line and the west line of Virginia Military Survey 5864 at the intersection of center-lines of County Highway 1 (60 feet wide) and Township Road 199 (60 feet wide).

THENCE, with the Ludlow Line, the west line of Virginia Military Survey 5864 and the center-line of County Highway 1(Ludlow Road), S 21°-00'-00"E, a distance of 432.98 feet to a MAG nail set at the TRUE POINT OF BEGINNING.

THENCE, N 84°-51'-00"E, a distance of 239.09 feet to a 5/8 inch iron rod set, passing a 5/8 inch iron rod set at 31.19 feet.

THENCE, S 21°-00'-00"E, a distance of 200.00 feet to a 5/8 inch iron rod set.

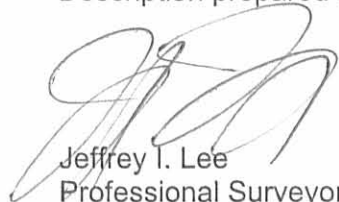
THENCE, S 84°-51'-00"W, a distance of 239.09 feet to a MAG nail set, passing a 5/8 inch iron rod set at 207.90 feet.

THENCE, with the Ludlow Line, the west line of Virginia Military Survey 5864 and the center-line of County Highway 1, N 21°-00'-00"W, a distance of 200.00 feet to the point of beginning.

Containing 1.056 acre, of which 0.138 acre is within the highway right-of-way.

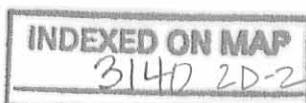
The basis for bearings is the Ludlow Line, being S 21°-00'-00"E, and all other bearings are from angles and distances measured in a field survey by Lee Surveying and Mapping Co., Inc. on February 26, 2004.

Description prepared by:


Jeffrey I. Lee
Professional Surveyor 6359
February 27, 2004

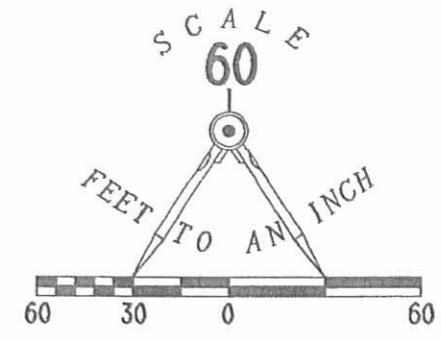
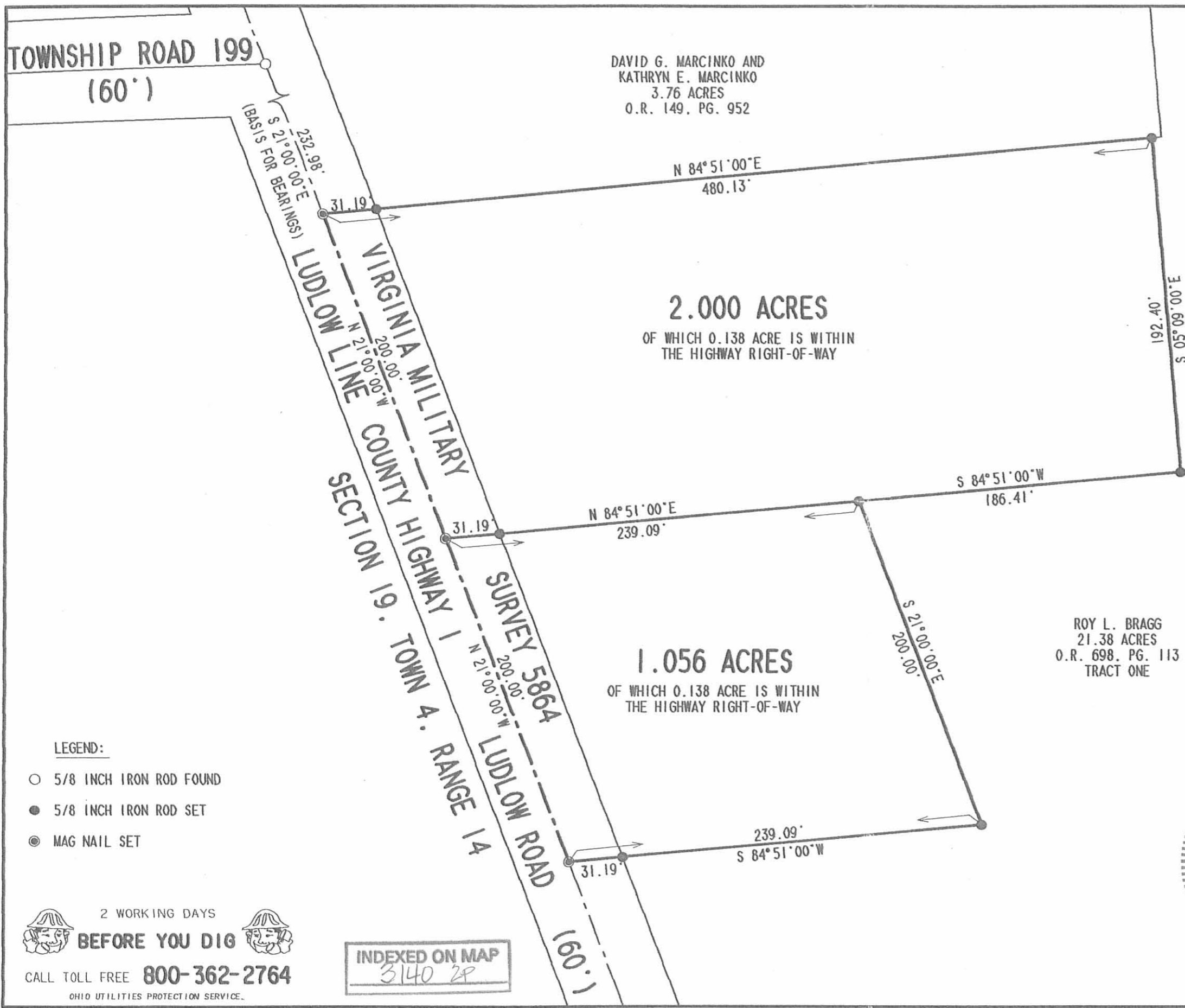


L-3763



ORIGINAL STAMP IN GREEN

Rec'd 3-10-04 sum ok



SURVEY OF A 2.000 ACRE TRACT
AND A 1.056 ACRE TRACT OUT OF THE
ROY L. BRAGG
21.38 ACRE TRACT
OFFICIAL RECORD 698, PAGE 113
TRACT ONE
VIRGINIA MILITARY SURVEY 5864
MONROE TOWNSHIP
LOGAN COUNTY, OHIO

- LEGEND:
- 5/8 INCH IRON ROD FOUND
 - 5/8 INCH IRON ROD SET
 - ◎ MAG NAIL SET

2 WORKING DAYS
BEFORE YOU DIG
CALL TOLL FREE **800-362-2764**
OHIO UTILITIES PROTECTION SERVICE.

INDEXED ON MAP
3140 2P



SURVEYED BY:
[Signature]
JEFFREY I. LEE
PROFESSIONAL SURVEYOR 6359
FEBRUARY 26, 2004

ORIGINAL STAMP IN GREEN

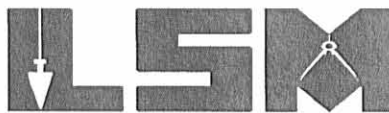
COPYRIGHT 2004 BY:
LEE SURVEYING & MAPPING CO., INC.
117 North Madriver Street
BELLEFONTAINE, OHIO 43311
(937) 593-7335
KSR/DAN D412 3763024 L-3763-3

REC'D 5-27-05 SWM OK

Lee Surveying and Mapping Co., Inc.

Land Surveys • Topography • Subdivisions • Construction Layout

117 N. Madriver St.
Bellefontaine OH 43311



Phone: (937) 593-7335
Fax: (937) 593-7444

1975-2005 - 30 YEARS OF EXCELLENCE

**BRAGG
1.556 ACRES**

Lying in Virginia Military Survey 5864, Monroe Township, Logan County, Ohio.

Being out of the Roy L. Bragg original 21.38 acre tract, original 5 acre tract and original 5 acre tract as deeded and described in Official Record 698, Page 113, Tract One, Tract Four and Tract Two of the Logan County Records of Deeds and being more particularly described as follows:

Beginning at a 5/8 inch iron rod found on the west line of Virginia Military Survey 5864 at the intersection of center-lines of Township Road 199 and County Highway 1 (Ludlow Road).

THENCE, with the center-line of County Highway 1 (60 feet wide), S 21°-00'-00"E, a distance of 632.98 feet to a MAG nail found at the TRUE POINT OF BEGINNING.

THENCE, with the south line of the David J. Croaro 1.556 acre tract (O.R. 772, Pg. 332), N 84°-51'-00"E, a distance of 352.29 feet to a 5/8 inch iron rod found, passing a 5/8 inch iron rod found at 31.19 feet.

THENCE, S 21°-00'-00"E, a distance of 200.00 feet to a 5/8 inch iron rod set.

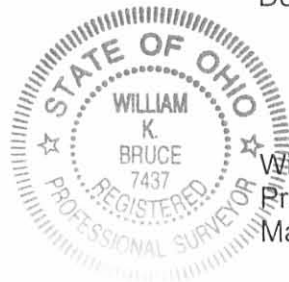
THENCE, S 84°-51'-00"W, a distance of 352.29 feet to a MAG nail set on the center-line of County Highway 1, passing a 5/8 inch iron rod set at 321.10 feet.

THENCE, with the center-line of County Highway 1, N 21°-00'-00"W, a distance of 200.00 feet to the point of beginning.

Containing 1.556 acres, of which 0.138 acre is within the highway right-of-way.

The basis for bearings is the west line of Virginia Military Survey 5864, being N 21°-00'-00"W, and all other bearings are from angles and distances measured in a field survey by Lee Surveying and Mapping Co., Inc. on May 25, 2005.

Description prepared by:

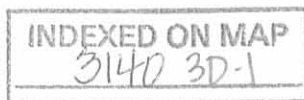


William K. Bruce

William K. Bruce
Professional Surveyor 7437
May 25, 2005

L-3763

ORIGINAL STAMP IN GREEN

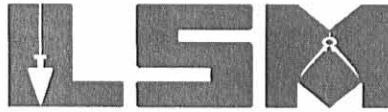


REC'D 5-27-05 8:44 AM OK

Lee Surveying and Mapping Co., Inc.

Land Surveys • Topography • Subdivisions • Construction Layout

117 N. Madriver St.
Bellefontaine OH 43311



Phone: (937) 593-7335
Fax: (937) 593-7444

1975-2005 - 30 YEARS OF EXCELLENCE

**BRAGG
1.502 ACRES**

Lying in Virginia Military Survey 5864, Monroe Township, Logan County, Ohio.

Being out of the Roy L. Bragg original 10 acre tract as deeded and described in Official Record 698, Page 113, Tract Five of the Logan County Records of Deeds and being more particularly described as follows:

Beginning at a 5/8 inch iron rod found on the west line of Virginia Military Survey 5864 at the intersection of center-lines of Township Road 199 and County Highway 1 (Ludlow Road).

THENCE, with the center-line of County Highway 1 (60 feet wide), S 21°-00'-00"E, a distance of 1274.09 feet to a MAG nail set at the TRUE POINT OF BEGINNING.

THENCE, N 86°-29'-46"E, a distance of 343.00 feet to a 5/8 inch iron rod set, passing a 5/8 inch iron rod set at 31.46 feet.

THENCE, S 21°-00'-00"E, a distance of 200.00 feet to a 5/8 inch iron rod set.

THENCE, with the north lines of the Keith A. Gildow 0.88 acre tract (O.R. 23, Pg. 509, Tract I) and the Charles H. Croutwater 1.64 acre tract (O.R. 629, Pg. 162), S 86°-29'-46"W, a distance of 343.00 feet to a 5/8 inch iron rod found on the center-line of County Highway 1, passing a 5/8 inch iron rod set at 311.54 feet.

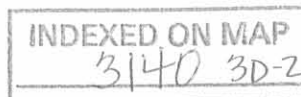
THENCE, with the center-line of County Highway 1, N 21°-00'-00"W, a distance of 200.00 feet to the point of beginning.

Containing 1.502 acres, of which 0.138 acre is within the highway right-of-way.

The basis for bearings is the west line of Virginia Military Survey 5864, being N 21°-00'-00"W, and all other bearings are from angles and distances measured in a field survey by Lee Surveying and Mapping Co., Inc. on May 25, 2005.

Description prepared by:

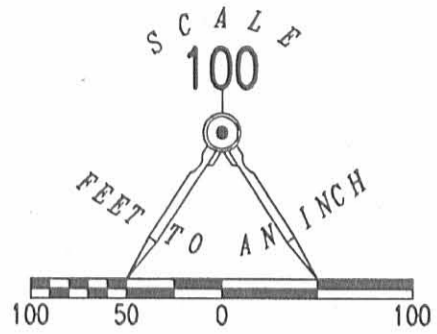
William K. Bruce
Professional Surveyor 7437
May 25, 2005



REC'D 5-27-05 SWYOK

LEGEND:

- 5/8 INCH IRON ROD FOUND
- MAG NAIL SET
- ⊗ MAG NAIL FOUND
- 5/8 INCH IRON ROD SET



TOWNSHIP
ROAD 199

SECTION 19, TOWN 4, RANGE 14

COUNTY HIGHWAY 1
LUDLOW ROAD (60')
VIRGINIA MILITARY SURVEY 5864
(BASIS FOR BEARINGS)

DAVID J. CROARO
1.556 ACRES
O.R. 772, PG. 332

ROY L. BRAGG
ORIGINAL 21.38 ACRES
O.R. 698, PG. 113
TRACT ONE

1.556 ACRES
OF WHICH 0.138 ACRE IS WITHIN
THE HIGHWAY RIGHT-OF-WAY

ROY L. BRAGG
ORIGINAL 5 ACRES
O.R. 698, PG. 113
TRACT FOUR

ROY L. BRAGG
ORIGINAL 5 ACRES
O.R. 698, PG. 113
TRACT TWO

ROY L. BRAGG
ORIGINAL 10 ACRES
O.R. 698, PG. 113
TRACT FIVE

1.502 ACRES
OF WHICH 0.138 ACRE IS WITHIN
THE HIGHWAY RIGHT-OF-WAY

CHARLES H. CROUTWATER
1.64 ACRES
O.R. 629, PG. 162

KEITH A. GILDOW
0.88 ACRE
O.R. 23, PG. 509
TRACT 1

SURVEY OF TWO TRACTS OUT OF THE
ROY L. BRAGG
ORIGINAL 21.38 ACRE TRACT,
5 ACRE TRACT, 5 ACRE TRACT
AND 10 ACRE TRACT
OFFICIAL RECORD 698, PAGE 113
TRACTS ONE, FOUR, TWO AND FIVE
VIRGINIA MILITARY SURVEY 5864
MONROE TOWNSHIP
LOGAN COUNTY, OHIO

INDEXED ON MAP
3140 3P



2 WORKING DAYS

BEFORE YOU DIG

CALL TOLL FREE 800-362-2764

OHIO UTILITIES PROTECTION SERVICE



ORIGINAL STAMP IN GREEN

SURVEYED BY:

WILLIAM K. BRUCE
PROFESSIONAL SURVEYOR 7437
MAY 25, 2005

COPYRIGHT 2005 BY:
LEE SURVEYING & MAPPING CO., INC.
117 North Madriver Street
BELLEFONTAINE, OHIO 43311
(937) 593-7335

KSR D0505 3763055 L-3763-3

Levan -- Lee Survey Monroe Township Jan. 1956 3.76 Acres

The following described land in Monroe Township, Logan County Ohio and being in V.M.S. 5864

Being 3.76 acres out of the ~~present~~ ~~1804~~ N.W. corner of the present 30.14 acre tract the 3.76 acres being more fully described as follows : Beginning in the center of County Road Number one known as the Ludlow Pike and the center of County Road Number 199 thence with the center of the said Ludlow Pike N. 21 - 00 W. 99.2 feet to an iron thence N. 86 - 28.E. 572.3 feet to an iron pipe the last described line being thirty feet south of and parellel with the south side of the Albert King 51.77 acre tract and also ~~the~~ being the south side of a thirty foot lane leading to E.L.Berry's 10.66 acre tract and also to the Vada Kauffman's 83.85 acre tract thence S. 5 - 09 E. 304.0 feet to an iron pipe thence S. 84 - 51 W. 480.7 feet to an iron in the center of the Ludlow Pike the last described line passing an iron pipe in the east side of said pike at 449.5 feet said pipe being thirty feet from the center line of the Ludlow Pike when measured at right angles, thence with the center of said Ludlow Pike N. 21 - 00 W. 233.3 feet to the place of beginning at the center of Road Number 199 said described tract containing 3.76 acres.

cc
Logan County Engineer.

on plat Book

3140 4D

INDEXED ON MAP