

Survey Rd 29

Stakes set at 60'  
See Bk 602 pg 31-34

PT 113+30.69 RR spike Hubs set

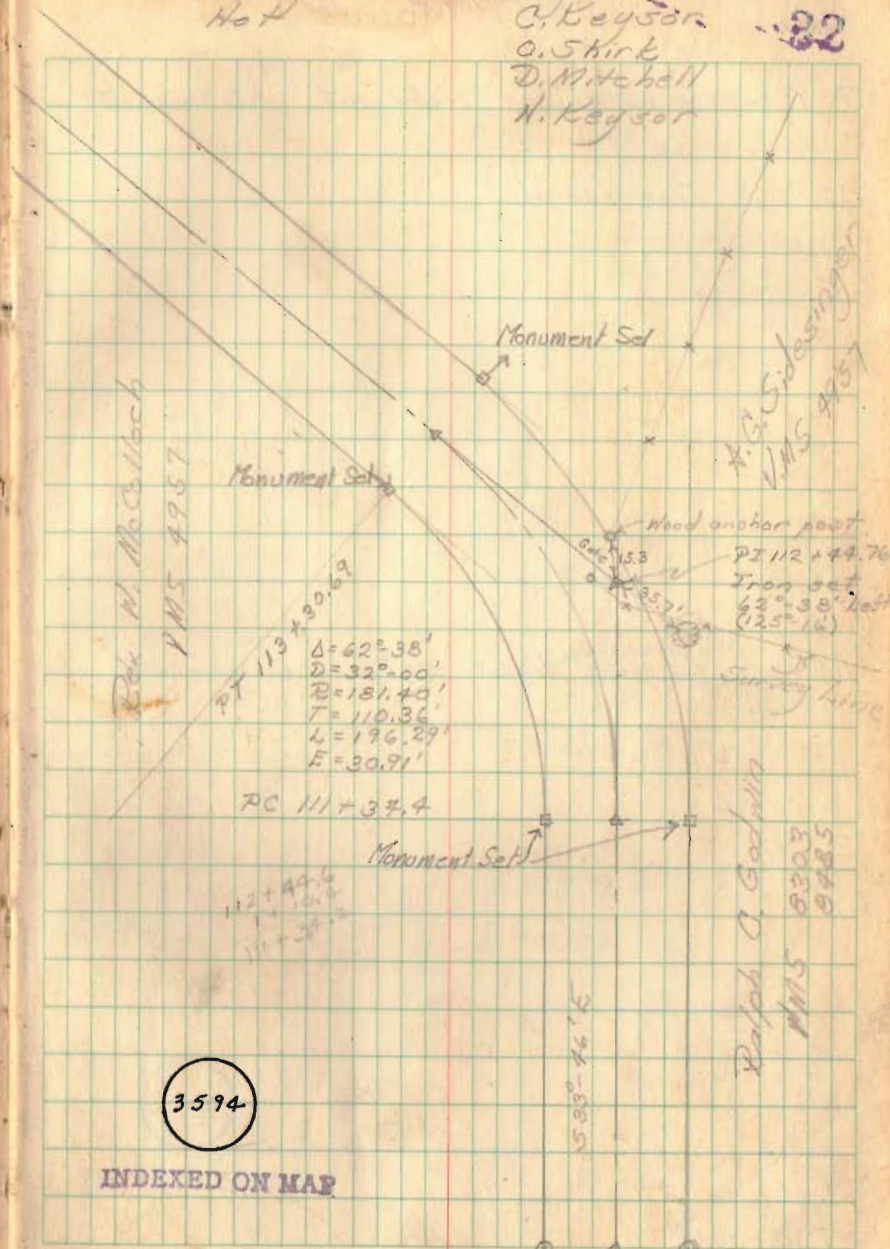
PC 111+34.4 RR spike Hubs set

108+00 RR spike R/W monuments found

3 July 47  
Hot

Party:-  
C. Keyson  
O. Skirk  
D. Mitchell  
H. Keyson

32



Rd 29 (contd)

PC 123+57.2 RR spike Hubs set

122+70.8 Iron Sound

118+00 RR spike Hubs set

PT 113+30.69

7 July 1947

33

Monument Set



Monument Set

RR spike set



Iron Sound

122+70.8 =

123+00 (old)

A.G. Sidasinger  
118+97 \* lane \*

Rex W. McCulloch  
Monument Set



Monument Set

A.G. Sidasinger

\* \* \* 117+95

Rex W. McCulloch

Rd 29-2.20

116+17.6



116+43

116+25

116+50

3594

INDEXED ON MAP



Rd 29 (contd)

126+65.2 Iron found

PT 126+61.1 P.B. spike Hubs set

I.P. Found

PC 123+57.2

Monument Set

34

Iron found  
126+65.2 =  
127+00 (old)

Monument Set

Monument Set 7/23/46

PT 126+61.1

18" hubery

Tele. pole

542.54' (1000±0)

16.84'

PT 125+23.23

Iron spike  
542.54' ± 0.1'

$A = 59^{\circ} 54'$   
 $D = 18^{\circ} 00'$   
 $R = 319.62'$   
 $T = 166.03'$   
 $L = 40.55'$   
 $L = 303.89'$

3594

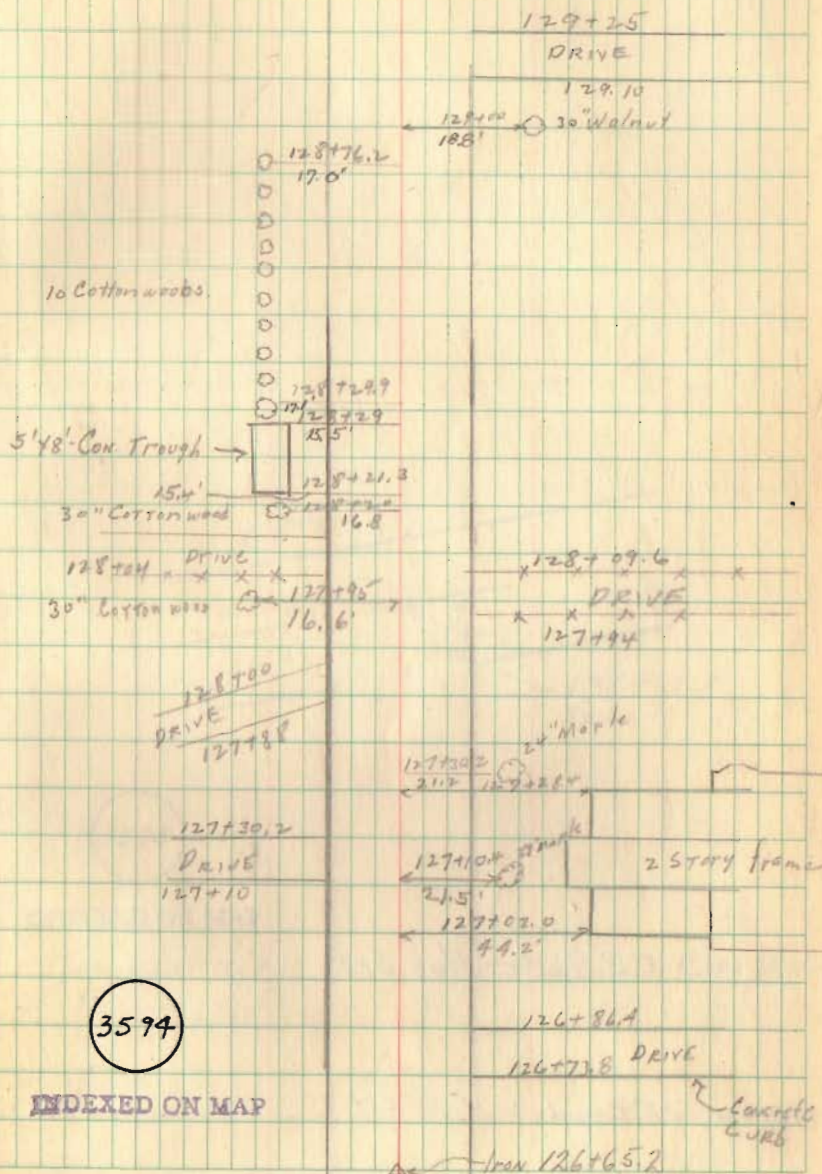
INDEXED ON MAP

Monument Set 7/23/46  
PC 123+57.2

Rd 29 (contd)

7/8/47  
E. Cor G.  
S WILKINS

35



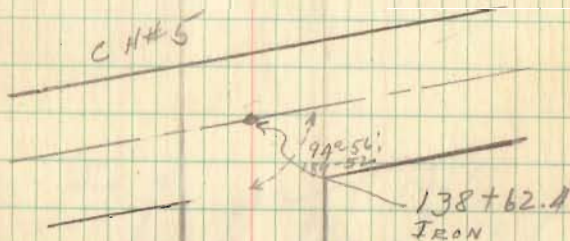
3594

INDEXED ON MAP



Rd 29 (contd)

7/8/97



3594

INDEXED ON MAP

Monument Set  $\rightarrow$   $\Delta$   $\rightarrow$  Monument Set 7/22/98  
 7/23/98

Monument Set  $\rightarrow$   $\Delta$   $\rightarrow$  Monument Set 7/22/98

136+00 R.R. Spike-Hub Set

130+00 R.R. Spike-Hub Set