

LELAND P. GAVER
(6-24-71)

Ropp to Gaver Survey Description

June, 1971

Being situated in Monroe Township, Logan County, Ohio; and being a part of V.M.S. #8303 - 8485.

Beginning at a point where the west line of said V.M.S. #8303 - 8485 intersects the north right of way line of Township Road #55.

Thence with the north right of way line of Township Road #55 S 81° - 42'E 319.8 feet to an iron.

Thence S 21° - 38'W 43.0 feet to an iron.

Thence S 81° - 00'E 155.0 feet to a corner post.

Thence S 41° - 37'E 1087.0 feet to an iron.


Thence S 7° - 21'W 166.0 feet to a corner post.

Thence N 80° - 38'W 1295.0 feet to a corner post in said west line of V.M.S. #8303 - 8485.

Ohio
N 8° - 00'E 885.6

Thence with the west line of V.M.S. #8303 - 8485 ^{Ohio} feet to the place of beginning.

Containing 19.00 acres more or less. Being surveyed from a 43.10 acre tract.



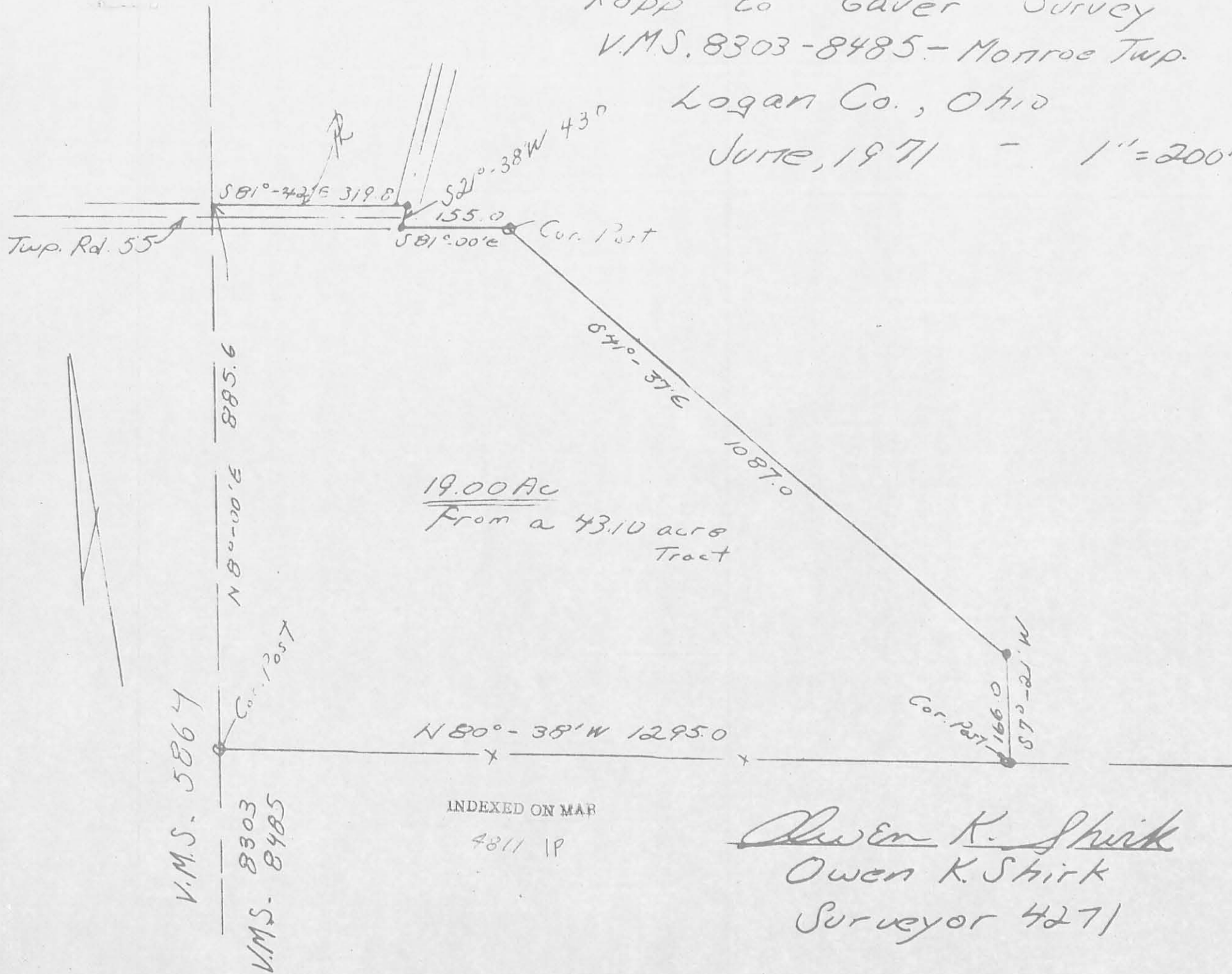
Owen K. Shirk
Surveyor 4271

INDEXED ON MAP
4811 1D

Ropp to Gaver Survey
V.M.S. 8303-8485 - Monroe Twp.

Logan Co., Ohio

June, 1971 - 1" = 200'



INDEXED ON MAP

4811 1P

Owen K. Shirk
Owen K. Shirk
Surveyor 4271