

SURVEY OF T.R. 47 FROM
CHAMPAIGN Co. LINE TO S.R. 245

3 + 26.10 1" ϕ BAR SET - THIS
POINT SET BY PROJECTING LINE
PARALLEL WITH FENCE FROM SOUTH
AND INTERSECTING CENTER OF
ROADWAY FROM NORTH.

NOTE: C/N = CAP of NAIL

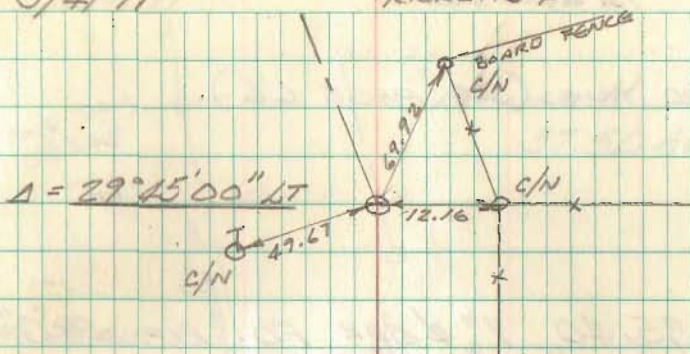
0+00 - 1" ϕ BAR - (FD 5/8" ϕ BAR;
DUG FOR STONE - NO LUCK -
REPLACED w/ 1" ϕ BAR)

10° WINDY

3/4/71

GEESLIN Δ
NICHOLS \times
RICKETTS ϕ

64

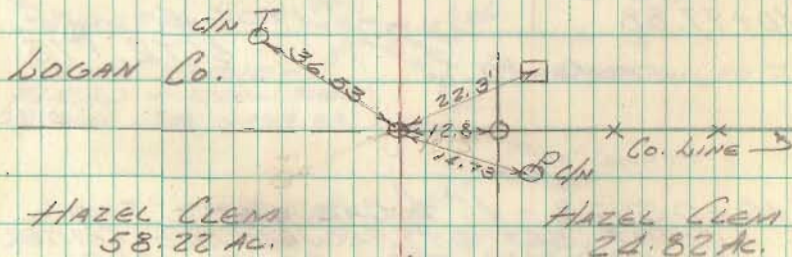


HAZEL G. CLEM
62.94 AC.

HAZEL G. CLEM
45.88 AC.

S. 21 T. 5 R. 13

S. 15 T. 5 R. 13



HAZEL CLEM
58.22 AC.

HAZEL CLEM
24.82 AC.

CHAMPAIGN Co.

800' ±

4908

TR 47 CONT.

TACKED HUB (SEE PAGE 66)

27+35.40 1" ϕ BAR FO, REF. Pt "C"
Pg 30 Book 390

20+00 R.R. SPIKE SET

15+00 R.R. SPIKE SET

10+99.88 1906.5
STONE FO & T.R. 175

10+03.23 - 1" ϕ BAR SET - THIS
POINT SET BY PROJECTING CENTER
OF ROADWAY FROM SOUTH AND
INTERSECTING LINE FROM HUB AT
SR 245 THROUGH STONE - REFERENCE
RD. RECORD 2 PG 159

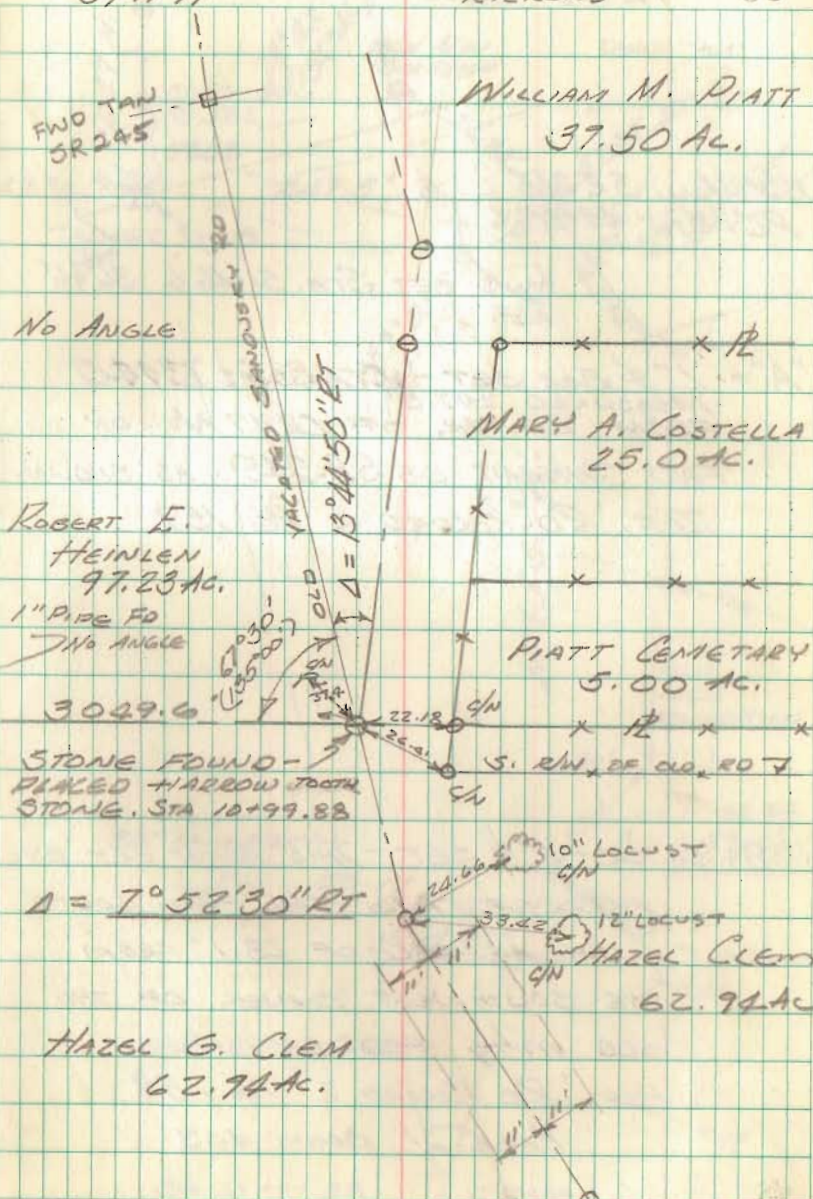
3+26.10

10° WINDY

GEESLIN
NICHOLS
RICKETTS

65

3/4/71



FWD TAW
SR 245

WILLIAM M. PIATT
37.50 AC.

NO ANGLE

MARY A. COSTELLA
25.0 AC.

ROBERT E.
HEINLEN
97.23 AC.

PIATT CEMETARY
5.00 AC.

1" PIPE FO
NO ANGLE

3029.6
STONE FOUND -
PLAKED HARROW TOOTH
STONE, STA 10+99.88

S. R/W. OF OLD RD

$\Delta = 7^{\circ} 52' 30'' RT$

10" LOCUST

12" LOCUST

HAZEL CLEM
62.94 AC.

HAZEL G. CLEM
62.94 AC.

TR 47 CONT

R/W Mon. SR 245
P.C. STA. 49+09.2

HUB SET STA. 51+46.6 36°46'
REF.

"A" = 1" ϕ BAR SET - STA. 35+73.40
MEASURED 247.5'
FROM CENTER OF CR 27 N. ON
FWD. TANGENT OF SR. 245. AS SHOWN.
REF. RD RECORD 2 PG 159

28+36.00 - 1" ϕ SET - THIS POINT SET BY
INTERSECTING TAN. FROM SOUTH
WITH AN ARC OF 23.1' FROM
THE SOUTHWEST CORNER OF THE
OLD MILL FOUNDATION,
REF. RD RECORD 2 PG 159
PAGE 21 BOOK 403



10° WINDY

GREGLIN
NICHOLS
RICKETTS

68

