



Rec'd 1-8-99 dxgca

Lee Surveying and Mapping Co., Inc.



Land Surveys • Topography • Subdivisions • Construction Layout

117 N. Madriver Street
Bellefontaine OH 43311

Phone: (937) 593-7335
Fax: (937) 593-7444

HENRY FARMS 5.000 ACRE TRACT TRACT A

Lying in the Virginia Military Survey 4570, Monroe Township, Logan County, Ohio.

Being out of the Henry Farms 25.0 acre tract as deeded and described in Volume 381, Page 13, Parcel II, Tract I of the Logan County Records of Deeds and being more particularly described as follows:

Beginning at a 1/2 inch iron rod found at the intersection of center-lines of Township Road 29 and Township Road 163 .

THENCE, with the center-line of Township Road 29 (60 feet wide), N 63°-17'-42" W, a distance of 246.50 feet to a MAG nail set at Point of Intersection Station 70+00 (Logan County Engineer's F.B. 560, Pp. 50-52).

THENCE, with the center-line of Township Road 29, N 61°-55'-39" W, a distance of 1224.36 feet to a MAG nail set at the TRUE POINT OF BEGINNING.

THENCE, S 27°-42'-37" W, a distance of 651.85 feet to a 5/8 inch iron rod set, passing a 5/8 inch iron rod set at 30.00 feet.

THENCE, with the west line extended and the west line of Wilma Dougherty 10.00 acre tract (O.R. 9, Pg. 944, Tract I), N 62°-36'-27" W, a distance of 321.50 feet to a 3/4 inch iron rod found.

THENCE, with the easterly line of the Wilma Dougherty 0.30 acre tract (O.R. 9, Pg. 944, Tract II), N 27°-42'-37" E, a distance of 653.71 feet to a 5/8 inch iron rod found on the centerline of Township Road 29, passing a 5/8 inch iron rod set at 623.71 feet.

THENCE, with the center-line of Township Road 29, S 62°-42'-03" E, a distance of 158.97 feet to a 5/8 inch iron rod found at Point of Intersection Station 84+00 .

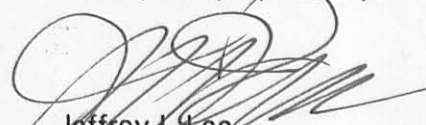
THENCE, with the center-line of Township Road 29, S 61°-55'-39" E, a distance of 174.44 feet to the point of beginning.

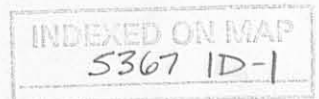
Containing 5.000 acres, of which 0.230 acre is within the highway right-of-way.

The basis for bearings is the center-line of Township Road 163 west of Station 83+34.5 being S 41°-14'-00" W, and all other bearings are from angles and distances measured in a field survey by Lee Surveying and Mapping Co., Inc. on December 15, 1998.



Description prepared by:


Jeffrey I. Lee
Professional Surveyor 6359
December 18, 1998
Revised January 7, 1999



L-2689



Reid 1-3-99 02904

Lee Surveying and Mapping Co., Inc.



Land Surveys • Topography • Subdivisions • Construction Layout

117 N. Madriver Street
Bellefontaine OH 43311

Phone: (937) 593-7335
Fax: (937) 593-7444

HENRY FARMS 6.251 ACRE TRACT TRACT B

Lying in the Virginia Military Survey 4570, Monroe Township, Logan County, Ohio.

Being out of the Henry Farms 25.0 acre tract as deeded and described in Volume 381, Page 13, Parcel II, Tract I of the Logan County Records of Deeds and being more particularly described as follows:

Beginning at a 1/2 inch iron rod found at the intersection of center-lines of Township Road 29 and Township Road 163.

THENCE, with the center-line of Township Road 29 (60 feet wide), N 63°-17'-42" W, a distance of 246.50 feet to a MAG nail set at Point of Intersection Station 70+00 (Logan County Engineer's F.B. 560, Pp. 50-52).

THENCE, with the center-line of Township Road 29, N 61°-55'-39" W, a distance of 727.28 feet to a MAG nail set at the TRUE POINT OF BEGINNING.

THENCE, S 41°-14'-00" W, a distance of 665.26 feet to a 5/8 inch iron rod set, passing a 5/8 inch iron rod set at 30.81 feet.

THENCE, N 62°-36'-27" W, a distance of 341.51 feet to a 5/8 inch iron rod set.

THENCE, N 27°-42'-37" E, a distance of 651.85 feet to a MAG nail set on the center-line of Township Road 29, passing a 5/8 inch iron rod set at 621.85 feet.

THENCE, with the center-line of Township Road 29, S 61°-55'-39" E, a distance of 497.08 feet to the point of beginning.

Containing 6.251 acres, of which 0.340 acre is within the highway right-of-way.

The basis for bearings is the center-line of Township Road 163 west of Station 83+34.5 being S 41°-14'-00" W, and all other bearings are from angles and distances measured in a field survey by Lee Surveying and Mapping Co., Inc. on December 15, 1998.

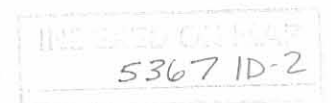
Description prepared by:

Jeffrey I. Lee
Professional Surveyor 6359
December 18, 1998
Revised January 7, 1999



ORIGINAL STAMP IN GREEN

L-2689





Road 1-8-99

Lee Surveying and Mapping Co., Inc.



Land Surveys • Topography • Subdivisions • Construction Layout

117 N. Madriver Street
Bellefontaine OH 43311

Phone: (937) 593-7335
Fax: (937) 593-7444

HENRY FARMS 15.160 ACRE TRACT TRACT C

Lying in the Virginia Military Survey 4570, Monroe Township, Logan County, Ohio.

Being out of the Henry Farms 25.0 acre tract and 49.5 acre tract as deeded and described in Volume 381, Page 13, Parcel II, Tract I and II of the Logan County Records of Deeds and being more particularly described as follows:

Beginning at a 1/2 inch iron rod found at the intersection of center-lines of Township Road 29 and Township Road 163.

THENCE, with the center-line of Township Road 29 (60 feet wide), N 63°-17'-42" W, a distance of 246.50 feet to a MAG nail set at Point of Intersection Station 70+00 (Logan County Engineer's F.B. 560, Pp. 50-52).

THENCE, with the center-line of Township Road 29, N 61°-55'-39" W, a distance of 460.27 feet to a MAG nail set at the TRUE POINT OF BEGINNING.

THENCE, S 41°-14'-00" W, a distance of 1724.15 feet to a 5/8 inch iron rod set, passing a 5/8 inch iron rod set at 30.81 feet.

THENCE, with the easterly line of the Ronald E. Hunsicker 5.21 acre tract (Vol. 384, Pg. 706), N 42°-01'-48" W, a distance of 400.48 feet to a 3/4 inch iron rod found.

THENCE, with the easterly line of the Wilma Dougherty 10.00 acre tract (O.R. 9, Pg. 944, Tract I), N 27°-53'-53" E, a distance of 890.59 feet to a 3/4 inch iron rod found.

THENCE, S 62°-36'-27" E, a distance of 353.39 feet to a 5/8 inch iron rod set.

THENCE, N 41°-14'-00" E, a distance of 665.26 feet to a MAG nail set on the center-line of Township Road 29, passing a 5/8 inch iron rod set at 634.45 feet.

THENCE, with the center-line of Township Road 29, S 61°-55'-39" E, a distance of 267.01 feet to the point of beginning.

Containing 15.160 acres, of which 0.184 acre is within the highway right-of-way.

The basis for bearings is the center-line of Township Road 163 west of Station 83+34.5 being S 41°-14'-00" W, and all other bearings are from angles and distances measured in a field survey by Lee Surveying and Mapping Co., Inc. on December 15, 1998.



Description prepared by:

Jeffrey I. Lee
Professional Surveyor 6359
December 18, 1998
Revised January 7, 1999

5367 ID-3

ORIGINAL STAMP IN GREEN

L-2689



Rec'd 1-9-99 02/90

Lee Surveying and Mapping Co., Inc.



Land Surveys • Topography • Subdivisions • Construction Layout

117 N. Madriver Street
Bellefontaine OH 43311

Phone: (937) 593-7335
Fax: (937) 593-7444

HENRY FARMS 5.002 ACRE TRACT TRACT D

Lying in the Virginia Military Survey 4570, Monroe Township, Logan County, Ohio.

Being out of the Henry Farms 25 acre tract and 49.5 acre tract as deeded and described in Volume 381, Page 13, Parcel I, Tract I and II of the Logan County Records of Deeds and being more particularly described as follows:

Beginning at a 1/2 inch iron rod found at the intersection of center-lines of Township Road 29 and Township Road 163.

THENCE, with the center-line of Township Road 163 (60 feet wide), S 37°-59'-33" W, a distance of 403.67 feet to a 1/2 inch iron rod found at Point of Intersection Station 83 + 34.5 (Logan County Engineer's F.B. 518, Pg. 48).

THENCE, with the center-line of Township Road 163, S 41°-14'-00" W, a distance of 34.93 feet to a MAG nail set.

THENCE, N 42°-01'-48" W, a distance of 714.55 feet to a 5/8 inch iron rod set, passing a 5/8 inch iron rod set at 30.21 feet.

THENCE, N 41°-14'-00" E, a distance of 187.50 feet to a MAG nail set on the centerline of Township Road 29 (60 feet wide), passing a 5/8 inch iron rod set at 156.69 feet.

THENCE, with the center-line of Township Road 29, S 61°-55'-39" E, a distance of 460.27 feet to a MAG nail set at Point of Intersection Station 70 + 00 (Logan County Engineer's F.B. 560, Pg. 50).

THENCE, with the center-line of Township Road 29, S 63°-17'-42" E, a distance of 246.50 feet to the point of beginning.

Containing 5.002 acres, of which 0.765 acre is within the highway right-of-way.

The basis for bearings is the center-line of Township Road 163 west of Station 83 + 34.5 being S 41°-14'-00" W, and all other bearings are from angles and distances measured in a field survey by Lee Surveying and Mapping Co., Inc. on December 15, 1998.

Description prepared by:

Jeffrey I. Lee
Professional Surveyor 6359
December 18, 1998
Revised January 7, 1999



ORIGINAL STAMP IN GREEN

L-2689

5367 1D-4



Lee Surveying and Mapping Co., Inc.



Land Surveys • Topography • Subdivisions • Construction Layout

117 N. Madriver Street
Bellefontaine OH 43311

Phone: (937) 593-7335
Fax: (937) 593-7444

HENRY FARMS 5.000 ACRE TRACT TRACT E

Lying in the Virginia Military Survey 4570, Monroe Township, Logan County, Ohio.

Being out of the Henry Farms 49.5 acre tract as deeded and described in Volume 381, Page 13, Parcel II, Tract II of the Logan County Records of Deeds and being more particularly described as follows:

Beginning at a 1/2 inch iron rod found at the intersection of center-lines of Township Road 29 and Township Road 163.

THENCE, with the center-line of Township Road 163 (60 feet wide), S 37°-59'-33" W, a distance of 403.67 feet to a 1/2 inch iron rod found at Point of Intersection Station 83 + 34.5 (Logan County Engineer's F.B. 518, Pg. 48).

THENCE, with the center-line of Township Road 163, S 41°-14'-00" W, a distance of 34.93 feet to a MAG nail set at the TRUE POINT OF BEGINNING.

THENCE, with the center-line of Township Road 163, S 41°-14'-00" W, a distance of 306.95 feet to a MAG nail set.

THENCE, N 42°-01'-48" W, a distance of 714.55 feet to a 5/8 inch iron rod set, passing a 5/8 inch iron rod set at 30.21 feet.

THENCE, N 41°-14'-00" E, a distance of 306.95 feet to a 5/8 inch iron rod set.

THENCE, S 42°-01'-48" E, a distance of 714.55 feet to the point of beginning, passing a 5/8 inch iron rod set at 684.34 feet .

Containing 5.000 acres, of which 0.211 acre is within the highway right-of-way.

The basis for bearings is the center-line of Township Road 163 west of Station 83 + 34.5 being S 41°-14'-00" W, and all other bearings are from angles and distances measured in a field survey by Lee Surveying and Mapping Co., Inc. on December 15, 1998.

Description prepared by:



ORIGINAL STAMP IN GREEN

Jeffrey I. Lee
Professional Surveyor 6359
December 18, 1998
Revised January 7, 1999

L-2689

5367 ID-5



Lee Surveying and Mapping Co., Inc.



Land Surveys • Topography • Subdivisions • Construction Layout

117 N. Madriver Street
Bellefontaine OH 43311

Phone: (937) 593-7335
Fax: (937) 593-7444

HENRY FARMS 5.000 ACRE TRACT TRACT F

Lying in the Virginia Military Survey 4570, Monroe Township, Logan County, Ohio.

Being out of the Henry Farms 49.5 acre tract as deeded and described in Volume 381, Page 13, Parcel II, Tract II of the Logan County Records of Deeds and being more particularly described as follows:

Beginning at a 1/2 inch iron rod found at the intersection of center-lines of Township Road 29 and Township Road 163.

THENCE, with the center-line of Township Road 163 (60 feet wide), S 37°-59'-33" W, a distance of 403.67 feet to a 1/2 inch iron rod found at Point of Intersection Station 83 + 34.5 (Logan County Engineer's F.B. 518, Pg. 48).

THENCE, with the center-line of Township Road 163, S 41°-14'-00" W, a distance of 341.88 feet to a MAG nail set at the TRUE POINT OF BEGINNING.

THENCE, with the center-line of Township Road 163, S 41°-14'-00" W, a distance of 306.95 feet to a MAG nail set.

THENCE, N 42°-01'-48" W, a distance of 714.55 feet to a 5/8 inch iron rod set, passing a 5/8 inch iron rod set at 30.21 feet.

THENCE, N 41°-14'-00" E, a distance of 306.95 feet to a 5/8 inch iron rod set.

THENCE, S 42°-01'-48" E, a distance of 714.55 feet to the point of beginning, passing a 5/8 inch iron rod set at 684.34 feet .

Containing 5.000 acres, of which 0.211 acre is within the highway right-of-way.

The basis for bearings is the center-line of Township Road 163 west of Station 83 + 34.5 being S 41°-14'-00" W, and all other bearings are from angles and distances measured in a field survey by Lee Surveying and Mapping Co., Inc. on December 15, 1998.

Description prepared by:



ORIGINAL STAMP IN GREEN

Jeffrey I. Lee
Jeffrey I. Lee
Professional Surveyor 6359
December 18, 1998
Revised January 7, 1999

L-2689

5367 ID-6



Rec'd 1-8-99 in 91

Lee Surveying and Mapping Co., Inc.



Land Surveys • Topography • Subdivisions • Construction Layout

117 N. Madriver Street
Bellefontaine OH 43311

Phone: (937) 593-7335
Fax: (937) 593-7444

HENRY FARMS 5.000 ACRE TRACT TRACT G

Lying in the Virginia Military Survey 4570, Monroe Township, Logan County, Ohio.

Being out of the Henry Farms 49.5 acre tract as deeded and described in Volume 381, Page 13, Parcel II, Tract II of the Logan County Records of Deeds and being more particularly described as follows:

Beginning at a 1/2 inch iron rod found at the intersection of center-lines of Township Road 29 and Township Road 163.

THENCE, with the center-line of Township Road 163 (60 feet wide), S 37°-59'-33" W, a distance of 403.67 feet to a 1/2 inch iron rod found at Point of Intersection Station 83 + 34.5 (Logan County Engineer's F.B. 518, Pg. 48).

THENCE, with the center-line of Township Road 163, S 41°-14'-00" W, a distance of 648.83 feet to a MAG nail set at the TRUE POINT OF BEGINNING.

THENCE, with the center-line of Township Road 163, S 41°-14'-00" W, a distance of 306.95 feet to a MAG nail set.

THENCE, N 42°-01'-48" W, a distance of 714.55 feet to a 5/8 inch iron rod set, passing a 5/8 inch iron rod set at 30.21 feet.

THENCE, N 41°-14'-00" E, a distance of 306.95 feet to a 5/8 inch iron rod set.

THENCE, S 42°-01'-48" E, a distance of 714.55 feet to the point of beginning, passing a 5/8 inch iron rod set at 684.34 feet .

Containing 5.000 acres, of which 0.211 acre is within the highway right-of-way.

The basis for bearings is the center-line of Township Road 163 west of Station 83 + 34.5 being S 41°-14'-00" W, and all other bearings are from angles and distances measured in a field survey by Lee Surveying and Mapping Co., Inc. on December 15, 1998.

Description prepared by:

Jeffrey I. Lee
Professional Surveyor 6359
December 18, 1998
Revised January 7, 1999



ORIGINAL STAMP IN GREEN

L-2689

5367 1D-7



Lee Surveying and Mapping Co., Inc.



Land Surveys • Topography • Subdivisions • Construction Layout

117 N. Madriver Street
Bellefontaine OH 43311

Phone: (937) 593-7335
Fax: (937) 593-7444

HENRY FARMS 5.002 ACRE TRACT TRACT H

Lying in the Virginia Military Survey 4570, Monroe Township, Logan County, Ohio.

Being out of the Henry Farms 49.5 acre tract as deeded and described in Volume 381, Page 13, Parcel II, Tract II of the Logan County Records of Deeds and being more particularly described as follows:

Beginning at a 1/2 inch iron rod found at the intersection of center-lines of Township Road 29 and Township Road 163.

THENCE, with the center-line of Township Road 163 (60 feet wide), S 37°-59'-33" W, a distance of 403.67 feet to a 1/2 inch iron rod found at Point of Intersection Station 83+34.5 (Logan County Engineer's F.B. 518, Pg. 48).

THENCE, with the center-line of Township Road 163, S 41°-14'-00" W, a distance of 955.78 feet to a MAG nail set at the TRUE POINT OF BEGINNING.

THENCE, with the center-line of Township Road 163, S 41°-14'-00" W, a distance of 140.53 feet to a 1/2 inch iron rod found at Point of Intersection Station 72+37.5 (Logan County Engineer's F.B. 518, Pg. 48).

THENCE, with the center-line of Township Road 163, S 41°-50'-32" W, a distance of 166.53 feet to a MAG nail set.

THENCE, N 42°-01'-48" W, a distance of 712.77 feet to a 5/8 inch iron rod set, passing a 5/8 inch iron rod set at 30.17 feet.

THENCE, N 41°-14'-00" E, a distance of 307.26 feet to a 5/8 inch iron rod set.

THENCE, S 42°-01'-48" E, a distance of 714.55 feet to the point of beginning, passing a 5/8 inch iron rod set at 684.34 feet .

Containing 5.002 acres, of which 0.212 acre is within the highway right-of-way.

The basis for bearings is the center-line of Township Road 163 west of Station 83+34.5 being S 41°-14'-00" W, and all other bearings are from angles and distances measured in a field survey by Lee Surveying and Mapping Co., Inc. on December 15, 1998.



ORIGINAL STAMP IN GREEN

Description prepared by:

Jeffrey I. Lee
Jeffrey I. Lee
Professional Surveyor 6359
December 18, 1998
Revised January 7, 1999

5367 1D-8

L-2689



12/15/98 JIL

Lee Surveying and Mapping Co., Inc.



Land Surveys • Topography • Subdivisions • Construction Layout

117 N. Madriver Street
Bellefontaine OH 43311

Phone: (937) 593-7335
Fax: (937) 593-7444

HENRY FARMS 5.002 ACRE TRACT TRACT J

Lying in the Virginia Military Survey 4570, Monroe Township, Logan County, Ohio.

Being out of the Henry Farms 49.5 acre tract as deeded and described in Volume 381, Page 13, Parcel II, Tract II of the Logan County Records of Deeds and being more particularly described as follows:

Beginning at a 1/2 inch iron rod found at the intersection of center-lines of Township Road 29 and Township Road 163.

THENCE, with the center-line of Township Road 163 (60 feet wide), S 37°-59'-33" W, a distance of 403.67 feet to a 1/2 inch iron rod found at Point of Intersection Station 83+34.5 (Logan County Engineer's F.B. 518, Pg. 48).

THENCE, with the center-line of Township Road 163, S 41°-14'-00" W, a distance of 1096.31 feet to a 1/2 inch iron rod found at Point of Intersection Station 72+37.5 (Logan County Engineer's F.B. 518, Pg. 48).

THENCE, with the center-line of Township Road 163, S 41°-50'-32" W, a distance of 166.53 feet to a MAG nail set at the TRUE POINT OF BEGINNING.

THENCE, with the center-line of Township Road 163, S 41°-50'-32" W, a distance of 308.17 feet to a railroad spike set.

THENCE, with easterly line of the Ronald E. Hunsicker 5.21 acre tract (Vol. 384, Pg. 706), N 42°-01'-48" W, a distance of 709.47 feet to a 5/8 inch iron rod set, passing a 5/8 inch iron rod set at 30.17 feet.

THENCE, N 41°-14'-00" E, a distance of 308.54 feet to a 5/8 inch iron rod set.

THENCE, S 42°-01'-48" E, a distance of 712.77 feet to the point of beginning, passing a 5/8 inch iron rod set at 682.60 feet .

Containing 5.002 acres, of which 0.212 acre is within the highway right-of-way.

The basis for bearings is the center-line of Township Road 163 west of Station 83+34.5 being S 41°-14'-00" W, and all other bearings are from angles and distances measured in a field survey by Lee Surveying and Mapping Co., Inc. on December 15, 1998.

Description prepared by:

Jeffrey I. Lee
Professional Surveyor 6359
December 18, 1998
Revised January 6, 1999
Revised January 7, 1999



5367 1D-9 L-2689



REC'D 12-31-98 SMY OK 901 ✓

Lee Surveying and Mapping Co., Inc.



Land Surveys • Topography • Subdivisions • Construction Layout

117 N. Madriver Street
Bellefontaine OH 43311

Phone: (937) 593-7335
Fax: (937) 593-7444

HENRY FARMS 5.002 ACRE TRACT TRACT K

Lying in the Virginia Military Survey 4570, Monroe Township, Logan County, Ohio.

Being out of the Henry Farms 39.55 acre tract as deeded and described in Volume 381, Page 13, Parcel III, of the Logan County Records of Deeds and being more particularly described as follows:

Beginning at a 1/2 inch iron rod found at the intersection of center-lines of Township Road 29 and Township Road 163.

THENCE, with the center-line of Township Road 29 (60 feet wide), S 63°-17'-42" E, a distance of 411.62 feet to a MAG nail set.

THENCE, S 27°-39'-05" W, a distance of 480.91 feet to a 5/8 inch iron rod set, passing a 5/8 inch iron rod set at 30.00 feet.

THENCE, N 62°-38'-54" W, a distance of 503.28 feet to a MAG nail set on the center-line of Township Road 163 (60 feet wide), passing a 5/8 inch iron rod set at 472.38 feet.

THENCE, with the center-line of Township Road 163, N 41°-14'-00" E, a distance of 81.92 feet to a 1/2 inch iron rod found at Point of Intersection Station 83 + 34.5 (Logan County Engineer's F.B. 518, Pg. 48).

THENCE, with the center-line of Township Road 163, N 37°-59'-33" E, a distance of 403.67 feet to the point of beginning.

Containing 5.002 acres, of which 0.599 acre is within the highway right-of-way.

The basis for bearings is the center-line of Township Road 163 west of Station 83 + 34.5 being S 41°-14'-00" W, and all other bearings are from angles and distances measured in a field survey by Lee Surveying and Mapping Co., Inc. on December 15, 1998.

Description prepared by:

Jeffrey I. Lee
Professional Surveyor 6359
December 18, 1998



L-2689

5367 1D-10



REC 110 12-31-98 S.M. ALGON ✓

Lee Surveying and Mapping Co., Inc.



Land Surveys • Topography • Subdivisions • Construction Layout

117 N. Madriver Street
Bellefontaine OH 43311

Phone: (937) 593-7335
Fax: (937) 593-7444

HENRY FARMS 5.001 ACRE TRACT TRACT L

Lying in the Virginia Military Survey 4570, Monroe Township, Logan County, Ohio.

Being out of the Henry Farms 39.55 acre tract as deeded and described in Volume 381, Page 13, Parcel III, of the Logan County Records of Deeds and being more particularly described as follows:

Beginning at a 1/2 inch iron rod found at the intersection of center-lines of Township Road 29 and Township Road 163.

THENCE, with the center-line of Township Road 163 (60 feet wide), S 37°-59'-33" W, a distance of 403.67 feet to a 1/2 inch iron rod found at Point of Intersection Station 83 + 34.5 (Logan County Engineer's F.B. 518, Pg. 48).

THENCE, with the center-line of Township Road 163, S 41°-14'-00" W, a distance of 81.92 feet to a MAG nail set at the TRUE POINT OF BEGINNING.

THENCE, S 62°-38'-54" E, a distance of 663.60 feet to a 5/8 inch iron rod set, passing a 5/8 inch iron rod set at 30.90 feet.

THENCE, S 41°-14'-00" W, a distance of 338.13 feet to a 5/8 inch iron rod set.


THENCE, N 62°-38'-54" W, a distance of 663.60 feet to a MAG nail set on the center-line of Township Road 163, passing a 5/8 inch iron rod set at 632.70 feet.

THENCE, with the center-line of Township Road 163, N 41°-14'-00" E, a distance of 338.13 feet to the point of beginning.

Containing 5.001 acres, of which 0.233 acre is within the highway right-of-way.

The basis for bearings is the center-line of Township Road 163 west of Station 83 + 34.5 being S 41°-14'-00" W, and all other bearings are from angles and distances measured in a field survey by Lee Surveying and Mapping Co., Inc. on December 15, 1998.

Description prepared by:


Jeffrey J. Lee
Professional Surveyor 6359
December 18, 1998



L-2689
ORIGINAL STAMP IN GREEN

5367 ID-11



REC'D 12-31-98 SMY OKL gch ✓

SEE SURVEYOR'S AFFIDAVIT

Lee Surveying and Mapping Co., Inc.



Land Surveys • Topography • Subdivisions • Construction Layout

117 N. Madriver Street
Bellefontaine OH 43311

Phone: (937) 593-7335
Fax: (937) 593-7444

HENRY FARMS 5.001 ACRE TRACT TRACT M

Lying in the Virginia Military Survey 4570, Monroe Township, Logan County, Ohio.

Being out of the Henry Farms 39.55 acre tract as deeded and described in Volume 381, Page 13, Parcel III, of the Logan County Records of Deeds and being more particularly described as follows:

Beginning at a 1/2 inch iron rod found at the intersection of center-lines of Township Road 29 and Township Road 163.

THENCE, with the center-line of Township Road 163 (60 feet wide), S 37°-59'-33" W, a distance of 403.67 feet to a 1/2 inch iron rod found at Point of Intersection Station 83 + 34.5 (Logan County Engineer's F.B. 518, Pg. 48).

THENCE, with the center-line of Township Road 163, S 41°-14'-00" W, a distance of 420.05 feet to a MAG nail set at the TRUE POINT OF BEGINNING.

THENCE, S 62°-38'-54" W, a distance of 663.60 feet to a 5/8 inch iron rod set, passing a 5/8 inch iron rod set at 30.90 feet.

THENCE, S 41°-14'-00" W, a distance of 338.13 feet to a 5/8 inch iron rod set.


THENCE, N 62°-38'-54" W, a distance of 663.60 feet to a MAG nail set on the center-line of Township Road 163 passing a 5/8 inch iron rod set at 632.70 feet.

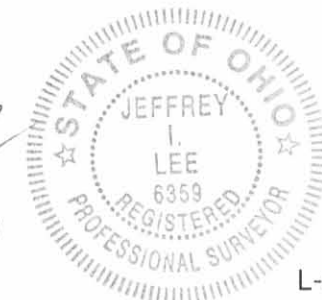
THENCE, with the center-line of Township Road 163, N 41°-14'-00" E, a distance of 338.13 feet to the point of beginning.

Containing 5.001 acres, of which 0.233 acre is within the highway right-of-way.

The basis for bearings is the center-line of Township Road 163 west of Station 83 + 34.5 being S 41°-14'-00" W, and all other bearings are from angles and distances measured in a field survey by Lee Surveying and Mapping Co., Inc. on December 15, 1998.

Description prepared by:


Jeffrey I. Lee
Professional Surveyor 6359
December 18, 1998



L-2689

ORIGINAL STAMP IN GREEN

5367 ID-12

Rec'd 1-6-99 OKGCH

SEE SURVEYOR'S AFFIDAVIT



Lee Surveying and Mapping Co., Inc.



Land Surveys • Topography • Subdivisions • Construction Layout

117 N. Madriver Street
Bellefontaine OH 43311

Phone: (937) 593-7335
Fax: (937) 593-7444

HENRY FARMS 5.001 ACRE TRACT TRACT N

Lying in the Virginia Military Survey 4570, Monroe Township, Logan County, Ohio.

Being out of the Henry Farms 39.55 acre tract as deeded and described in Volume 381, Page 13, Parcel III, of the Logan County Records of Deeds and being more particularly described as follows:

Beginning at a 1/2 inch iron rod found at the intersection of center-lines of Township Road 29 and Township Road 163.

THENCE, with the center-line of Township Road 163 (60 feet wide), S 37°-59'-33" W, a distance of 403.67 feet to a 1/2 inch iron rod found at Point of Intersection Station 83 + 34.5 (Logan County Engineer's F.B. 518, Pg. 48).

THENCE, with the center-line of Township Road 163, S 41°-14'-00" W, a distance of 758.18 feet to a MAG nail set at the TRUE POINT OF BEGINNING.

THENCE, S 62°-38'-54" W, a distance of 663.60 feet to a 5/8 inch iron rod set, passing a 5/8 inch iron rod set at 30.90 feet.

THENCE, S 41°-14'-00" W, a distance of 338.13 feet to a 5/8 inch iron rod set.

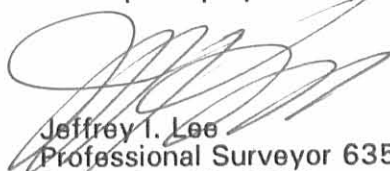
THENCE, with the easterly line of the Donald M. Stewart original 16.61 acre tract (Vol. 399, Pg. 656), N 62°-38'-54" W, a distance of 663.60 feet to a MAG nail set on the center-line of Township Road 163 passing a 5/8 inch iron rod set at 632.70 feet.

THENCE, with the center-line of Township Road 163, N 41°-14'-00" E, a distance of 338.13 feet to the point of beginning.

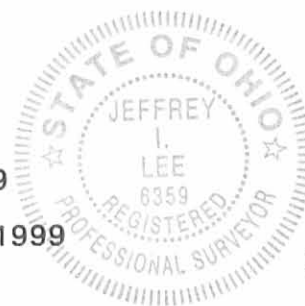
Containing 5.001 acres, of which 0.233 acre is within the highway right-of-way.

The basis for bearings is the center-line of Township Road 163 west of Station 83 + 34.5 being S 41°-14'-00" W, and all other bearings are from angles and distances measured in a field survey by Lee Surveying and Mapping Co., Inc. on December 15, 1998.

Description prepared by:


Jeffrey I. Lee
Professional Surveyor 6359
December 18, 1998

Revision Date: January 6, 1999



L-2689

ORIGINAL STAMP IN GREEN

5367 1D-13



REC'D 12-31-98 SMJ ak-jch ✓

Lee Surveying and Mapping Co., Inc.



Land Surveys • Topography • Subdivisions • Construction Layout

117 N. Madriver Street
Bellefontaine OH 43311

Phone: (937) 593-7335
Fax: (937) 593-7444

HENRY FARMS 5.003 ACRE TRACT TRACT P

Lying in the Virginia Military Survey 4570, Monroe Township, Logan County, Ohio.

Being out of the Henry Farms 39.55 acre tract as deeded and described in Volume 381, Page 13, Parcel III, of the Logan County Records of Deeds and being more particularly described as follows:

Beginning at a 1/2 inch iron rod found at the intersection of center-lines of Township Road 29 and Township Road 163.

THENCE, with the center-line of Township Road 29 (60 feet wide), S 63°-17'-42" E, a distance of 411.62 feet to a MAG nail set at the POINT OF BEGINNING.

THENCE, with the center-line of Township Road 29, S 63°-17'-42" E, a distance of 450.81 feet to a MAG nail set.

THENCE, S 27°-39'-05" W, a distance of 486.00 feet to a 5/8 inch iron rod set, passing a 5/8 inch iron rod set at 30.00 feet.

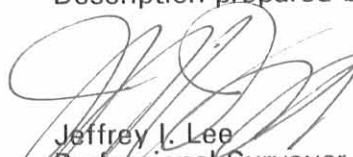
THENCE, N 62°-38'-54" W, a distance of 450.75 feet to a 5/8 inch iron rod set.

THENCE, N 27°-39'-05" E, a distance of 480.91 feet to the point of beginning, passing a 5/8 inch iron rod set at 450.91 feet.

Containing 5.003 acres, of which 0.311 acre is within the highway right-of-way.

The basis for bearings is the center-line of Township Road 163 west of Station 83 + 34.5 (Logan County Engineer's F.B. 518, Pg. 48) being S 41°-14'-00" W, and all other bearings are from angles and distances measured in a field survey by Lee Surveying and Mapping Co., Inc. on December 15, 1998.

Description prepared by:


Jeffrey I. Lee
Professional Surveyor 6359
December 18, 1998



ORIGINAL STAMP IN GREEN L-2689

5367 ID-14

Reed 1-6-99 OK gch



Lee Surveying and Mapping Co., Inc.



Land Surveys • Topography • Subdivisions • Construction Layout

117 N. Madriver Street
Bellefontaine OH 43311

Phone: (937) 593-7335
Fax: (937) 593-7444

HENRY FARMS 14.326 ACRE TRACT TRACT Q

Lying in the Virginia Military Survey 4570, Monroe Township, Logan County, Ohio.

Being out of the Henry Farms 39.55 acre tract as deeded and described in Volume 381, Page 13, Parcel III, of the Logan County Records of Deeds and being more particularly described as follows:

Beginning at a 1/2 inch iron rod found at the intersection of center-lines of Township Road 29 and Township Road 163.

THENCE, with the center-line of Township Road 29 (60 feet wide), S 63°-17'-42" E, a distance of 862.43 feet to a MAG nail set at the TRUE POINT OF BEGINNING.

THENCE, with the center-line of Township Road 29 (60 feet wide), S 63°-17'-42" E, a distance of 150.02 feet to a MAG nail set.

THENCE, with westerly line of the James Norviel original 21.73 acre tract (O.R. 205, Pg. 618), S 27°-39'-05" W, a distance of 1472.47 feet to a 5/8 inch iron rod found, passing a 5/8 inch iron rod set at 30.00 feet.

THENCE, with the northerly lines of the said 21.73 acre tract and the Donald M. Stewart original 16.61 acre tract (Vol. 399, Pg. 656) N. 62°-38'-54" W, a distance of 678.64 feet to a 5/8 inch iron rod set.

THENCE, N 41°-14'-00" E, a distance of 1014.39 feet to a 5/8 inch iron rod set.

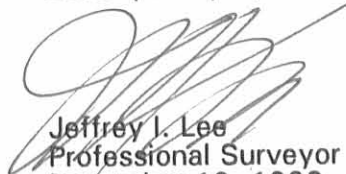
THENCE, S 62°-38'-54" E, a distance of 290.43 feet to a 5/8 inch iron rod set.

THENCE, N 27°-39'-05" E, a distance of 486.00 feet to the point of beginning, passing a 5/8 inch iron rod set at 456.00 feet.

Containing 14.326 acres, of which 0.107 acre is within the highway right-of-way.

The basis for bearings is the center-line of Township Road 163 west of Station 83+34.5 being S 41°-14'-00" W, and all other bearings are from angles and distances measured in a field survey by Lee Surveying and Mapping Co., Inc. on December 15, 1998.

Description prepared by:

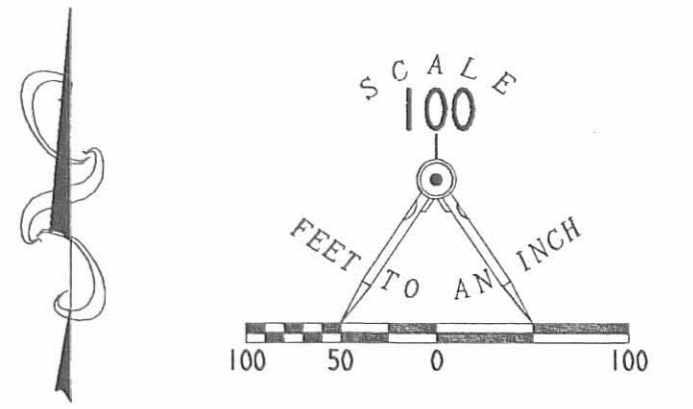

Jeffrey I. Lee
Professional Surveyor 6359
December 18, 1998
Revision Date: January 6, 1999



ORIGINAL STAMP IN GREEN

L-2689

5367 1D-15

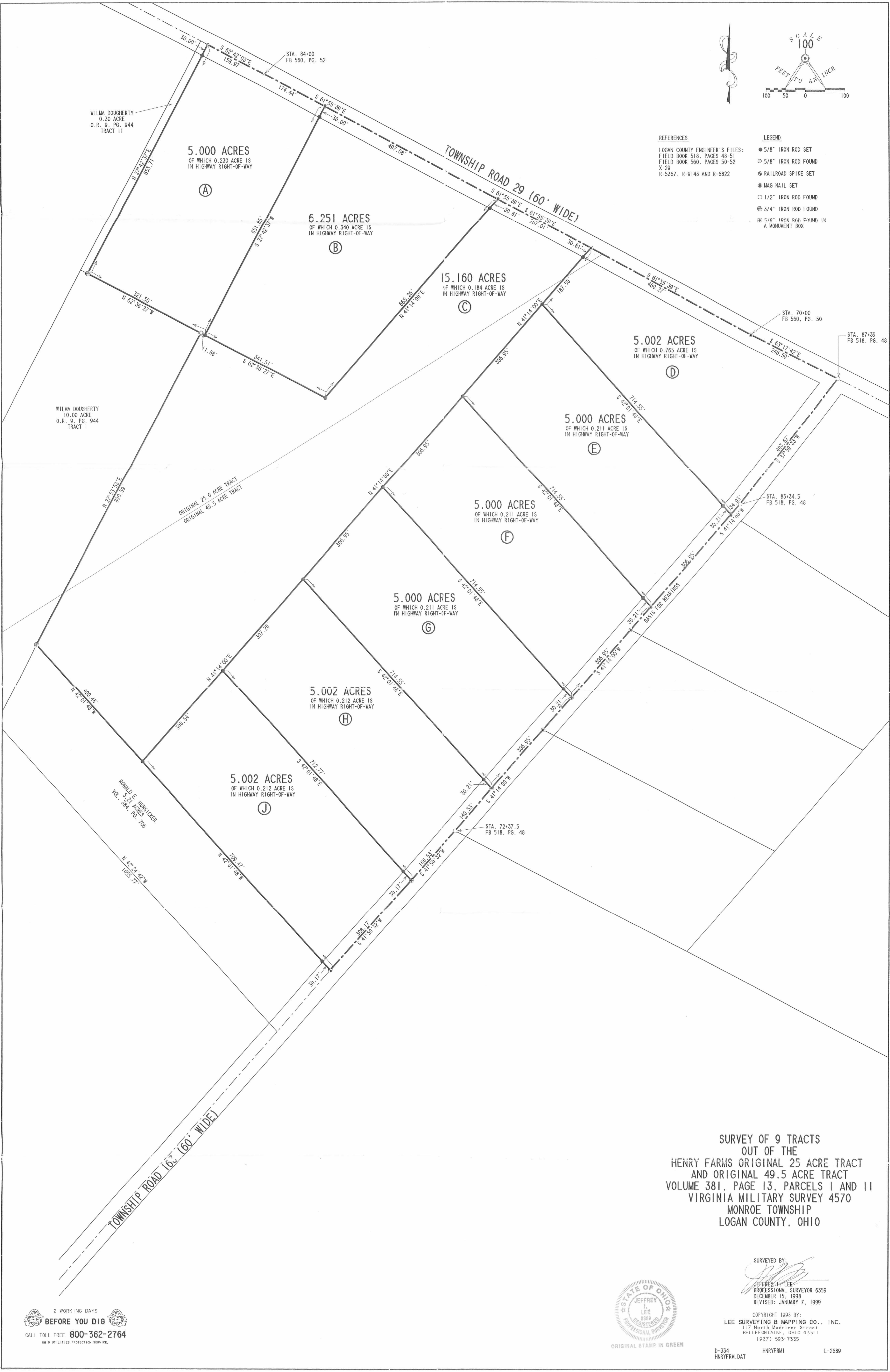


REFERENCES

LOGAN COUNTY ENGINEER'S FILES:
 FIELD BOOK 518, PAGES 48-51
 FIELD BOOK 560, PAGES 50-52
 X-29
 R-5367, R-9143 AND R-6822

LEGEND

- 5/8" IRON ROD SET
- ⊙ 5/8" IRON ROD FOUND
- ⊕ RAILROAD SPIKE SET
- ⊙ MAG NAIL SET
- 1/2" IRON ROD FOUND
- ⊙ 3/4" IRON ROD FOUND
- ⊕ 5/8" IRON ROD FOUND IN A MONUMENT BOX



**SURVEY OF 9 TRACTS
 OUT OF THE
 HENRY FARMS ORIGINAL 25 ACRE TRACT
 AND ORIGINAL 49.5 ACRE TRACT
 VOLUME 381, PAGE 13, PARCELS I AND II
 VIRGINIA MILITARY SURVEY 4570
 MONROE TOWNSHIP
 LOGAN COUNTY, OHIO**

SURVEYED BY:

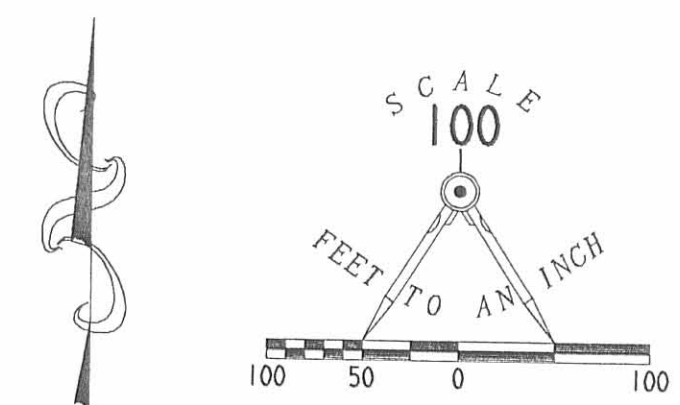
 JEFFREY L. LEE
 PROFESSIONAL SURVEYOR 6359
 DECEMBER 15, 1998
 REVISED: JANUARY 7, 1999



COPYRIGHT 1998 BY:
 LEE SURVEYING & MAPPING CO., INC.
 117 North Madison Street
 BELLEFONTAINE, OHIO 43311
 (937) 593-7335

2 WORKING DAYS
BEFORE YOU DIG
 CALL TOLL FREE 800-362-2764
 OHIO UTILITIES PROTECTION SERVICE

D-334 HURYFRM.DAT HURYFRM1 L-2689



REFERENCES

LOGAN COUNTY ENGINEER'S FILES:
 FIELD BOOK 518, PAGES 48-51
 FIELD BOOK 560, PAGES 50-52
 X-29
 R-5367, R-9143 AND R-6822

LEGEND

- 5/8" IRON ROD SET
- ⊗ 5/8" IRON ROD FOUND
- ⊙ RAILROAD SPIKE SET
- ⊙ MAG NAIL SET
- 1/2" IRON ROD FOUND
- ⊙ 3/4" IRON ROD FOUND
- ⊙ 5/8" IRON ROD FOUND IN A MONUMENT BOX

DONALD M. STEWART AND
 JANE E. STEWART
 ORIG. 16.61 ACRES
 VOL. 399, PG. 656

JAMES NORVIEL
 ORIG. 21.73 ACRES
 O.R. 205, PG. 618

SURVEY OF 6 TRACTS
 OUT OF THE
 HENRY FARMS 39.55 ACRE TRACT
 VOLUME 381, PAGE 13, PARCEL 111
 VIRGINIA MILITARY SURVEY 4570
 MONROE TOWNSHIP
 LOGAN COUNTY, OHIO

SURVEYED BY:

JEFFREY A. LEE
 PROFESSIONAL SURVEYOR 6359
 DECEMBER 15, 1998



COPYRIGHT 1998 BY:
 LEE SURVEYING & MAPPING CO., INC.
 117 North Medriver Street
 BELLEFONTAINE, OHIO 43311
 (937) 593-7335

ORIGINAL STAMP IN GREEN

D-334
 REVISION DATE: JANUARY 6, 1999

L-2689

2 WORKING DAYS
BEFORE YOU DIG
 CALL TOLL FREE 800-362-2764
 OHIO UTILITIES PROTECTION SERVICE.

5367 JP-2



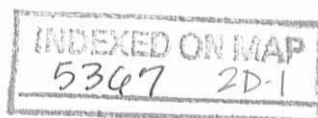
Description of a 10.00 Acre Tract out of Reed O. Armentrout's
75.44 acres in Monroe Township

Situated in the County of Logan, State of Ohio, and in the Township of Monroe, being part of Virginia Military Survey No. 4570 bounded and described as follows:

Beginning at a railroad spike in the center of Logan County Road # 29 at the northeast corner of Don K. Miller's 3.50 acre tract which is also station 85+78.90, Logan County Highway Department stationing, thence with the east line of Don K. Miller's 3.50 acre tract and the east line of Don K. Miller's 93.35 acre tract, South 27 Degrees 40 Minutes West 654.27 feet to an iron pin which is the true point of beginning of this description.

Thence continuing with the east line of said Don K. Miller's 93.35 acres, South 27 Degrees 40 Minutes West 1209.92 feet to a post at the southwest corner of Reed O. Armentrout's 75.44 acres; thence with the south line of said Armentrout's 75.44 acres, South 42 Degrees 14 Minutes East 364.17 feet to an iron pin; thence North 27 Degrees 40 Minutes East 1337.56 feet to a iron pin; thence North 62 Degrees 45 Minutes West 342.03 feet to the point of beginning, containing 10.00 acres, more or less, out of Reed O. Armentrout's 75.44 acres as described in Vol. 325, pages 350 and 352, Logan County Deed Records.

Surveyed February 3, 1973
By Larry E. Blosser, SIT # 1199



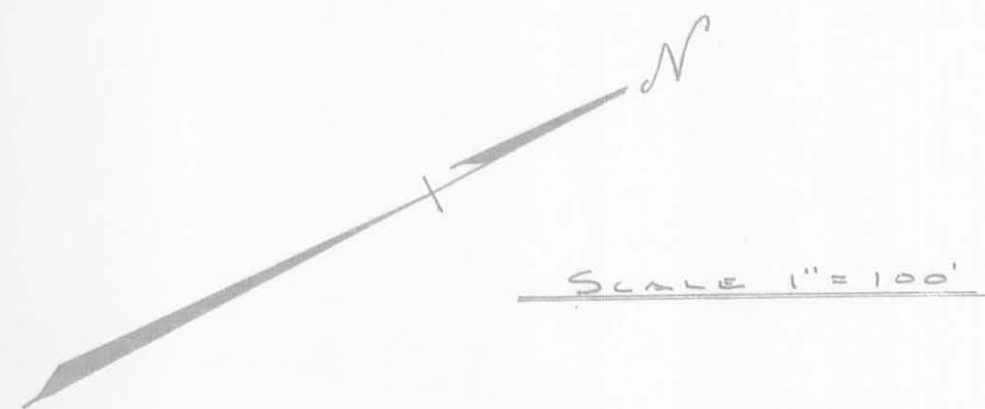
Description of Land for 20 foot wide Road
Situating in the County of Logan, State of Ohio, and in the
Township of Monroe, being part of Virginia Military Survey
No. 4570, bounded as described as follows:

Beginning at a railroad spike in the center of Logan County
Road # 29, at the northeast corner of Don K. Miller's 3.50 acre
tract, said point also being at Station 85+78.90, Logan County
Highway Department stationing, thence with the east line of said
Don K. Miller's 3.50 acre tract, and the east line of Don K. Miller's
93.35 acre tract, South 27 Degrees 40 minutes West 654.27 feet to
an iron pin; thence South 62 Degrees 45 Minutes East 20.00 feet to
an iron pin; thence North 27 Degrees 40 minutes East 654.27 feet to
an iron pin in the center of said Logan County Road # 29; thence with
the centerline of said road, North 62 Degrees 45 minutes West 20.00
feet to the point of beginning, containing 0.30 acres, more or less,
out of Reed O. Armentrout's 75.44 acres as described in Vol. 325, pages
350 and 352, Logan County Deed Records.

Surveyed February 3, 1973
By Larry E. Blosser SIT # 1199

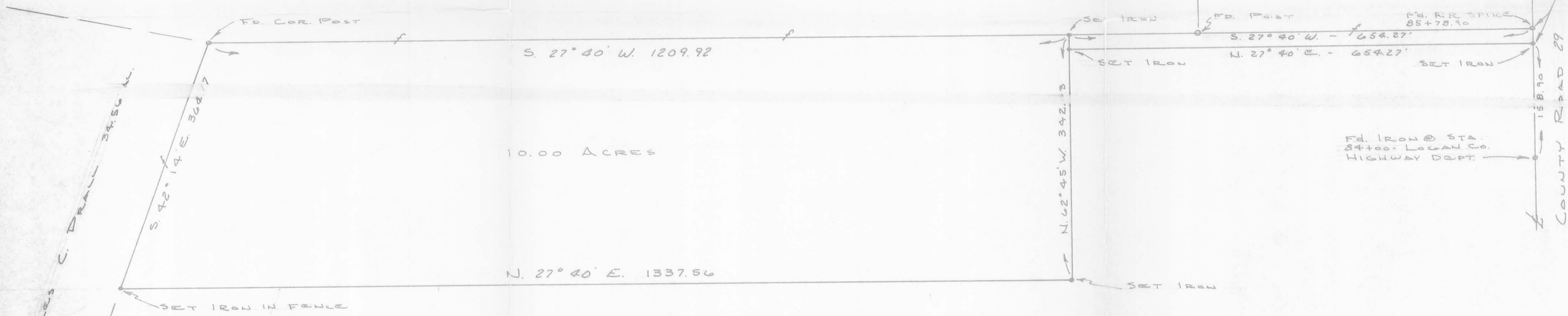
Cecil E. Montgomery
R.M. Dumm. #3151
2/8/73

INDEXED ON MAP
5367 2D-2



DON K. MILLER ETUX 93.35 AC.

DON K. MILLER ETUX
3.50 AC.



10.00 ACRES

N. 27° 40' E. 1337.56

S. 27° 40' W. 1209.92

N. 62° 45' W. 342.13

S. 27° 40' W. - 654.27'
N. 27° 40' E. - 654.27'

N. 62° 45' W. 20.00'
COUNTY ROAD 29

FD. IRON @ STA.
84+00. LOCAL CO.
HIGHWAY DEPT.

REED O. ARMENTROUT 75.44 AC.

537 2P

INDEXED ON MAP

A SURVEY OF A 10.00 ACRE TRACT OUT
OF REED O. ARMENTROUT'S 75.44 ACES.
MONROE TOWNSHIP, LOGAN COUNTY
VIRGINIA MILITARY SURVEY 4570
FEBRUARY 1973 BY LARRY E. BLOSSER # 1199
SIT # 1199

Larry E. Blosser
Reg. Surv. # 3151

MARK S. DIDDLE
(5-8-73)

Legal Description - 5.21 Acre Tract

Situated in the County of Logan, State of Ohio and in the Township of Monroe, being part of Virginia Military Survey No. 4570, bounded and described as follows:

Beginning at a iron pin in the center of Monroe Township Road # 163 at the intersection of the south line of Reed O. Armentrout's 75.44 acre tract which is also the north line of Charles C. Prall's 34.56 acres; thence with the center of said road North 41 Degrees 46 minutes East 210.00 feet to a railroad spike which is the true point of beginning of this description.

Thence continuing with the center of Monroe Township Road 163 North 41 Degrees 46 Minutes East 210.00 feet to a railroad spike; thence North 42 Degrees 14 Minutes West 1112.93 feet to a iron pin; thence South 27 Degrees 40 Minutes West 222.40 feet to a point; thence South 42 Degrees 14 Minutes East 1058.45 feet to the point of beginning, containing 5.21 acres, more or less, out of Reed O. Armentrout's 75.44 acres as recorded in Logan County Deed Records Volume 325, pages 350 & 352.

Surveyed April 14, 1973

By Larry E. Blosser
SIT # 1199

Checked By:

INDEXED ON MAP
5367 3D-1

LYNN D. ZELL
(5-8-73)

Legal Description - 4.95 Acre Tract

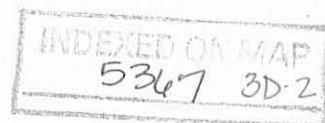
Situated in the County of Logan, State of Ohio and in the Township of Monroe, being part of Virginia Military Survey No. 4570, bounded and described as follows:

Beginning at a iron pin in the center of Monroe Township Road # 163 at the intersection of the south line of Reed O. Armentrout's 75.44 acre tract which is also the north line of Charles C. Prall's 34.56 acres; thence with the center of said road North 41 Degrees 46 minutes East 210.00 feet to a railroad spike; thence North 42 Degrees 14 minutes West 1059.45 feet to a point; thence South 27 Degrees 40 minutes West 222.40 feet to an iron pin in Prall's north line; thence with Prall's and Armentrout's line South 42 Degrees 14 minutes East 1003.98 feet to the point of beginning, containing 4.95 acres out of Reed O. Armentrout's 75.44 acres as recorded in Logan County Deed Records volume 325 pages 350 & 352.

Surveyed April 14, 1973

By Larry E. Blosser
SIT # 1199

Checked by:



DON K. MILLER et al 93.35 AC.

J. D. SMITH 10.00 AC.

CHARLES C. DRAW 39.56 AC.

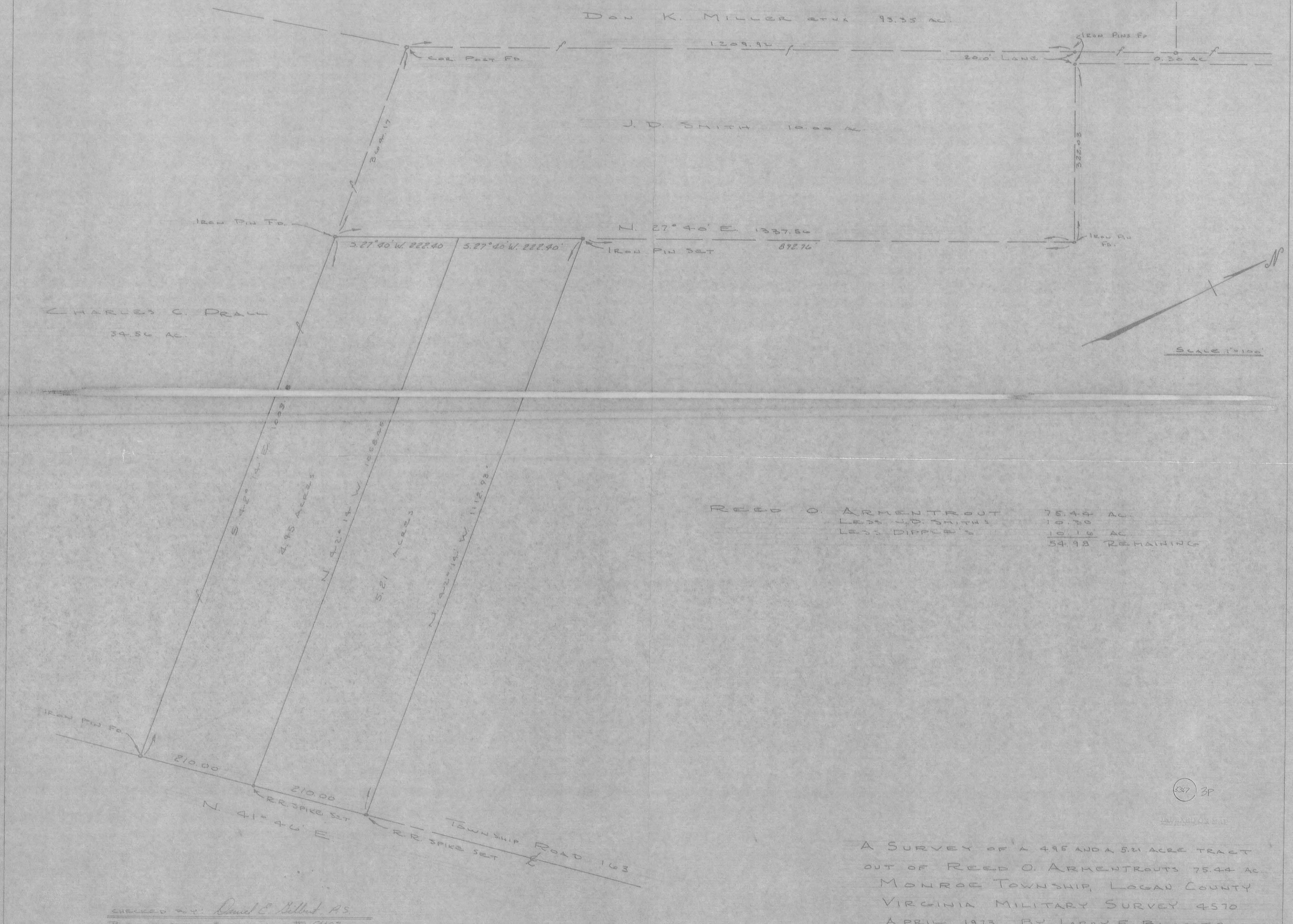
REED O. ARMENTROUT	75.44 AC.
LESS 40.51 AC.	10.30
LESS DIDDLE	10.16 AC.
	54.98 REMAINING

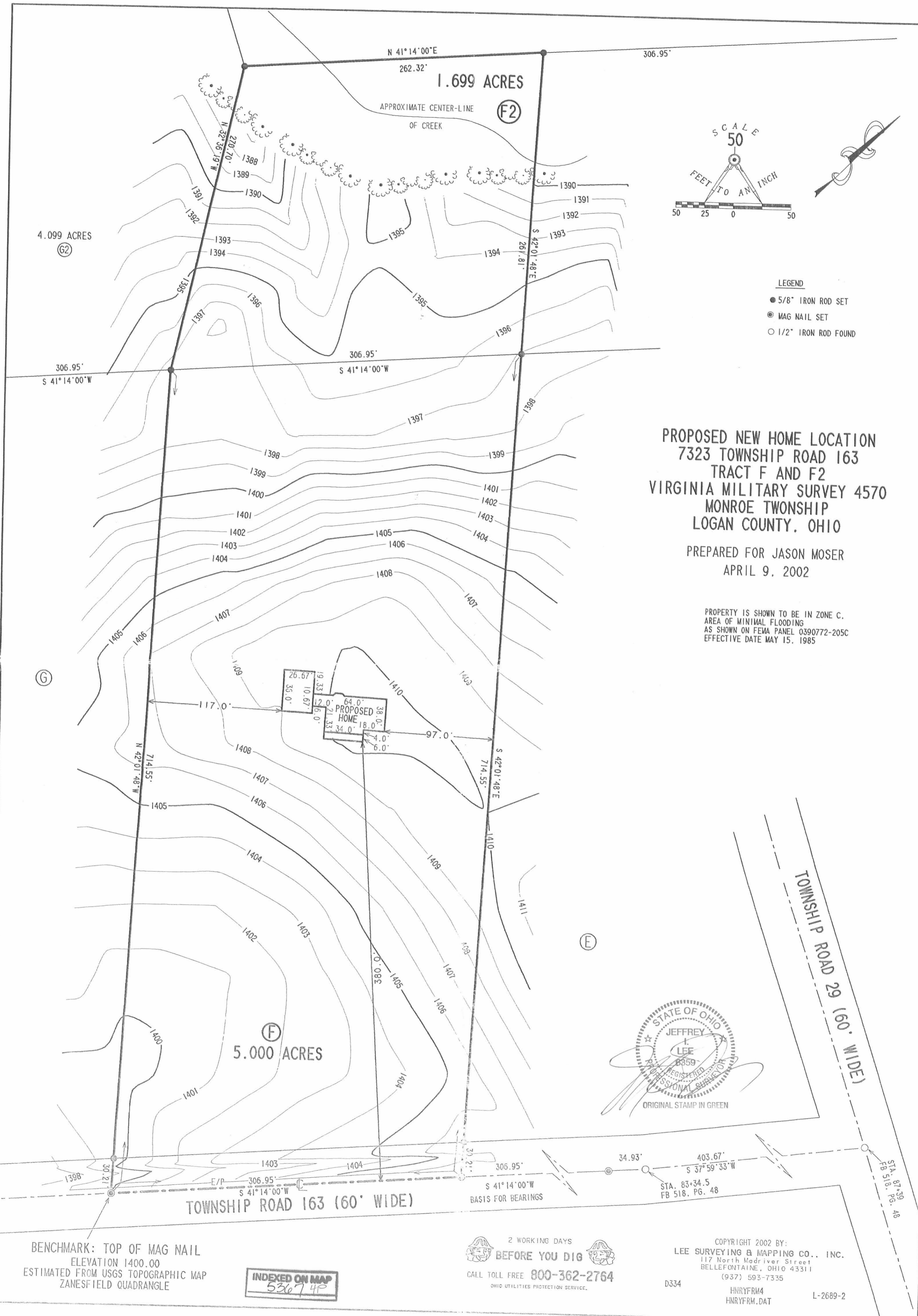
3367 3P

LARRY E. BLOSSER

A SURVEY OF A 495 AND A 521 ACRE TRACT
 OUT OF REED O. ARMENTROUTS 75.44 AC.
 MONROE TOWNSHIP, LOGAN COUNTY
 VIRGINIA MILITARY SURVEY 4570
 APRIL 1973 BY LARRY E. BLOSSER
 S.I.T. # 1199

CHECKED BY: Daniel C. Bellard, AS
 REGISTERED SURVEYOR # 5402

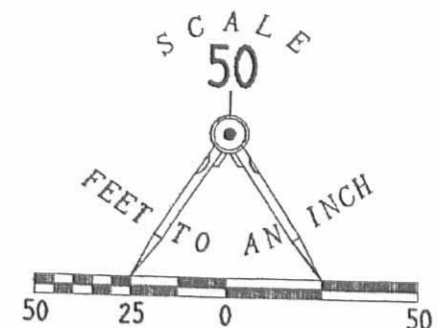




1.699 ACRES

4.099 ACRES

5.000 ACRES



LEGEND

- 5/8" IRON ROD SET
- ⊙ MAG NAIL SET
- 1/2" IRON ROD FOUND

PROPOSED NEW HOME LOCATION
 7323 TOWNSHIP ROAD 163
 TRACT F AND F2
 VIRGINIA MILITARY SURVEY 4570
 MONROE TOWNSHIP
 LOGAN COUNTY, OHIO

PREPARED FOR JASON MOSER
 APRIL 9, 2002

PROPERTY IS SHOWN TO BE IN ZONE C,
 AREA OF MINIMAL FLOODING
 AS SHOWN ON FEMA PANEL 0390772-205C
 EFFECTIVE DATE MAY 15, 1985



BENCHMARK: TOP OF MAG NAIL
 ELEVATION 1400.00
 ESTIMATED FROM USGS TOPOGRAPHIC MAP
 ZANESFIELD QUADRANGLE

INDEXED ON MAP
 536748

2 WORKING DAYS
BEFORE YOU DIG
 CALL TOLL FREE 800-362-2764
 OHIO UTILITIES PROTECTION SERVICE.

COPYRIGHT 2002 BY:
 LEE SURVEYING & MAPPING CO., INC.
 117 North Madriver Street
 BELLEFONTAINE, OHIO 43311
 (937) 593-7335
 D334 HNRVFRM4 HNRVFRM.DAT L-2689-2

REC'D 3-29-99 BMMJ OK ✓



Lee Surveying and Mapping Co., Inc.



Land Surveys • Topography • Subdivisions • Construction Layout

117 N. Madriver Street
Bellefontaine OH 43311

Phone: (937) 593-7335
Fax: (937) 593-7444

HENRY FARMS 0.846 ACRE TRACT TRACT D2

Lying in the Virginia Military Survey 4570, Monroe Township, Logan County, Ohio.

Being out of the Countrytyme Grove City, Ltd, 15.160 acre tract as deeded and described in Official Record 401, Page 842, Exhibit C of the Logan County Records of Deeds and being more particularly described as follows:

Beginning at a 1/2 inch iron rod found at the intersection of center-lines of Township Road 29 and Township Road 163.

THENCE, with the center-line of Township Road 29, (60 feet wide), N 63°-17'-42" W, a distance of 246.50 feet to a MAG nail set on a Point of Intersection at Station 70+00, (Field Book 560, Page 50).

THENCE, with the center-line of Township Road 29, N 61°-55'-39" W, a distance of 460.27 feet to a MAG nail set at the TRUE POINT OF BEGINNING.

THENCE, with the northwesterly line of the Countrytyme Grove City, Ltd, 5.000 acre tract, (O.R. 401, Pg. 842, Exhibit D), S 41°-14'-00" W, a distance of 187.50 feet to a 5/8 inch iron rod set, passing a 5/8 inch iron rod set at 30.81 feet.

THENCE, N 42°-01'-48" W, a distance of 261.81 feet to a 5/8 inch iron rod set.

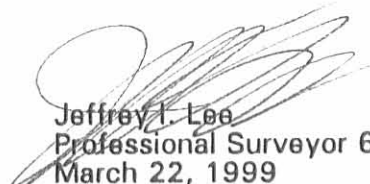
THENCE, with the southeasterly line of the Countrytyme Grove City, Ltd, 6.251 acre tract, (O.R. 401, Pg. 842, Exhibit B), N 41°-14'-00" E, a distance of 96.00 feet to a MAG nail set on the center-line of Township Road 29, passing a 5/8 inch iron rod set at 65.19 feet.

THENCE, with the center-line of Township Road 29, S 61°-55'-39" E, a distance of 267.01 feet to the point of beginning.

Containing 0.846 acre, of which 0.184 acre is within the highway right-of-way.

The basis for bearings is the center-line of Township Road 163 west of Station 83+34.5 being S 41°-14'-00" W, and all other bearings are from angles and distances measured in a field survey by Lee Surveying and Mapping Co., Inc. on December 15, 1998, and March 22, 1999.

Description prepared by:


Jeffrey I. Lee
Professional Surveyor 6359
March 22, 1999

L-2689



ORIGINAL STAMP IN GREEN

INDEX TO CHAIN
5367 5D-1



REC'D 3-29-99 SWJ OK ✓

Lee Surveying and Mapping Co., Inc.



Land Surveys • Topography • Subdivisions • Construction Layout

117 N. Madriver Street
Bellefontaine OH 43311

Phone: (937) 593-7335
Fax: (937) 593-7444

HENRY FARMS 1.832 ACRE TRACT TRACT E2

Lying in the Virginia Military Survey 4570, Monroe Township, Logan County, Ohio.

Being out of the Countrytyme Grove City, Ltd, 15.160 acre tract as deeded and described in Official Record 401, Page 842, Exhibit C of the Logan County Records of Deeds and being more particularly described as follows:

Beginning at a 1/2 inch iron rod found at the intersection of center-lines of Township Road 29 and Township Road 163.

THENCE, with the center-line of Township Road 163 (60 feet wide), S 37°-59'-33" W, a distance of 403.67 feet to a 1/2 inch iron rod found at Point of Intersection Station 83+34.5 (Logan County Engineer's F.B. 518, Pg. 48).

THENCE, with the center-line of Township Road 163, S 41°-14'-00" W, a distance of 34.93 feet to a MAG nail set.

7-31? THENCE, with the northeasterly line of the Countrytyme 5.000 acre tract, (O.R. 401, Pg. 842, Exhibit E), N 42°-01'-48" W, a distance of 714.55 feet to a 5/8 inch iron rod set at the TRUE POINT OF BEGINNING, passing a 5/8 inch iron rod set at 30.21 feet.

THENCE, with the northwesterly line of the said 5.000 acre tract, S 41°-14'-00" W, a distance of 306.95 feet to a 5/8 inch iron rod set.

THENCE, N 42°-01'-48" W, a distance of 261.81 feet to a 5/8 inch iron rod set.

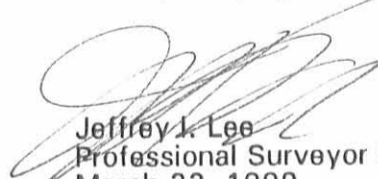
THENCE, with the southeasterly line of the Countrytyme Grove City, Ltd, 6.251 acre tract, (O.R. 401, Pg. 842, Exhibit B), N 41°-14'-00" E, a distance of 306.95 feet to a 5/8 inch iron rod set.

THENCE, S 42°-01'-48" E, a distance of 261.81 feet to the point of beginning.

Containing 1.832 acres.

The basis for bearings is the center-line of Township Road 163 west of Station 83+34.5 being S 41°-14'-00" W, and all other bearings are from angles and distances measured in a field survey by Lee Surveying and Mapping Co., Inc. on December 15, 1998, and March 22, 1999.

Description prepared by:


Jeffrey J. Lee
Professional Surveyor 6359
March 22, 1999

L-2689



5367 5D-2



REC'D 3-29-99 SMLY OK ✓

Lee Surveying and Mapping Co., Inc.



Land Surveys • Topography • Subdivisions • Construction Layout

117 N. Madriver Street
Bellefontaine OH 43311

Phone: (937) 593-7335
Fax: (937) 593-7444

HENRY FARMS 1.699 ACRE TRACT TRACT F2

Lying in the Virginia Military Survey 4570, Monroe Township, Logan County, Ohio.

Being out of the Countrytyme Grove City, Ltd, 15.160 acre tract as deeded and described in Official Record 401, Page 842, Exhibit C of the Logan County Records of Deeds and being more particularly described as follows:

Beginning at a 1/2 inch iron rod found at the intersection of center-lines of Township Road 29 and Township Road 163.

THENCE, with the center-line of Township Road 163 (60 feet wide), S 37°-59'-33" W, a distance of 403.67 feet to a 1/2 inch iron rod found at Point of Intersection Station 83 + 34.5 (Logan County Engineer's F.B. 518, Pg. 48).

THENCE, with the center-line of Township Road 163, S 41°-14'-00" W, a distance of 341.88 feet to a MAG nail set.

THENCE, with the northeasterly line of the Countrytyme Grove City, Ltd, 5.000 acre tract, (O.R. 401, Pg. 842, Exhibit F), N 42°-01'-48" W, a distance of 714.55 feet to a 5/8 inch iron rod set at the TRUE POINT OF BEGINNING, passing a 5/8 inch iron rod set at 30.21 feet.

THENCE, with the northwesterly line of the said 5.000 acre tract, S 41°-14'-00" W, a distance of 306.95 feet to a 5/8 inch iron rod set.

THENCE, N 32°-36'-19" W, a distance of 270.70 feet to a 5/8 inch iron rod set.

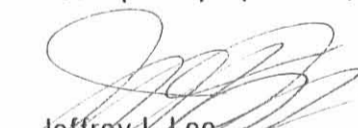
THENCE, with the southeasterly line of the Countrytyme Grove City, Ltd, 6.251 acre tract, (O.R. 401, Pg. 842, Exhibit B), N 41°-14'-00" E, a distance of 262.32 feet to a 5/8 inch iron rod set.

THENCE, S 42°-01'-48" E, a distance of 261.81 feet to the point of beginning.

Containing 1.699 acres.

The basis for bearings is the center-line of Township Road 163 west of Station 83 + 34.5 being S 41°-14'-00" W, and all other bearings are from angles and distances measured in a field survey by Lee Surveying and Mapping Co., Inc. on December 15, 1998, and March 22, 1999.

Description prepared by:


Jeffrey I. Lee
Professional Surveyor 6359
March 22, 1999

L-2689



ORIGINAL STAMP IN GREEN

INDEXED
5367 5D-3



REC'D 3-29-99 SWJ OK ✓

Lee Surveying and Mapping Co., Inc.



Land Surveys • Topography • Subdivisions • Construction Layout

117 N. Madriver Street
Bellefontaine OH 43311

Phone: (937) 593-7335
Fax: (937) 593-7444

HENRY FARMS 4.099 ACRE TRACT TRACT G2

Lying in the Virginia Military Survey 4570, Monroe Township, Logan County, Ohio.

Being out of the Countrytyme Grove City, Ltd, 15.160 acre tract as deeded and described in Official Record 401, Page 842, Exhibit C of the Logan County Records of Deeds and being more particularly described as follows:

Beginning at a 1/2 inch iron rod found at the intersection of center-lines of Township Road 29 and Township Road 163.

THENCE, with the center-line of Township Road 163 (60 feet wide), S 37°-59'-33" W, a distance of 403.67 feet to a 1/2 inch iron rod found at Point of Intersection Station 83 + 34.5 (Logan County Engineer's F.B. 518, Pg. 48).

THENCE, with the center-line of Township Road 163, S 41°-14'-00" W, a distance of 648.83 feet to a MAG nail set.

THENCE, with the northeasterly line of the Countrytyme Grove City, Ltd, 5.000 acre tract, (O.R. 401, Pg. 842, Exhibit G), N 42°-01'-48" W, a distance of 714.55 feet to a 5/8 inch iron rod set at the TRUE POINT OF BEGINNING, passing a 5/8 inch iron rod set at 30.21 feet.

THENCE, with the northwesterly line of the said 5.000 acre tract, S 41°-14'-00" W, a distance of 306.95 feet to a 5/8 inch iron rod set.

THENCE, N 42°-01'-48" W, a distance of 551.70 feet to a 5/8 inch iron rod set.

THENCE, with the southeasterly line of the Wilma Dougherty 10.00 acre tract, (O.R. 9, Pg. 944, Tract I), N 27°-53'-53" E, a distance of 239.50 feet to a 3/4 inch iron rod found.

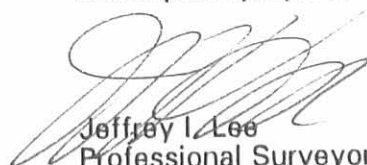
THENCE, with the southerly lines of the Countrytyme Grove City, Ltd, 5.000 acre tract, (O.R. 401, Pg. 842, Exhibit A) and 6.251 acre tract, (O.R. 401, Pg. 842, Exhibit B), S 62°-36'-27" E, a distance of 353.39 feet to a 5/8 inch iron rod set, passing a 5/8 inch iron rod set at 11.88 feet.

THENCE, S 32°-36'-19" E, a distance of 270.70 feet to the point of beginning.

Containing 4.099 acres.

The basis for bearings is the center-line of Township Road 163 west of Station 83 + 34.5 being S 41°-14'-00" W, and all other bearings are from angles and distances measured in a field survey by Lee Surveying and Mapping Co., Inc. on December 15, 1998, and March 22, 1999.

Description prepared by:


Jeffrey I. Lee
Professional Surveyor 6359
March 22, 1999

L-2689



ORIGINAL STAMP IN GREEN

INDEXED MAP
5367 5D-4



REC'D 3-29-99 SWM OK ✓

Lee Surveying and Mapping Co., Inc.



Land Surveys • Topography • Subdivisions • Construction Layout

117 N. Madriver Street
Bellefontaine OH 43311

Phone: (937) 593-7335
Fax: (937) 593-7444

HENRY FARMS 3.600 ACRE TRACT TRACT H2

Lying in the Virginia Military Survey 4570, Monroe Township, Logan County, Ohio.

Being out of the Countrytyme Grove City, Ltd, 15.160 acre tract as deeded and described in Official Record 401, Page 842, Exhibit C of the Logan County Records of Deeds and being more particularly described as follows:

Beginning at a 1/2 inch iron rod found at the intersection of center-lines of Township Road 29 and Township Road 163.

THENCE, with the center-line of Township Road 163 (60 feet wide), S 37°-59'-33" W, a distance of 403.67 feet to a 1/2 inch iron rod found at Point of Intersection Station 83 + 34.5 (Logan County Engineer's F.B. 518, Pg. 48).

THENCE, with the center-line of Township Road 163, S 41°-14'-00" W, a distance of 955.78 feet to a MAG nail set.

THENCE, with the northeasterly line of the Countrytyme Grove City, Ltd, 5.002 acre tract, (O.R. 401, Pg. 842, Exhibit H), N 42°-01'-48" W, a distance of 714.55 feet to a 5/8 inch iron rod set at the TRUE POINT OF BEGINNING.

THENCE, with the northwesterly line of the said 5.002 acre tract, S 41°-14'-00" W, a distance of 307.26 feet to a 5/8 inch iron rod set.

THENCE, N 42°-01'-48" W, a distance of 476.24 feet to a 5/8 inch iron rod set.

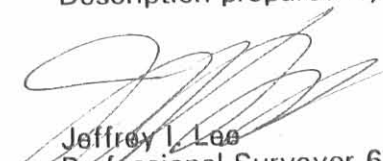
THENCE, with the southeasterly line of the Wilma Dougherty 10.00 acre tract, (O.R. 9, Pg. 944, Tract I), N 27°-53'-53" E, a distance of 324.87 feet to a 5/8 inch iron rod set.

THENCE, S 42°-01'-48" E, a distance of 551.70 feet to the point of beginning.

Containing 3.600 acres.

The basis for bearings is the center-line of Township Road 163 west of Station 83 + 34.5 being S 41°-14'-00" W, and all other bearings are from angles and distances measured in a field survey by Lee Surveying and Mapping Co., Inc. on December 15, 1998, and March 22, 1999.

Description prepared by:


Jeffrey I. Lee
Professional Surveyor 6359
March 22, 1999

L-2689



ORIGINAL STAMP IN GREEN

5367 5D-5



REC'D 3-29-99 JML/OK

Lee Surveying and Mapping Co., Inc.



Land Surveys • Topography • Subdivisions • Construction Layout

117 N. Madriver Street
Bellefontaine OH 43311

Phone: (937) 593-7335
Fax: (937) 593-7444

HENRY FARMS 3.084 ACRE TRACT TRACT J2

Lying in the Virginia Military Survey 4570, Monroe Township, Logan County, Ohio.

Being out of the Countrytyme Grove City, Ltd, 15.160 acre tract as deeded and described in Official Record 401, Page 842, Exhibit C of the Logan County Records of Deeds and being more particularly described as follows:

Beginning at a 1/2 inch iron rod found at the intersection of center-lines of Township Road 29 and Township Road 163.

THENCE, with the center-line of Township Road 163 (60 feet wide), S 37°-59'-33" W, a distance of 403.67 feet to a 1/2 inch iron rod found at Point of Intersection Station 83 + 34.5 (Logan County Engineer's F.B. 518, Pg. 48).

THENCE, with the center-line of Township Road 163, S 41°-14'-00" W, a distance of 1096.31 feet to a 1/2 inch iron rod found at Point of Intersection Station 72 + 37.5 (Logan County Engineer's F.B. 518, Pg. 48).

THENCE, with the center-line of Township Road 163, S 41°-50'-32" W, a distance of 166.53 feet to a MAG nail set.

THENCE, with the northeasterly line of the Countrytyme Grove City Ltd. 5.002 acre tract, (O.R. 401, Pg. 842, Exhibit I), N 42°-01'-48" W, a distance of 712.77 feet to a 5/8 inch iron rod set at the TRUE POINT OF BEGINNING, passing a 5/8 inch iron rod set at 30.17 feet.

THENCE, with the northwesterly line of the said 5.002 acre tract, S 41°-14'-00" W, a distance of 308.54 feet to a 5/8 inch iron rod set.

THENCE, with the northeasterly line of the Ronald E. Hunsicker 5.21 acre tract, (Vol. 384, Pg. 706), N 42°-01'-48" W, a distance of 400.48 feet to a 3/4 inch iron rod found.

THENCE, with the southeasterly line of the Wilma Dougherty 10.00 acre tract, (O.R. 9, Pg. 944, Tract I), N 27°-53'-53" E, a distance of 326.22 feet to a 5/8 inch iron rod set.

THENCE, S 42°-01'-48" E, a distance of 476.24 feet to the point of beginning.

Containing 3.084 acres.

The basis for bearings is the center-line of Township Road 163 west of Station 83 + 34.5 being S 41°-14'-00" W, and all other bearings are from angles and distances measured in a field survey by Lee Surveying and Mapping Co., Inc. on December 15, 1998, and March 22, 1999.

Description prepared by:

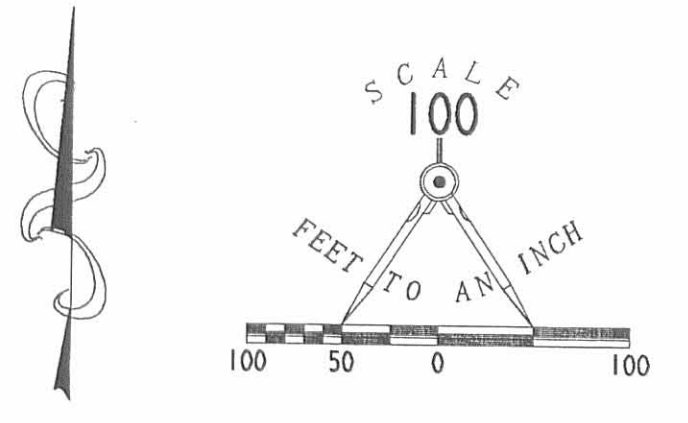
Jeffrey I. Lee
Professional Surveyor 6359
March 22, 1999

L-2689



ORIGINAL STAMP IN GREEN

5367 5D-4

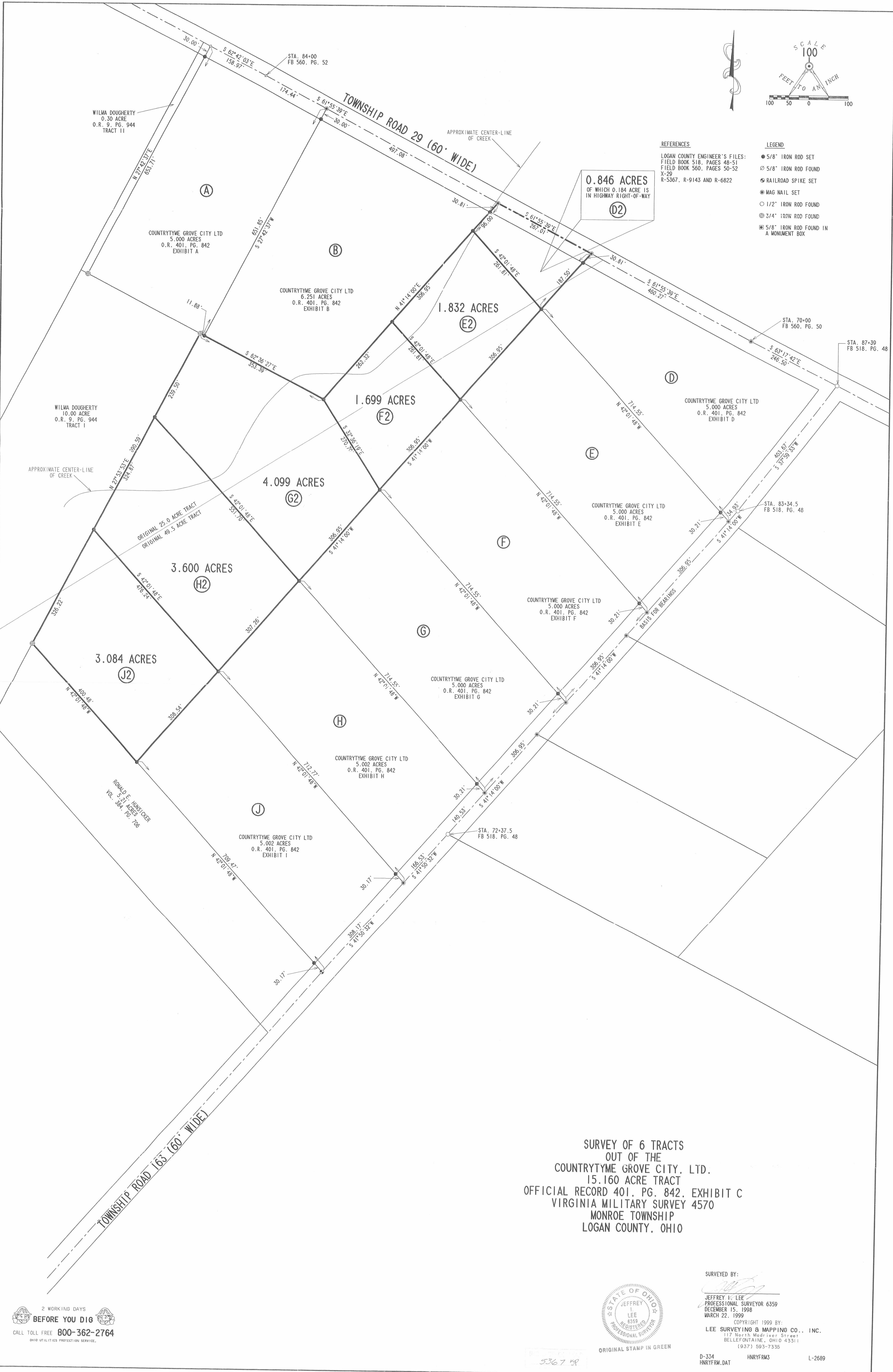


REFERENCES

LOGAN COUNTY ENGINEER'S FILES:
 FIELD BOOK 518, PAGES 48-51
 FIELD BOOK 560, PAGES 50-52
 X-29
 R-5367, R-9143 AND R-6822

LEGEND

- 5/8" IRON ROD SET
- 5/8" IRON ROD FOUND
- ⊙ RAILROAD SPIKE SET
- ⊙ MAG NAIL SET
- 1/2" IRON ROD FOUND
- ⊙ 3/4" IRON ROD FOUND
- ⊙ 5/8" IRON ROD FOUND IN A MONUMENT BOX



0.846 ACRES
 OF WHICH 0.184 ACRE IS
 IN HIGHWAY RIGHT-OF-WAY
 (D2)

**SURVEY OF 6 TRACTS
 OUT OF THE
 COUNTRYTME GROVE CITY, LTD.
 15.160 ACRE TRACT
 OFFICIAL RECORD 401, PG. 842, EXHIBIT C
 VIRGINIA MILITARY SURVEY 4570
 MONROE TOWNSHIP
 LOGAN COUNTY, OHIO**



SURVEYED BY:
 JEFFREY L. LEE
 PROFESSIONAL SURVEYOR 6359
 DECEMBER 15, 1998
 MARCH 22, 1999
 COPYRIGHT 1999 BY:
LEE SURVEYING & MAPPING CO., INC.
 117 North Medraker Street
 BELLEFONTAINE, OHIO 43311
 (937) 593-7335

2 WORKING DAYS
BEFORE YOU DIG
 CALL TOLL FREE **800-362-2764**
 OHIO UTILITIES PROTECTION SERVICE.

D-324 HNRVFRM.DAT HNRVFRM3 L-2689

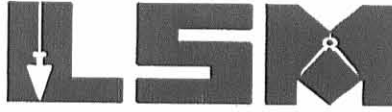
5367 59

REC'D 4-16-02 SMJ OK

Lee Surveying and Mapping Co., Inc.

Land Surveys • Topography • Subdivisions • Construction Layout

117 N. Madriver St.
Bellefontaine OH 43311



Phone: (937) 593-7335
Fax: (937) 593-7444

THOMPSON 10.002 ACRE TRACT

Lying in the Virginia Military Survey 4570, Monroe Township, Logan County, Ohio.

Being all of the John E. Thompson and Mary J. Thompson 5.001 acre tract as deeded and described in Official Record 406, Page 995 (Tract L) and 5.001 acre tract as deeded and described in Official Record 518, Page 649 (Tract M), of the Logan County Records of Deeds and being more particularly described as follows:

Beginning at a 1/2 inch iron rod found at the intersection of center-lines of Township Road 29 and Township Road 163.

THENCE, with the center-line of Township Road 163 (60 feet wide), S 37°-59'-33" W, a distance of 403.67 feet to a 1/2 inch iron rod found at Point of Intersection Station 83+34.5 (Logan County Engineer's F.B. 518, Pg. 48).

THENCE, with the center-line of Township Road 163, S 41°-14'-00" W, a distance of 81.92 feet to a MAG nail set at the TRUE POINT OF BEGINNING.

THENCE, with the south line of the Robert G. Bryden 5.002 acre tract (O.R. 472, Pg. 501) and with the south line of the Randall E. Huffer 5.003 acre tract (O.R. 427, Pg. 830), S 62°-38'-54" E, a distance of 663.60 feet to a 5/8 inch iron rod set, passing a 5/8 inch iron rod set at 30.90 feet.

THENCE, with the west line of the Countrytyme Grove City, Ltd. 14.326 acre tract (O.R. 401, Pg. 842, Tract Q), S 41°-14'-00" W, a distance of 676.26 feet to a 5/8 inch iron rod set, passing a 5/8 inch iron rod set at 338.13 feet.

THENCE, with the north line of the Matthew D. Young 5.001 acre tract (O.R. 468, Pg. 907) N 62°-38'-54" W, a distance of 663.60 feet to a MAG nail set on the center-line of Township Road 163, passing a 5/8 inch iron rod set at 632.70 feet.

THENCE, with the center-line of Township Road 163, N 41°-14'-00" E, a distance of 676.26 feet to the point of beginning, passing a MAG nail set at 338.13 feet.

Containing 10.002 acres, of which 0.466 acre is within the highway right-of-way.

The basis for bearings is the center-line of Township Road 163 west of Station 83+34.5 being S 41°-14'-00" W, and all other bearings are from angles and distances measured in a field survey by Lee Surveying and Mapping Co., Inc. on December 15, 1998 and April 15, 2002.

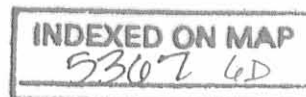


ORIGINAL STAMP IN GREEN

Description prepared by:

Jeffrey I. Lee
Professional Surveyor 6359
December 18, 1998

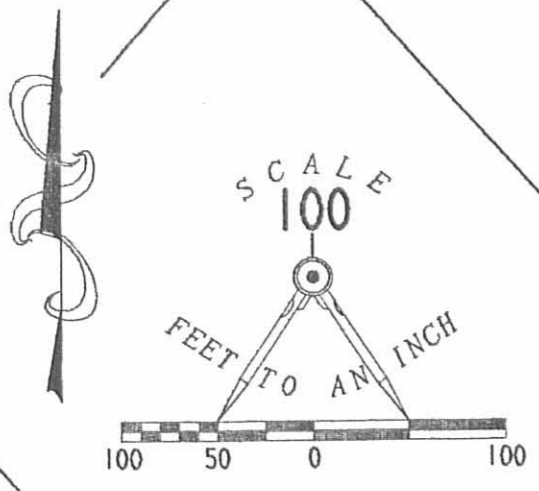
L-2689



REC'D 4-16-02 SMY OK

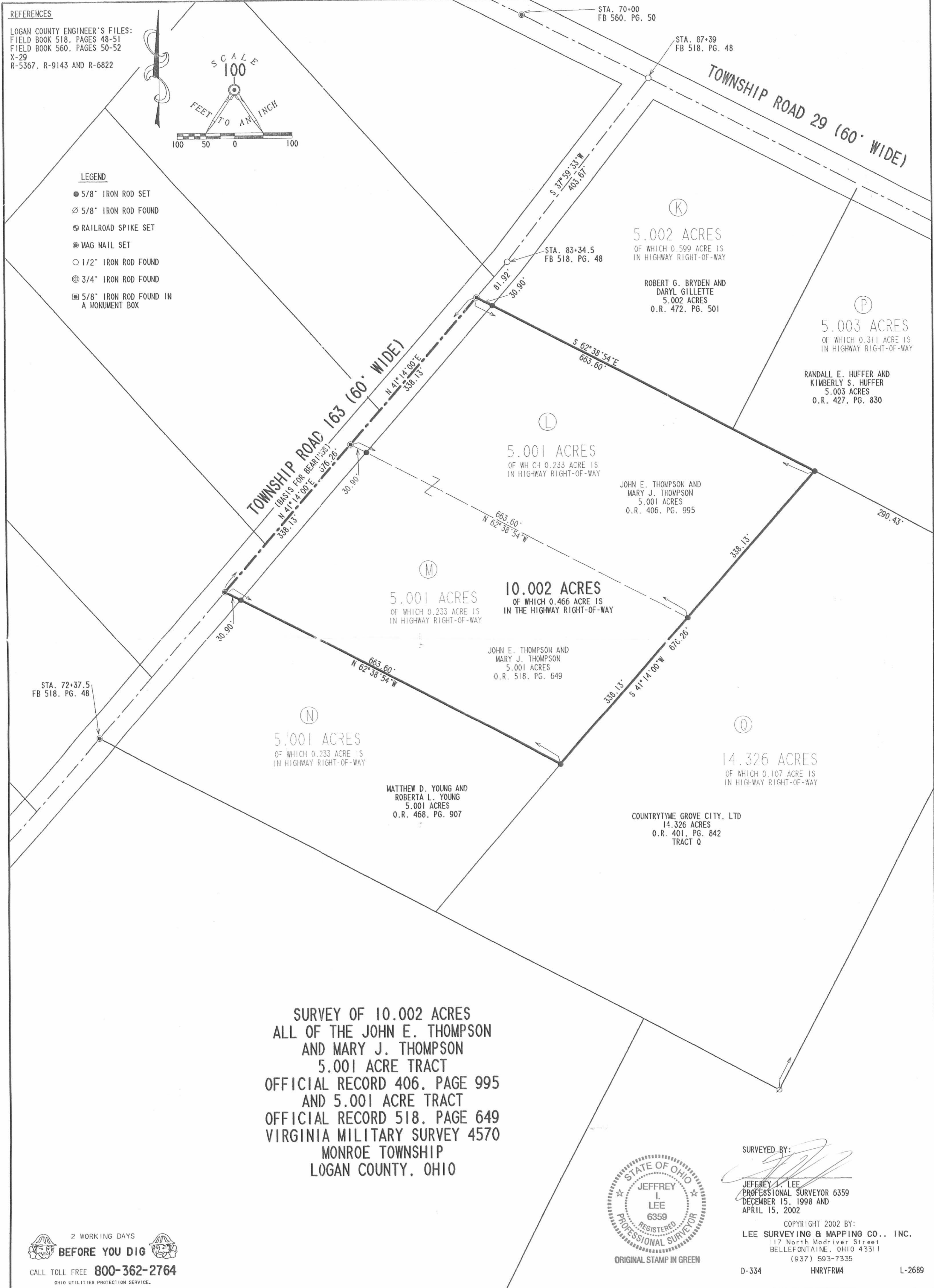
REFERENCES

LOGAN COUNTY ENGINEER'S FILES:
FIELD BOOK 518, PAGES 48-51
FIELD BOOK 560, PAGES 50-52
X-29
R-5367, R-9143 AND R-6822



LEGEND

- 5/8" IRON ROD SET
- ⊗ 5/8" IRON ROD FOUND
- ⊕ RAILROAD SPIKE SET
- ⊙ MAG NAIL SET
- 1/2" IRON ROD FOUND
- ⊗ 3/4" IRON ROD FOUND
- ⊠ 5/8" IRON ROD FOUND IN A MONUMENT BOX



**SURVEY OF 10.002 ACRES
ALL OF THE JOHN E. THOMPSON
AND MARY J. THOMPSON
5.001 ACRE TRACT
OFFICIAL RECORD 406, PAGE 995
AND 5.001 ACRE TRACT
OFFICIAL RECORD 518, PAGE 649
VIRGINIA MILITARY SURVEY 4570
MONROE TOWNSHIP
LOGAN COUNTY, OHIO**



SURVEYED BY:
Jeffrey I. Lee
JEFFREY I. LEE
PROFESSIONAL SURVEYOR 6359
DECEMBER 15, 1998 AND
APRIL 15, 2002

COPYRIGHT 2002 BY:
LEE SURVEYING & MAPPING CO., INC.
117 North Madriver Street
BELLEFONTAINE, OHIO 43311
(937) 593-7335

2 WORKING DAYS
BEFORE YOU DIG
CALL TOLL FREE **800-362-2764**
OHIO UTILITIES PROTECTION SERVICE.

D-334 HNRFRM4 L-2689

INDEXED ON MAP
53074

PROFESSIONAL SURVEYOR'S AFFIDAVIT

STATE OF OHIO
RECEIVED _____

TIME _____

RECORDED _____

OFFICIAL RECORD _____ PAGE _____

COUNTY RECORDER ss:

Jeffrey I. Lee, being first duly sworn, deposes and says that he is a Registered Professional Surveyor under the laws of the State of Ohio, being Professional Surveyor No. 6359 and that he is making this affidavit for the purposes of correcting the description to certain real estate situated in Monroe Township, Logan County, Ohio, presently owned by Countrytyme Grove City Ltd. by virtue of a Warranty Deed recorded in Official Record Volume 401, Page 842 of the Logan County Records of Deeds.

The corrected description being as follows with corrections underlined:

**HENRY FARMS
5.001 ACRE TRACT
TRACT M**

Lying in the Virginia Military Survey 4570, Monroe Township, Logan County, Ohio.

Being out of the Henry Farms 39.55 acre tract as deeded and described in Volume 381, Page 13, Parcel III, of the Logan County Records of Deeds and being more particularly described as follows:

Beginning at a 1/2 inch iron rod found at the intersection of center-lines of Township Road 29 and Township Road 163.

THENCE, with the center-line of Township Road 163 (60 feet wide), S 37°-59'-33" W, a distance of 403.67 feet to a 1/2 inch iron rod found at Point of Intersection Station 83+34.5 (Logan County Engineer's F.B. 518, Pg. 48).

THENCE, with the center-line of Township Road 163, S 41°-14'-00" W, a distance of 420.05 feet to a MAG nail set at the TRUE POINT OF BEGINNING.

THENCE, S 62°-38'-54" E, a distance of 663.60 feet to a 5/8 inch iron rod set, passing a 5/8 inch iron rod set at 30.90 feet.

THENCE, S 41°-14'-00" W, a distance of 338.13 feet to a 5/8 inch iron rod set.

THENCE, N 62°-38'-54" W, a distance of 663.60 feet to a MAG nail set on the center-line of Township Road 163 passing a 5/8 inch iron rod set at 632.70 feet.

THENCE, with the center-line of Township Road 163, N 41°-14'-00" E, a distance of 338.13 feet to the point of beginning.

Containing 5.001 acres, of which 0.233 acre is within the highway right-of-way.

The basis for bearings is the center-line of Township Road 163 west of Station 83+34.5 being S 41°-14'-00" W, and all other bearings are from angles and distances measured in a field survey by Lee Surveying and Mapping Co., Inc. on December 15, 1998. Description prepared by Jeffrey I. Lee, Professional Surveyor 6359, December 18, 1998.

Parcel # 28-139-00-00-007.012

INDEXED ON MAP
5367 7D-1

HENRY FARMS
5.001 ACRE TRACT
TRACT N

Lying in the Virginia Military Survey 4570, Monroe Township, Logan County, Ohio.

Being out of the Henry Farms 39.55 acre tract as deeded and described in Volume 381, Page 13, Parcel III, of the Logan County Records of Deeds and being more particularly described as follows:

Beginning at a 1/2 inch iron rod found at the intersection of center-lines of Township Road 29 and Township Road 163.

THENCE, with the center-line of Township Road 163 (60 feet wide), S 37°-59'-33" W, a distance of 403.67 feet to a 1/2 inch iron rod found at Point of Intersection Station 83+34.5 (Logan County Engineer's F.B. 518, Pg. 48).

THENCE, with the center-line of Township Road 163, S 41°-14'-00" W, a distance of 758.18 feet to a MAG nail set at the TRUE POINT OF BEGINNING.

THENCE, S 62°-38'-54" E, a distance of 663.60 feet to a 5/8 inch iron rod set, passing a 5/8 inch iron rod set at 30.90 feet.

THENCE, S 41°-14'-00" W, a distance of 338.13 feet to a 5/8 inch iron rod set.

THENCE, with the easterly line of the Donald M. Stewart original 16.61 acre tract (Vol. 399, Pg. 656), N 62°-38'-54" W, a distance of 663.60 feet to a MAG nail set on the center-line of Township Road 163 passing a 5/8 inch iron rod set at 632.70 feet.

THENCE, with the center-line of Township Road 163, N 41°-14'-00" E, a distance of 338.13 feet to the point of beginning.

Containing 5.001 acres, of which 0.233 acre is within the highway right-of-way.

The basis for bearings is the center-line of Township Road 163 west of Station 83+34.5 being S 41°-14'-00" W, and all other bearings are from angles and distances measured in a field survey by Lee Surveying and Mapping Co., Inc. on December 15, 1998. Description prepared by Jeffrey I. Lee, Professional Surveyor 6359, December 18, 1998 and revised on January 6, 1999.

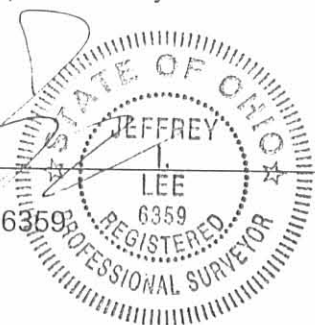
Parcel # 28-139-00-00-007.013

This affidavit is made in compliance with Revised Code of Ohio Sec. 5301.252 and particularly to show an affidavit of a professional surveyor to reconcile conflicts and ambiguities in descriptions of land in recorded instruments as stated in paragraph B(5) of Section 5301.252. Under Sec. 5301.252(C) the County Recorder shall receive and cause such affidavit to be recorded as deeds are recorded.

SIGNED AND ACKNOWLEDGED IN THE PRESENCE OF:

Douglas A. Norviel
DOUGLAS A. NORVIEL
Sonja McMillen
Sonja McMillen

Jeffrey I. Lee
Professional Surveyor No. 6359



ORIGINAL STAMP IN GREEN

STATE OF OHIO,
LOGAN COUNTY, SS:

BE IT REMEMBERED, that on this 6th day of October, 2000, before me, the subscriber, a Notary Public in and for said County and State, personally came the above named Jeffrey I. Lee the maker of the foregoing Affidavit, and acknowledged the signing of the same to be his voluntary act and deed, for the uses and purposes therein mentioned.

IN TESTIMONY WHEREOF, I have hereunto subscribed my name and affixed my official seal, on the day and year last aforesaid.

Sonja McMillen
Notary Public,

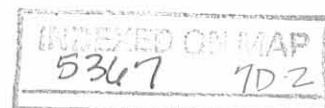
SONJA M^cMILLEN
Notary Public, State of Ohio
My Commission Expires April 17, 2005

RECORDER:

Please cross reference to Official Record Volume 401, Page 842 in the Abstract of the Deed Records of Logan County, Ohio.

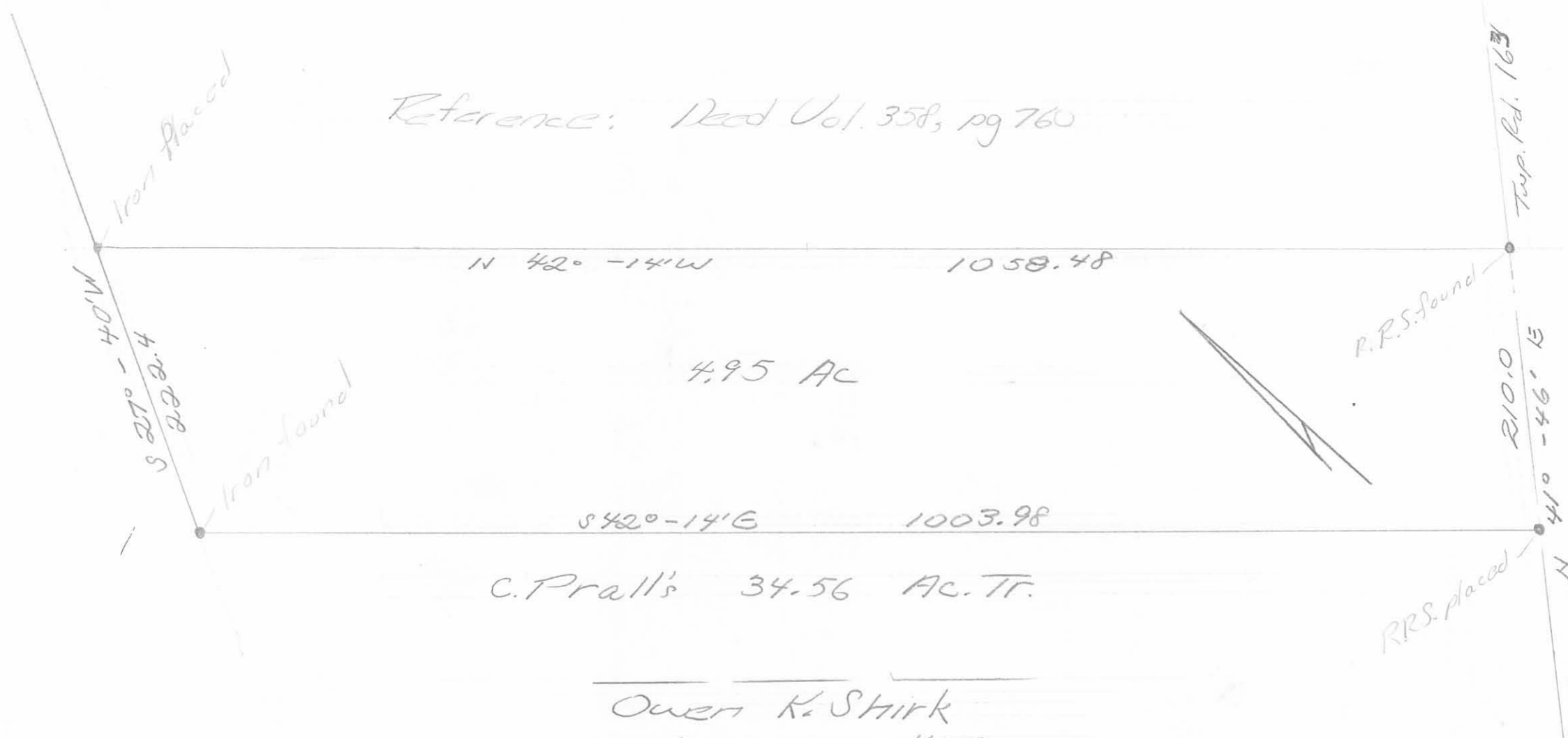
This instrument was prepared by Jeffrey I. Lee.

DESCRIPTION CHECKED
LOGAN CO. ENGINEER
BY Billy 10-16-00



R. NICHOLL SURVEY (from Deed Vol. 358; pg 760)
 MONROE TWP.; LOGAN CO., OHIO
 V.M.S. 4570 - 1" = 100'

Reference: Deed Vol. 358, pg 760

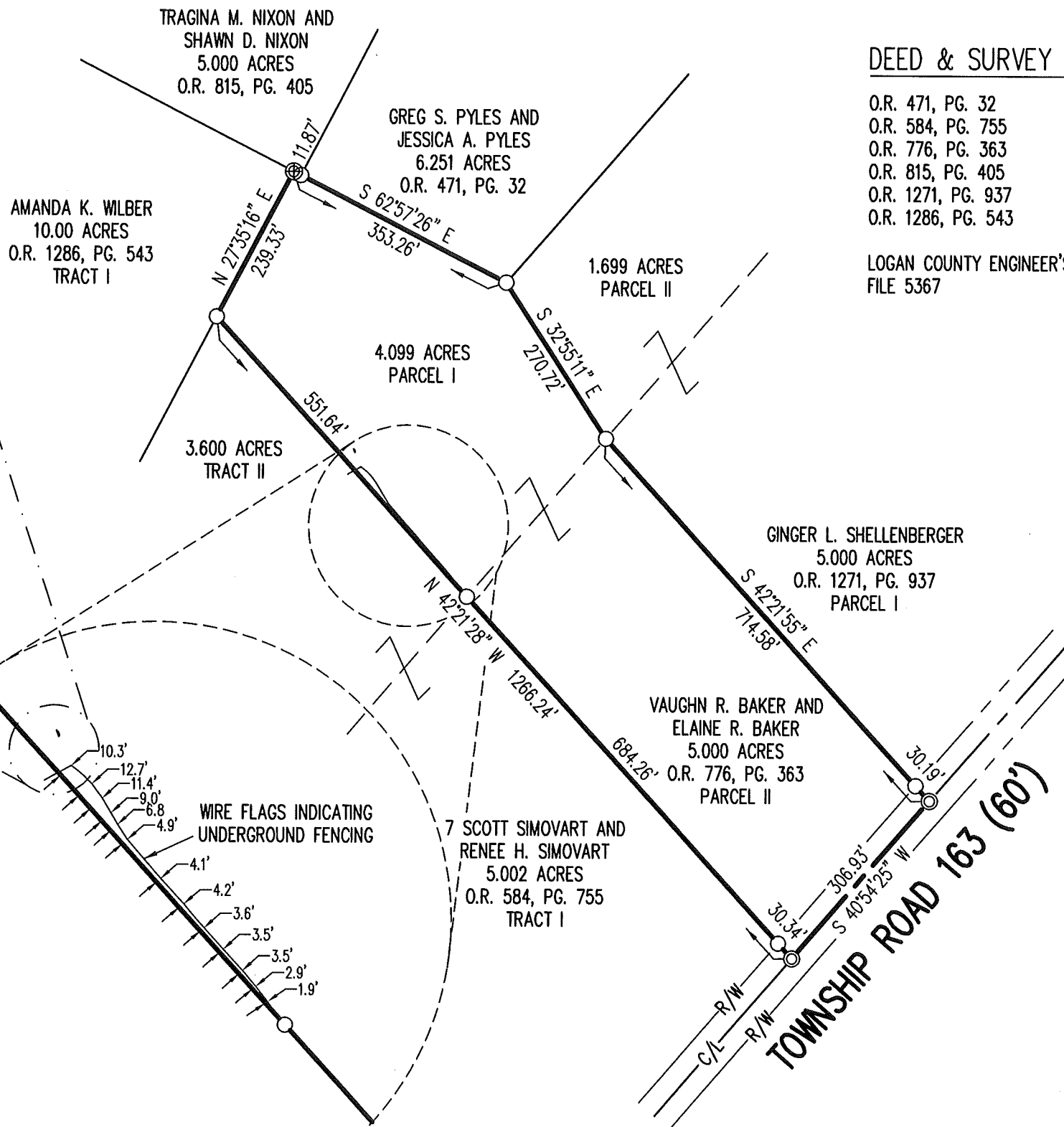
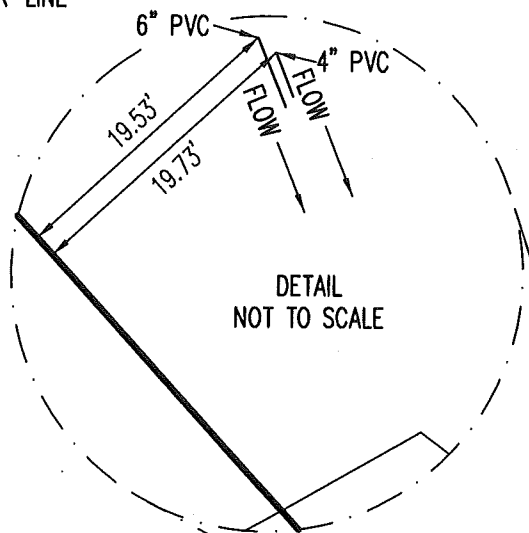


Owen K. Shirk
 Surveyor 4271
 March, 1976

INDEXED ON MAP
 5367 8P

LEGEND:

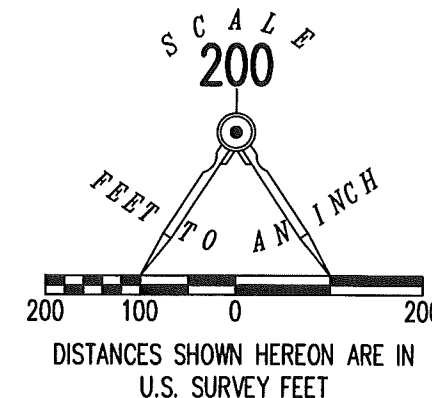
- ⊙ MAG NAIL FOUND
- ⊕ 3/4 INCH IRON ROD FOUND (BENT)
- 5/8 INCH IRON ROD FOUND WITH PLASTIC I.D. CAP STAMPED "LEE 6359"
- R/W = RIGHT-OF-WAY
- C/L = CENTER-LINE



DEED & SURVEY REFERENCES:

- O.R. 471, PG. 32
- O.R. 584, PG. 755
- O.R. 776, PG. 363
- O.R. 815, PG. 405
- O.R. 1271, PG. 937
- O.R. 1286, PG. 543

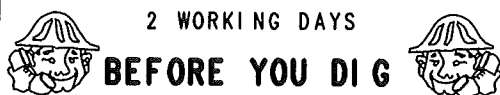
LOGAN COUNTY ENGINEER'S MAP ROOM
FILE 5367



BASIS FOR BEARINGS:

BEARINGS AND DISTANCES, SHOWN HEREON, ARE DERIVED FROM GPS OBSERVATIONS BASED ON GRID NORTH, OHIO STATE PLANE COORDINATE SYSTEM, NORTH ZONE, NAD83 (2011, EPOCH 2010), WITH THE CENTER-LINE OF TOWNSHIP ROAD 163 HAVING A BEARING OF S 40°-54'-25" W.

THIS SURVEY WAS PREPARED IN THE ABSENCE OF A COMPLETE AND ACCURATE TITLE SEARCH AND DOES NOT GUARANTEE TITLE.



CALL TOLL FREE **800-362-2764**

OHIO UTILITIES PROTECTION SERVICE

DETAIL NOT TO SCALE

**RETRACEMENT SURVEY OF THE
VAUGHN R. BAKER AND
ELAINE R. BAKER
4.099 ACRE AND 5.000 ACRE TRACTS
OFFICIAL RECORD 776, PAGE 363
PARCEL I AND PARCEL II
VIRGINIA MILITARY SURVEY 4570
MONROE TOWNSHIP
LOGAN COUNTY, OHIO**

SURVEYED BY:

DANIEL A. NEER
PROFESSIONAL SURVEYOR NO. 8533
DECEMBER 14, 2018

COPYRIGHT 2018 BY:
LEE SURVEYING & MAPPING CO.
117 North Madriver Street
BELLEFONTAINE, OHIO 43311
(937) 593-7335

WWW.LEE-SURVEYING.COM
surveys@lee-surveying.com

KSS D1218 26891218 L-2689-3

INDEXED ON MAP
5367