

Lee Surveying and Mapping Co.



Farm Surveys • Lot Surveys • Topography • Subdivisions • Construction Layout

855 EAST SANDUSKY AVENUE
BELLEFONTAINE, OHIO 43311

(513) 593-5780

CLAYTON M. LEE, P.S.
JEFFREY I. LEE, P.S.

C.A.U.V. SURVEY (WALTER ROPP)

TAX MAP 138, PARCELS 22 & 23
V.M.S 3226 & V.M.S. 3225
MONROE TOWNSHIP
LOGAN COUNTY, OHIO

COMMERCIAL AREA

Being out of that 130.05 acres in the name of Walter Ropp as deeded and described in Volume 199, Page 448 of the Logan County Records of Deeds and being more particularly described as follows:

Beginning at the center-line of County Highway 28 and the west line of V.M.S 3226. This point is the most northerly point of the Walter Ropp 1.48 acre tract (1.1 acre by deed).

THENCE, S 52°-45' E, a distance of 200 feet to a point.

THENCE, N 49°-30' E, a distance of 450 feet to a point.

THENCE, S 40°-45'-50" E, a distance of 502.3 feet to a point.

THENCE, N 39°-30' E, a distance of 130 feet to a point.

THENCE, S 64°-00' E, a distance of 400 feet to a point on the Ropp southerly property line.

THENCE, with the Ropp southerly property line, S 66°-30' W, a distance of 1100 feet to a point on the west line of V.M.S. 3226.

THENCE, with the west line of V.M.S. 3226 and the east line of the E.D. Johnson 16.66 acre tract and the east line of the aforesaid 1.48 acre tract N 20°-00' W, a distance of 770 feet to the point of beginning.

Containing 11.76 acres more or less.

ALSO, all of that 1.48 acre tract (1.1 acres by deed) in V.M.S. 3225 (Vol. 199, Pg. 448).

PREPARED FROM AERIAL PHOTO AND FIELD EXPLORATION BY:



Jeffrey I. Lee
Jeffrey I. Lee
Professional Surveyor No. 6359
August 13, 1987

L-1609

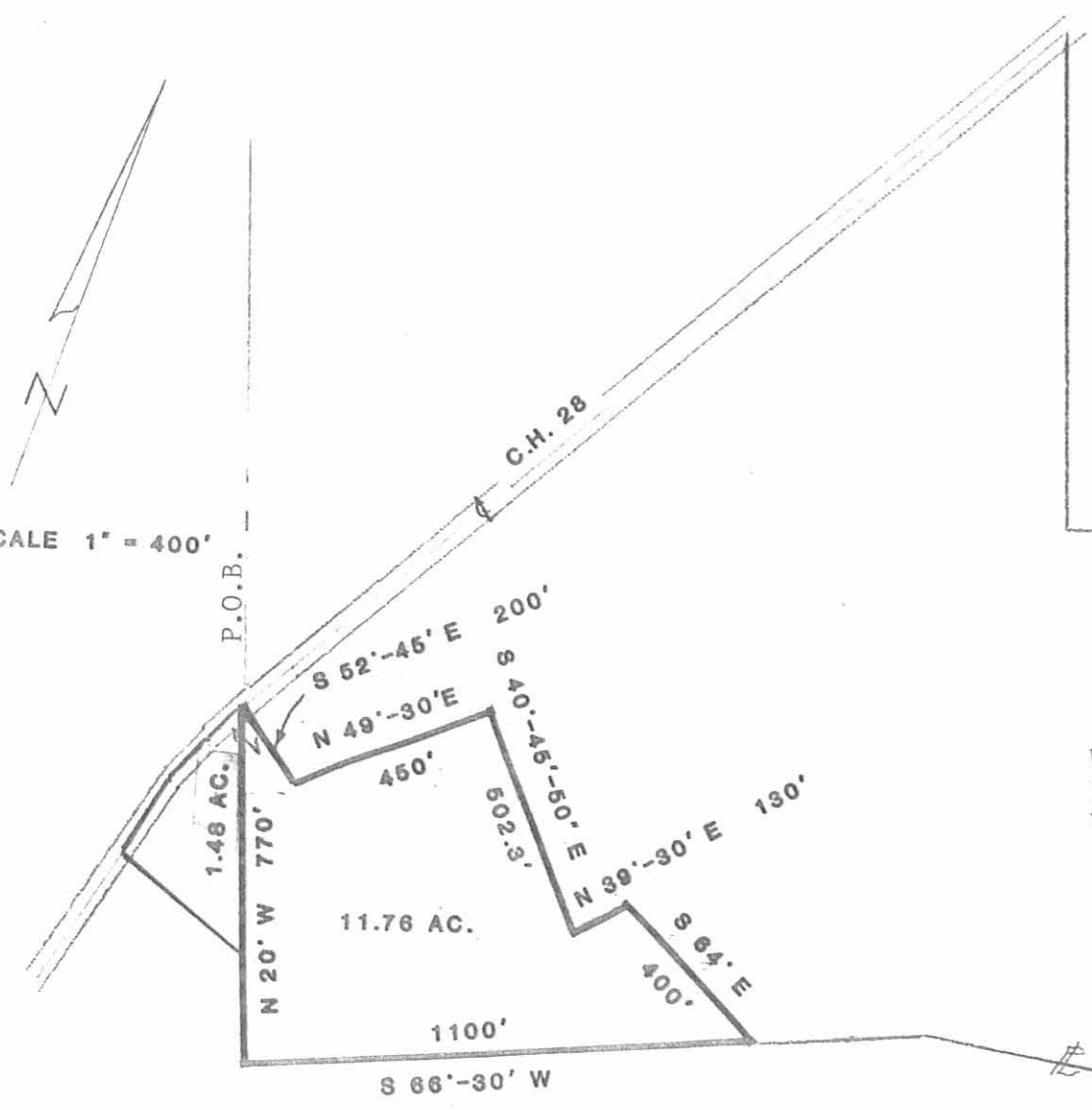
INDEXED ON MAP
7/11/87 JD

ORIGINAL STAMP IN GREEN

Do Not Transfer.
C.A.U.V. Survey Only



SCALE 1" = 400'



Grace Whitehead
79.75 Ac.
Vol. 16, Pg. 137

C.A.U.V. SURVEY OF
11.76 acres in the WALTER LAMB land
in V.M.S. 3226 and
all of the 1.48 acres (1.1 acres deed)
in V.M.S. 3225
Volume 199, Page 448
Monroe Township, Logan County, Ohio
Prepared from records & site visitation
By:

Jeffrey T. Lee
Jeffrey T. Lee
Professional Surveyor No. 6359
August 13, 1987



INDEXED ON MAP
7668 1P

Walter Ropp
130.05 Ac.
Vol. 199, Pg. 448

ORIGINAL STAMP IN GREEN

Lloyd Lockwood
132.96 Ac.
Vol. 241, Pg. 465

E.D. Johnson
16.66 Ac.
Vol. 11, Pg. 585

VMS 3226
VMS 3226

J. & C. Havens
37.399 Ac.
Vol. 1, Pg. 417

Basis for bearings V.M.S. line (N 20° W)

*Do Not Transfer
C.A.U.V. Survey Only*