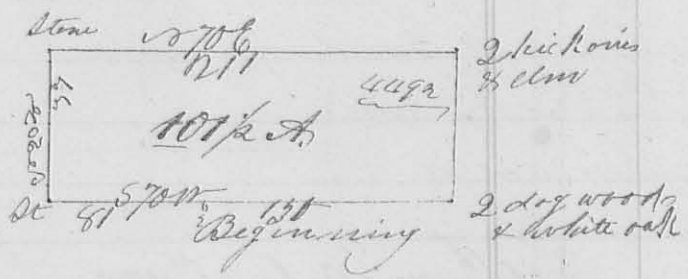


8235 11 Mo. 4th 1829 Survey No. 121
Surveyed 11 1/2 acres of land for Isaac Millett

Begining at a white and red oak stump north east corner to Thomas Stewarts land, thence S 70° N 81 poles to a stake, - thence N 20° W 77 poles to a stone corner to Moots and Stewart, - thence N 70° E 211 poles to 2 hickories and elm,

thence S 20° E 77 poles to 2 dogwood bushes white oak and stone thence S 70° W 130 poles to the be

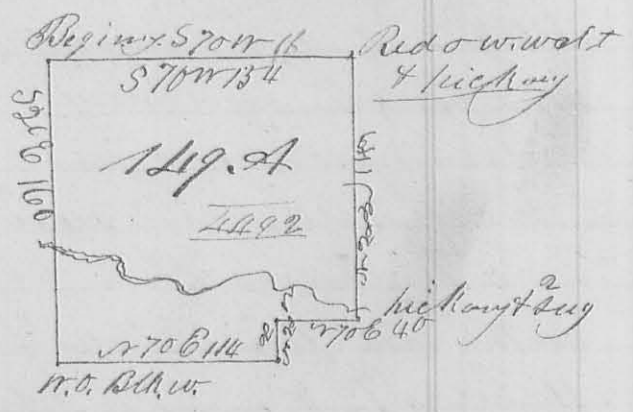


-gining - part of Jesse Davis's survey No. 4492 on the waters of Mad river
John Stewart }
Thomas Millett } C.S.L.C.
Ja. McHarmon C.S.L.C.

8235 11 Mo. 4th 1829 Survey No. 122

Surveyed 149 acres of land for John Stewart
Begining at a white oak and red oak stump N. E. corner of Thomas Stewarts land, thence with the east line of said Stewarts land S 20° E (cropping a branch at 94 poles) 160 poles to a white oak and black walnut in the north line of Euan's land - thence

with said line N 70° E 114 poles to a bar oak stump, corner South - ards land - thence N 20° W 20 poles to a hickory and red oak stump thence N 70° E 40 poles to a hick



-ory and 2 sugar trees thence N 20° W (cropping a branch at 17 poles) 140 poles to a red oak white walnut and hickory, - thence S 70° W 154 poles to the begining - being part of Jesse Davis's survey No. 4492

John Stewart }
Isaac Millett } C.S.L.C.
Ja. McHarmon C.S.L.C.

11th Nov 4th 1829

Survey No 123

8235

Surveyed 8 acres of land for John Stewart. - Beginning at a stake, near a bur oak stump, corner to John Lingrell's land thence N 20 W passing a hickory at 20 poles, 25 poles to a large white oak - thence S 70 W 51.2 poles to a stake
 thence S 20 E 25 poles to a stake -
 thence N 70 W 51.2 poles to the beginning being part of Jesse Davis's Survey or 11492
 Thomas and Isaac Willett's } 8 A white oak beginning
 James W. Garrison

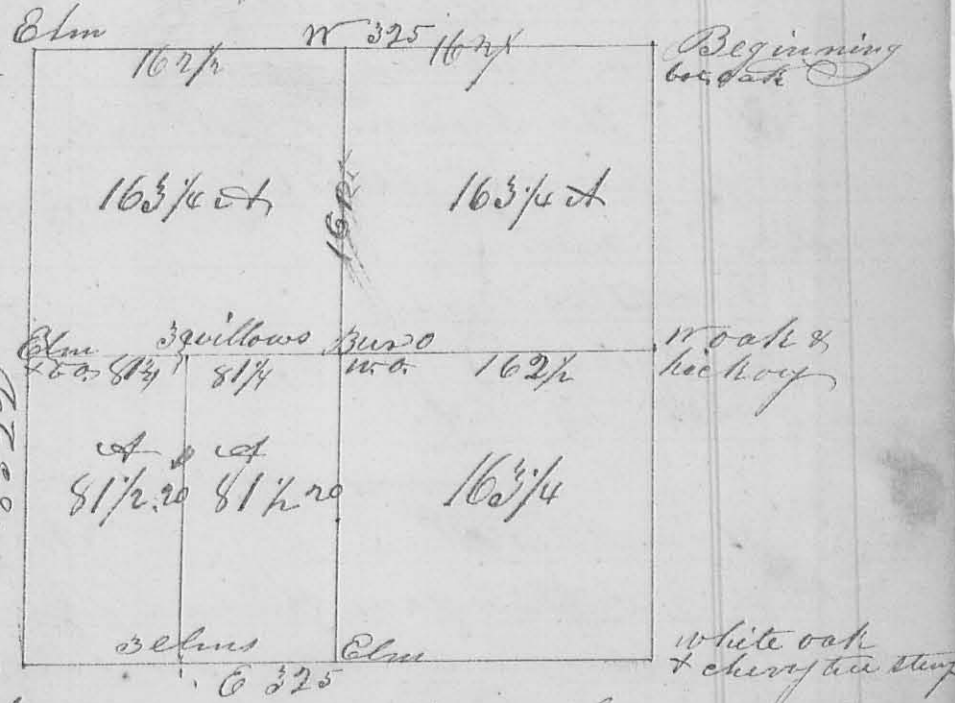
11th Nov 17th 1829

Survey No 124

8236

Surveyed for Robert Humphreys and others - Beginning at the N.E. corner of section 1 of Town 2 Range 11 W. original corner a bur oak standing 18 in. diam. S 38 E 1/2 miles distant thence west 325 poles to the N.W. corner of said sec. found roots in the place of the original corner trees, and marked an elm sucker. thence south 322 poles to the south west corner of the sec. a white oak 18 in. diam. S 78 W 75 L. dist thence east 325 poles to the S.E. corner a white oak 12 inch diam. east 6 L. a cherry tree stump west 8 L. dist.

1st Division line begins at a point in the west line 161 poles from each corner an elm and bur oak standing together north 11 L. thence East crossed a bur at 4 poles, 8 1/2 poles marked 3 small willows on the W. side



east bank of buckanjahala, 162 1/2 poles to the centre of the sec. a bur oak 15 in. diam. S 31 E 15 L. a white oak 16 in. diam west 35 L., 325 poles to the east line of the section