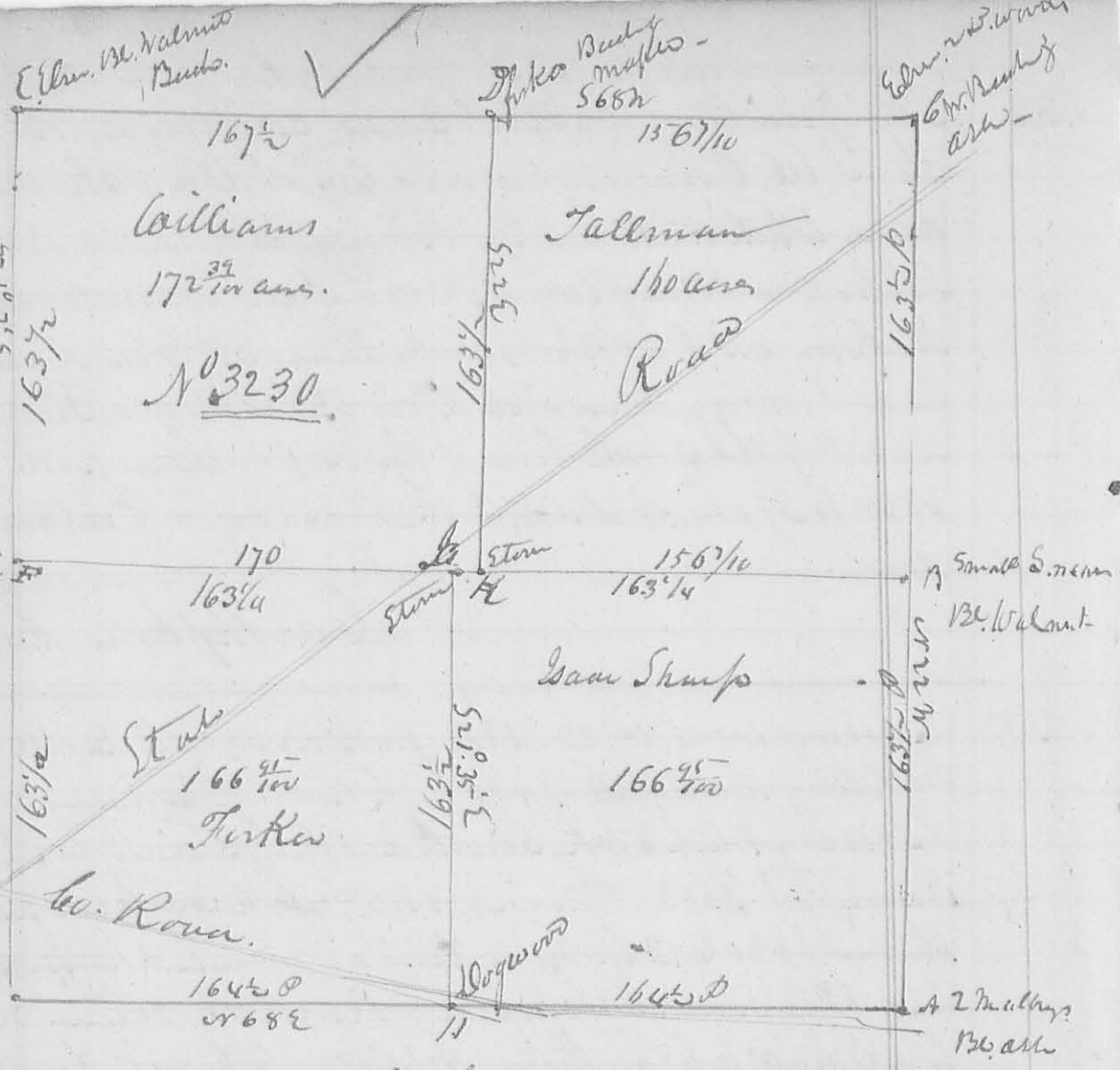


278

A. J. Smith.

no. 8419
399



Surveyed Dec 22. 1837 for Isaac Shump & others.

Bruce Blair.
Surveyor Shump & Co. Com.

Dan Hopkins Com. S.W. L. 60

N. 400

8419

Surveyed Dec. 30. 1837 for Joseph Dickin part of Military Survey N. 322 was follow. Beginning at the S. E. C. of John Robt. p. at 2 1/2 poles of poplar. thence in South N. 40 in then North 48 1/2 pole, crossing a branch at 4 1/2 poles to Beech & poplar thence East 7 1/2 pole, crossing branch at 3 1/4 to a Hickory, 3 1/2 pole, Ash thence South 48 1/2 pole to Hickory, Ironwood & Ash thence West 7 1/2 pole, crossing a run at 4 poles to the beginning Cont. 9. 22 Ams. also

Survey for John Robt. Beginning in Joseph Dickin's west line corner between John Robt. & Cook thence South 8 poles, crossing a branch at 8 poles to a stake in a swamp, thence East 16 1/2 pole to a stake in a run a Hickory, 1 pole all Ash thence down said run with 1/2

its Meander to a White Elm, Water Beeds & Sugar. 279
 the Sugar on the Eastern bank of the Creek, thence North
 105° to pole to a Lyrus Ironwood & Sugar in the N. Line of said
 John Robt land, thence East with said line 22 pole,
 crossing a branch at 18 pole to the beginning. Cont^d 9.15 acs.
 Dan Hopkins Co. Sur. S. C.

N^o 401

Surveyed Jan^y 25. 1838 for Richard Clarkson Survey N^o 9913
 as follows. Beginning at a Stone S.W. c to said Survey, the
 Corner tree 3 beeches, all down and decayed, thence N 78° E 95 pole
 to Lyrus of Beech (Beech down) thence N 11° W 169 pole to 2 small
 Beeches & Ironwood, in N. Line of said lot thence S 78° W 95 pole
 to a Black Ironwood & Beech tree thence S 11° E 170 pole to
 the beginning. Containing 100⁷/₁₀₀ acs.
 Lyles Hill Dan Hopkins Co. Sur. S. C.

N^o 402 Surveyed Jun^y 1838 for Saml Carter and Jacob Sey-
 den the S. E. quarter of 58.53 R. 14 m. 0. 0. as follows. Be-
 ginning at the N. E. Corner of said quarter at a Stake
 agreed upon by the parties for said corner, thence N 89° W
 40 ch & 4 Links to a White Oak 20 L. D. N 85° E 26 Links
 130. Oak 18 L. D. S 37° W 59 Links, thence S 3/4° W 41 chain to
 a Stone quarter corner between S. 8. Originated bearing true
 down - thence with the South line of the Section S 89° E 40 ch
 13 Links to a Stone agreed upon for corner to said quarter thence
 N 13° E 41 ch to the beginning - thence divides the same
 by a line commencing on the center of the South line of the
 quarter at a 130. Oak 24 L. D. corner tree - thence N 14° E
 41 chain to a Stake center of the N. Line of the quarter S.
 in a Prairie. Containing 82⁹⁸/₁₀₀ acs. in each Lot or half ac.
 Dan Hopkins Co. Sur. S. C.