

REC'D 11-16-05 8M/OK

Lee Surveying and Mapping Co., Inc.

Land Surveys • Topography • Subdivisions • Construction Layout

117 N. Madriver St.
Bellefontaine OH 43311



Phone: (937) 593-7335
Fax: (937) 593-7444

1975-2005 - 30 YEARS OF EXCELLENCE

**HILLIARD
TRACT A
0.970 ACRE**

Lying in Fractional Section 19, Town 4, Range 14, Monroe Township, Logan County, Ohio.

Being out of the Rick Hilliard 23.710 acre tract as deeded and described in Official Record 564, Page 773 of the Logan County Records of Deeds and being more particularly described as follows:

Beginning at a 1/2 inch iron rod found on the east line of Fractional Section 19, west line of Virginia Military Survey 5864 and on the intersection of center-lines of Township Road 199 and County Highway 1 (Ludlow Road).

THENCE, with the center-line of Township Road 199 (30 feet wide), S 87°-52'-06"W, a distance of 330.70 feet to a MAG nail set at the TRUE POINT OF BEGINNING.

THENCE, S 1°-47'-54"E, a distance of 281.67 feet to a 5/8 iron rod set, passing a 5/8 inch iron rod set at 15.00 feet.

THENCE, S 87°-52'-06"W, a distance of 150.00 feet to a 5/8 inch iron rod set on the west line of Fractional Section 19, the east line of Section 25, the west line of Monroe Township, the east line of Liberty Township.

THENCE, with the west line of Fractional Section 19, the east line of Section 25, the west line of Monroe Township, the east line of Liberty Township and the east line of the Tim Yoder original 22.19 acre tract (O.R. 222, Pg. 264), N 1°-47'-54"W, a distance of 281.67 feet to a MAG nail set on the center-line of Township Road 199, passing a 5/8 inch iron rod set at 266.67 feet.

THENCE, with the center-line of Township Road 199, N 87°-52'-06"E, a distance of 150.00 feet to the point of beginning.

Containing 0.970 acre, of which 0.052 acre is within the highway right-of-way.

The basis for bearings is the east line of Fractional Section 19, being S 21°-00'-00"E, and all other bearings are from angles and distances measured in a field survey by Lee Surveying and Mapping Co., Inc. on November 14, 2005.



ORIGINAL STAMP IN GREEN

Description prepared by:

[Signature]
Jeffrey I. Lee
Professional Surveyor 6359
November 14, 2005

INDEXED ON MAP
95251D-1

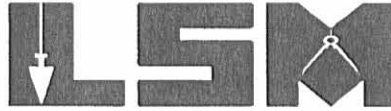
L-4149

REV'D 11-14-05 SMY/OK

Lee Surveying and Mapping Co., Inc.

Land Surveys • Topography • Subdivisions • Construction Layout

117 N. Madriver St.
Bellefontaine OH 43311



Phone: (937) 593-7335
Fax: (937) 593-7444

1975-2005 - 30 YEARS OF EXCELLENCE

**HILLIARD
TRACT B
0.970 ACRE**

Lying in Fractional Section 19, Town 4, Range 14, Monroe Township, Logan County, Ohio.

Being out of the Rick Hilliard 23.710 acre tract as deeded and described in Official Record 564, Page 773 of the Logan County Records of Deeds and being more particularly described as follows:

Beginning at a 1/2 inch iron rod found on the east line of Fractional Section 19, west line of Virginia Military Survey 5864 and on the intersection of center-lines of Township Road 199 and County Highway 1 (Ludlow Road).

THENCE, with the center-line of Township Road 199 (30 feet wide), S 87°-52'-06"W, a distance of 180.70 feet to a MAG nail set at the TRUE POINT OF BEGINNING.

THENCE, S 1°-47'-54"E, a distance of 281.67 feet to a 5/8 iron rod set, passing a 5/8 inch iron rod set at 15.00 feet.

THENCE, S 87°-52'-06"W, a distance of 150.00 feet to a 5/8 inch iron rod set, passing a 5/8 inch iron rod set at 35.10 feet.

THENCE, N 1°-47'-54"W, a distance of 281.67 feet to a MAG nail set on the center-line of Township Road 199, passing a 5/8 inch iron rod set at 266.67 feet.

THENCE, with the center-line of Township Road 199, N 87°-52'-06"E, a distance of 150.00 feet to the point of beginning.

Containing 0.970 acre, of which 0.052 acre is within the highway right-of-way.

The basis for bearings is the east line of Fractional Section 19, being S 21°-00'-00"E, and all other bearings are from angles and distances measured in a field survey by Lee Surveying and Mapping Co., Inc. on November 14, 2005.



ORIGINAL STAMP IN GREEN

Description prepared by:

[Signature]
Jeffrey I. Lee
Professional Surveyor 6359
November 14, 2005

L-4149

INDEXED ON MAP
9525 ID-2

REC'D 11-16-05 SMM OK

Lee Surveying and Mapping Co., Inc.

Land Surveys • Topography • Subdivisions • Construction Layout

117 N. Madriver St.
Bellefontaine OH 43311



Phone: (937) 593-7335
Fax: (937) 593-7444

1975-2005 - 30 YEARS OF EXCELLENCE

**HILLIARD
1.485 ACRES**

Lying in Fractional Section 19, Town 4, Range 14, Monroe Township, Logan County, Ohio.

Being out of the Rick Hilliard 23.710 acre tract as deeded and described in Official Record 564, Page 773 of the Logan County Records of Deeds and being more particularly described as follows:

Beginning at a 1/2 inch iron rod found on the east line of Fractional Section 19, west line of Virginia Military Survey 5864 and on the intersection of center-lines of Township Road 199 and County Highway 1 (Ludlow Road).

THENCE, with the east line of Fractional Section 19, west line of Virginia Military Survey 5864 and center-line of County Highway 1 (60 feet wide), S 21°-00'-00"E, a distance of 297.66 feet to a MAG nail set.

THENCE, S 87°-52'-06"W, a distance of 278.60 feet to a 5/8 inch iron rod set, passing a 5/8 inch iron rod set at 31.70 feet.

THENCE, N 1°-47'-54"W, a distance of 281.67 feet to a MAG nail set on the center-line of Township Road 199, passing a 5/8 inch iron rod set at 266.67 feet.

THENCE, with the center-line of Township Road 199 (30 feet wide), N 87°-52'-06"E, a distance of 180.70 feet to the point of beginning.

Containing 1.485 acres, of which 0.257 acre is within the highway rights-of-way.

The basis for bearings is the east line of Fractional Section 19, being S 21°-00'-00"E, and all other bearings are from angles and distances measured in a field survey by Lee Surveying and Mapping Co., Inc. on November 14, 2005.



ORIGINAL STAMP IN GREEN

Description prepared by:

(Signature)
Jeffrey I. Lee
Professional Surveyor 6359
November 14, 2005

L-4149

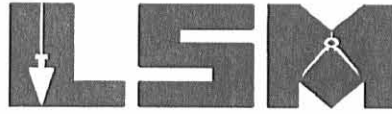
INDEXED ON MAP
95251D-3

REC'D 11-16-05 SMY OK

Lee Surveying and Mapping Co., Inc.

Land Surveys • Topography • Subdivisions • Construction Layout

117 N. Madriver St.
Bellefontaine OH 43311



Phone: (937) 593-7335
Fax: (937) 593-7444

1975-2005 - 30 YEARS OF EXCELLENCE

**HILLIARD
1.022 ACRES**

Lying in Fractional Section 19, Town 4, Range 14, Monroe Township, Logan County, Ohio.

Being out of the Rick Hilliard 23.710 acre tract as deeded and described in Official Record 564, Page 773 of the Logan County Records of Deeds and being more particularly described as follows:

Beginning at a 1/2 inch iron rod found on the east line of Fractional Section 19, west line of Virginia Military Survey 5864 and on the intersection of center-lines of Township Road 199 and County Highway 1 (Ludlow Road).

THENCE, with the east line of Fractional Section 19, west line of Virginia Military Survey 5864 and center-line of County Highway 1 (60 feet wide), S 21°-00'-00"E, a distance of 297.66 feet to a MAG nail set at the TRUE POINT OF BEGINNING.

THENCE, with the east line of Fractional Section 19, west line of Virginia Military Survey 5864 and center-line of County Highway 1, S 21°-00'-00"E, a distance of 150.00 feet to a MAG nail set.

THENCE, S 87°-52'-06"W, a distance of 313.70 feet to a 5/8 iron rod set, passing a 5/8 inch iron rod set at 31.70 feet.

THENCE, N 21°-00'-00"W, a distance of 150.00 feet to a 5/8 inch iron rod set.

THENCE, N 87°-52'-06"E, a distance of 313.70 feet to the point of beginning, passing 5/8 inch iron rods set at 35.10 feet and 282.00 feet.

Containing 1.022 acres, of which 0.103 acre is within the highway right-of-way.

The basis for bearings is the east line of Fractional Section 19, being S 21°-00'-00"E, and all other bearings are from angles and distances measured in a field survey by Lee Surveying and Mapping Co., Inc. on November 14, 2005.



ORIGINAL STAMP IN GREEN

Description prepared by:

Jeffrey I. Lee
Jeffrey I. Lee
Professional Surveyor 6359
November 14, 2005

L-4149

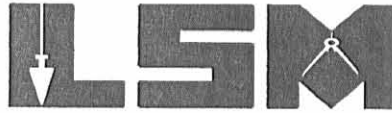
INDEXED ON MAP
95251D4

REV ID 11-16-05 SWM OK

Lee Surveying and Mapping Co., Inc.

Land Surveys • Topography • Subdivisions • Construction Layout

117 N. Madriver St.
Bellefontaine OH 43311



Phone: (937) 593-7335
Fax: (937) 593-7444

1975-2005 - 30 YEARS OF EXCELLENCE

**HILLIARD
1.330 ACRES**

Lying in Fractional Section 19, Town 4, Range 14, Monroe Township, Logan County, Ohio.

Being out of the Rick Hilliard 23.710 acre tract as deeded and described in Official Record 564, Page 773 of the Logan County Records of Deeds and being more particularly described as follows:

Beginning at a 1/2 inch iron rod found on the east line of Fractional Section 19, west line of Virginia Military Survey 5864 and on the intersection of center-lines of Township Road 199 and County Highway 1 (Ludlow Road).

THENCE, with the east line of Fractional Section 19, west line of Virginia Military Survey 5864 and center-line of County Highway 1 (60 feet wide), S 21°-00'-00"E, a distance of 447.66 feet to a MAG nail set at the TRUE POINT OF BEGINNING.

THENCE, with the east line of Fractional Section 19, west line of Virginia Military Survey 5864 and center-line of County Highway 1, S 21°-00'-00"E, a distance of 165.27 feet to a MAG nail set.

THENCE, S 77°-00'-00"W, a distance of 299.76 feet to a 5/8 inch iron rod set, passing a 5/8 inch iron rod set at 30.29 feet.

THENCE, N 21°-00'-00"W, a distance of 225.00 feet to a 5/8 inch iron rod set.

THENCE, N 87°-52'-06"E, a distance of 313.70 feet to the point of beginning, passing 5/8 inch iron rod set at 282.00 feet.

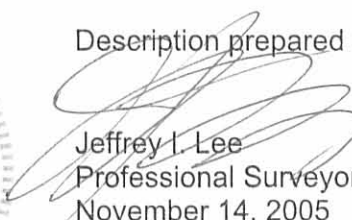
Containing 1.330 acres, of which 0.116 acre is within the highway right-of-way.

The basis for bearings is the east line of Fractional Section 19, being S 21°-00'-00"E, and all other bearings are from angles and distances measured in a field survey by Lee Surveying and Mapping Co., Inc. on November 14, 2005.



ORIGINAL STAMP IN GREEN

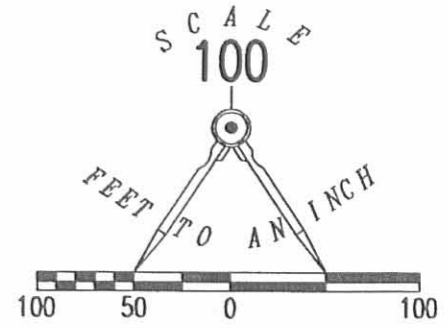
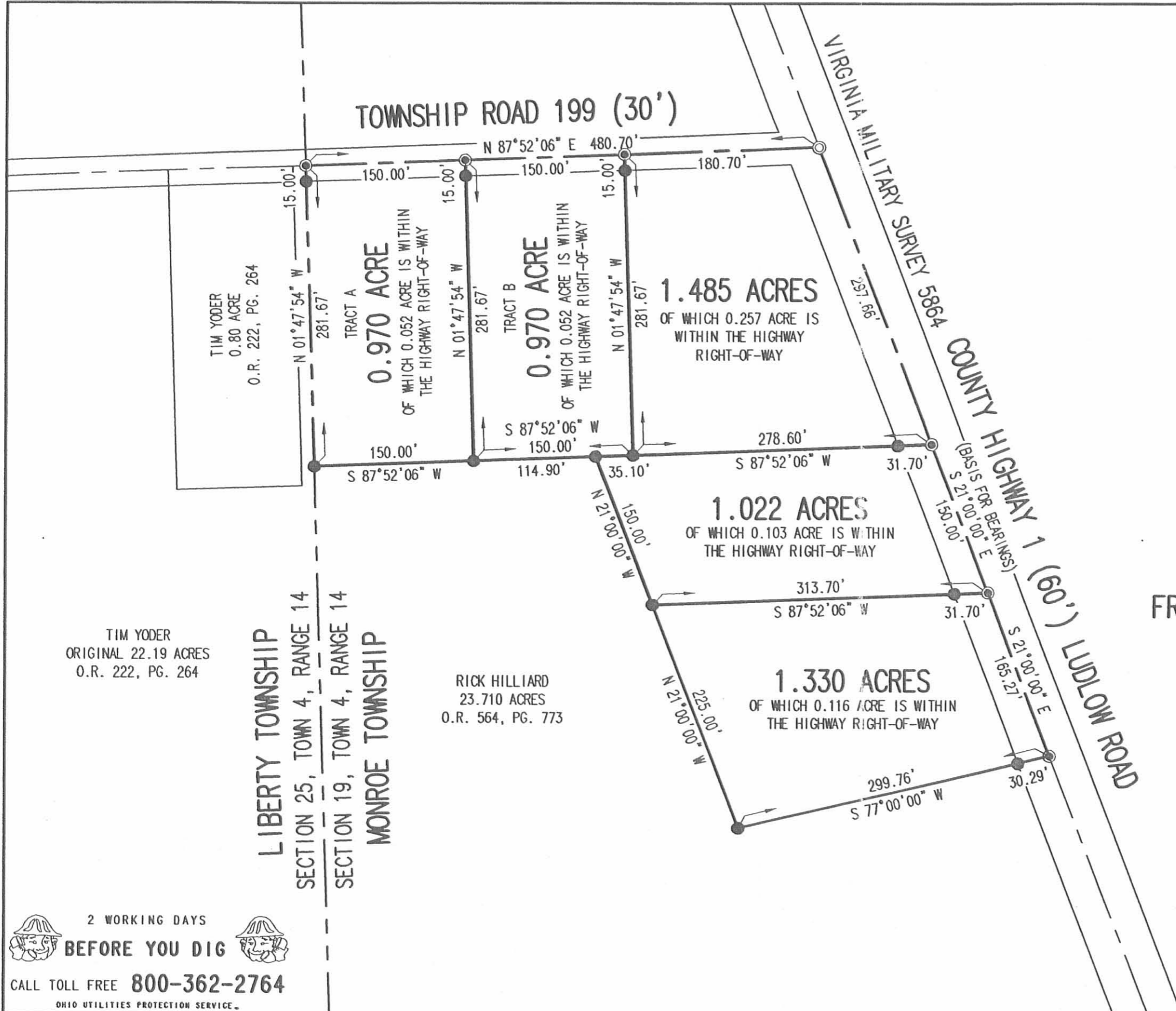
Description prepared by:


Jeffrey I. Lee
Professional Surveyor 6359
November 14, 2005

L-4149

INDEXED ON MAP
95251D-5

REC'D 11-16-05 SMY OK



- LEGEND:**
- ⊙ 1/2 INCH IRON ROD FOUND
 - MAG NAIL SET
 - 5/8 INCH IRON ROD SET

SURVEY OF FIVE TRACTS OUT OF THE RICK HILLIARD 23.710 ACRE TRACT OFFICIAL RECORD 564, PAGE 773 FRACTIONAL SECTION 19, TOWN 4, RANGE 14 MONROE TOWNSHIP LOGAN COUNTY, OHIO

SURVEYED BY:

Jeffrey I. Lee
JEFFREY I. LEE
 PROFESSIONAL SURVEYOR 6359
 NOVEMBER 14, 2005



ORIGINAL STAMP IN GREEN

COPYRIGHT 2005 BY:
LEE SURVEYING & MAPPING CO., INC.
 117 North Madriver Street
 BELLEFONTAINE, OHIO 43311
 (937) 593-7335
 KSR D1105 4149105A 4149105.ASC L-4149-3

2 WORKING DAYS BEFORE YOU DIG
 CALL TOLL FREE **800-362-2764**
 OHIO UTILITIES PROTECTION SERVICE

INDEXED ON MAP
 9525 1P

1 RECD 11-16-05 SMM OK

Lee Surveying and Mapping Co., Inc.

Land Surveys • Topography • Subdivisions • Construction Layout

117 N. Madriver St.
Bellefontaine OH 43311



Phone: (937) 593-7335
Fax: (937) 593-7444

1975-2005 - 30 YEARS OF EXCELLENCE

**HILLIARD
24.355 ACRES**

Lying in Fractional Section 19, Town 4, Range 14, Monroe Township, Logan County, Ohio.

Being all of the Rick Hilliard 23.710 acre tract as deeded and described in Official Record 564, Page 773 of the Logan County Records of Deeds and being more particularly described as follows:

Beginning at a 1/2 inch iron rod found on the east line of Fractional Section 19, west line of Virginia Military Survey 5864 and on the intersection of center-lines of Township Road 199 and County Highway 1 (Ludlow Road).

THENCE, with the east line of Fractional Section 19, west line of Virginia Military Survey 5864 and the center-line of County Highway 1 (60 feet wide), the following two courses:

S 21°-00'-00"E, a distance of 1474.11 feet to a 5/8 inch iron rod found.

S 20°-42'-19"E, a distance of 54.00 feet to a MAG nail set.

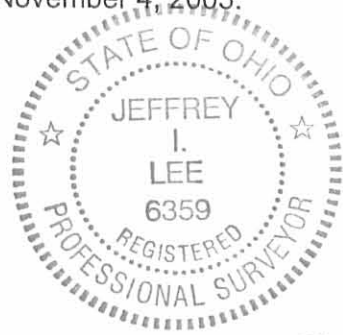
THENCE, with the north line of the Janet M. Neal 38.00 acre tract (O.R. 534, Pg. 823, Tract I), S 87°-35'-24"W, a distance of 983.08 feet to a stone found on the west line of Fractional Section 19, the east line of Section 25, the west line of Monroe Township and the east line of Liberty Township, passing a 5/8 inch iron rod set at 31.60 feet.

THENCE, with the west line of Fractional Section 19, the east line of Section 25, the west line of Monroe Township, the east line of Liberty Township and the east line of the Tim Yoder original 22.19 acre tract (O.R. 222, Pg. 264), N 1°-47'-54"W, a distance of 1450.89 feet to a MAG nail set on the center-line of Township Road 199, passing a 5/8 inch iron rod set at 1435.89 feet.

THENCE, with the center-line of Township Road 199 (30 feet wide), N 87°-52'-06"E, a distance of 480.70 feet to the point of beginning.

Containing 24.355 acres, of which 1.208 acres are within the highway rights-of-way.

The basis for bearings is the east line of Fractional Section 19, being S 21°-00'-00"E, and all other bearings are from angles and distances measured in a field survey by Lee Surveying and Mapping Co., Inc. on November 4, 2005.



ORIGINAL STAMP IN GREEN

Description prepared by:

A handwritten signature in black ink, appearing to read 'Jeffrey I. Lee'.
Jeffrey I. Lee
Professional Surveyor 6359
November 4, 2005
Revised November 15, 2005

L-4149

INDEXED ON MAY
9 5 25 20

REC'D 11-16-05 SMM OK

TOWNSHIP ROAD 199 (30')

TIM YODER
0.80 ACRE
O.R. 222, PG. 264

TIM YODER
ORIGINAL 22.19 ACRES
O.R. 222, PG. 264

LIBERTY TOWNSHIP
MONROE TOWNSHIP
SECTION 25, TOWN 4, RANGE 14
SECTION 19, TOWN 4, RANGE 14

24.355 ACRES
OF WHICH 1.208 ACRES ARE WITHIN
THE HIGHWAY RIGHT-OF-WAY

RICK HILLIARD
23.710 ACRES
O.R. 564, PG. 773

JANET M. NEAL
38.00 ACRES
O.R. 534, PG. 823, TRACT I

2 WORKING DAYS
BEFORE YOU DIG
CALL TOLL FREE **800-362-2764**
OHIO UTILITIES PROTECTION SERVICE

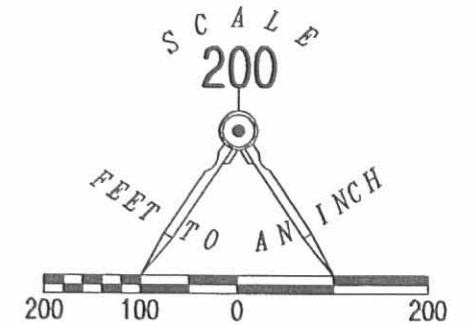
CARL McCLURE, JR., TRUSTEE
184.143 ACRES
O.R. 287, PG. 119

VIRGINIA MILITARY SURVEY 5864

COUNTY HIGHWAY 1 (60')
LUDLOW ROAD
(BASIS FOR BEARINGS)
S 21°00'00" E
1474.11'

LEGEND:

- ⊙ 1/2 INCH IRON ROD FOUND
- 5/8 INCH IRON ROD FOUND
- ⊙ MAG NAIL SET
- 5/8 INCH IRON ROD SET
- ⊠ STONE FOUND



RETRACEMENT SURVEY OF THE
RICK HILLIARD
23.710 ACRE TRACT
OFFICIAL RECORD 564, PAGE 773
FRACTIONAL SECTION 19, TOWN 4, RANGE 14
MONROE TOWNSHIP
LOGAN COUNTY, OHIO

SURVEYED BY:



JEFFREY I. LEE
PROFESSIONAL SURVEYOR 6359
NOVEMBER 4, 2005
REVISED NOVEMBER 15, 2005

COPYRIGHT 2005 BY:
LEE SURVEYING & MAPPING CO., INC.
117 North Madriver Street
BELLEFONTAINE, OHIO 43311
(937) 593-7335
D1105 4149105 L-4149-3

INDEXED ON MAP
95251P

ORIGINAL STAMP IN GREEN KSR