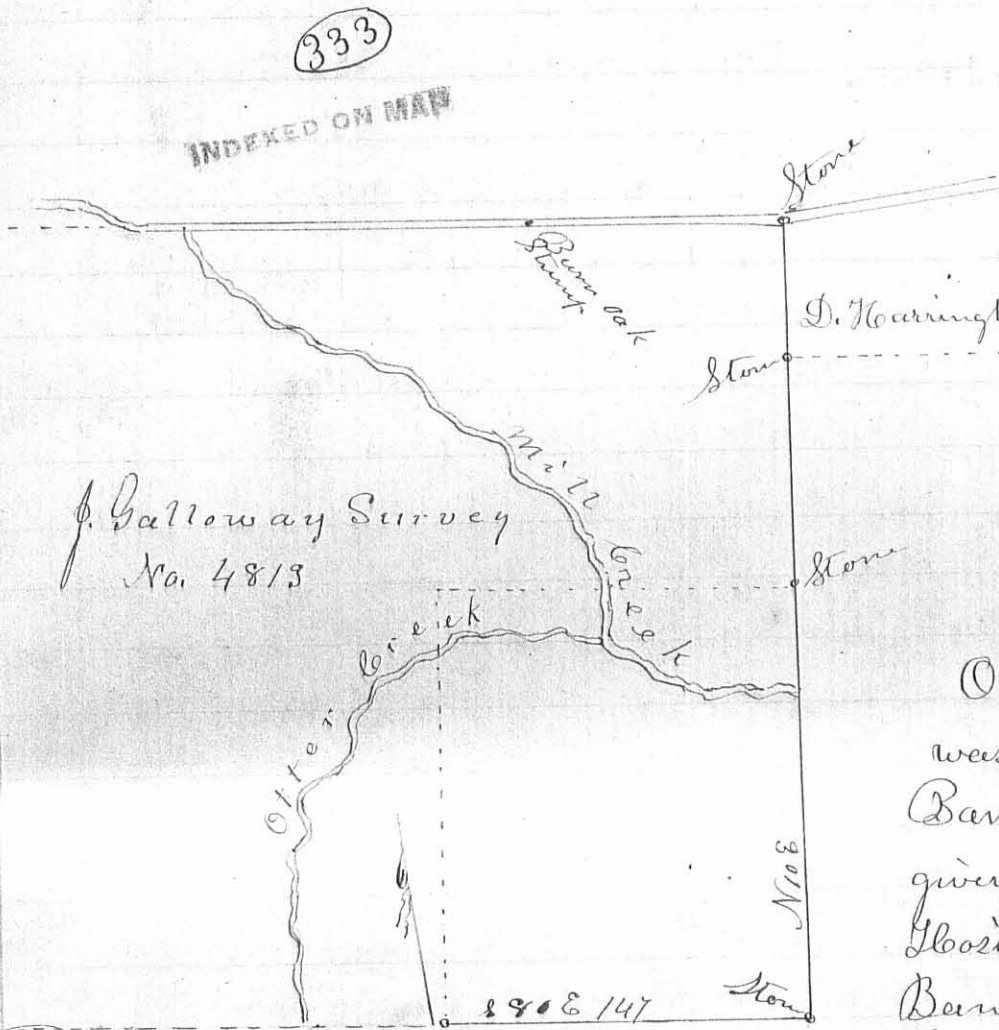


The aforesaid survey was made and the said depositions taken in presence of Luther Smith, William Lyle, William Huntap, Valentine Huntap, Abram Elliot, Jonathan Thomas, Joseph Elliot, & Mrs L. Smith and others, and an opportunity was given to all present to ask deponents questions

J. Huncan McLaughlin & Surveyor.

C. B. Miller }  
 P. A. Rodgers } C. C.  
 Alfred McAtee marker.



Survey No. 883

Surveyors office Bellefontaine  
 July 15th 1872

The annexed plat correctly represents O.M.S. No. 4813 Logan Co. O. part of which was surveyed by me at the request of Washington Banks June 3rd and 4th 1872, who had given 20 days notice to David Harrington, David Hozick, Robert Dickinson, John Outland and Banks heirs, Const. Simeon Wallace serving the notice, to wit:

By J. P. P.

Beginning at a stone in the South line of said Survey, and S.W. corner to Banks lands; running with said line 800 & 147 rods to the South East corner of said Survey, placing a stone to mark said corner, an ash stump one of original witnesses to said corner bearing S 42° W 4 feet distant; Thence N 10° E 201 rods to N.E. corner of Banks land, crossing Mill Creek at 153 rods, and placing a stone from which a white oak tree 30 in. diam. bears N 35° W 34 1/2 feet; Thence same course 93 1/2 rods to N.W. corner of David Hozick's land, and S.W. corner of David Harrington's land, placing a stone; Thence same course 58 1/2 rods to the N.E. corner of said Survey which calls for two Buckeyes, an ash, and a sugar, all of which are gone, placing a stone in the angle of the road, being guided by intersecting lines, and side distances.

The following persons were present when the aforesaid lines were run and corner stones placed, viz. Robert Dickinson, David Hozick, David Harrington Atwell Grubb, Washington Banks and others, Variation of Compass from Original Survey three degrees. The distance from the Burr Oak Stump in the north line of said Survey to the N.E. corner of the same, is one hundred and seven (107) rods.

MAAM McCormick  
 Surveyor Logan Co. O.

Patrick Flach }  
 Simeon Wallace } C. C.