

10' Metal

Road #129 Perry Twp.

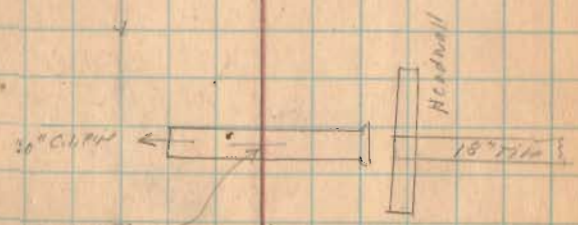
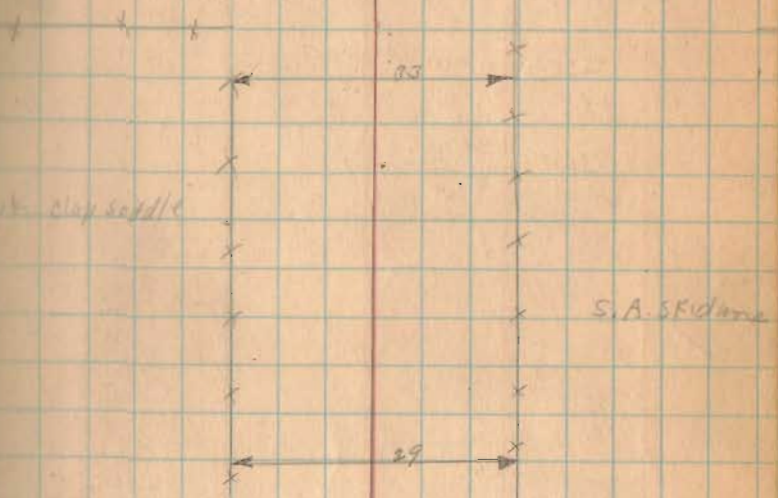
see Baker survey # 974
Drawer R.

1322
INDEXED ON MAP

Sept. 25, 1927
Clear - Fine Day 12

Harry V. Wedding

Wright
McKirshen
Rothman
Wickersham
store



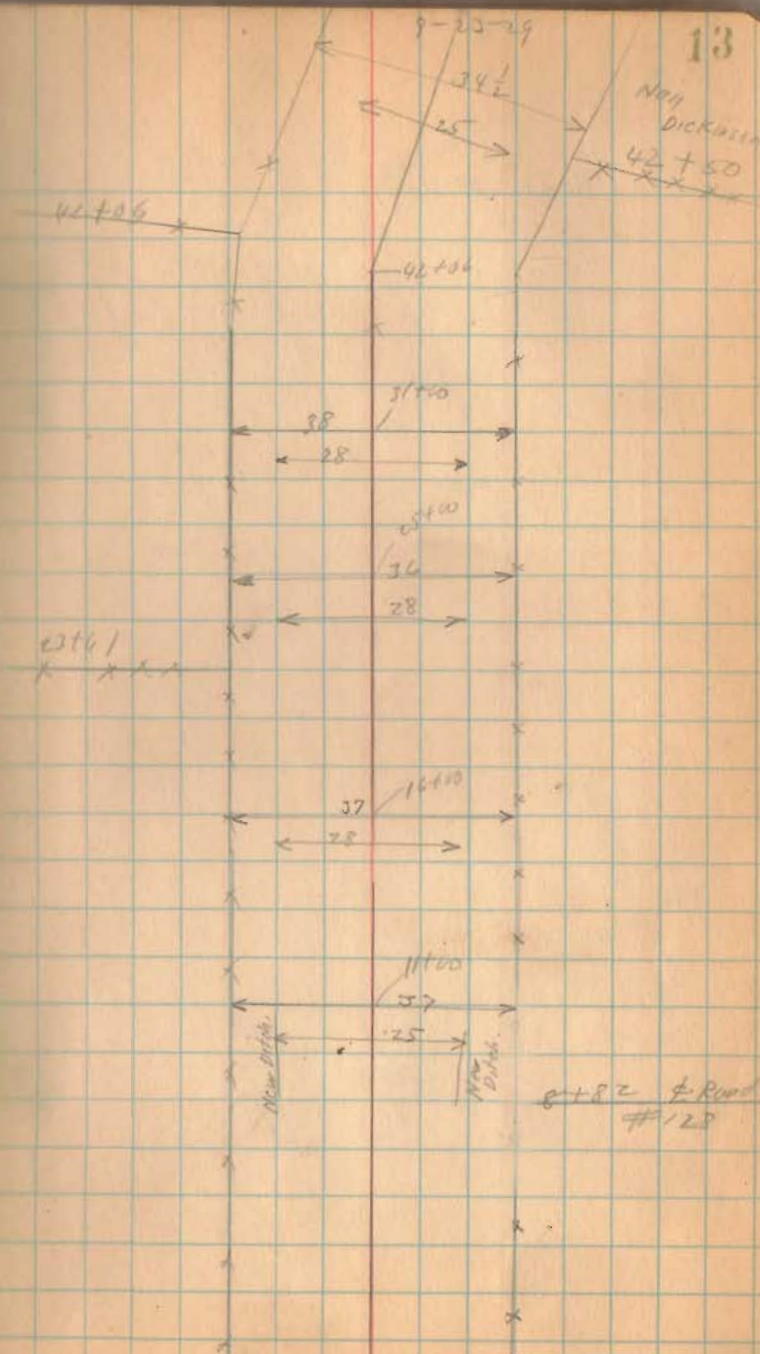
St. 0 & 100
Approximate Line
Between Perry Twp. & Jefferson Twp.
V.M.S. 5091

Road #129

35+10 L Right

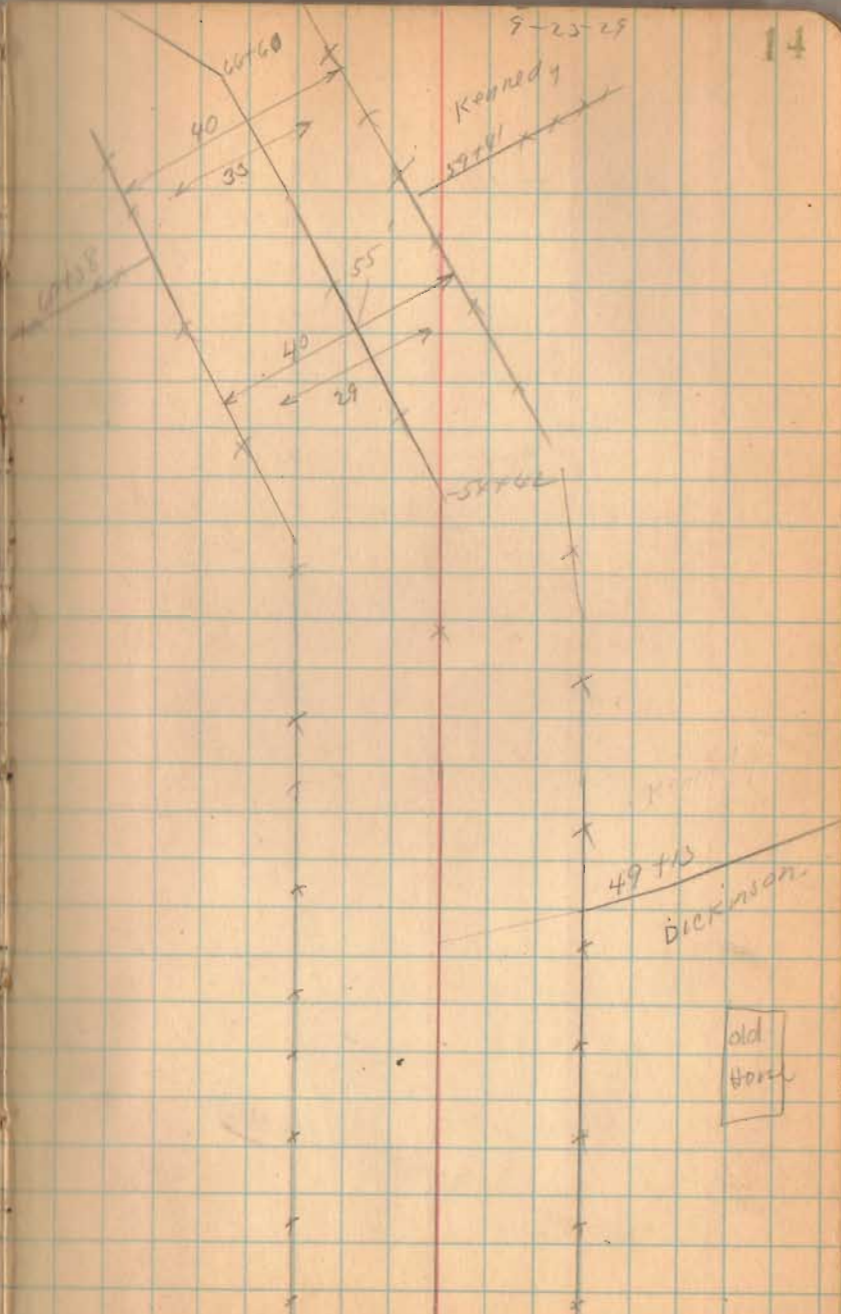
1322
INDEXED BY MAR

13



Road # 129

1322
INDEXED ON MAP



Road #129

to Road #2

See BOOK 579 page 60
71+52

1322
INDEXED ON MAP

69453

Boundary

68+22