

FB 711

C.R. 152
Perry Twp., Logan Co., Ohio
V.M.S. 3154

Sta. 103+51.33 to Sta. 110+22.08

Note: The Logan Co. Engineers Office assisted the O.D.O.T. Survey crew in setting these points.

Ref: Log/Uni - 33-25.50/0.00 plans
pgs. 540, 544, 579, & 581

curve data for (C-26) is found on pg. 544

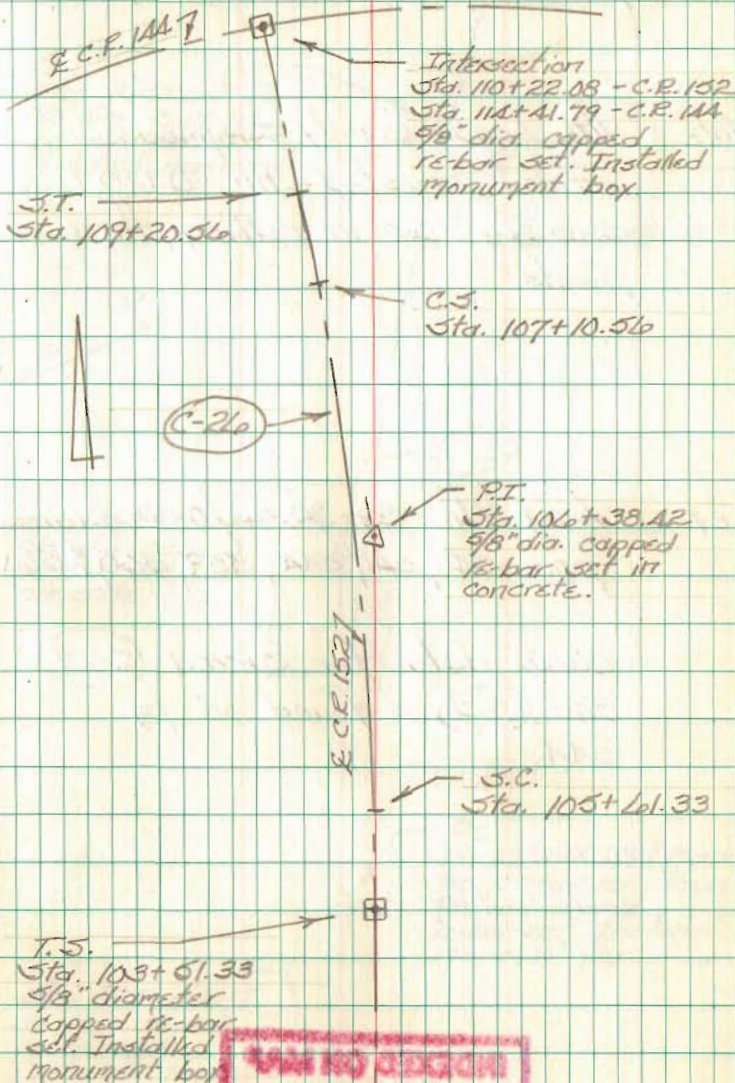
INDEXED ON MAP

1325

C. Nichols
C. Dill
B. Simmons
O.D.O.T. Survey Crew

Nov. 98

3



FB 711

C.R. 14A
Perry Twp., Logan Co., Ohio
Y.M.S. 315A
Sta. 127+54.17 to Sta. 153+43.12

Note: The Logan County Engineers Office assisted the O.D.O.T. survey crew in setting these points.

Ref: Log/Uni-33-25.50/0.00 plans.
pgs. 540, 541, 544, 559, 560, & 561

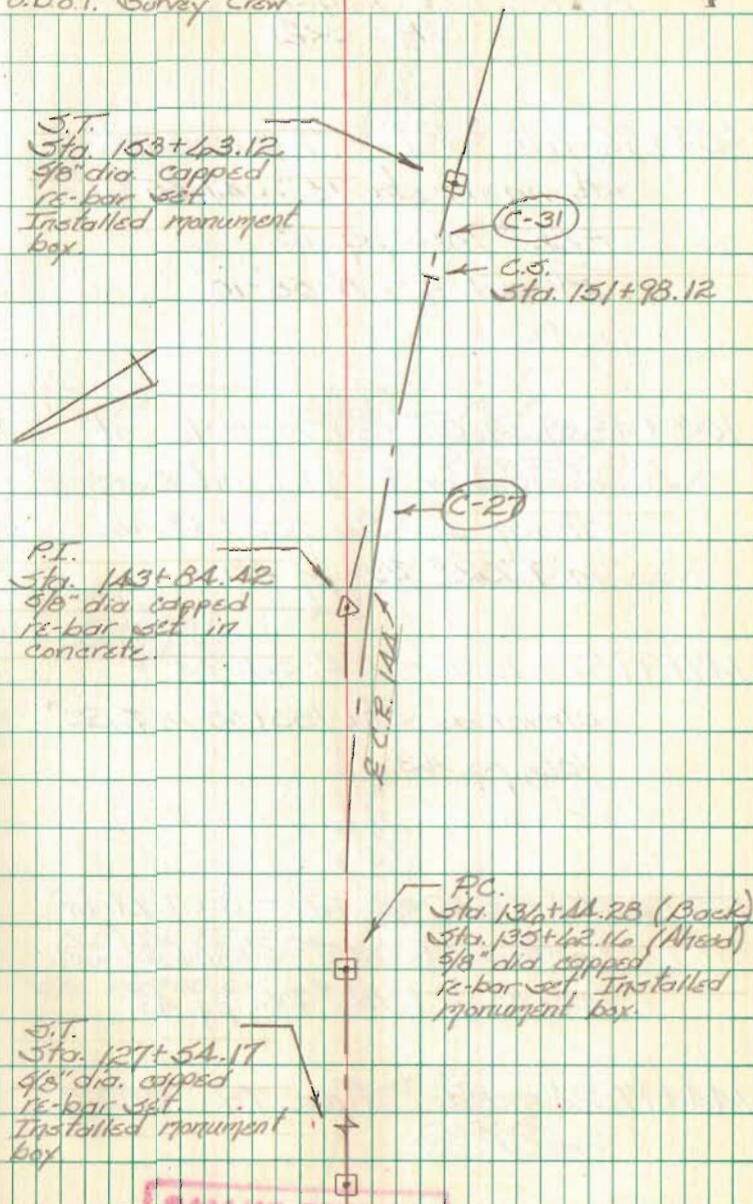
curve data for curved (C-29)
and (C-31) is found on pg.
544.

INDEXED ON MAP
1325

C. Nichols
C. Dill
D. Simmons
O.D.O.T. Survey Crew

Nov. 98

4



INDEXED ON MAP