

Road 19
 Bookscreek Twp.
 Perry Twp.

No record of well on
 this road from road No 8^{En 127}
 To S.H. 236

No stakes placed from 0+00 To 29+20.4
 From 29+20.4 To S.H. 236 stakes
 placed 25' from & for 50' Road.

Aug. 25, 1902 Placed stakes 0+00 to
 29+20.4 25' from & for a 50' road.
 Warm - Windy Wright
 W. Feltz

8+00

Stakes set for Monuments

Jan - 11-1904 25' from & for 50' Road,
 Sta 0+00 To 64+90

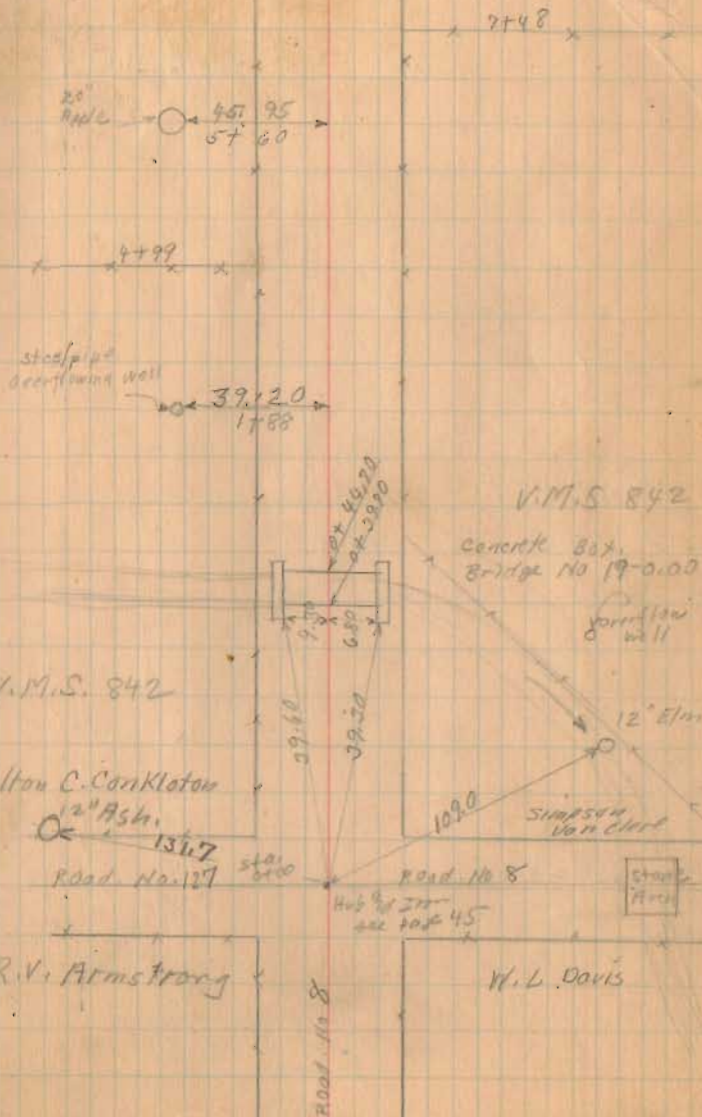
2+00

1325

INDEXED ON MAP

May 9-1902
 Rainy
 Wright
 M. K. K. K.

39



Road. 19



32700

29720.4

Township line (special)

21700

14700

1325

INDEXED ON MAP

40

5/9/32

Smith & Bookesack Tap

Smith & Bookesack Tap
(No Feas)

Perry Tap

(Placed Hub
at Tap
1/22/57)

29720.4

Found Stone
17x11x8 on top

NO Angle

Stake 25 Right

872+53

(1.000. Hub
31765.00
(249.80 from store)
1759' Left
Stake 25 Left

old

Bookesack Tap

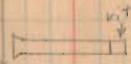
No Feas sight of
old face

Perry Tap

(Set Concrete
posts at Tap Line
Oct. 7, 1932.

Wright
M. Kirshen) 2707.515

2 Elm
17x11x8 24763



19794
16 C. 11.875

19724

base

19714

284
17737 20' oak

W. L. Smith dir

14721.5

Milton C. Cran Keton

(Hub
14762.5
Stake 25 Right

old 0°-07' Right
New 0°-07' 24

N. 5° 47' E

N 7-46 E

N 7-39 E

Road 19

64700

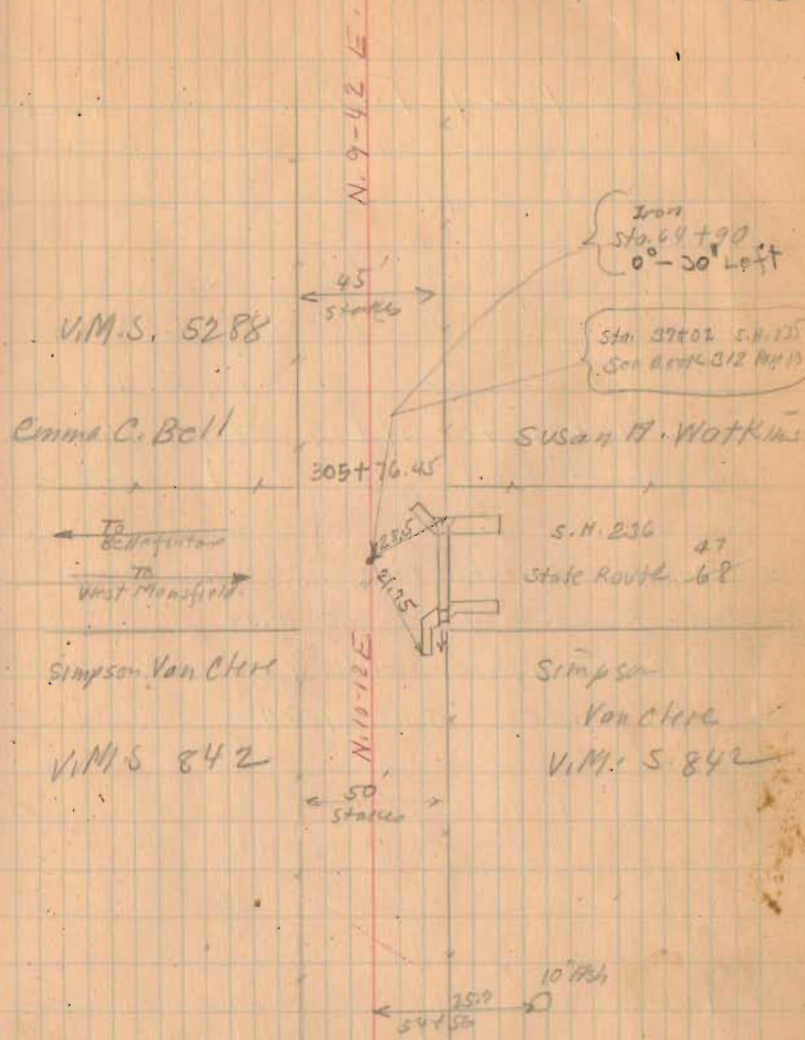
58700

51700

1326
INDEXED ON MAP

5/19/32
1/26/34

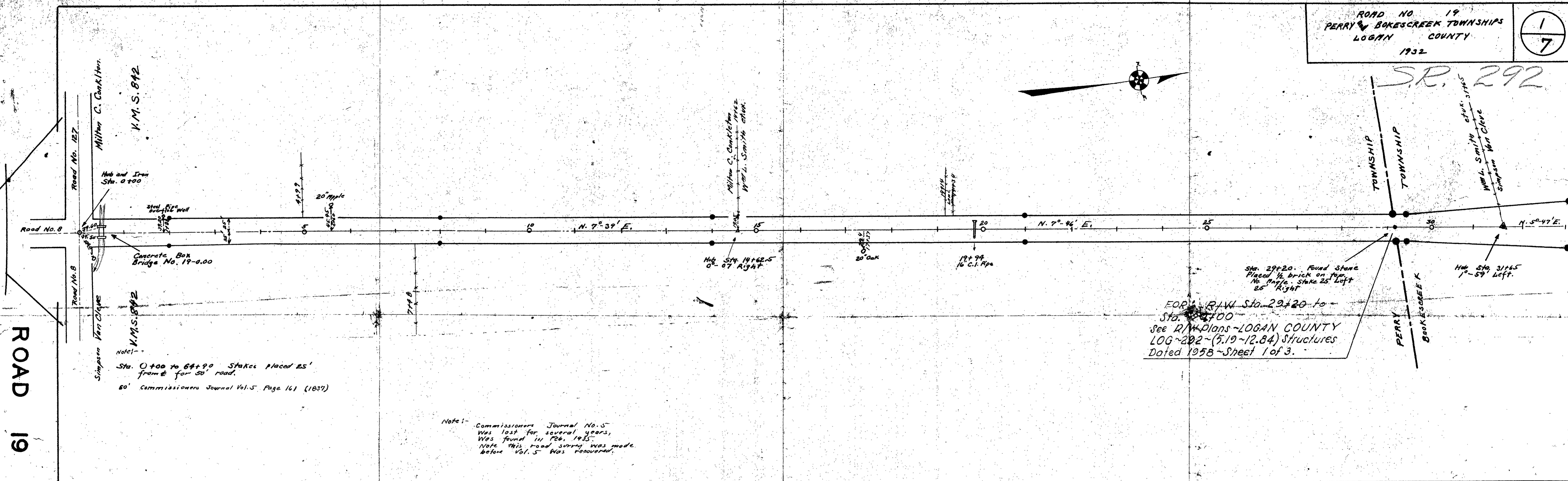
42



(Continued in Book 572 Page 44)

S.R. 292

ROAD 19

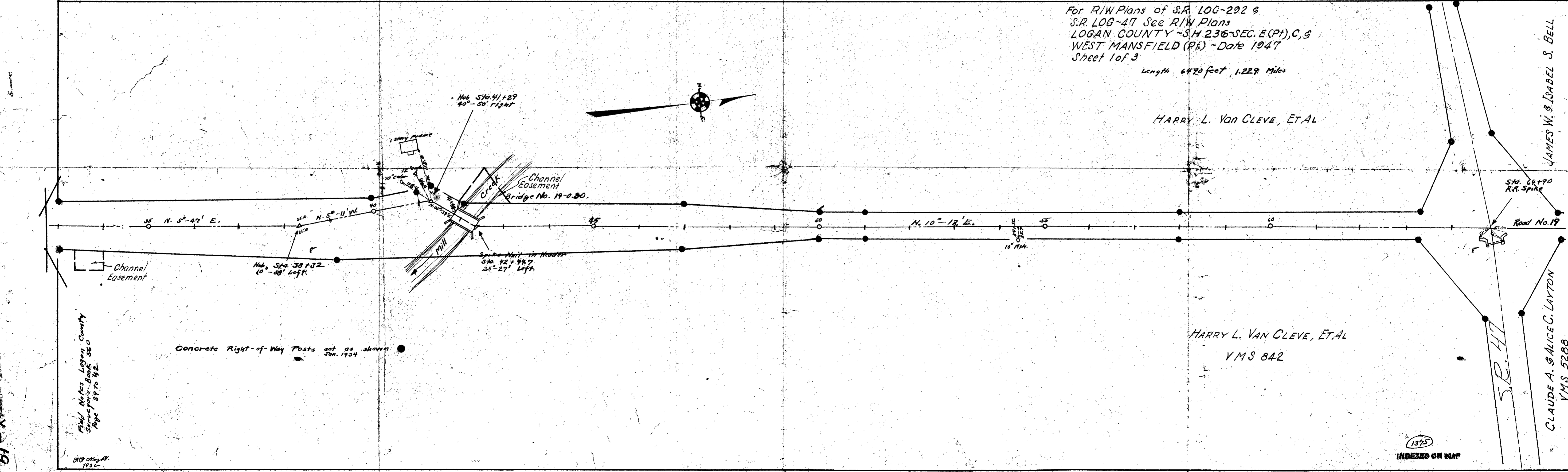


FOR R/W Sta. 29+20 to Sta. 31+00
 See R/W Plans - LOGAN COUNTY LOG-292 (5.19-12.84) Structures Dated 1958 - Sheet 1 of 3.

Note: - Commissioner Journal No. 5 was lost for several years, was found in Feb. 1945. Note this road survey was made before Vol. 5 was recovered.

For R/W Plans of S.R. LOG-292 & S.R. LOG-47 See R/W Plans LOGAN COUNTY - SH 236-SEC. E (Pt), C, & WEST MANSFIELD (Pt) - Date 1947 Sheet 1 of 3
 Length 6470 feet, 1.229 Miles

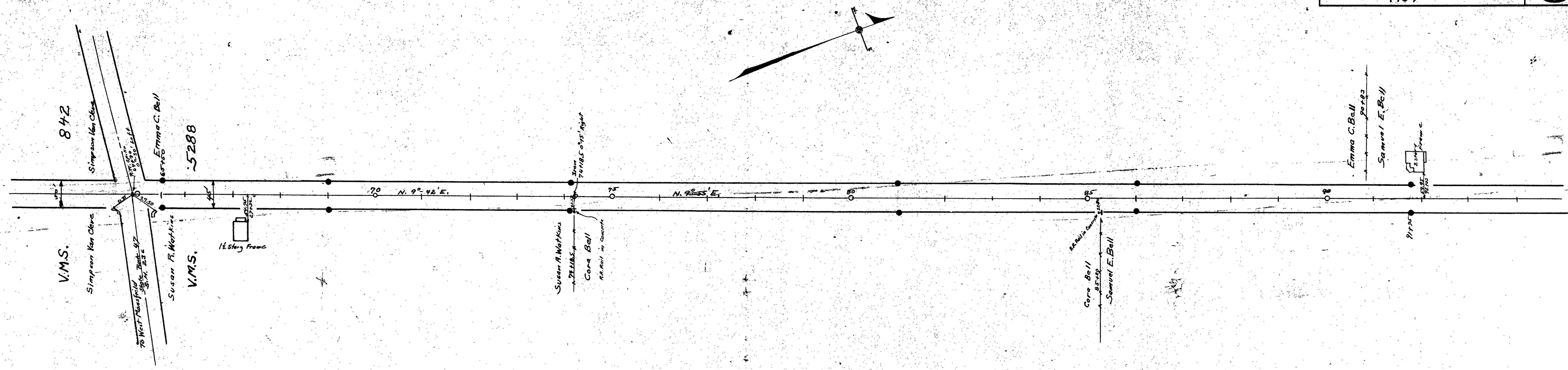
HARRY L. VAN CLEVE, ET AL



HARRY L. VAN CLEVE, ET AL
 YMS 842

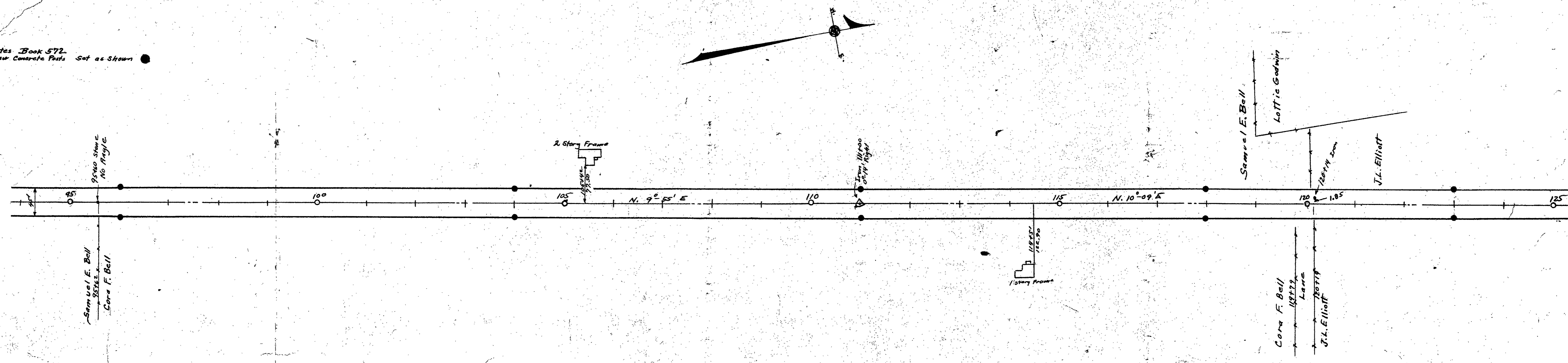
Field Notes Logan County Surveyors - Book 520 Page 39 to 42

JAMES W. & ISABEL S. BELL
 STA. 48+90 R.R. SPIKE
 ROAD NO. 19
 CLAUDE A. SAUCEG. LAYTON
 YMS 5288

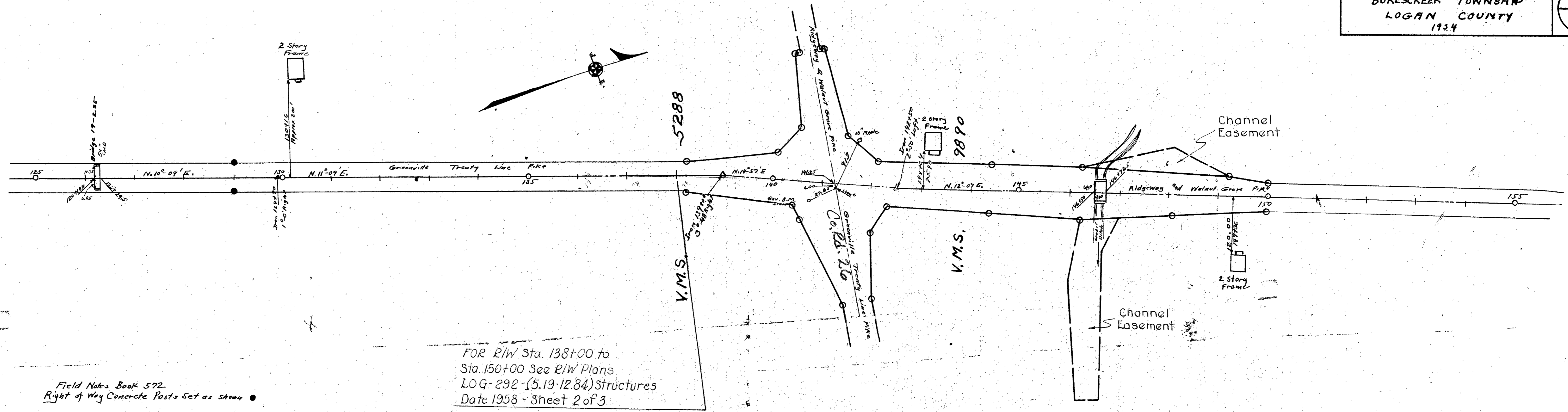


45' PIKE - Sta. 84+90 to 141+25
Greenville Treaty Lane Pike - Free Turn Pike
Record No. 9 Page 7, Book H Page 116
60' Commissioners Journal Vol. 5 Page 161 (1837)

Field Notes Book 572
Right of Way Concrete Posts Set as Shown

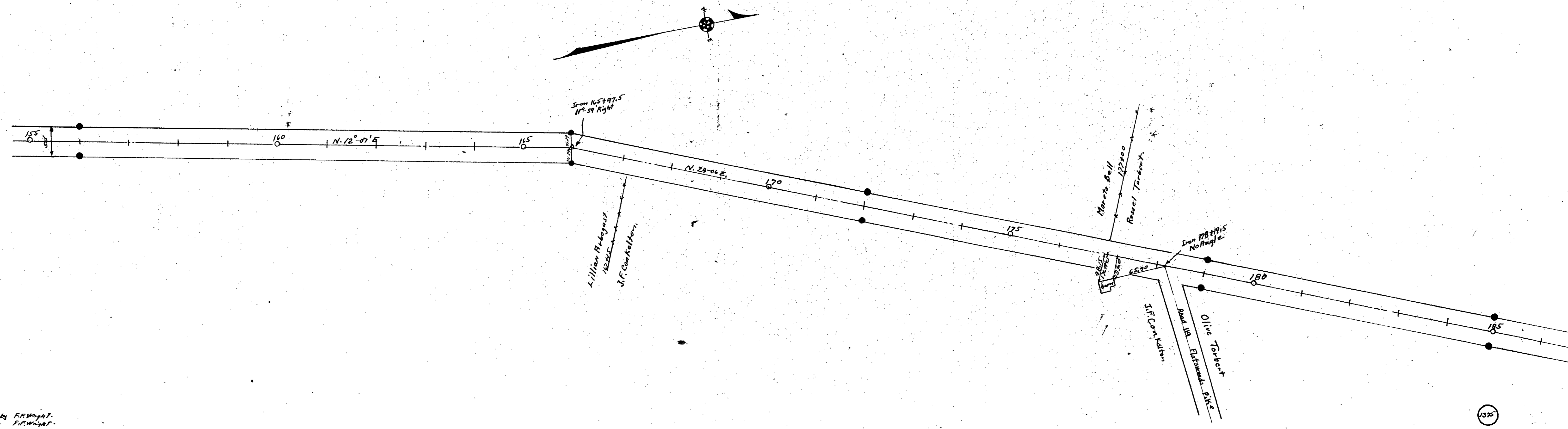


Surveyed By G. W. Wright
Drawn By G. W. Wright

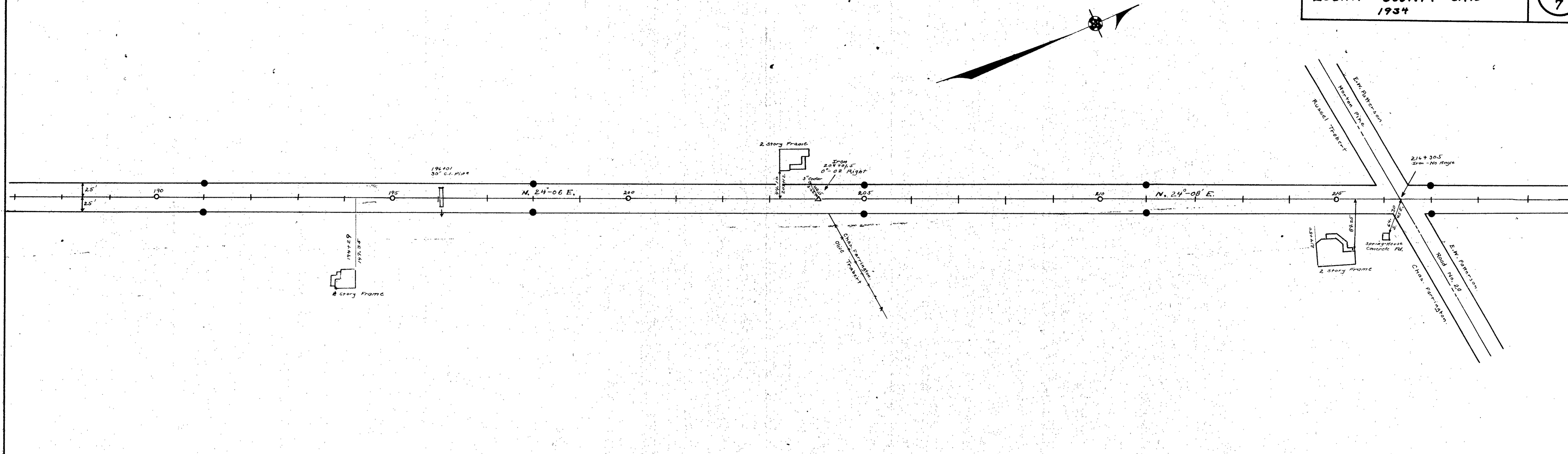


Field Notes Book 572
 Right of Way Concrete Posts Set as shown

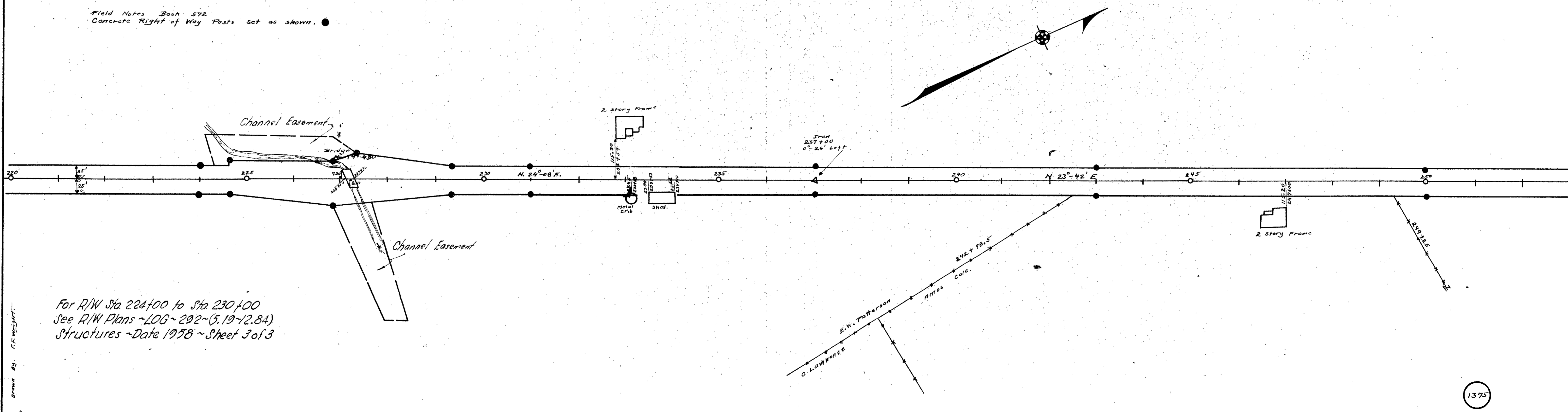
50' Pike Sta. 141+25 To Sta. 423+79
 Ridgeway and Walnut Grove Pike - Pike Book
 N Page 76 (1896)
 60' Commissioners Journal Vol. 5 Page 161 (1837)



Surveyed by F.R. Wright
 Drawn by F.R. Wright

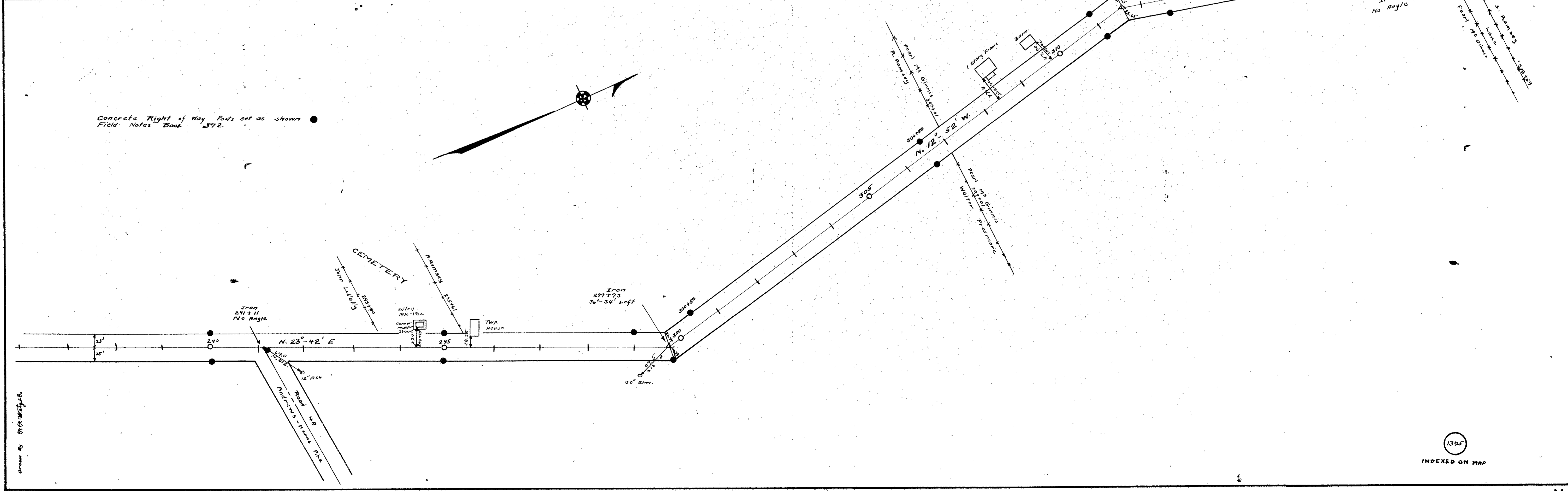
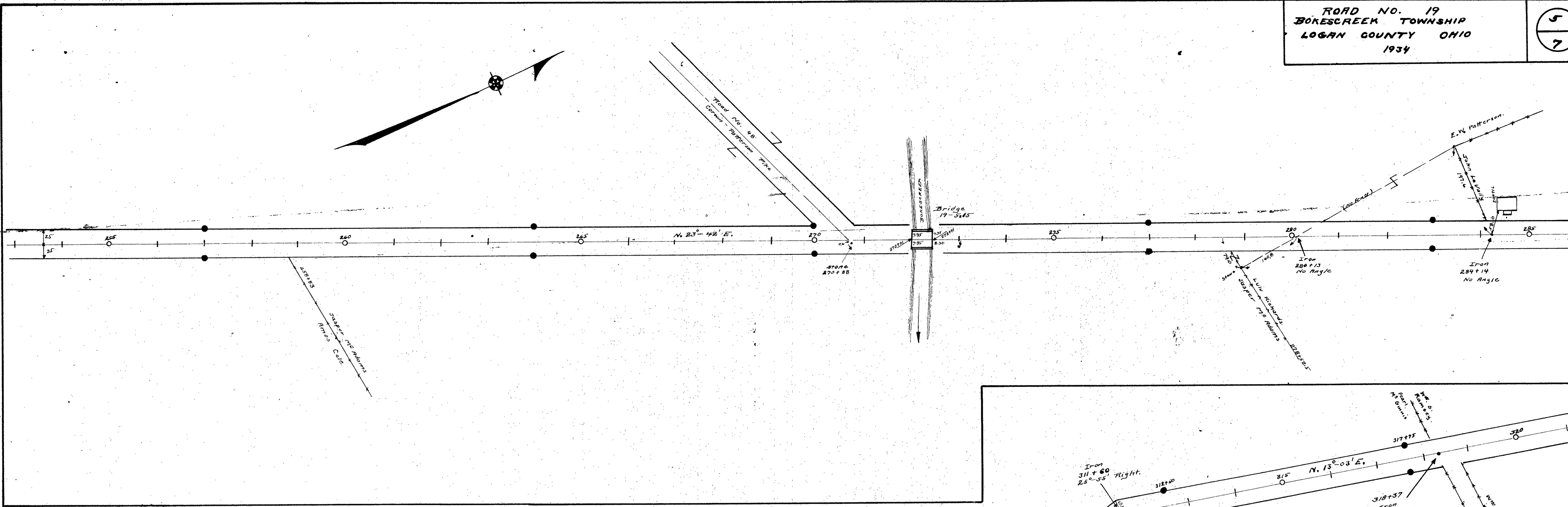


Field Notes Book 572
 Concrete Right of Way Posts set as shown. ●



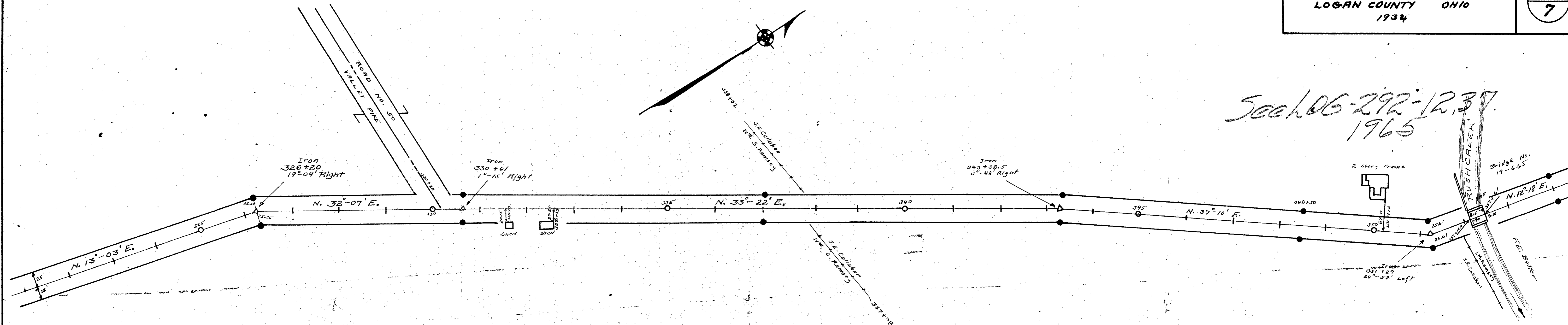
For R/W Sta 224+00 to Sta 230+00
 See R/W Plans ~LOG~202~(5.19-12.84)
 Structures ~Date 1938 ~Sheet 3 of 3

Drawn by R.F. WRIGHT

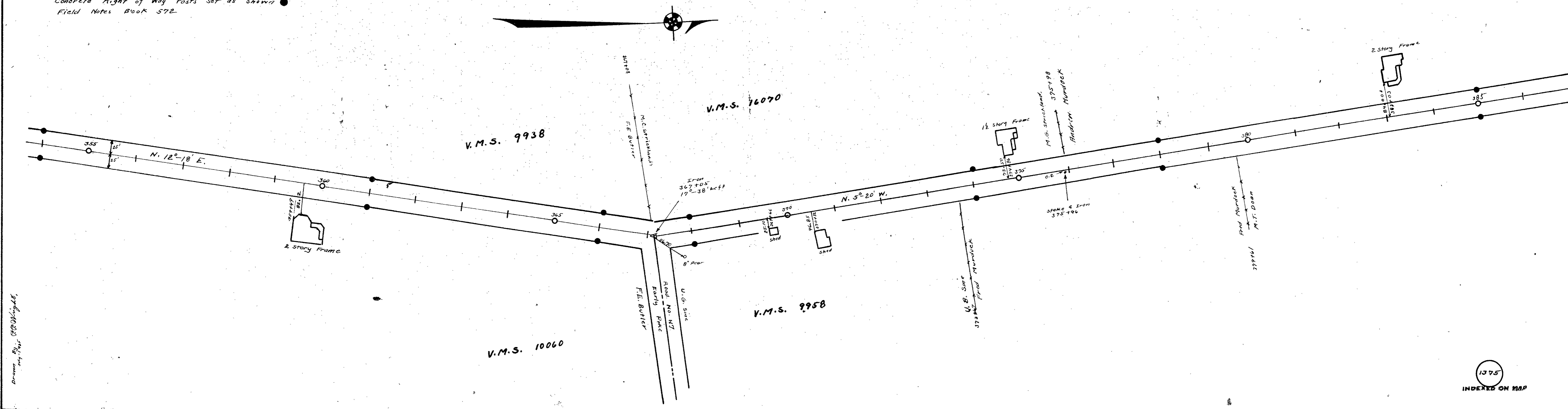


Drawn by G. H. [unclear]

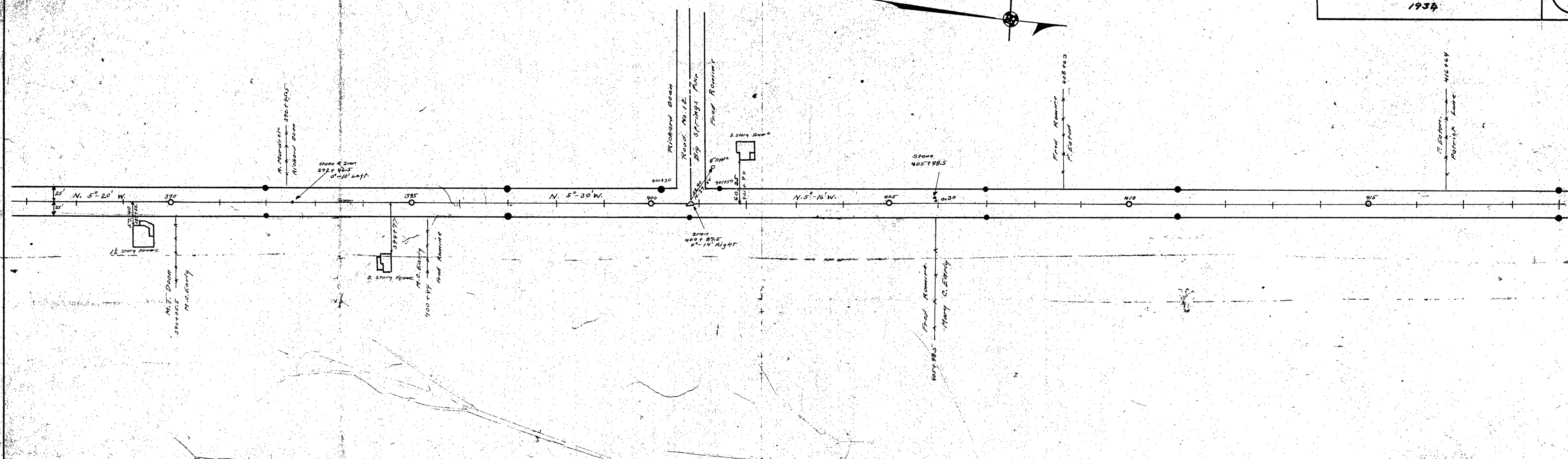
See 06-292-12, 31
 1965



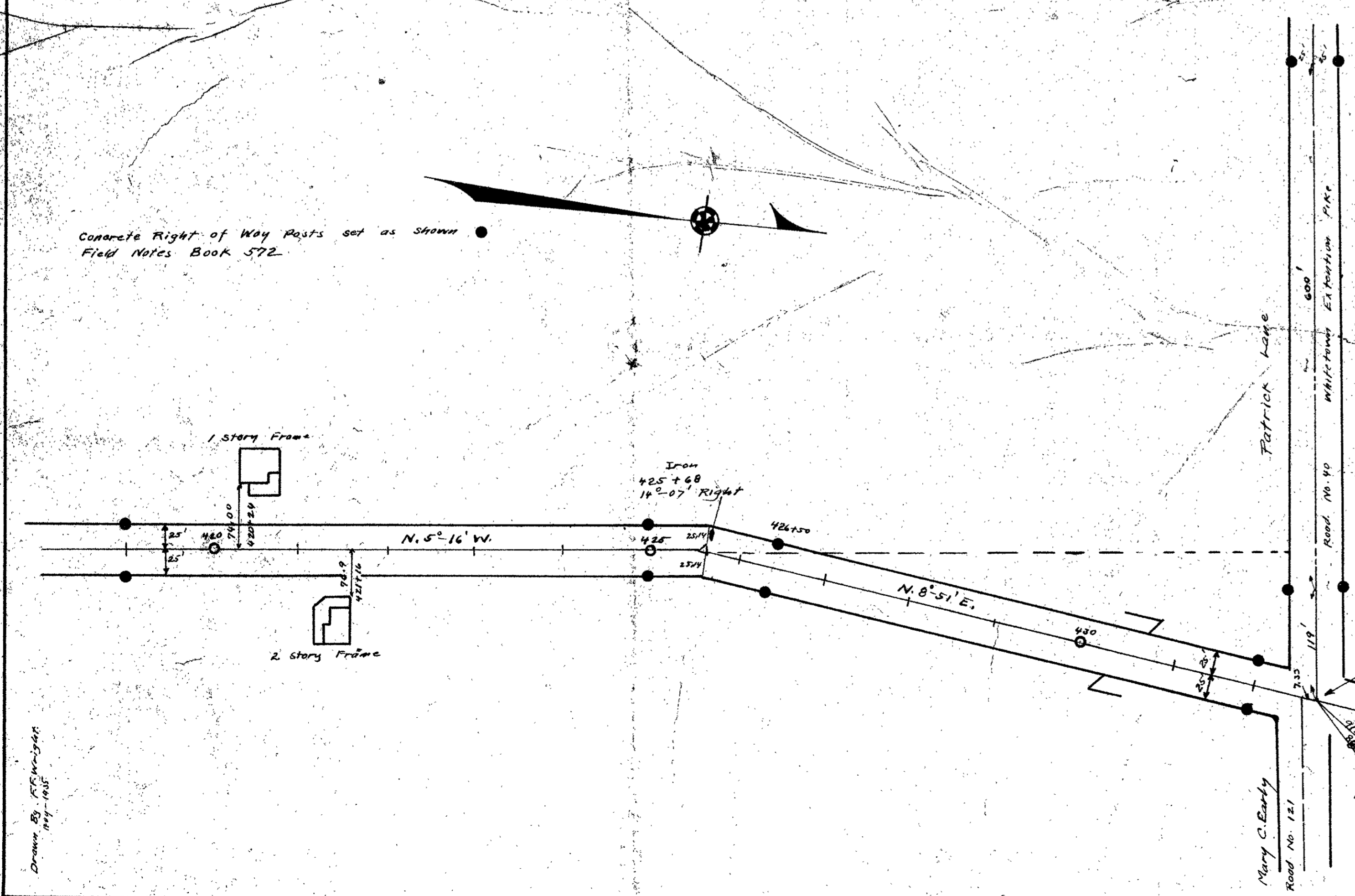
Concrete Right of Way Posts set as shown
 Field Notes Book 572



Drawn by C.E. Williams



Concrete Right of Way Posts set as shown
 Field Notes Book 572



50' sta. 741+85 to 432+79 Pigeonry Rd Walnut Grove
 Pike - Pike Book H Page 76 (1876)
 60' Commissioned Journal Vol. 5 Page 161 (1837)

Length 43279 Feet.
 Length 8.20 Miles.

Drawn by J.P. McLaughlin
 July 1934