

SOUTHARD SURVEY

9

The following described Real Estate situated in Perry Township Logan County, Ohio and being in V.M.S. 14894.

Beginning at an Elm tree at the southwest corner of V.M.S. 14894 thence with the west line of V.M.S. 14894 N. 5°-21' E. 21.10 chains to an iron pipe, thence S. 85°-35' E. 26.87 chains to an Oak tree in Herman and Charles J. Riley's west line; thence with said Riley's west line S. 6° W. 21.06 chains to a post in the south line of V.M.S. 14894, thence with the south line of V.M.S. 14894, N. 85°-35' W. 26.63 chains to the place of beginning, containing 56.37 acres.

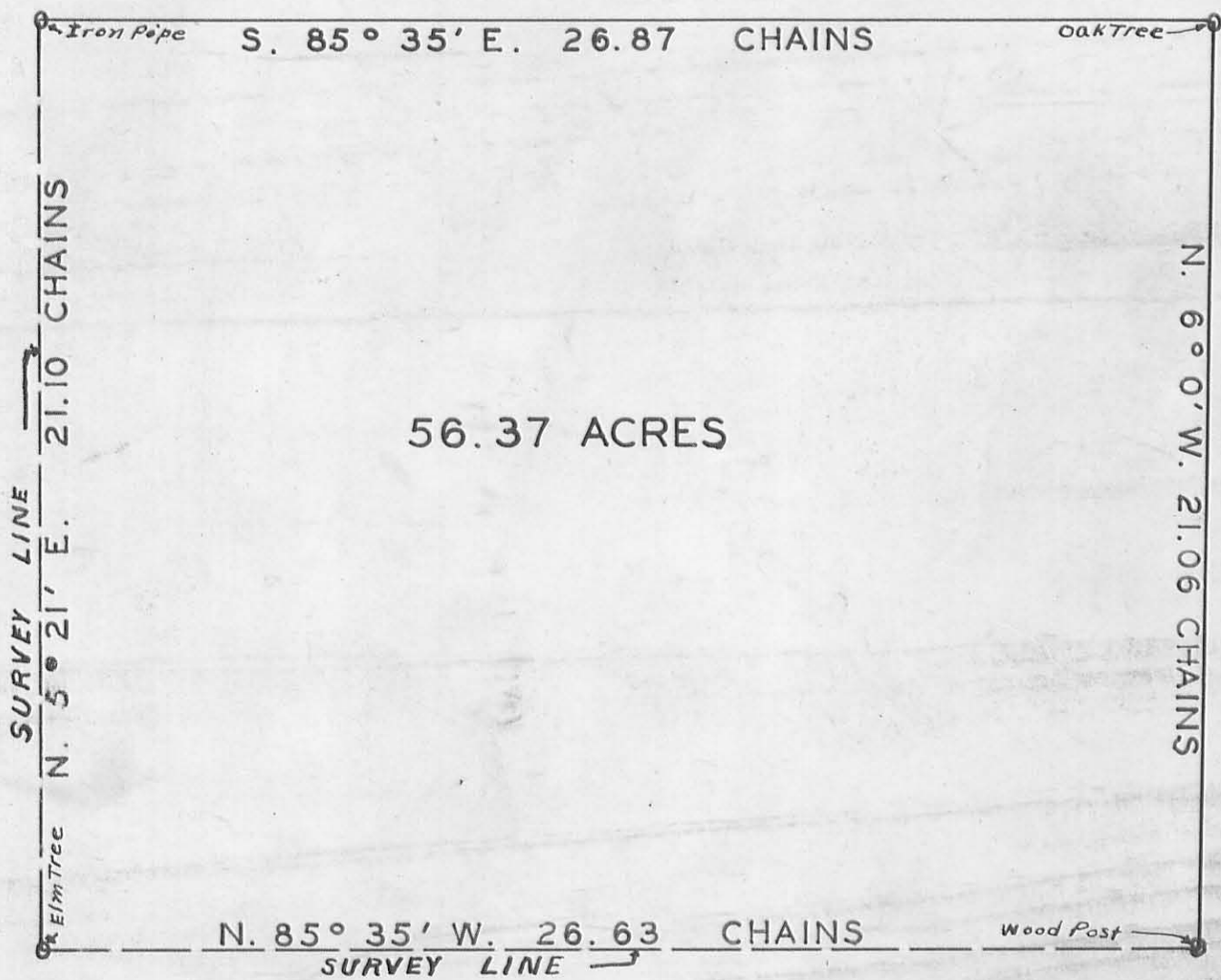
The above described tract of land contains 56.37 acres off of the south end of Mary E. Southard, et al 73.00 acre tract.

INDEXED ON MAP

1867

1D

SOUTHARD SURVEY
PERRY TOWNSHIP V.M.S. 14894
LOGAN COUNTY OHIO



Wilgus

INDEXED ON MAP
1067 IP