

2-1

Summary of line between
 J. M. Williams and Geo. Williams
 for Survey 3164 and 3161 in
 Perry Plat. Jan 8, 1920

Snow on ground. Cloudy.
 Snow - dust - cold.

Found square iron stake in
 road on corner for 3161 at a...
 Found iron stake in road
 at point is.

Set now a well flag at it.
 Bearing of axis is $N. 55^{\circ} 1/2 E$

B.S. at it then deflected 15° to
 left and run $S. 54^{\circ} 1/2 W$ 19.14 ch (7.75 p)
 and set $3/4"$ steel pin 30" long.

Set now to mid B.S. at a
 and deflect left $17^{\circ} 30'$ and
 $S. 33^{\circ} 1/2 E$ Run 11.44 ch then
 extend and set iron pin $3/4"$ x 30"
 on edge of gravel bank

27.5 p = 19.14 ch.

12.25 p = 4.14 ch.

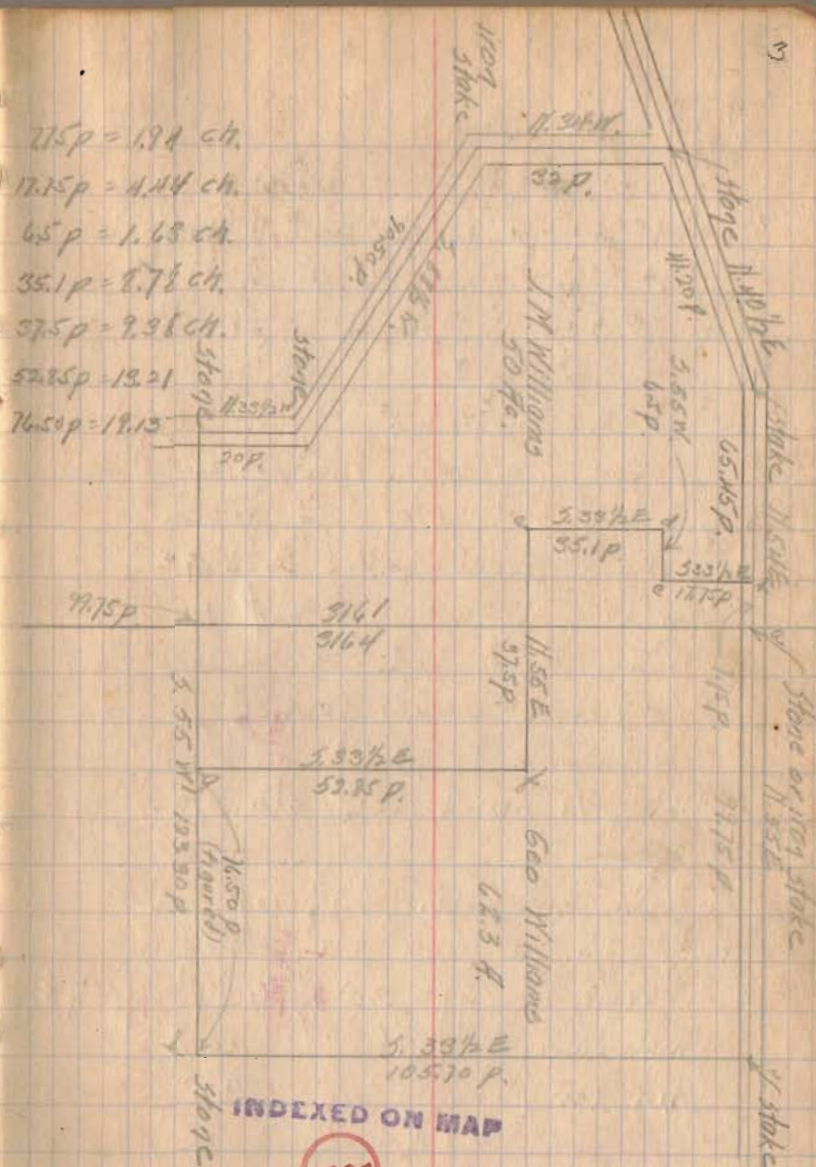
4.5 p = 1.65 ch.

35.1 p = 8.72 ch.

57.5 p = 9.38 ch.

52.25 p = 19.21

76.50 p = 19.13



Set up iron bar at point c
 with BS at b. and deflected left
 18°-30' R. read 5.524
 run 1.62 ch. and set steel bar
 3/4" round by 30°

Set up iron bar at point d.
 with BS at c. and deflected-
 left 88°-30' read 5.33 1/2 E
 Measure along road 1.63
 chain and BS. line check
 ok with angle turned.
 Measure 1.73 ch and
 set 3/4" round x 30° steel bar

Set up iron bar at c
 with BS. on line d. and
 deflected L 91°-30' Read 5.54 E
 Measure 1.36 ch and
 set iron bar 3/4" x 30°

Set up iron bar at c with BS
 at c and deflected L 90°-30'
 Reading S. 33 1/4 E
 Run 13.21 and set
 3/4" x 30° in hole. 4' across
 in E. hole of fence

4:30 P.M.
 Harley Ammittant bank
 Max Austin Welpen
 Kerra

Record in 113-266
 113-267