

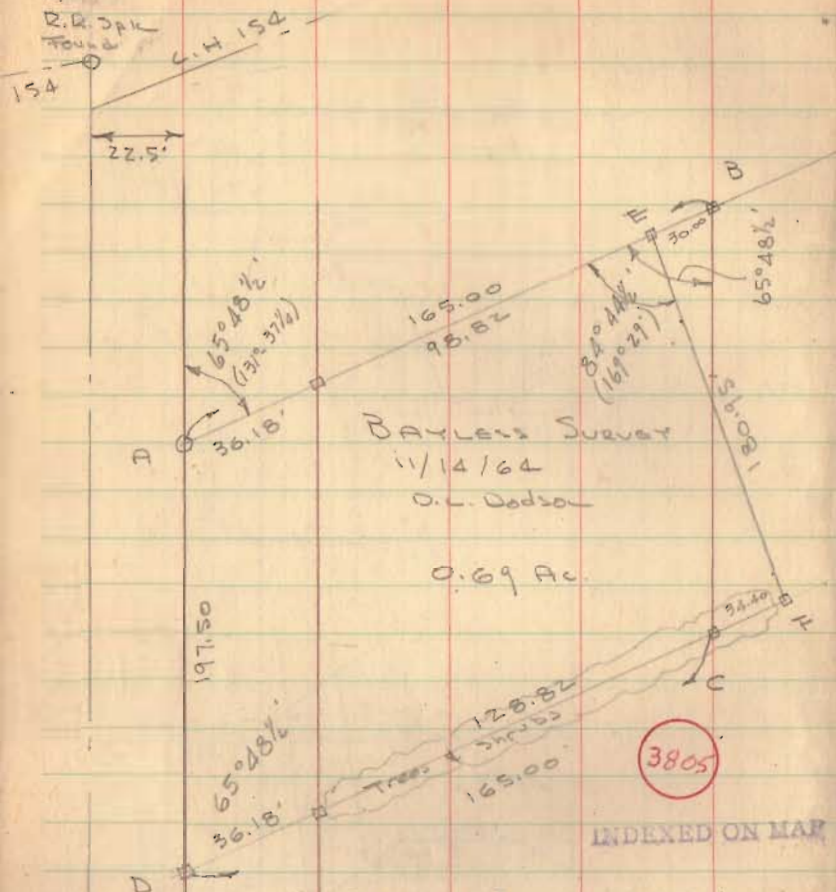
RESURVEY OF  
 PETERS TRACT  
 V.M.S. 4689 - PERRY TWP.  
 LOGAN COUNTY, OHIO  
 FOR  
 HARVEY J. BAYLESS  
 NOV. 14, 1964  
 SCALE 1" = 40'

**REFERENCE:**  
 Deed Vol. 294 Pg. 486  
 Vol. 143 Pg. 579  
 Vol. 109 Pg. 470  
 Co. Eng. F.B. 645 Pg. 33

□ = 1/2" # Bar Set  
 ○ = 1" # Bar Found

3805  
 IF  
 INDEXED ON MAP

*Dan L. Dodson*  
 Dan L. Dodson  
 Reg. Surveyor 4270  
 Bellefontaine, Ohio



BAYLESS Survey

11/14/64

O.L. Dodson

0.69 Ac.

Area A-B-C-D = Orig. tract

" A-E-F-D = Revised P

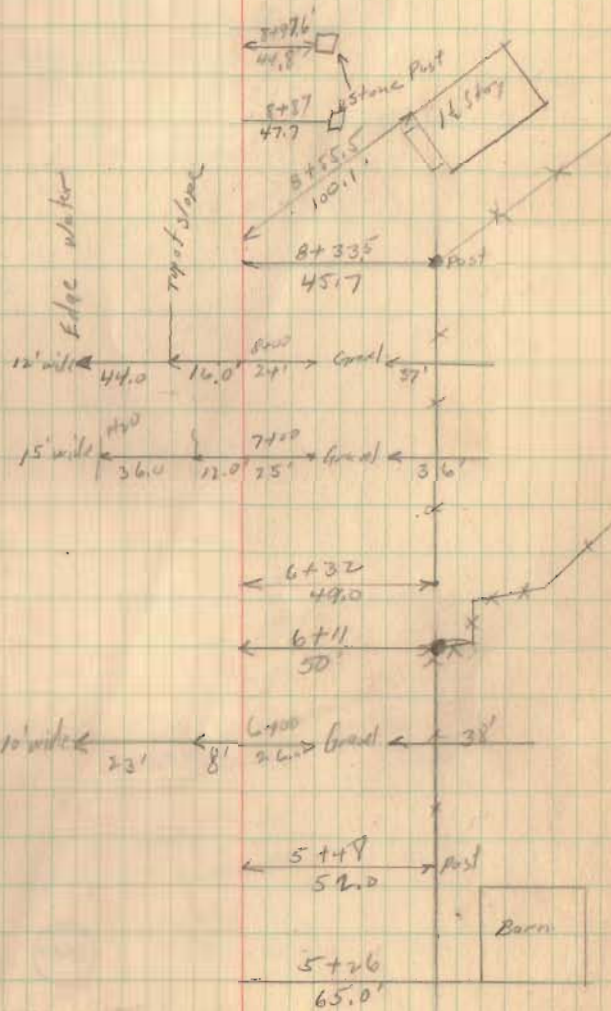
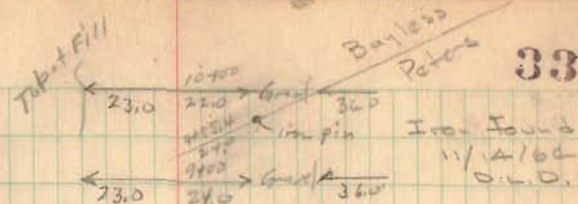
= 0.69 Ac.

□ = 1/2" # Bar Set

○ @ A = 1" # Bar Found 5/9/55

1820

INDEXED ON MAP



33

Barn

BAYLESS SURVEY  
PERRY TOWNSHIP

18.31

89.00  
65.48  
24.12

1.09635

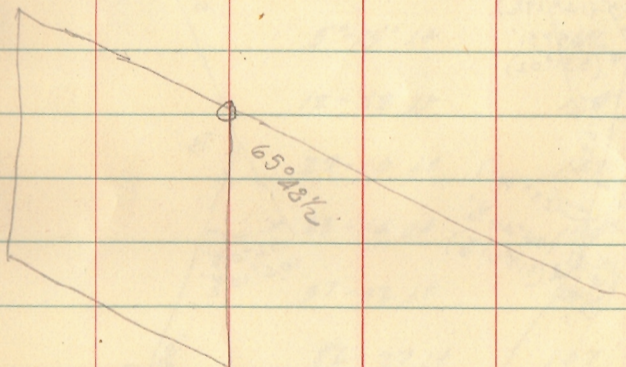
33

328905

28905

Dec. 24' x 33' =

36,179.55



371.5'

meas  
710.2'

INDEXED ON MAP

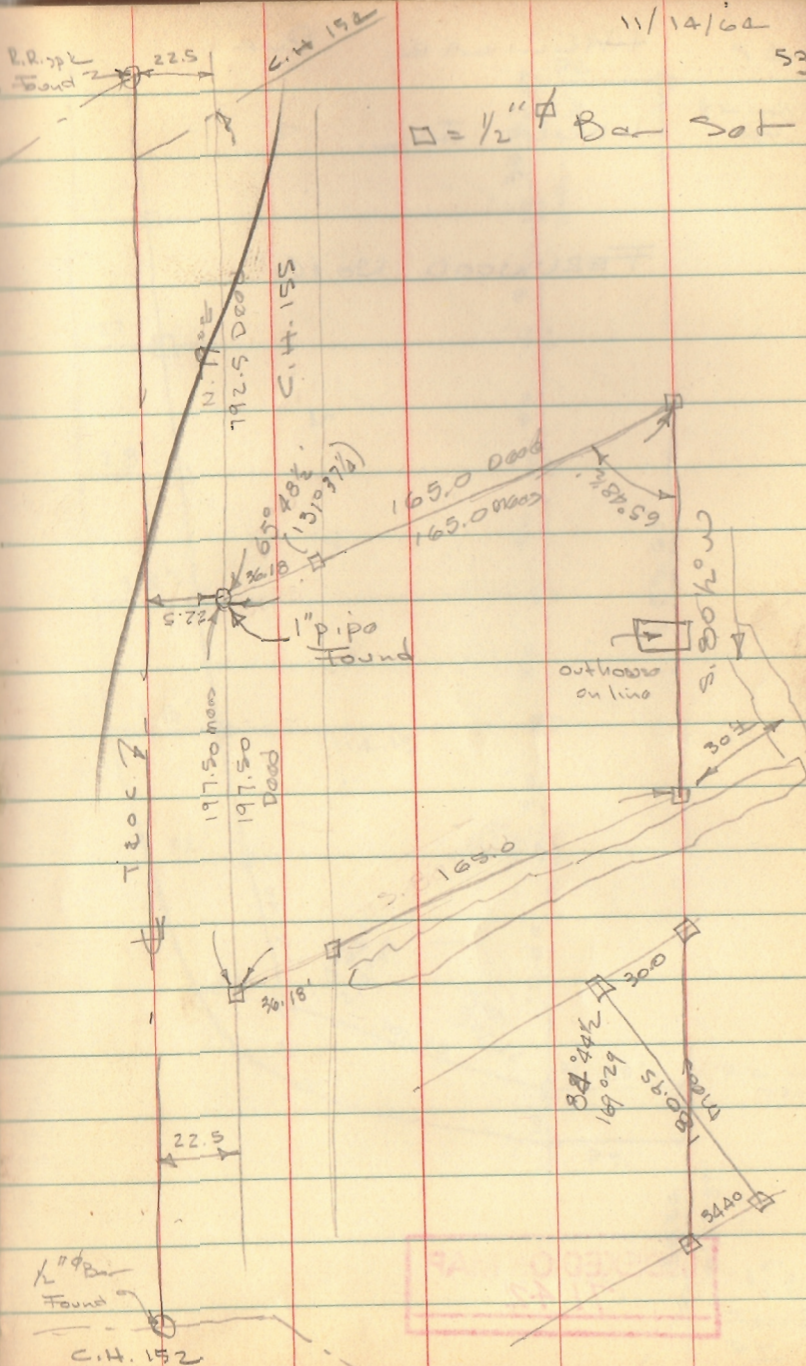
3805

11/14/62

53

R.R. 1/2  
Found 22.5

□ = 1/2" Bar Set



1" pipe  
Found

C.H. 152

INDEXED ON MAP  
3805