

FB 703

Survey of C.H. No 13

Parry + Rushcreek Twp

13+19 24" Conc. pipe w/24" CMD Ext. on Rt.

10+00 R/R Spike set for R/W Man's.

5+90.3 Harrow tooth fd. 115 Lt. of  $\frac{1}{2}$

5+00 R/R Spike set for R/W Man's.

1+76.75 Harrow tooth found- 0.73' Lt of  $\frac{1}{2}$

1+44.91 R/R Spike set for R/W Man (Rt only)

1+00 R/R Spike set for R/W Man. (Lt only)

0+00 Iron pin fd @ int. CR 8, CR 12,  
and SR 292

2/22/64

Tavis  
Cummins  
Maucher

25

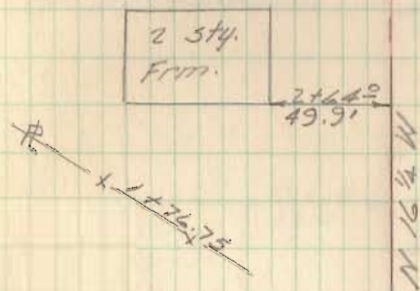
4329

INDEXED ON MAP

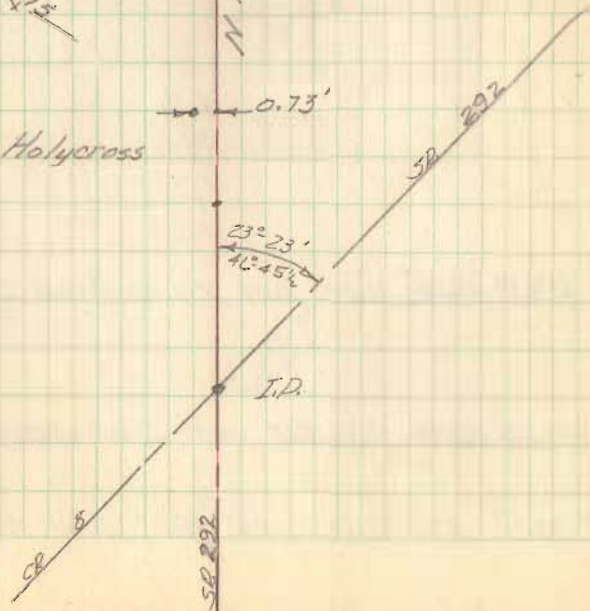
Walter P. Folk



Gladys M. Tanner



Edwin D. Holycross



FB 703

30+00 R/R Spike set for R/W Mon.

25+00 R/R Spike set for R/W Mon.

22+37.39 5/8" iron pin fd angle 0°12' Rt.

20+00 R/R Spk. set for R/W Mon

15+00 R/R Spk. set for R/W Mon.

6/27/24

CR 12

Frank Armstrong

~~31+1/2.5~~ x R

Tavis  
Cummings  
Kraucher

26

Bessie Cronkleton

24+78  
58.0

2 Sty.  
Frm.

Corn  
Crib

23+18  
23.0

23+08.5  
79.1

Barn

N 72 5/8 W

4. Twp Rd 127

Sta 22+37.39

Walter P. Polk

Glady's M. Tanner

67°22' →  
134°-11 1/2'

N 16 1/2 W

FB 703

60+00 R/R Spk. set for R/W Mon.

55+42.2 1" iron pin fd. 3.15' Rt of &

55+00 R/R Spk. set for R/W Mon. (Rt. only)

52+71.5 15" C.M.P.

52+70.35 1/2" iron bar fd. 2.0' Rt of &

50+00 R/R Spk. set for R/W Mon

45+51.4 1" iron bar fd 1.6' Rt. of &

45+00 R/R Spk. set for R/W Mon. (Rt. only)

40+00 R/R Spike set for R/W Mon's.

35+00 R/R Spk. set for R/W Mon's.

34+89 16" C.I.P.

L/23/64

Tavis  
Cummins  
Hauchar

7-7

~~R 55+42.2 Springfield Girl  
Scouts Inc.~~

CD 12

1 st. from

55+06  
100'±

3.15'

Ella C. Webber

Mary J. Abbott

12.4 15.8

20'

~~52+70.35~~

~~R 45+51.4~~

1.6'

Mary L. Smith

Frank Armstrong

~~38+32~~

16 19

FB 703

80+00 R/R Spike set for R/W Mon.

75+00 R/R Spike set for R/W Mon

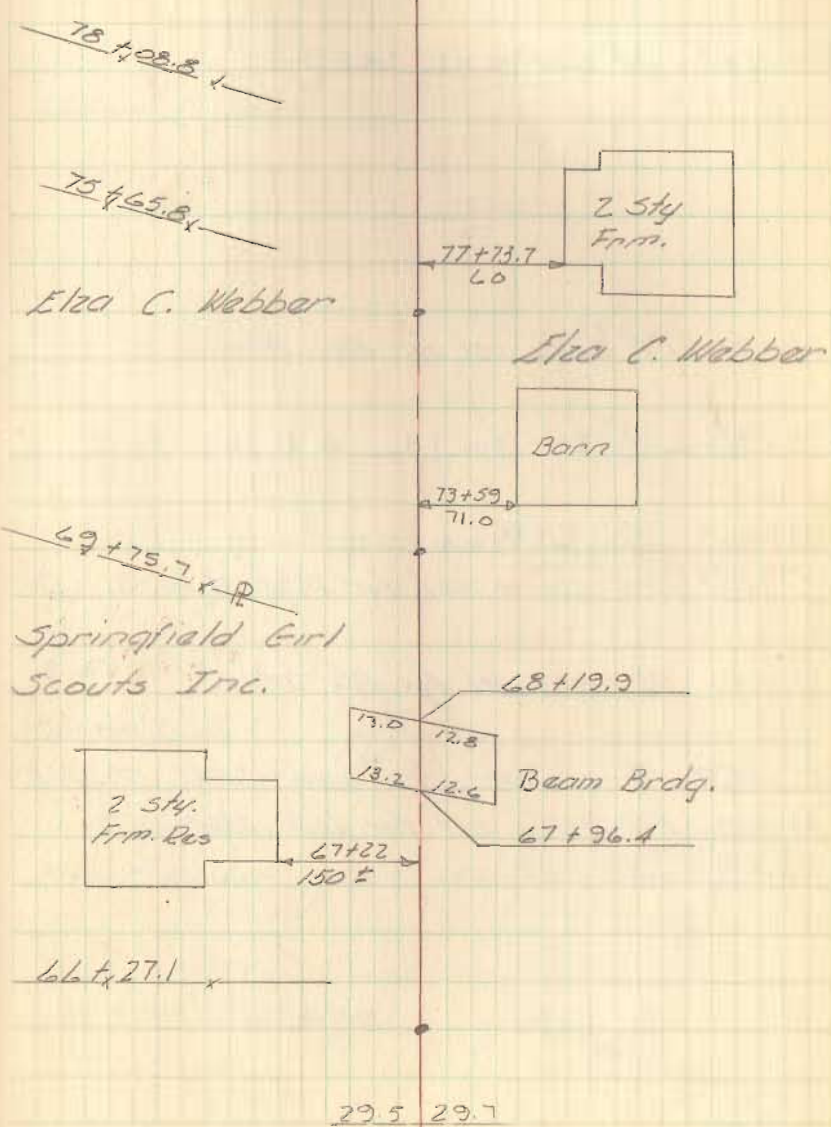
70+00 R/R Spike set for R/W Mon.

65+00 R/R Spike set for R/W Mon (1st only)

62+34.7 6" Conc. pipe

28

CR 12



100

98+24.8 24" CIP

95+00 RR Spike set for R/W Mon.

92+53.2 1/2" Iron pin Fd 0.4' Lt

91+41.2 36" C.I.P.

90+00 R/R Spike set for R/W Mon

87+00 RR Spike set for R/W Mon.

85+84.4 Stone under steel cover = 5847 0°-28' Lt

85+00 R/R Spike set for R/W Mon

84+27.6 12" CMP

William F. Loran

92+53.2

Guy Rostofor

87+04.4

Claude Watts

85+64.5

Elza C. Webber

20.2 24.0

95+82.3  
95

1 Sty  
Frm

95+17.4

0.4' Claude Watts

19.0 18.0

91+08.2



47

Def. angle for  
5847 St. to F.  
0° 01' 20" Lt

24.0 25.2

1 Sty  
Frm

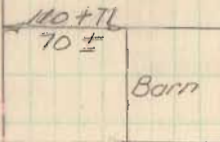
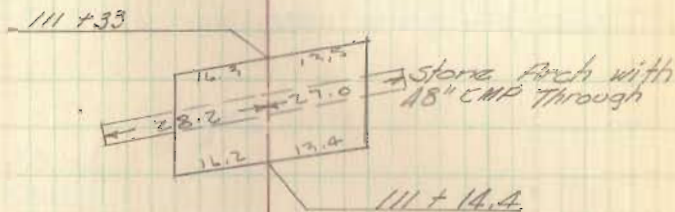
81+48.1  
45

82+12

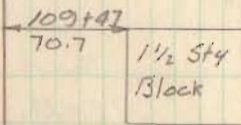
110+00 RR Spike set for R/W Mon (Lt only)

11  
105+00 RR Spike set for R/W Mon. (Lt only)

103+10 8.2' x 11.3 Arch Pipe



Marshall Dugh



L.R. McKeever

~~105+17.8~~

~~105+17.8~~

320 / 320

125+00 RR Spike set for R/W Mon.

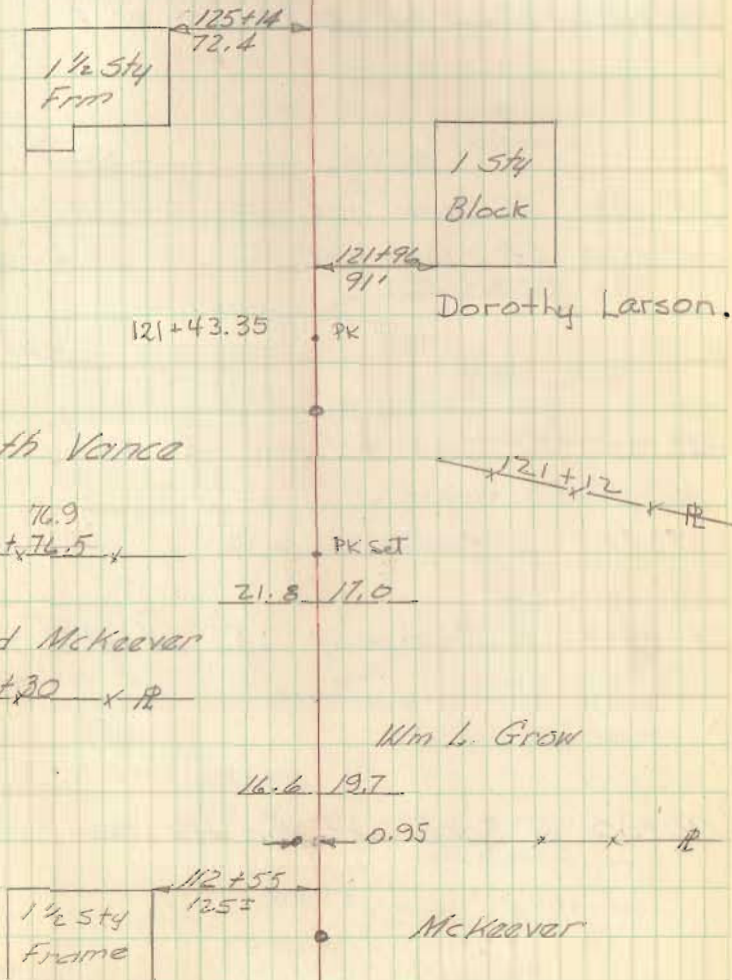
120+00 RR Spike set for R/W Mon.

119+30.7 12" C.I.P.

116+34 16" C.I.P.

115+08.2 1" iron pin 0.95 Lt. of  $\frac{1}{2}$

115+00 RR Spike set for R/W Mon.



FB 703

155+00 RR Spike set for R/W Mon

150+26.85 RR Spike found on E

150+00 RR Spike set for R/W Mon

146+38.7 1" IR fd 0.25' Rt of E

145+00 RR Spike set for R/W Mon. (Lt only)

140+00 RR Spike set for R/W Mon

135+00 RR Spike set for R/W Mon.

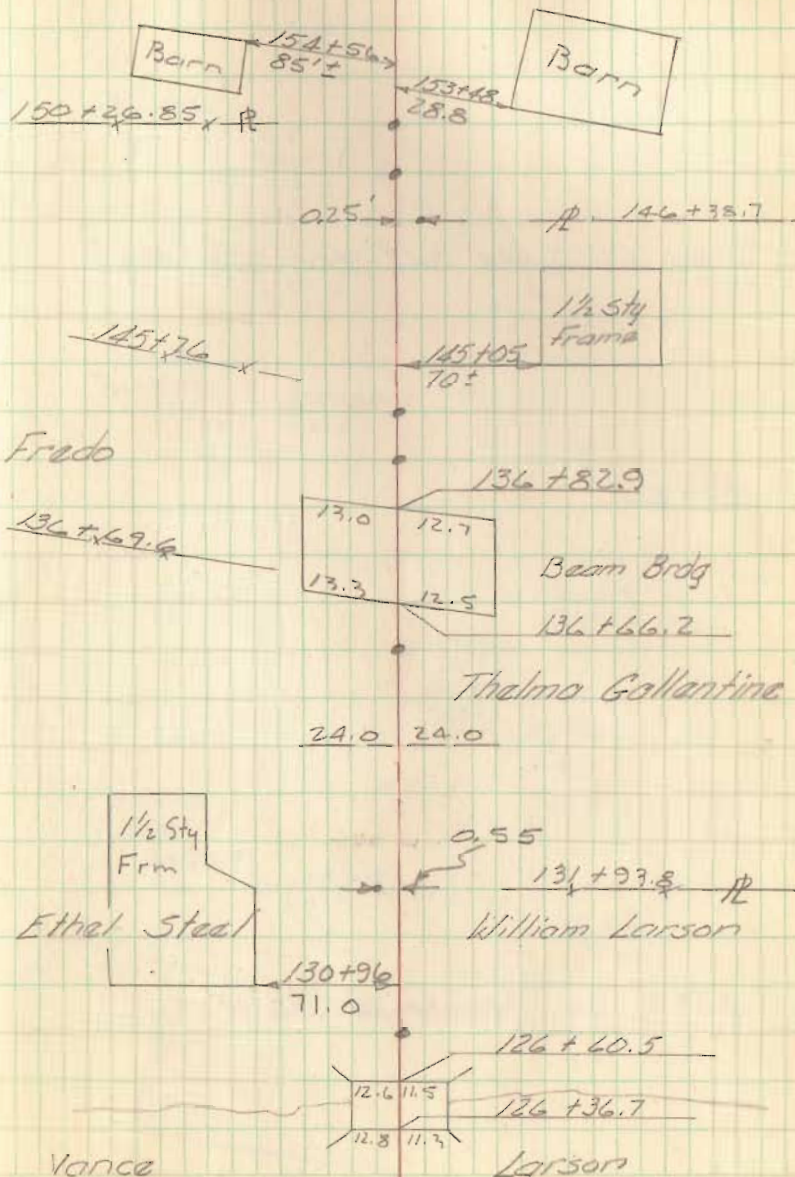
133+41 16" C.M.D

131+93.8 1" Iron pin .55" Lt of E ↘

130+00 RR Spike set for R/W Mon

32

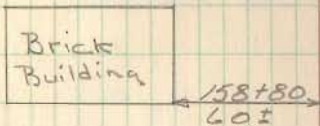
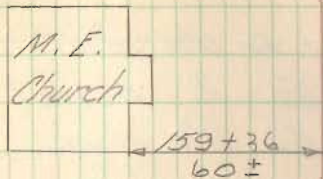
CD 12



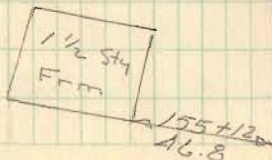
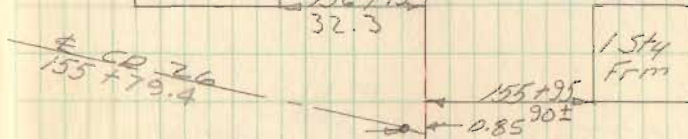
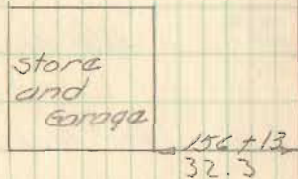
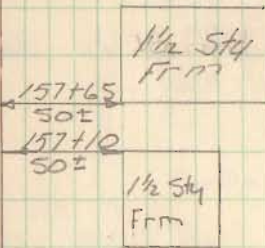


159+00 RR Spike set for R/W Mark

155+79.4 RR Spike fd. .85' Lt of  $\phi$



158+15



FB 703

195+00 RR Spike set for DW Mon.

190+00 RR Spike set for DW Mon.

185+93.85 Iron Pin Fd. R 0.27 Rt

185+00 RR Spike set for DW Mon.

183+30.9 Iron Pin fd 0.1' Lt

180+00 RR Spike set for DW Mon.

175+00 RR Spike set for DW Mon.

170+00 RR Spike set for DW Mon.

165+00 RR Spike set for DW Mon.

161+00 RR Spike set for DW Mon.

160+21.67 Iron pipe No Pinqle

34

CD 12

194+88.3

192+62.5

0.27

Barn

0.1 183+30.9

180+82  
150±

1 Sty  
Frm

178+28  
60

178+99  
125

Barn

177+9A  
75

2 Sty  
Frm  
Bas

174+17.6

8.9 6.1  
8.4 6.2

Porcha

173+68.0

167+66

1 Sty  
Frm

162+59  
50±

160+21.67

CD 26

160+21.67

235+00 RR Spike set for R/W Mon.

230+00 RR Spike set for R/W Mon

228+06.80  $\frac{1}{2}$ " iron pin fd Def  $0^{\circ}05' R$

225+00 RR Spike set for R/W Mon

220+00 RR Spike set for R/W Mon

215+00 RR Spike set for R/W Mon

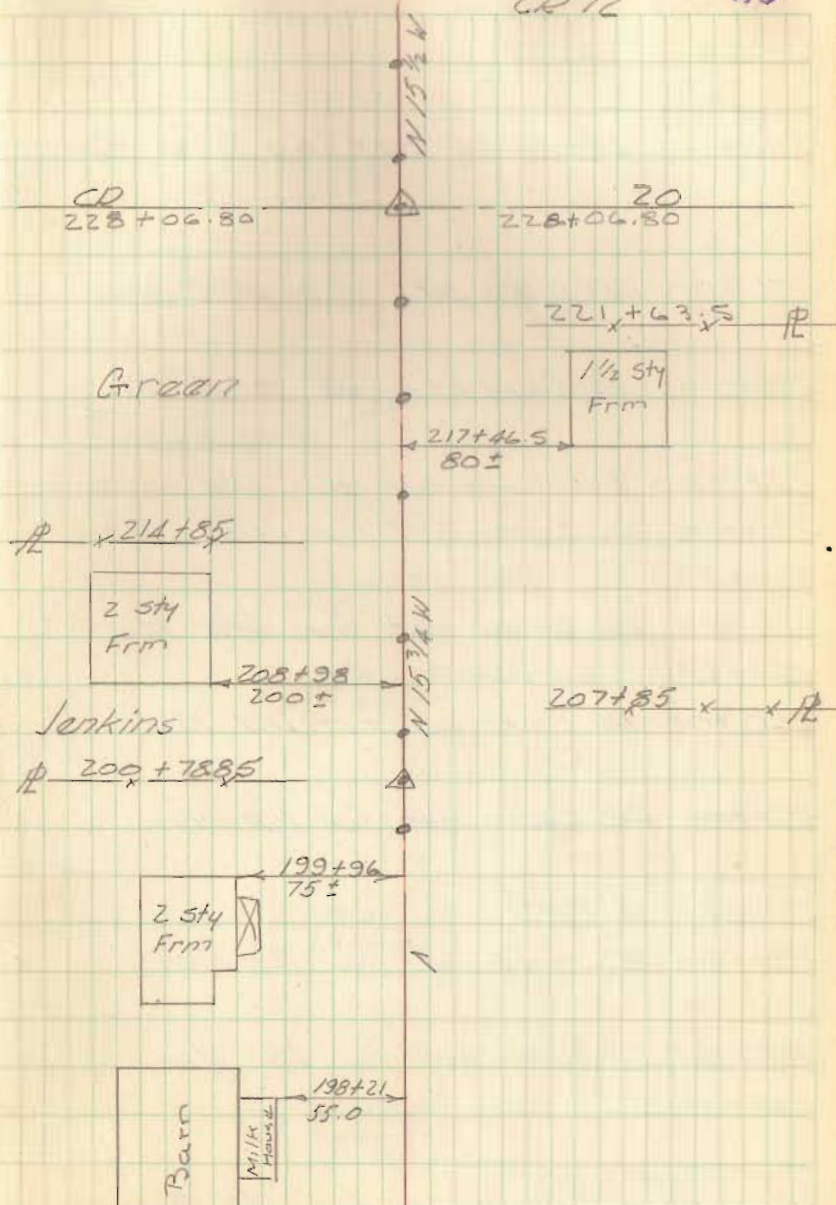
210+00 RR Spike set for R/W Mon

205+00 RR Spike set for R/W Mon

200+78.85 1" # pin set Def. angle  $0^{\circ}22' L$

200+00 RR Spike set for R/W Mon

CR 12



FB 703

285+00 RR Spike set for D/W Mon

280+00 RR Spike set for D/W Mon

276+00 RR Spike set for D/W Mon

274+91.85 RR Spike fd - Def. 0°-14' Rt.

274+00 RR Spike set for D/W Mon

270+00 RR Spike set for D/W Mon

266+35.9 12" CIP

265+00 RR Spike set for D/W Mon

264+78.4 24" CIP

260+00 RR Spike set for D/W Mon.

255+00 RR Spike set for D/W Mon.

251+82.1 15" CMD

250+00 RR Spike set for D/W Mon

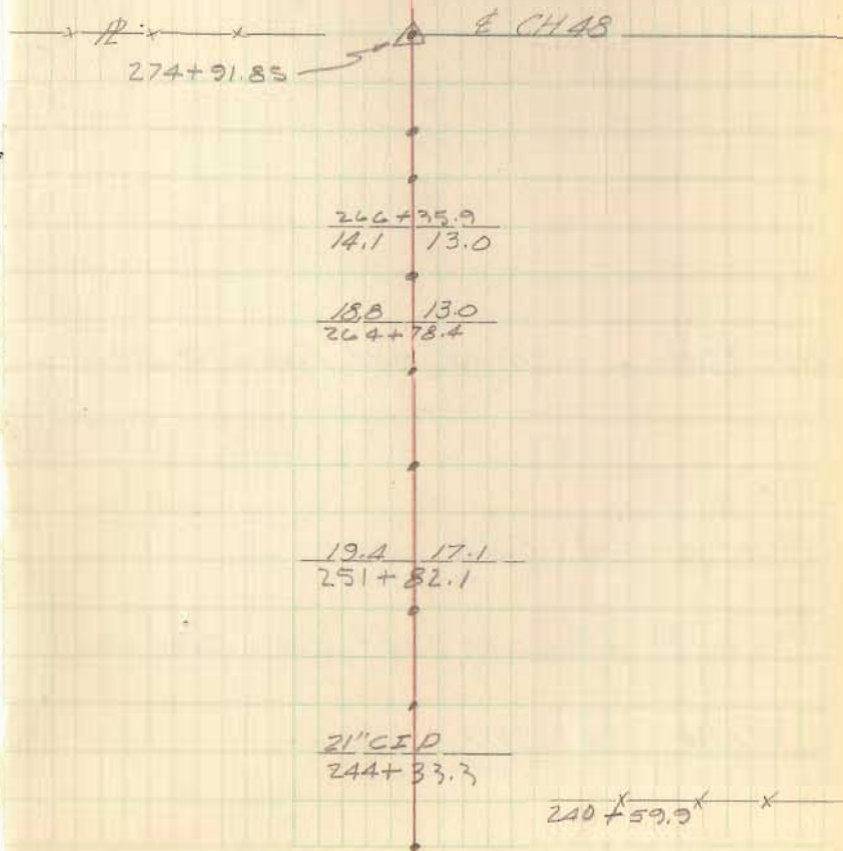
245+00 RR Spike set for D/W Mon

244+33.3

240+00 RR Spike set for D/W Mon.

CR12

36



FB 703

294+11.85 Iron Pin fd

293+00 RD Spike set for R/W Mon

290+14 15" CMP

290+00 RD Spike set for R/W Mon

285+94 24" CMP

CR 12

37

CH 50

sto 294+11.85

N 15' 14" W

18.0 16.0  
290+14

18.1 17.7  
285+94

FB 712

Resurvey part of C.R. 12

22+37.15 - P.I. -  $\frac{5}{8}$ "  $\phi$  iron fd.  
w/mon. box - Intersection  
of C.R. 12 w/ E.T.R. 127  
 $0^{\circ}11'43"$  Et.

Note:

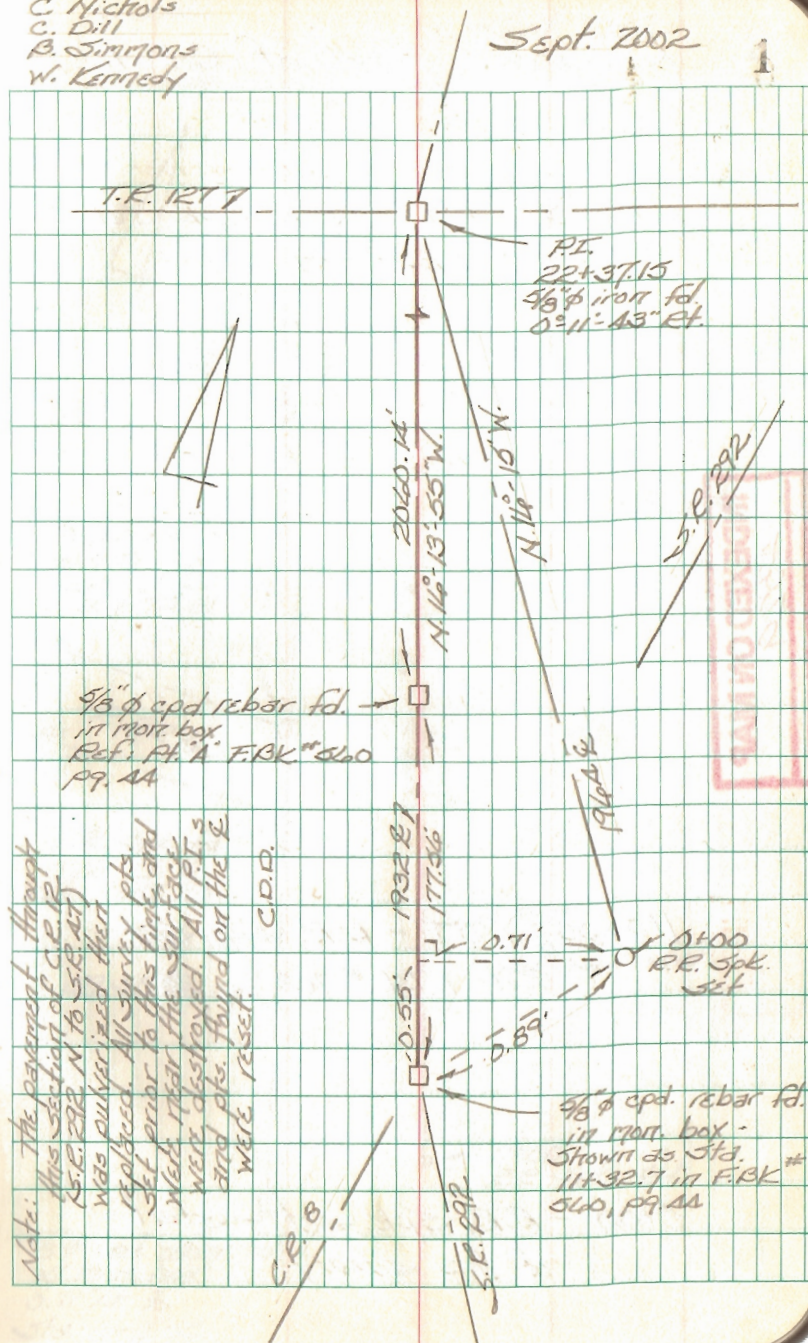
We found all the R.R. Spks. that were set on this tangent in 1964 route survey. They lined up well but missed the  $\frac{5}{8}$ "  $\phi$  cpd. rebar w/mon. box at the S. end. I don't know why. There may have been two pts. here in 1964. We set a R.R. spk. 100.00' from spike found @ Sta. 1+00 on line with the rest of the spikes found - Sta. 0+00.

INDEXED ON MAP  
4829

0+00 - Set R.R. Spk. on E established in 1964 route survey (F.B.K. # 703, pgs. 25 & 26)

C. Nichols  
C. Dill  
B. Simmons  
W. Kennedy

Sept. 2002



Resurvey part of C.R. 12

FB 712

5+00.00 - P.O.T. - R.R. Spk. Set -  
Ref: F.B.K. # 703, pg. 25

INDEXED ON MAP  
4329

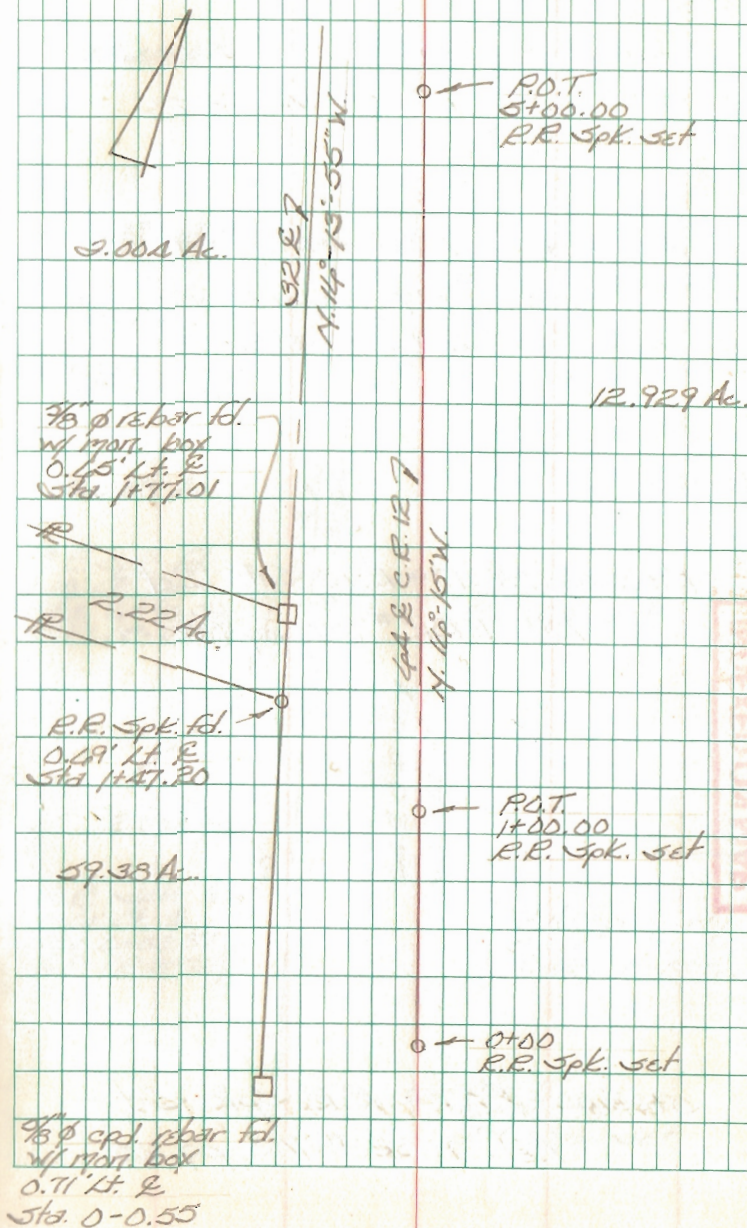
1+00.00 - P.O.T. - R.R. Spk. Set -  
Ref: F.B.K. # 703, pg. 25

0+00 - R.R. Spk. set - start  
of this survey

C. Nichols  
C. Dill  
B. Simmons  
W. Kennedy

Sept. 2002

2



FB 712

Resurvey part of C.R. 12

15+00.00 - P.O.T. - R.R. Spk. Set -

Ref: F.B.K. # 703, pg. 26

13+43.35 - P.O.T. - R.R. Spk. Set -

Ref: 1987 property survey  
Index R-7438

10+00.00 - P.O.T. - R.R. Spk. Set -

Ref: F.B.K. # 703, pg. 25

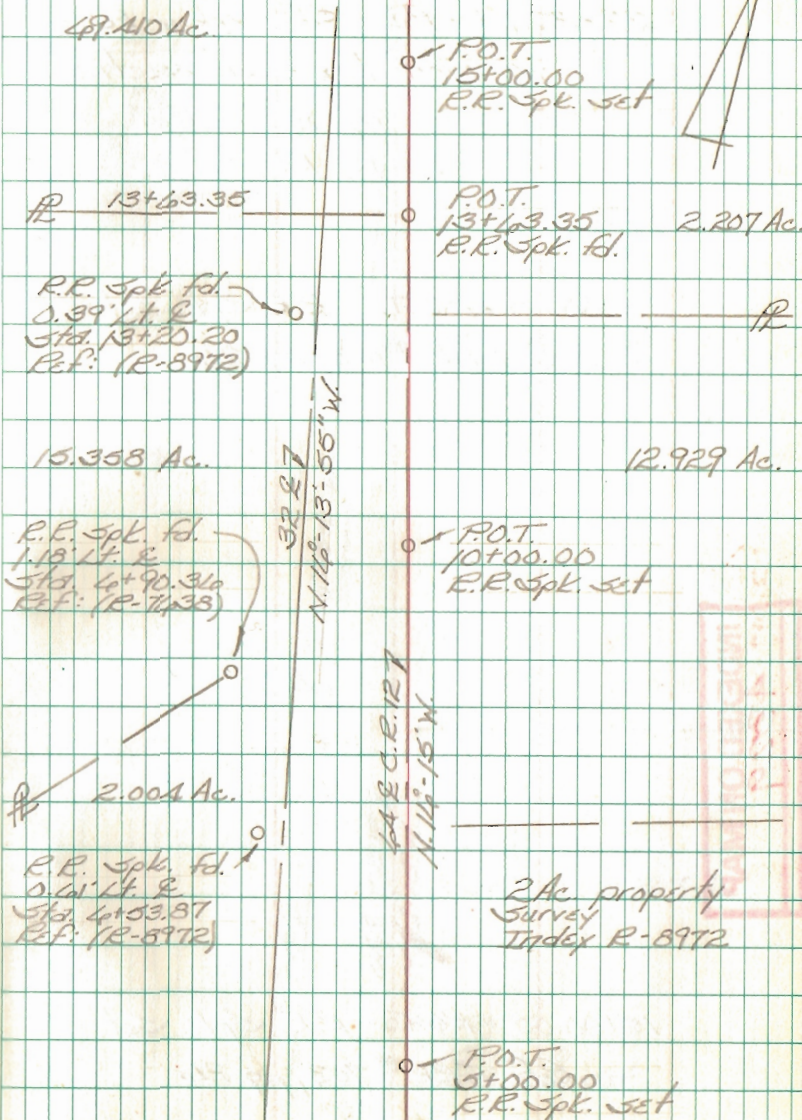
5+00.00 - P.O.T. - R.R. Spk. Set -

Ref: F.B.K. # 703, pg. 25

C. Nichols  
C. Dill  
B. Simmons  
W. Kennedy

Sept. 2002

3

INDEXED ON MAP  
4329INDEXED ON MAP  
4329



FB 712

Resurvey part of C.R. 12

22+37.15 - P.I. -  $\frac{3}{8}$ "  $\phi$  rebar Fd.  
w/ mort. box - Intersection  
& C.R. 12 w/ & T.R. 127  
0°-11'-13" Rt.

20+00.00 - P.O.T. - R.R. Spt. Set -  
Ref: F.B.K. #703, pg. 26

15+00.00 - P.O.T. - R.R. Spt. Set -  
Ref: F.B.K. #703, pg. 26

INDEXED ON MAP  
4329

C. Nichols  
C. Dill  
B. Simmons  
W. Kennedy

Sept. 2002

4

T.R. 1277

T.R. 1277

P.I.  
22+37.15  
 $\frac{3}{8}$ "  $\phi$  rebar Fd.  
w/ Mort. Box  
0°-11'-13" Rt.

3.312 Ac.

P.O.T.  
20+00.00  
R.R. Spt. Set

69.410 Ac.

N 14° 13' 55" W

248 C.R. 127  
N 14° 13' W

2.207 Ac.

P.O.T.  
15+00.00  
R.R. Spt. Set

INDEXED ON MAP  
4329

FB 712

Resurvey part of C.R. 12

40+00.00 - P.O.T. - R.R. Spk. Set  
Ref: F.B.K. # 703, pg. 27

35+00.00 - P.O.T. - R.R. Spk. Set  
Ref: F.B.K. # 703, pg. 27

30+74.94 - P.O.T. - Mag Nail Set

30+00.00 - P.O.T. - R.R. Spk. Set  
Ref: F.B.K. # 703, pg. 26

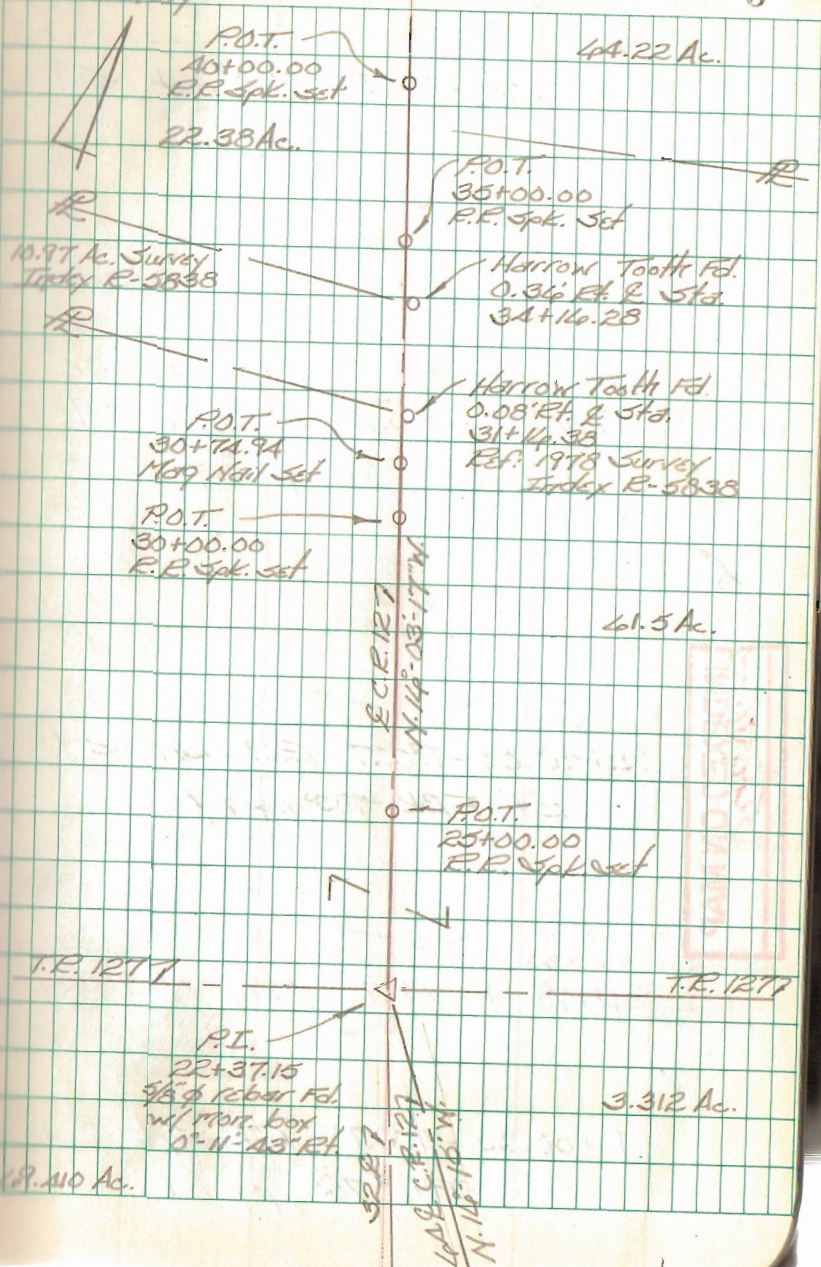
25+00.00 - P.O.T. - R.R. Spk. Set  
Ref: F.B.K. # 703, pg. 26

22+37.15 - P.I. -  $\frac{5}{8}$ "  $\phi$  rebar Fd.  
w/ mort. box - Intersection  
of C.R. 12 w/ E.T.R. 127  
0°-11'-43" Rt.

C. Nichols  
C. Dill  
B. Simmons  
W. Kennedy

Sept. 2002

5



Resurvey part of C.R. 12

FB 712

55+00.00 - P.O.T. - R.R. Spk. Set

Ref: F.B.K. 703, pg 27

50+00.00 - P.O.T. - R.R. Spk. Set

Ref: F.B.K. 703, pg 27

45+00.00 - P.O.T. - R.R. Spk. Set

Ref: F.B.K. 703, pg 27

41+73.19 - P.O.T. - Mag Nail Set

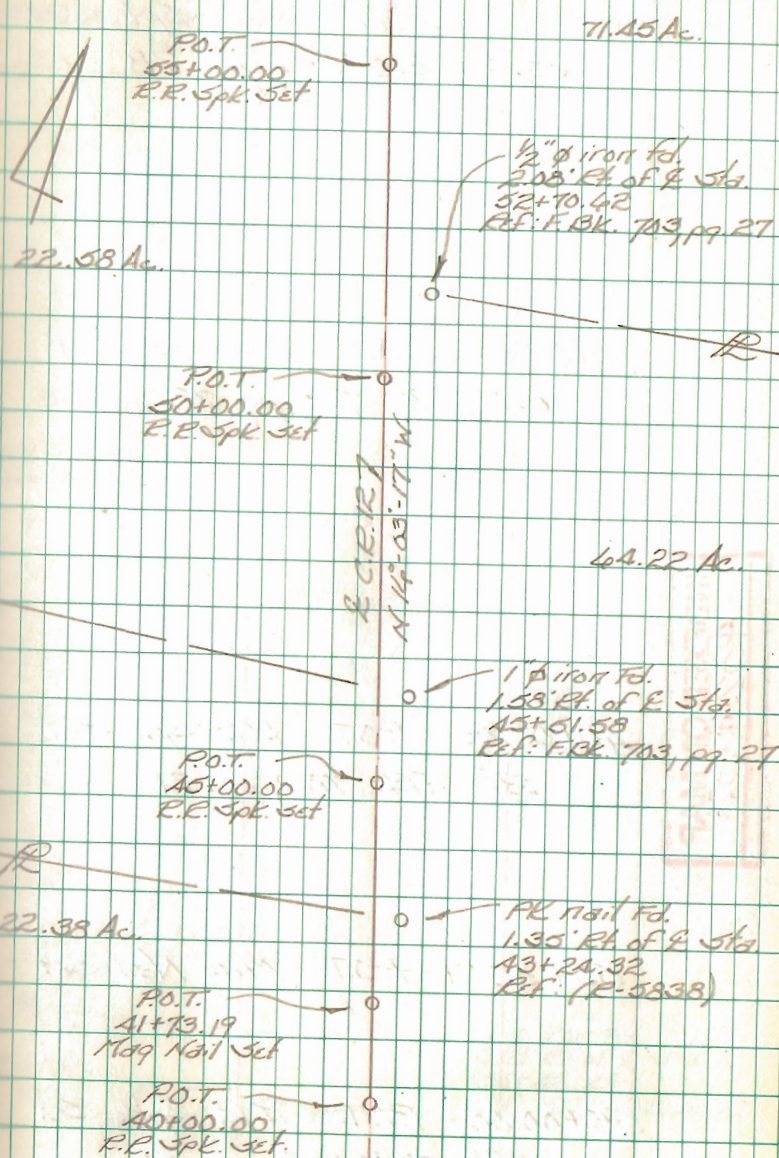
40+00.00 - P.O.T. - R.R. Spk. Set

Ref: F.B.K. #703, pg 27

C. Nichols  
C. Dill  
B. Simmons  
W. Kennedy

Sept. 2002

6



FB 712

Resurvey part of C.R. 12

70+00.00 - P.O.T. - R.R. Spk. Set -

Ref: F.B.K. 703, pg. 28

45+00.00 - P.O.T. - R.R. Spk. Set

Ref: F.B.K. 703, pg. 28

40+00.00 - P.O.T. - R.R. Spk. Set

Ref: F.B.K. 703, pg. 27

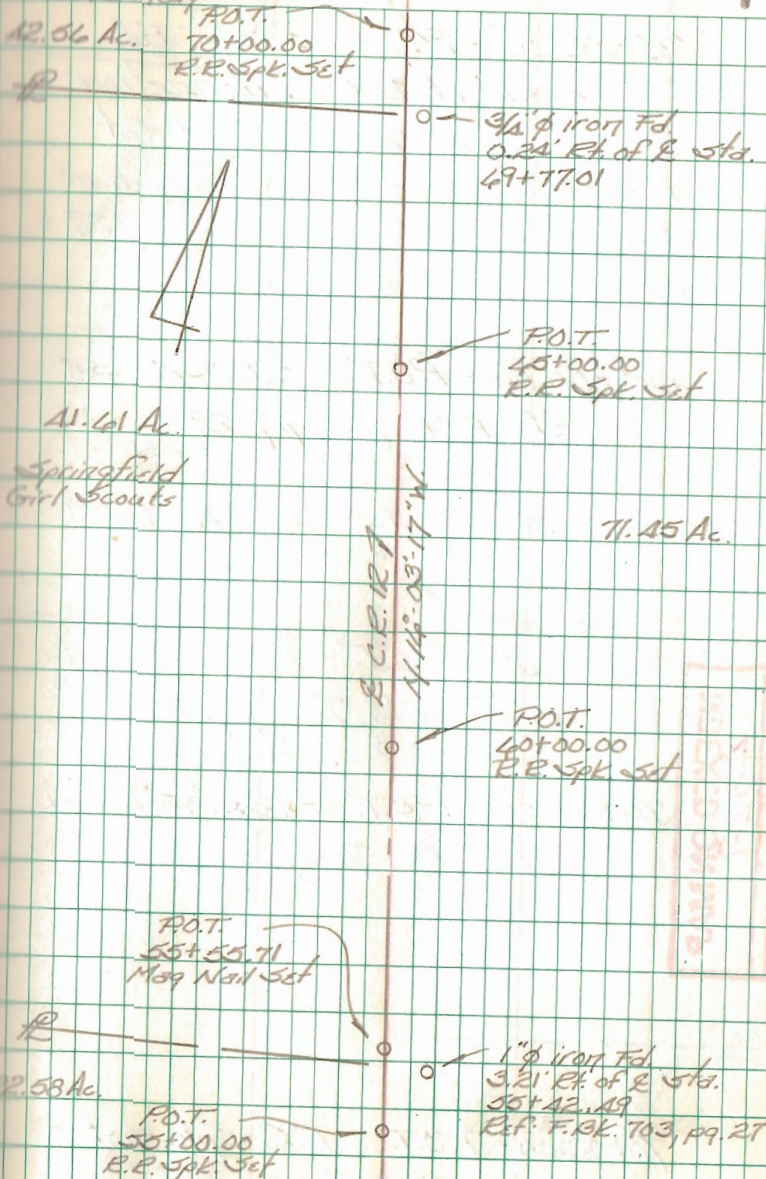
55+55.71 - P.O.T. - Mag Nail Set

55+00.00 - P.O.T. - R.R. Spk. Set

Ref: F.B.K. 703, pg. 27

C. Nichols  
C. Dill  
B. Simmons  
W. Kennedy

Sept. 2002



FB 712

Resurvey part of C.E. 12

85+85.00 - P.I. - Stone Fd.  
in monument box - Intersection  
E S.E. 47 w/ E C.E. 12 - Set  
R.R. Spk. over stone w/ mag nail  
straddles - Ref: F.Bk. 703, pg. 29 -  
End of this survey

85+00.00 - P.O.T. - R.R. Spk. Set -  
Ref: F.Bk. 703, pg. 29

81+90.77 - P.O.T. - Mag Nail Set

80+00.00 - P.O.T. - R.R. Spk. Set -  
Ref: F.Bk. 703, pg. 28

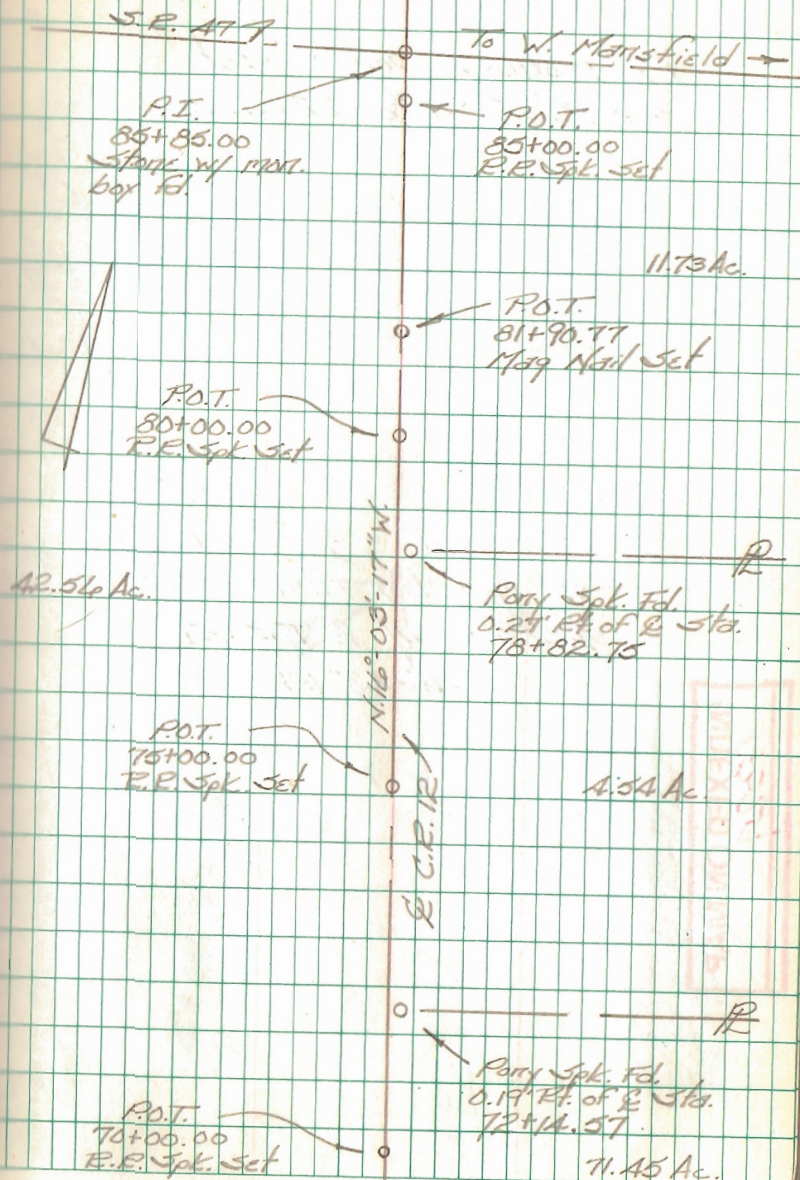
75+00.00 - P.O.T. - R.R. Spk. Set -  
Ref: F.Bk. 703, pg. 28

70+00.00 - P.O.T. - R.R. Spk. Set -  
Ref: F.Bk. 703, pg. 28

C. Nichols  
C. Dill  
B. Simmons  
W. Kennedy

Sept. 2002

8



FB 712

Resurvey part of C.R. 12

Reference points set  
for P.I. @ Sta. 22+37.15

22+37.15 - P.I. -  $\frac{5}{8}$ "  $\phi$  rebar fd.  
w/ mon. box - Intersection  
E C.R. 12 w/ E T.R. 127  
0°-11'-43" Rt.

INDEXED ON MAP  
4329

C. Nichols  
C. Dill  
B. Simmons  
W. Kennedy

Sept. 2002

9

