

Lee Surveying and Mapping Co., Inc.

Land Surveys • Topography • Subdivisions • Construction Layout

117 N. Madriver St.
Bellefontaine OH 43311



Phone: (937) 593-7335
Fax: (937) 593-7444

CRONKLETON 1.113 ACRES

Lying in the Virginia Military Survey 5209, Perry Township Logan County, Ohio

Being out of the Clifford A. Cronkleton, Trustee and Rebecca K. Cronkleton, Trustee original 60.49 acre tract as deeded and described in Official Record 344 Page 329 Parcel I and being more particularly described as follows:

Beginning at a 3/4 inch iron rod found at the intersection of the center-lines of Township Road 132 and County Highway 8.

THENCE, with the center-line of County Highway 8 (60 feet wide), S 65°-30'-00"W, a distance of 903.79 feet to a MAG nail set at the TRUE POINT OF BEGINNING.

THENCE, S 24°-30'-00"E, a distance of 255.00 feet to a 5/8 inch iron rod set, passing a 5/8 iron rod set at a distance of 29.74 feet.

THENCE, S 72°-37'-30"W, a distance of 201.56 feet to a 5/8 inch iron rod set.

THENCE, N 24°-30'-00"W, a distance of 230.00 feet to a MAG nail set, passing a 5/8 iron rod set at 199.97 feet.

THENCE, with the center-line of County Highway 8, N 65°-30'-00"E, a distance of 200.00 feet to the point of beginning.

Containing 1.113 acres, of which 0.138 acre is within the highway right-of-way.

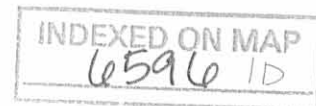
The basis for bearings is the center-line of County Highway 8 being N 65°-30'-00"E, and all other bearings are from angles and distances measured in a field survey by Lee Surveying and Mapping Co., Inc. on November 14, 2003.

Description prepared by:



ORIGINAL STAMP IN GREEN

[Signature]
Jeffrey I. Lee
Professional Surveyor 6359
November 19, 2003



L-2084

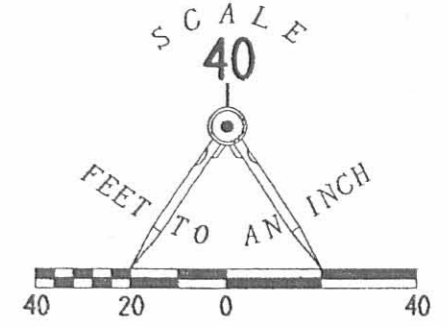
**SURVEY OF 1.113 ACRES
OUT OF THE CLIFFORD A. CRONKLETON, TRUSTEE
AND REBECCA K. CRONKLETON, TRUSTEE
ORIGINAL 60.49 ACRE TRACT
OFFICAL RECORD 344. PAGE 329. PARCEL 1
VIRGINIA MILITARY SURVEY 5209
PERRY TOWNSHIP
LOGAN COUNTY, OHIO**

COUNTY HIGHWAY 8 (60')
N 65° 30' 00" E
200.00'

TOWNSHIP ROAD 132 (60')

1.113 ACRES
OF WHICH 0.138 ACRE
IS IN THE HIGHWAY
RIGHT-OF-WAY

STA. 139+70
LOGAN COUNTY ENGINEER'S
F.B. 560 PG. 49



BASIS FOR BEARINGS
N 65° 30' 00" E.
356.52'

STA. 125+09.40
LOGAN COUNTY ENGINEER'S
F.B. 560. PG. 49

LEGEND

- 5/8 INCH IRON ROD SET
- ⊙ MAG NAIL SET
- 3/4 INCH IRON ROD FOUND

2 WORKING DAYS
BEFORE YOU DIG
CALL TOLL FREE **800-362-2764**
OHIO UTILITIES PROTECTION SERVICE.

INDEXED ON MAP
6594 IP

CLIFFORD A. CRONKLETON, TRUSTEE
ORIGINAL 60.49 ACRES
O.R. 344. PG. 329
PARCEL 1



ORIGINAL STAMP IN GREEN

SURVEYED BY:

Jeffrey I. Lee
JEFFREY I. LEE
PROFESSIONAL SURVEYOR 6359
NOVEMBER 14, 2003

COPYRIGHT 2003 BY:
LEE SURVEYING & MAPPING CO., INC.
117 North Madriver Street
BELLEFONTAINE, OHIO 43311
(937) 593-7335
D411 CCRONK L-2084-3

1 RECID 4-22-98 SMY OK ✓



Lee Surveying and Mapping Co., Inc.



Farm Surveys • Lot Surveys • Topography • Subdivisions • Construction Layout

117 NORTH MADRIVER STREET
BELLEFONTAINE, OHIO 43311

(937) 593-7335
FAX (937) 593-7444

CRONKLETON 2.599 ACRES

Lying in Virginia Military Survey 5209, Perry Township, Logan County, Ohio.

Being out of the Clifford A. Cronkleton, Trustee original 60.49 acre tract as deeded and described in Official Record 344, Page 329, Parcel I, of the Logan County Records of Deeds and being more particularly described as follows:

Beginning at a 3/4 inch iron rod found on the center-line of Township Road 132 at the intersection with the center-line of County Highway 8.

THENCE, with the center-line of Township Road 132, (60 feet wide), S 4°-00'-00" W, a distance of 2061.78 feet to a railroad spike set at the TRUE POINT OF BEGINNING.

THENCE, with the center-line of Township Road 132 and the west line of the Jeffrey Edwin Miller original 34.203 acre tract, (O.R. 165, Pg. 394), S 4°-00'-00" W, a distance of 383.82 feet to a 3/4 inch iron rod found.

THENCE, with the north line of the Huntington National Bank of Columbus 51.0 acre tract, (Vol. 384, Pg. 183), N 86°-38'-33" W, a distance of 464.87 feet to a 5/8 inch iron rod set on the southeasterly bank of a ditch.

THENCE, following the southeasterly bank of a ditch, the following three (3) courses:

N 27°-45'-26" E, a distance of 100.43 feet to a 5/8 inch iron rod set.

N 41°-48'-44" E, a distance of 137.30 feet to a 5/8 inch iron rod set.

N 64°-59'-29" E, a distance of 389.00 feet to the point of beginning, passing a 5/8 inch iron rod set at 354.70 feet.

Containing 2.599 acres, of which, 0.204 acre is within the highway right-of-way.

The basis for bearings is the center-line of Township Road 132, being S 4°-00'-00" W, and all other bearings are from angles and distances measured in a field survey by Lee Surveying and Mapping Co., Inc. on April 14, 1998.



ORIGINAL STAMP IN GREEN

Description prepared by:

Jeffrey I. Lee
Jeffrey I. Lee
Professional Surveyor 6359
April 19, 1998

L-2084

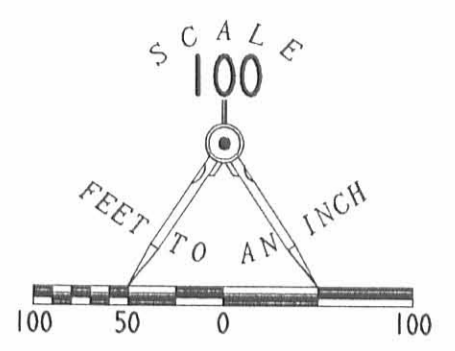
INDEXED ON MAP
6596 2D

COUNTY HIGHWAY 8

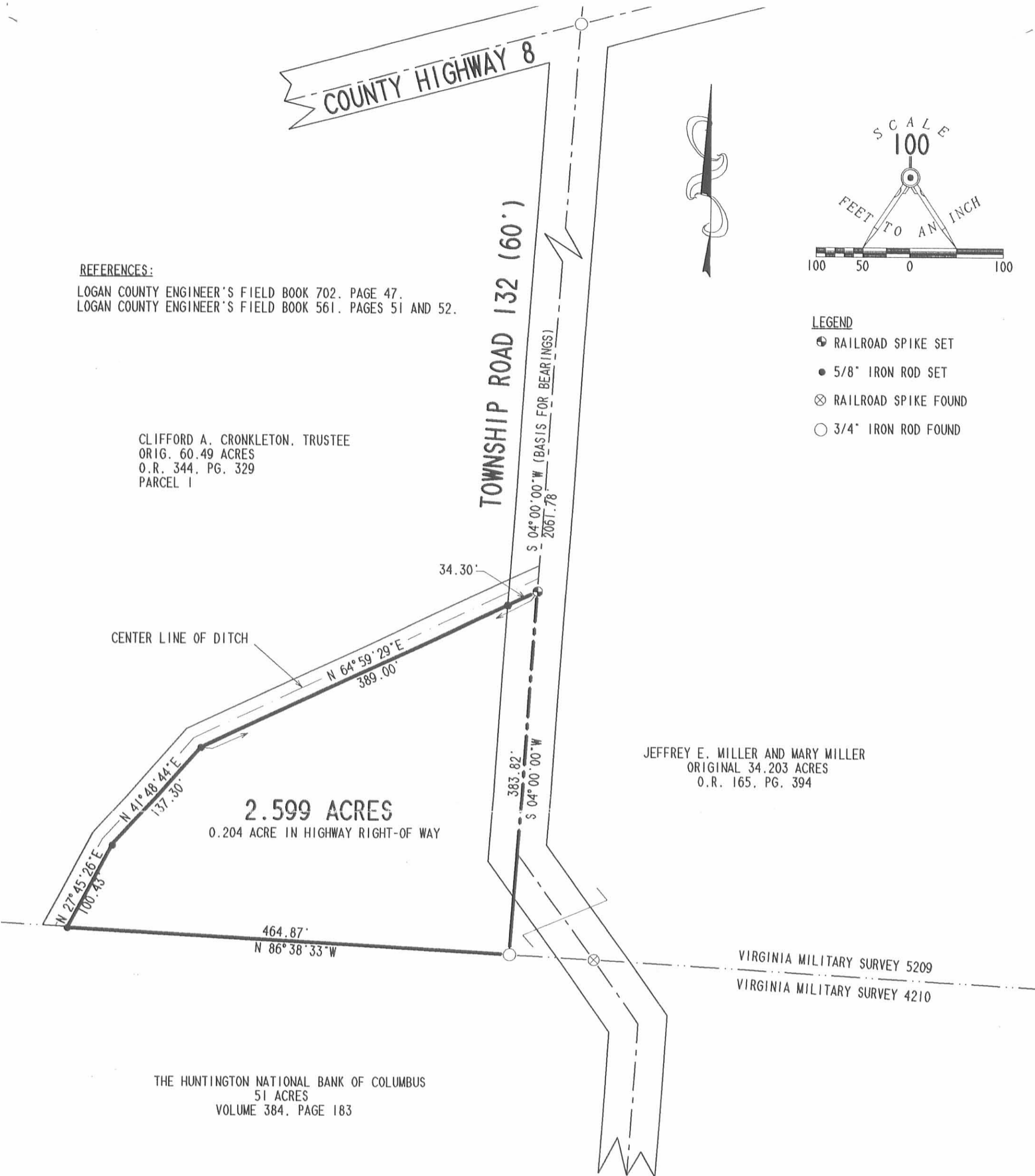
REFERENCES:
 LOGAN COUNTY ENGINEER'S FIELD BOOK 702. PAGE 47.
 LOGAN COUNTY ENGINEER'S FIELD BOOK 561. PAGES 51 AND 52.

CLIFFORD A. CRONKLETON, TRUSTEE
 ORIG. 60.49 ACRES
 O.R. 344, PG. 329
 PARCEL 1

TOWNSHIP ROAD 132 (60')



- LEGEND
- ⊕ RAILROAD SPIKE SET
 - 5/8" IRON ROD SET
 - ⊗ RAILROAD SPIKE FOUND
 - 3/4" IRON ROD FOUND



SURVEY OF 2.599 ACRES OUT OF
 THE CLIFFORD A. CRONKLETON, TRUSTEE
 ORIGINAL 60.49 ACRE TRACT
 OFFICIAL RECORD 344, PAGE 329, PARCEL 1
 VIRGINIA MILITARY SURVEY 5209
 PERRY TOWNSHIP
 LOGAN COUNTY, OHIO



SURVEYED BY:

 JEFFREY I. LEE
 PROFESSIONAL SURVEYOR 6359
 APRIL 14, 1998

COPYRIGHT 1998 BY:
 LEE SURVEYING & MAPPING CO., INC.
 117 North Madriver Street
 BELLEFONTAINE, OHIO 43311
 (937) 593-7335
 D-325 CACCR132 L-2084-3

2 WORKING DAYS
BEFORE YOU DIG
 CALL TOLL FREE **800-362-2764**
 OHIO UTILITIES PROTECTION SERVICE.

INDEXED ON USGS
 6596 2P

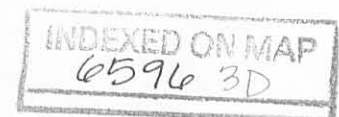
ORIGINAL STAMP IN GREEN

CRONKLETON DESCRIPTION
V.M.S. 5209
PERRY TOWNSHIP
May 6, 1976

The following described real estate situated in Perry Township, Logan County, Ohio and being part of Virginia Military Survey 5209 and more particularly described as follows:

Beginning at the intersection of the centerline of County Highway No. 8 and the centerline of Township Road No. 132; thence with the centerline of said T.R. 132 S.2°W. 146 poles to a point in the south line of said V.M.S. 5209; thence with said survey line N.88°W. 76 poles to a stone at the southeast corner of William R. Hughes' 19.00 acre tract; thence with said Hughes' east line N.2°E. 108.7 poles to a stone in the center of said C.H.No.8; thence with the centerline of said road N.65½°E. 88.5 poles to the place of beginning.

Containing 60.49 acres more or less.



WILLIAM R. HUGHES
19.00 AC.
VOL. 354 PG. 849

MELVIN WATKINS JR.
51.10 AC.
DEED VOL. 229 PG. 135

V.T.C.S. 4-2-10
SURVEY LINE

N. 85° W. 76 POLES

N. 2° E. 108.7 POLES

60.49 AC.

N. 65° E. 88.5 POLES

28.76 AC.

S. 2° W. 146 POLES
T.R. No 132

S. 47° W. 82 POLES

ROBERT W.
STANLEY
20.38
VOL. 194 PG. 270

TOWNSHIP LINE

NOTE:

DESCRIPTION PREPARED

FROM DEEDS.

VOL. 354 PG. 849

VOL. 346 PG. 167

6596 3P

INDEXED ON MAP

CRONKLETON DESCRIPTION

V.M.S. 5209

PERRY TOWNSHIP

LOGAN COUNTY, OHIO

MAY 6, 1976

SCALE 1"=200'

DAN - DODSON
REG SURVEYOR 420
BELLEFONTAINE, O

REC'D 9-8-11 SMY OK

Lee Surveying and Mapping Co., Inc.

Land Surveys • Topography • Subdivisions • Construction Layout

117 N. Madriver St.
Bellefontaine OH 43311



Phone: (937) 593-7335
Fax: (937) 593-7444
surveys@lsminc.us

CRONKLETON TRUSTEE 2.219 ACRES

Lying in Virginia Military Survey 5209, Perry Township, Logan County, Ohio.

Being out of the Clifford A. Cronkleton and Rebecca K. Cronkleton, Trustee 60.49 acre tract as deeded and described in Official Record 344, Page 329 Parcel I of the Logan County Records of Deeds and being more particularly described as follows:

Commencing at a 3/4 iron rod found on the center-line of County Highway 8 (60 feet wide) at station 125+09.40 in the Logan County Engineer's Field Book 560, Page 49.

THENCE, with the center-line of County Highway 8, N 65°-30'-00"E, a distance of 295.42 feet to a MAG nail set at THE TRUE POINT OF BEGINNING.

THENCE, with the center-line of County Highway 8, N 65°-30'-00"E, a distance of 261.10 feet to a MAG nail found.

THENCE, S 24°-30'-00"E, a distance of 255.00 feet to a 5/8 inch iron rod found, passing a 5/8 inch iron rod found at 30.00 feet.

THENCE, S 72°-37'-29"W, a distance of 145.54 feet to a 5/8 inch iron rod set.

THENCE, S 04°-15'-14"E, a distance of 164.00 feet to a 5/8 inch iron rod set.

THENCE, S 83°-09'-12"W, a distance of 178.48 feet to a 5/8 inch iron rod set.

THENCE, N 06°-23'-09"W, a distance of 354.25 feet to the point of beginning, passing a 5/8 inch iron rod set at 322.69 feet

Containing 2.219 acres of which 0.183 acre is within the highway right-of-way.

Property is subject to any and all previous easements and rights-of-way of record.

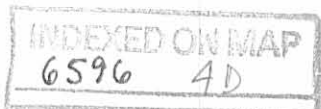
The basis for bearings is center-line of County Highway 8, being N 65°-30'-00"E, and all other bearings are from angles and distances measured in a field survey by Lee Surveying and Mapping Co., Inc. on September 2, 2011.

Description prepared by:

William K. Bruce
Professional Surveyor 7437
September 2, 2011
Revised September 8, 2011



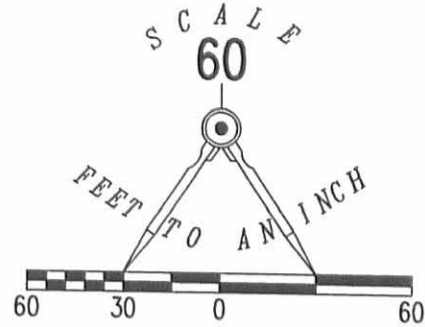
52030411B



REC'D 9-8-11 SMM/OL

LEGEND

- 5/8 INCH IRON ROD SET WITH PLASTIC I.D. CAP STAMPED "LSM 7347"
- 5/8 INCH IRON ROD FOUND
- MAG NAIL SET
- MAG NAIL FOUND
- ⊗ 3/4 INCH IRON ROD FOUND



COUNTY HIGHWAY 8 (60')

BASIS FOR BEARINGS
N 65°30'00" E
261.10'

STATION 125+9.40
LOGAN COUNTY ENGINEER'S
FIELD BOOK 560, PAGE 49

2.219 ACRES
OF WHICH 0.183 ACRE IS WITHIN THE
HIGHWAY RIGHT-OF-WAY.

THE CLIFFORD A. CRONKLETON AND
REBECCA K. CRONKLETON, TRUSTEE
60.49 ACRE TRACT
OFFICIAL RECORD 344, PAGE 329
PARCEL 1

SURVEY OF A 2.219 ACRE TRACT OUT OF
THE CLIFFORD A. CRONKLETON AND
REBECCA K. CRONKLETON, TRUSTEE
60.49 ACRE TRACT
OFFICIAL RECORD 344, PAGE 329
PARCEL 1
VIRGINIA MILITARY SURVEY 5209
PERRY TOWNSHIP
LOGAN COUNTY, OHIO

SURVEYED BY:

William K. Bruce

WILLIAM K. BRUCE
PROFESSIONAL SURVEYOR 7437
SEPTEMBER 2, 2011



COPYRIGHT 2011 BY:
LEE SURVEYING & MAPPING CO., INC.
117 North Madriver Street
BELLEFONTAINE, OHIO 43311
(937) 593-7335
surveys@lsminc.us

2 WORKING DAYS
BEFORE YOU DIG
CALL TOLL FREE **800-362-2764**
OHIO UTILITIES PROTECTION SERVICE.

INDEXED ON MAP
6596 4P

ORIGINAL STAMP IN GREEN

ADW D0811 52030411B L-5203-3