

Received 6-22-87

Lee Surveying and Mapping Co.



Farm Surveys • Lot Surveys • Topography • Subdivisions • Construction Layout

855 EAST SANDUSKY AVENUE
BELLEFONTAINE, OHIO 43311

(513) 593-5780

CLAYTON M. LEE, P.S.
JEFFREY I. LEE, P.S.

SEILING SURVEY (5.00 ACRES)

Lying in V.M.S. 13557, Perry Township, Logan County, Ohio.

Being out of that 63.39 acre tract in the name of Evalyn Bowsher as deeded and described in Volume O. R. 42, Page 984 of the Logan County Records of Deeds and being more particularly described as follows:

Beginning at a railroad spike set on the center-line of County Road 2, being N 55°-00' W, a distance of 334.42 feet, with said center-line, from the northeast property corner of said 63.39 acre tract.

THENCE, into the said 63.39 acre tract, S 17°-47'-25" W, a distance of 333.92 feet to a 5/8" iron rod.

THENCE, S 37°-56'-30" W, a distance of 46.32 feet to a 5/8" iron rod.

THENCE, S 56°-44'-50" W, a distance of 27.85 feet to a 5/8" iron rod.

THENCE, S 12°-24'-50" W, a distance of 551.45 feet to a 5/8" iron rod.

THENCE, S 76°-39' W, a distance of 327.00 feet to a 5/8" iron rod.

THENCE, N 22°-39'-10" E, a distance of 1171.70 feet to a railroad spike set on the center-line of county Road 2, passing 5/8" iron rods set at 715.67 feet and 1146.11 feet.

THENCE, with the said road center-line, S 55°-00' E, a distance of 169.97 feet to the point of beginning.

Containing 5.00 acres.

This description prepared from an actual field survey.
Basis for bearings: Center-line County Road 2 (S 55°-00' E).

Prepared by:

Clayton M. Lee
Registered Professional Surveyor No. 6181
June 11, 1987



ORIGINAL STAMP IN GREEN

INDEXED ON MAP
7636 1D

FOUND IRON E.T.R. 132

CO. R. D. 2 (S. 50' R. 2)

BASIS (FROM PREVIOUS SURVEY)



SCALE ~ 1" = 100'

X = RR SPIKE SET
● = 5/8" IRON ROD SET

EVALYN BOWSHER, PT. 63, 39 AC
(O.R. 42, PG. 984, TR. 2)

(58.39 AC. REMAIN)

P.O.B.

334 N 55° 00' W
42.42'

S 17° 47' 25" W
333.92'

EVALYN BOWSHER
VOL. O.R. 42, PG. 984

PROP. LINE 363497.44
RAIL CO. FB. 579, PG. 73
VOL. 402, PG. 986 (TR. 2)

N 22° 39' 10" E, 1171.70'

5.00 ACRES

S 37° 54' 30" W
46.32'

S 56° 44' 50" W
27.85'

S 12° 24' 50" W
551.45'

S 76° 39' W
327.00'

SURVEY OF 5.00 ACRES
V.M.S. 13557
PERRY TOWNSHIP,
LOGAN COUNTY, OHIO

By:
JEFFREY I. LEE
REG. SURVEYOR 6359
JUNE 11 1987
REGISTERED SURVEYOR

ORIGINAL STAMP IN GREEN

INDEXED ON MAP
7636 1P

L-1591-4

11-7-14

Lee Surveying and Mapping Co., Inc.



Land Surveys • Topography • Subdivisions • Construction Layout

117 N. Madriver St.
Bellefontaine OH 43311



Phone: (937) 593-7335
Fax: (937) 593-7444
surveys@lsmine.us

SEILING, TRUSTEE 57.277 ACRES

Lying in Virginia Military Survey 12103-13528-13557-13558, Perry Township, Logan County, Ohio.

Being all of the John Y. Seiling, Trustee, 58.39 acre tract as deeded and described in Official Record 47, Page 754, Tract 2 of the Logan County Records of Deeds and being more particularly described as follows:

Commencing on a 5/8 inch iron rod found on the north line of Virginia Military Survey 12103 on the center-line of County Highway 2 on Station 361 + 27.5 (Logan County Engineer's Field Book 579, Pg. 73).

THENCE, with the north line of Virginia Military Survey 12103 and the center-line of County Highway 2 (50 feet wide), N 54°-36'-07"W, a distance of 269.94 feet to a MAG nail set at the TRUE POINT OF BEGINNING.

THENCE, with the west line of the Regina J. Brill and Gary L. Brill, Trustees 100 acre tract (O.R. 1074, Pg. 737), S 13°-18'-20"W, a distance of 1986.90 feet to a 6 inch wood post found, passing 5/8 inch iron rods set at 26.98 feet and 1986.66 feet.

THENCE, with the north line of the Dorothy A. Neill, Trustee 51.61 acre tract (O.R. 418, Pg. 762, first description), N 82°-56'-34"W, a distance of 1146.55 feet to a 5/8 inch iron rod set.

THENCE, with the east line of the Dorothy A. Neill, Trustee 28.60 acre tract (O.R. 418, Pg. 762, second description), N 09°-56'-46"E, a distance of 2004.75 feet to a 5/8 inch iron rod set.

THENCE, with the east lines of the said 28.60 acre tract and the Dorothy A. Neill, Trustee 17.4 acre tract (O.R. 418, Pg. 762, third description), N 37°-18'-26"E, a distance of 571.81 feet to a MAG nail set on the north line of Virginia Military Survey 12103 and the center-line of County Highway 2, passing a 5/8 inch iron rod set at 546.79 feet.

THENCE, with the north line of Virginia Military Survey 12103 and the center-line of County Highway 2, S 54°-56'-34"E, a distance of 599.42 feet to a point.

THENCE, with the lines of the Michael P. Lyons 5.00 acre tract (O.R. 111, Pg. 40), the following six courses:

S 22°-51'-28"W, a distance of 1174.30 feet to a 5/8 inch iron rod found, passing a railroad spike found at 2.67 feet and a 5/8 inch iron rod found at 28.17 feet.

N 76°-54'-06"E, a distance of 327.00 feet to a 5/8 inch iron rod found.

N 12°-36'-32"E, a distance of 551.67 feet to a 5/8 inch iron rod found.

N 57°-13'-24"E, a distance of 28.00 feet to a 5/8 inch iron rod found.

N 37°-51'-05"E, a distance of 46.12 feet to a 5/8 inch iron rod found.

Lee Surveying and Mapping Co., Inc.

Land Surveys • Topography • Subdivisions • Construction Layout

117 N. Madriver St.
Bellefontaine OH 43311



Phone: (937) 593-7335
Fax: (937) 593-7444
surveys@lsminc.us

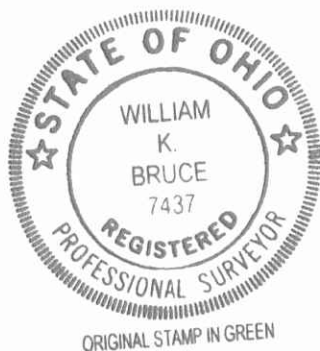
N $17^{\circ}-59'-29''$ E, a distance of 336.17 feet to a point on the north line of Virginia Military Survey 12103 and the center-line of County Highway 2, passing a railroad spike found at 333.85 feet. Said point is referenced by a 5/8 inch iron rod found bearing S $17^{\circ}-10'-31''$ W, a distance of 28.63 feet.

THENCE, with the north line of Virginia Military Survey 12103 and the center-line of County Highway 2, S $54^{\circ}-36'-07''$ E, a distance of 335.14 feet to the point of beginning.

Containing 57.277 acres, of which 0.539 acre is within the highway right-of-way.

Property is subject to any and all previous easements and rights-of-way of record.

The basis for bearings is the center-line of County Highway 2 between Station 361 + 27.5 and Station 353 + 62.5, being N $54^{\circ}-36'-07''$ W, and all other bearings are from angles and distances measured in a field survey by Lee Surveying and Mapping Co., Inc. on November 4, 2014.

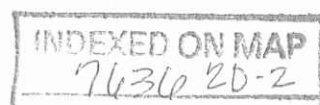


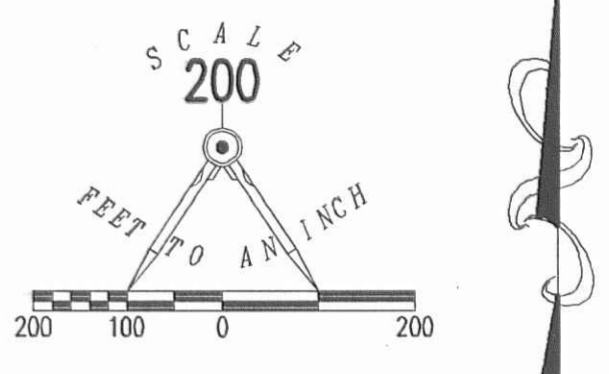
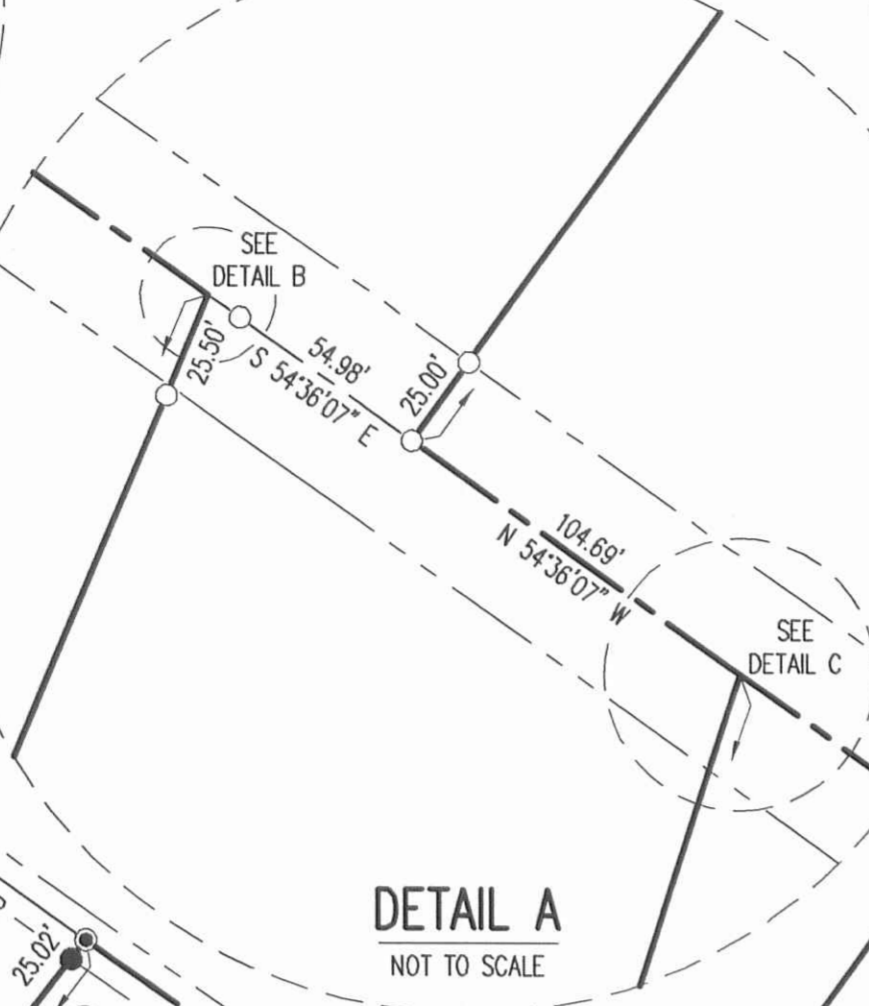
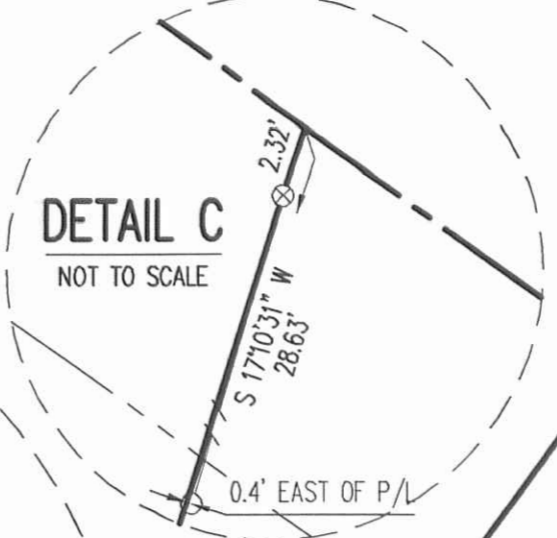
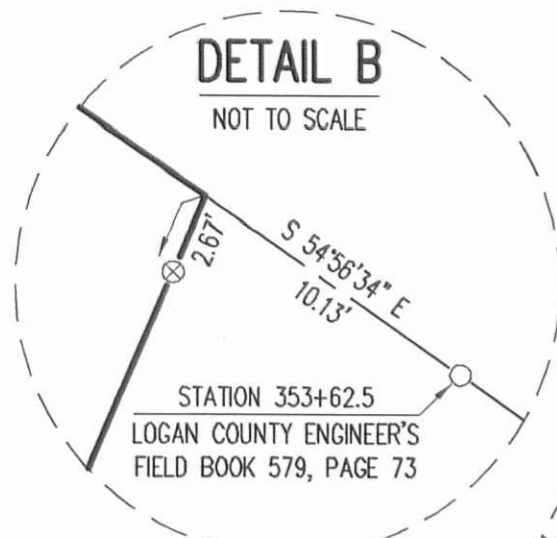
Description prepared by:

William K. Bruce

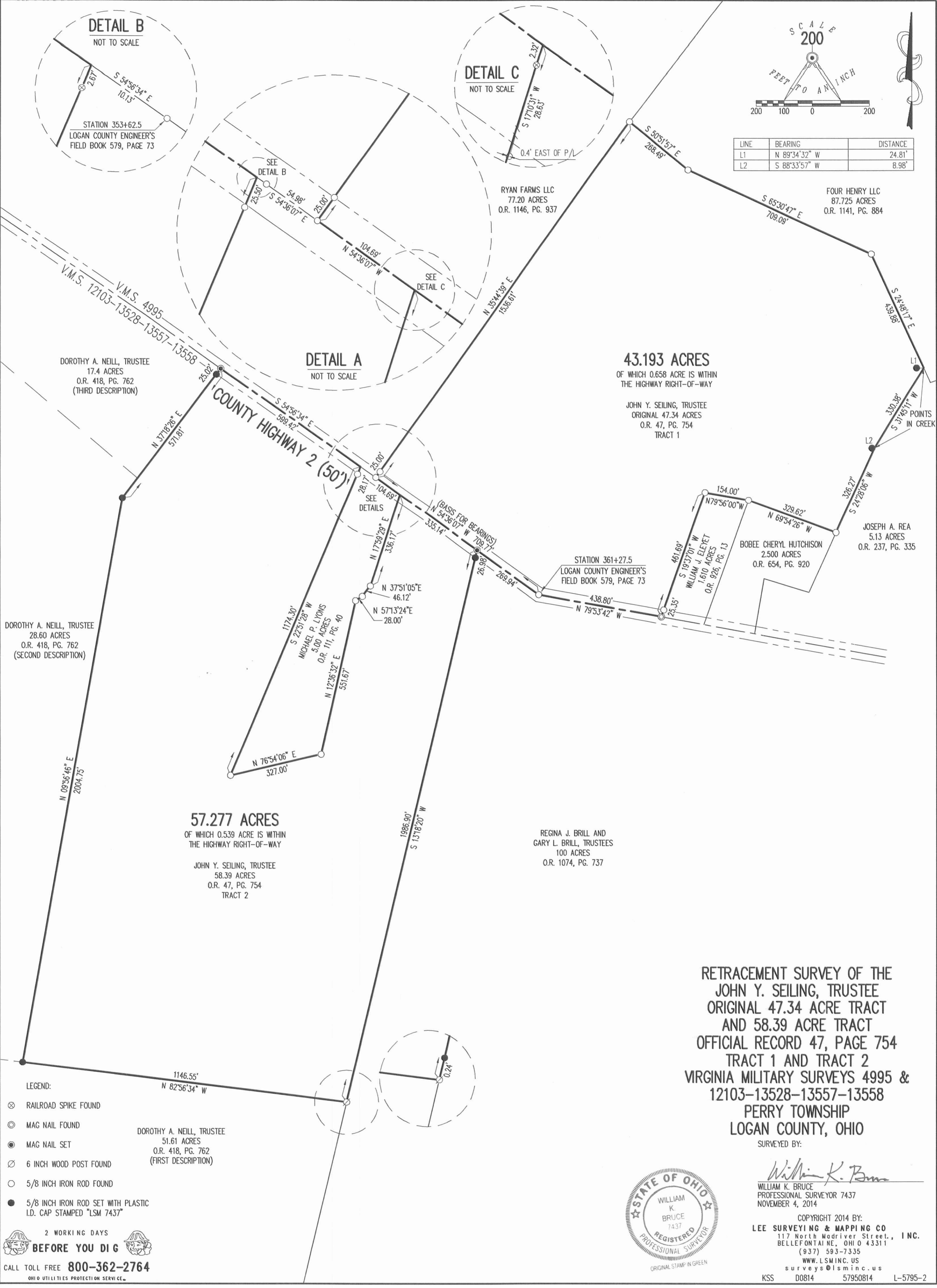
William K. Bruce
Professional Surveyor 7437
November 5, 2014

57950814





LINE	BEARING	DISTANCE
L1	N 89°34'32\" W	24.81'
L2	S 88°33'57\" W	8.98'



43.193 ACRES
 OF WHICH 0.658 ACRE IS WITHIN
 THE HIGHWAY RIGHT-OF-WAY

JOHN Y. SEILING, TRUSTEE
 ORIGINAL 47.34 ACRES
 O.R. 47, PG. 754
 TRACT 1

57.277 ACRES
 OF WHICH 0.539 ACRE IS WITHIN
 THE HIGHWAY RIGHT-OF-WAY

JOHN Y. SEILING, TRUSTEE
 58.39 ACRES
 O.R. 47, PG. 754
 TRACT 2

REGINA J. BRILL AND
 GARY L. BRILL, TRUSTEES
 100 ACRES
 O.R. 1074, PG. 737

**RETRACEMENT SURVEY OF THE
 JOHN Y. SEILING, TRUSTEE
 ORIGINAL 47.34 ACRE TRACT
 AND 58.39 ACRE TRACT
 OFFICIAL RECORD 47, PAGE 754
 TRACT 1 AND TRACT 2
 VIRGINIA MILITARY SURVEYS 4995 &
 12103-13528-13557-13558
 PERRY TOWNSHIP
 LOGAN COUNTY, OHIO**

SURVEYED BY:

 WILLIAM K. BRUCE
 PROFESSIONAL SURVEYOR 7437
 NOVEMBER 4, 2014



COPYRIGHT 2014 BY:
LEE SURVEYING & MAPPING CO.
 117 North Madriver Street, INC.
 BELLEFONTAINE, OHIO 43311
 (937) 593-7335
 WWW.LSMINC.US
 surveys@lsminc.us
 KSS D0814 57950814 L-5795-2

- LEGEND:
- ⊗ RAILROAD SPIKE FOUND
 - ⊙ MAG NAIL FOUND
 - MAG NAIL SET
 - ⊘ 6 INCH WOOD POST FOUND
 - 5/8 INCH IRON ROD FOUND
 - 5/8 INCH IRON ROD SET WITH PLASTIC I.D. CAP STAMPED "LSM 7437"
- DOROTHY A. NEILL, TRUSTEE
 51.61 ACRES
 O.R. 418, PG. 762
 (FIRST DESCRIPTION)
- 2 WORKING DAYS
BEFORE YOU DIG
- CALL TOLL FREE **800-362-2764**
 OHIO UTILITIES PROTECTION SERVICE

INDEXED ON MAP
 7636 2P