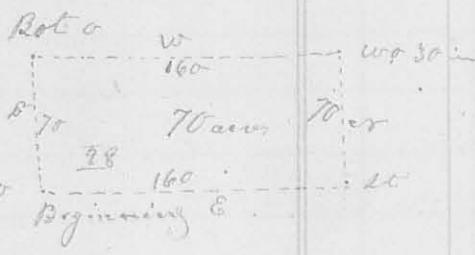


2<sup>nd</sup> Mo. (Feb.) 8<sup>th</sup> 1824

Survey No. 28

8176

Surveyed for Benjn. Schooler, beginning at the South west corner of the S.W. qr. of sec. 31 Town 3 Range 14 (E. 12<sup>th</sup>) a white oak 26 inches in diam. S 45° E 10 links dist. thence east 160 poles to a stake in the prairie at the centre of said sec. thence N 70° W 70 poles to a white oak 30 inches in diam. S 70° E 10 links dist. thence west 160 poles to a bot. oak 12 inches in diam. N 49° E 16 links dist; thence



with the west line of said sec. 70 poles to the beginning containing 70 acres, the South side of the S.W. qr of said Section

Williams Basis }  
 John Schooler } 66

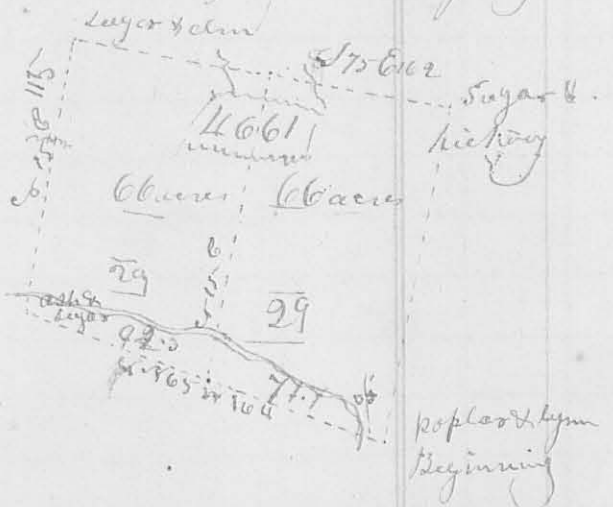
J. W. Williamson  
 Surveyor of L. C.

8178

4<sup>th</sup> Mo. 10<sup>th</sup> 1824

Survey No. 29

Surveyed and divided 132 acres for Edmund & David Chapman beginning at a poplar and Lym the South east corner to Thomas Shwatts Survey No. 661 on the waters of Millad River thence N 65° E W (one fourth of a degree westerly variation from the original line (crossing a small branch at 44 poles, one at 146 poles) 164 poles to an ash and Sugar tree (here I marked a Hickory; thence N 13° E (crossing a branch at 12 poles, one at 64 poles) 115 poles to a Sugar tree & elm thence S 75° E (having westerly variation from the original line crossing a branch at 70 poles, one at 88 poles) 162 poles to a Sugar tree and Hickory; thence N 15° W 140 poles to the beginning containing 132 acres in the S.E. corner of said Shwatts said Survey - The partition line begins at a Lym back of Sugar tree in the South line of this Survey



71.7 poles from the South east corner; thence N 15° E (crossing a branch at 20 poles) 136 poles to 2 beeches & small sugar trees in the north line, dividing the survey into 2 equal parts of 66 acres  
 William & Christopher Smith  
 J. W. Williamson S. C.