

8th mo. (Aug) 17th 1830

Surveyor

8197

Surveyed 200 acres of land for

Nancy McCulloch and Wm. McCulloch's heirs, beginning at a stone and buck near a red oak stump, the southwest corner of James Calderwood's survey no 3137 and north west corner to Calderwood's survey no 3138 thence with the original line between said surveys S 75 1/2 E 1/2 westerly variation (crossing a branch at 62 poles, a road at 160 poles, 223 poles to two Hickories and bur oak in said line; thence S 14 1/2 W (crossing Mad River several times, 158 poles to a stake in a prairie in the north line of James Daugherty's land; thence with said N 75 1/2 W crossing the road 183 poles to a stake



in the west line of Calderwood's survey no 3138 at W corner to Daugherty and in a baring ground; thence with said line, north 162 poles to the beginning - in the north west corner of Calderwood's

Surveyor no 3138 -
 Robert Mearns }
 & Martin Mearns }

J. M. Mearns
 C. C. L. C.

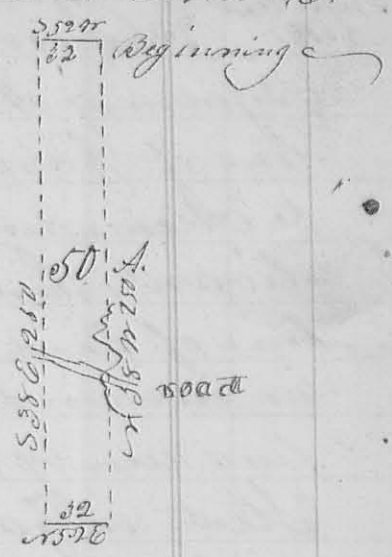
3248

8th mo. (Aug) 23rd 1830

Surveyor no 145

Surveyed 5 acres of land for Herbert Baird Beginning at a stake in the west line of John Baird's Survey no 5875 and 2 poles S 52 W from a sugar tree ironwood and ash N.E. corner to Levelling Jones's Survey no 4655 I marked a small ironwood and buck; thence with the north line of Jones's survey S 52 W 32 poles to 2 small sugar trees and buck - thence S 38 E 250 poles (crossing the road from Jamesfield to Garwood mill and two small branches) to 2 bucks and 2 small sugar trees in the south line of Jones's Survey; thence with said line

line or 52^o 32 poles to a stake in said line at the S.E. corner of the original survey; thence N 38^o W, crossing a spring branch several times and the road) 250 poles to the beginning, containing fifty acres off the east end of Jones' said Survey -
 Lewis Sullivan }
 Levi Garwood jr. } W. Ja. M. Warron
 C. S. L. Co.



9th mo (Sept) 5th 1831

Survey No. 146

Surveyed 196³/₄ acres for Alexander Long, (8299)
 Beginning at a stake & small ash bushes and sugar tree in the west line of James Calderwoods survey No. 3137 153³/₄ poles northerly from the south west corner of said survey, and at the north corner of land deced by Lucas Sullivan to William Jane; thence with said line N 75^o E, crossing the road from Bellefontaine to Jamesfield at 10 poles a branch at 20 poles, 76.7 poles to a stake and beech in said line, south west corner of land conveyed by said Sullivan to Ebenezer Jane and N.W. corner of land conveyed by said Sullivan to Alex. Long; thence S 75^o E, crossing Sandusky street in Jamesfield at 205 poles, cross Mad river at 286 poles, 410 poles to a stone beech and dog wood in the east line of the original survey, N.E. corner to Alex. Long, and S.E. corner to E Jane; thence with said line S 75^o W 76.7 poles to a stake small Hickory and beech in said line, corner between Alex. Long and Wm Jane -
 - thence

Lewen A Long
 & L. Curtis



N 75^o W, crossing the road from Jamesfield to Melford at 65 poles, Mad river at 134, Spring branch at 198, the road to Urbana at 248 poles, 410 poles to the beginning containing 196³/₄ acres of the original Survey No. 3137

Robert R. Warron } W. Ja. M. Warron
 & John Jane } C. S. L. Co.