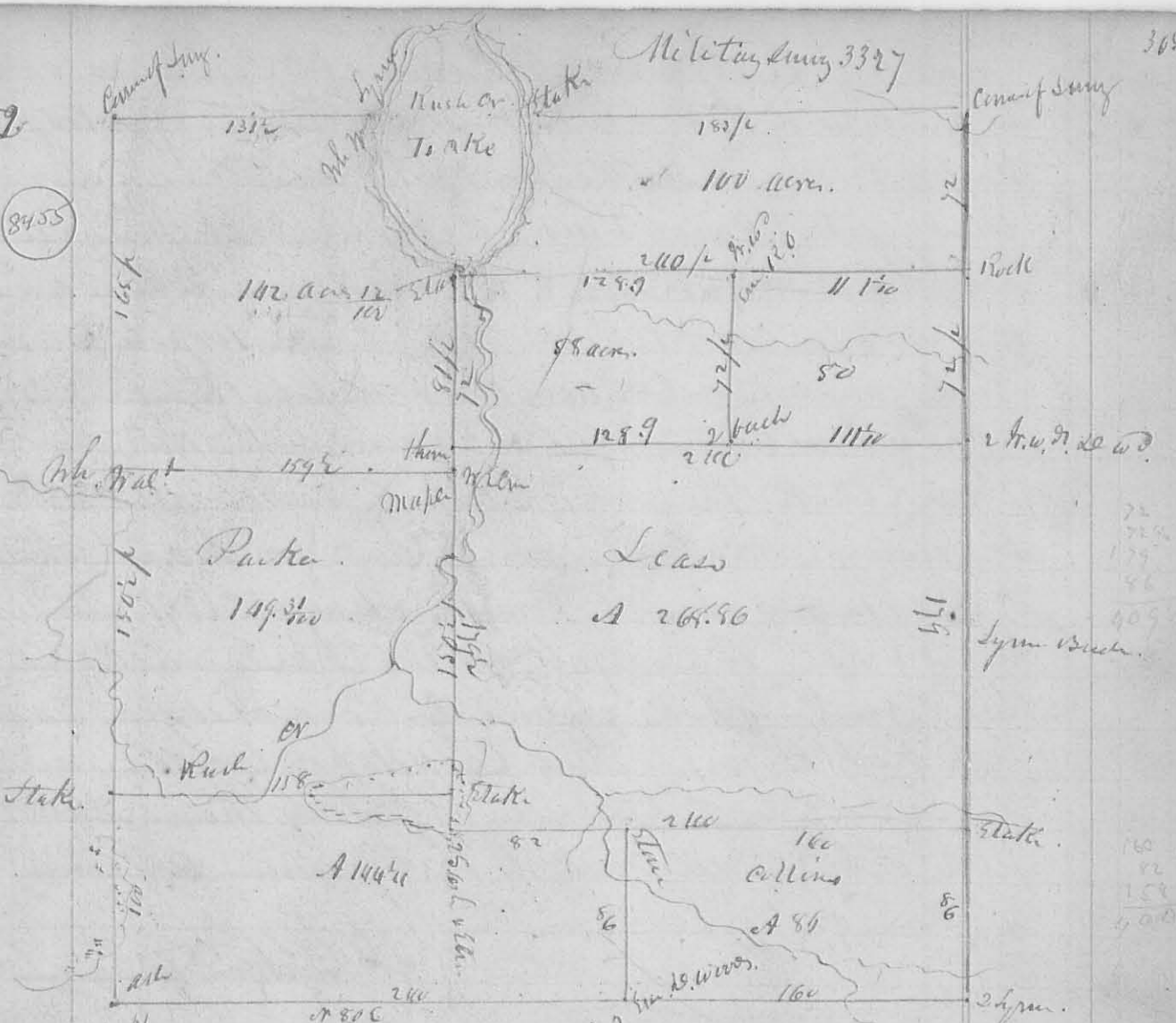


452

305

Military Survey 3327

8455



The foregoing survey was made for R. Canby May 29. 1839. present bearing of the line N 11 1/2 W. as apt. south boundary. the line run at right angle - with the general course as the line  
 L. Hopkins, Coles & C. O

453

8456

Mass. Elliot

Survey from 4. 1839 for John B. Wilcox part of Survey of 3291. then from Hickory cut. then S 2 1/4 W 124 1/2 poles to a Stone; N. Wood B. Geo. Elm & N. Beach. then S 89 1/2 W 163 poles, crossing Big rock to a Stone at a Buck & Logwood. then S N 2 E 116 poles, crossing a run to a Stone in N. line of said Survey. then with said line N 87 1/4 E 163 poles to the begin. Mine containing 122 acres. Also Survey for Metz, Elli. other part of same Survey as follows. Beginning at a Stone in the West bank of a run at an Ironwood & 2 Buck, with the N. line of the Survey, and course to N. 45 W. then S 1/2 W 192 poles, crossing a branch at 2 poles and at 68, 146 - 160 poles to 2 Buck & N. O. new Stone. then S 89 1/2 E 160 poles, crossing a creek to a Stone & 2 Buck, near a small drain. then S 1/2 E 204 poles

304

Young  
Elliott

passing Robinson SW Corner at 85 1/2 p (12 ac & 20 w<sup>d</sup>)  
to a stem in the N Lim of the Survey: thence S 87 1/2 W 160 p to  
the beginning. Containing 196 <sup>96</sup>/<sub>100</sub> ac.

and part of same Survey. Beginning as at Mosey Elliotts.  
Lot. thence N 87 1/2 E 80 p to a stake from which a hedge  
12 l. d. bears S 34 W 56 Links: thence South 100 p to a stem  
North from a Red Sugar about 100 p to a stem S 87 1/2 W  
80 p to a stem Red & Ironwood in the West line of  
Mosey Elliott: thence N 1/2 E 80 p to the  
beginning Containing 5 ac. And for Isaac Johnson.

Beginning at N E Corner of Survey N<sup>o</sup> 5091. Stem. Spruce  
hickory & Ash. thence S 87 1/2 W 110 p to a stem Ash & hickory -  
thence North 230 p to a stake on Co. Road at 100 p to a stake  
in a creek at 148 p. thence East 110 p to a stem and  
Pigeon oak in the East line of the survey. thence S 87 1/2 W 220 p  
to the beginning. Containing  
157 <sup>08</sup>/<sub>100</sub> ac.

L. Hoffman Co. Sur. L. C.

N<sup>o</sup> 454

(85)

Surveyed June 8. 1839 for John Wheeler the SW quarter of S  
11. T. 3. R. 14. N. W. Beginning at a stem at E W Corner of  
the section: thence S 88 W 40.25 ch. to a stem a white oak  
20 l. d. S 6 E 57 Links; thence N 1 E 40.50 ch. to a stem  
to a stem Bur oak 20 l. d. S 39 W 67 Links; Hickory 12 l. d.  
N 44 W 63 Links; thence N 89 W 40.25 chain, ending a stem  
at 17. 60 ch. to a stem a white oak 10 l. d. S 77 W 11 Links -  
White oak 16 l. d. S 55 E 26 Links; thence S 1 W 40 chain to  
the beginning Containing 162 ac.

L. Hoffman Co. S. L. C.

Charles Westling

Surveyed July 24. 1839 for Thomas Armstrong part  
of the N W q<sup>rt</sup> of S 4. T. 3. R. 14. N. W. as follows. Beginning  
at a stem marked + NE Corner of said q<sup>rt</sup>. 46.11 chain  
from other section corner. thence South 20 chain to a Hickory  
18 l. d. 20: S 12 W 19 Links; a dogwood & l. d. S 65 W 12 links,  
thence N 89.30 W 12.50 chain to a Bur oak 22 l. d. S 21 W 8  
links; Red oak 10 l. d. N 62 E 49 Links; thence North 200.