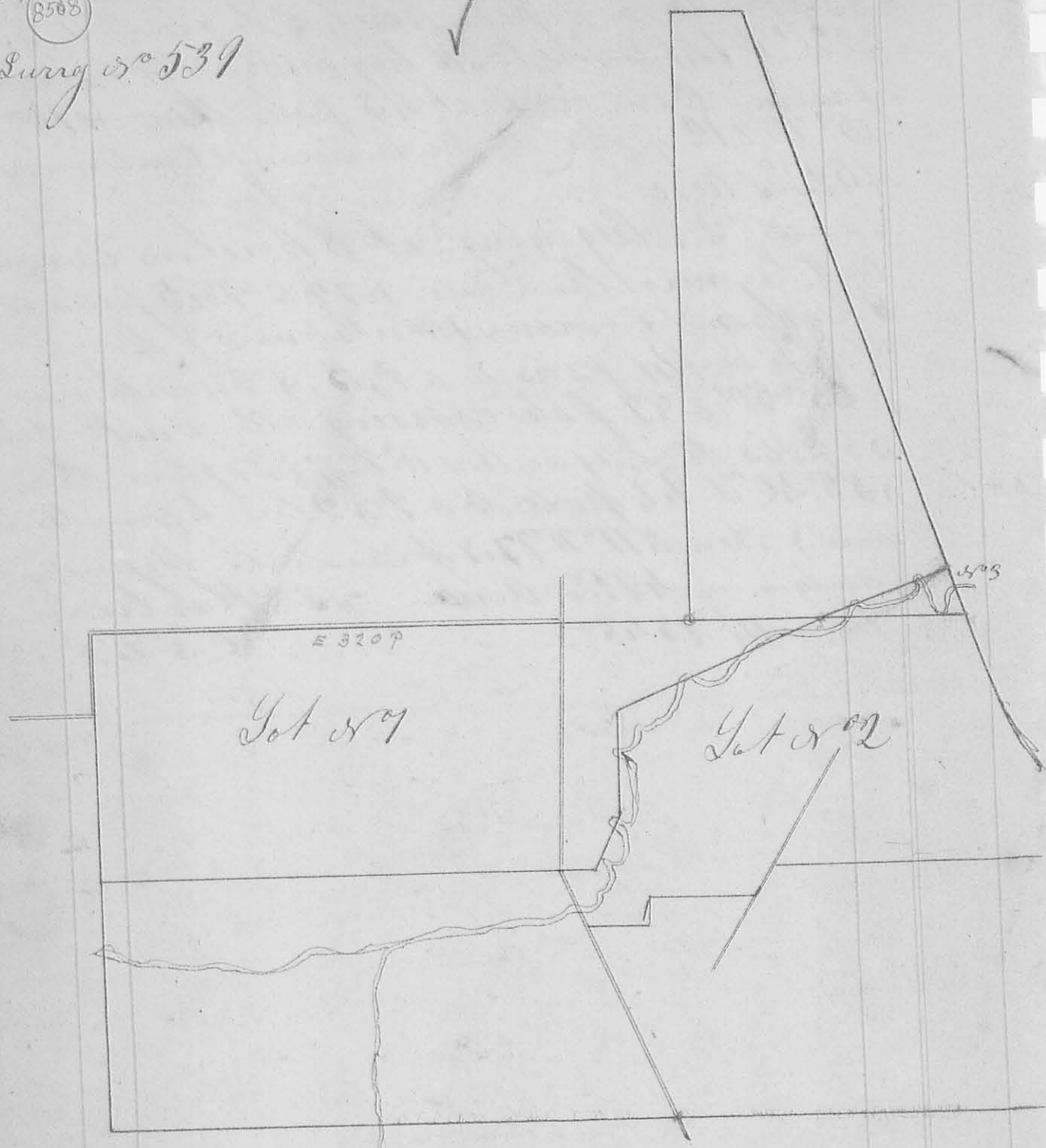


20. 8508

Survey No 539



Surveyed July 25 & 26<sup>th</sup> 1845 for Benjamin M. Pratt the following lots of land being parts of sections 21, 15 & 16 in Town 5, Range 13 East as follows

Lot No 1 Beginning at a Stake in the West Liberty Road corner to sections 21, 22, 27, 28, run East with the <sup>or Platt</sup> section line of sect 21, 320 poles to corner of sect 21 & 15, 386 poles to Stake in (Dry) channel of

Creek, crossing Otter creek at 42 poles and  
 Urbana & Mansfield road at 252 poles, then  
 S 63 1/2 W 121 poles to stone in edge of prairie 129  
 links S 52 W from a Run Oak crossing Mackajack  
 Creek several times then S 1 1/4 W 48 poles 7 links  
 to a stone on bank of creek crossing creek at 8 1/2  
 & 12 poles then S 31 W 32 poles 9 links to a stone  
 crossing creek 1/2 & 1/2 poles then West 262.5 poles  
 to a stone in West line of Section 21, then with said  
 line North 130 poles 7 links to the beginning  
 Containing 24 4/100 Acres

Lot No 2

Beginning at 2 Jack Oaks corner to Sections 15 &  
 16, on the Lullaw line & run with said line S 20 E  
 143 poles to a stone then West 15 3/4 poles to a stone  
 in the East & West Liberty road then with said road S  
 2 1/2 W 18 poles to a stone in centre of said road then  
~~S 88 1/4 W~~ S 88 1/4 W 57.5 poles to a stone then S 7/8 W 18.5  
 poles to a stone in lane at South West corner of  
 Orchard then N 88 1/4 W 33 poles to a stone in centre  
 of Mansfield & Urbana road then N 23 1/2 W 32.4 poles  
 to a stone in centre of said road where South line of  
 Lot No 1 crosses said road then East 17.5 poles to a  
 stone corner to Lot No 1 then N 31 E 32 poles 9 links  
 to a stone on bank creek crossing creek at 268 3/4  
 poles, then N 1 1/4 E 48 poles 7 links to a stone in edge of  
 prairie 129 links S 52 W from a Run Oak crossing creek  
 at 368 1/2 poles then N 63 1/2 E 121 poles to a stone in  
 (Dry) channel of creek then East 77 poles to the beginning  
 Containing 18 5/100 Acres

Lot No 3

Beginning as in Lot No 2 & run West 77 poles to a stone  
 in (Dry) channel of creek corner to Lot No 1 & 2 then  
 N 73 1/4 E 73 poles to a stone in the Lullaw line then  
 with said line S 20 E 24 poles crossing creek at  
 8 poles to the beginning containing 11 Acres being part of Section 15,  
 Town 8, Range 13 East  
 Wm Smith } Cler  
 Nathan Hering } " " A. H. H. H. H.  
 C. S. L. C.