

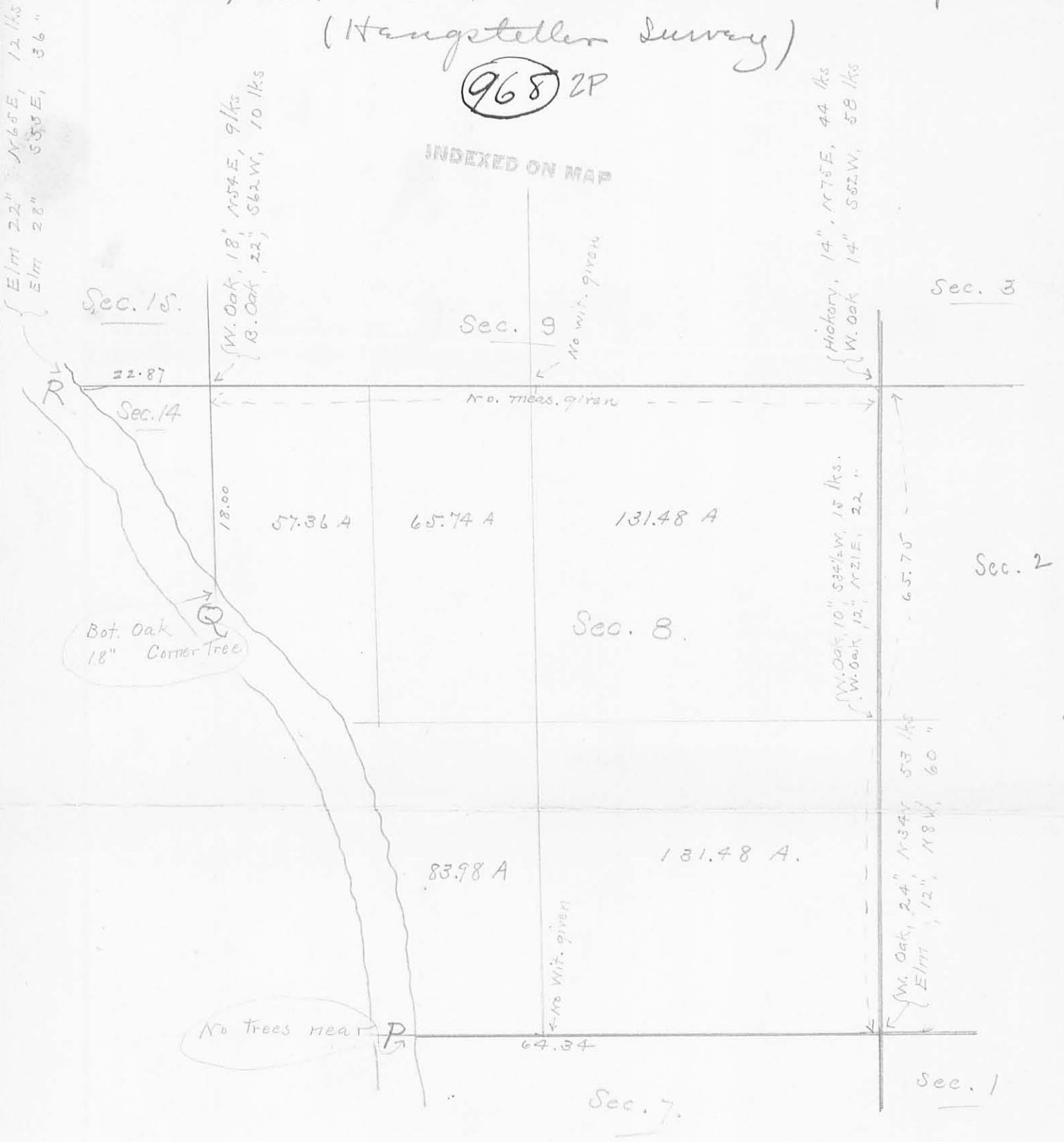
Hengsteller survey
 968 1/2
 Sec Book "C" Page 325
 Part of Section No. 8 - T. 2. R. 14.
 Pleasant Tp. Logan Co. Ohio.
 Scale 6 chains = One Inch.
 Surveyed as shown. Nov. 27. 1903. Apr. 4. 1904.
Jas. C. Wendus
 Surveyor, Logan Co. Ohio.

Iron bar
 Main 10' S 31 W 52 links.
 D. McClure

Stone Set at 22 Chains
 Elm Sprig on West bank of ditch.

Sec Book C Page 325
 Town 2. R. 14. Pleasant Top
 (Haugstetter Survey)
 968 2P

INDEXED ON MAP



N. side Sec. 9, meas - 77.41
 E. side Sec. 8 " 65.75