

Road No. 208
Pleasant Twp

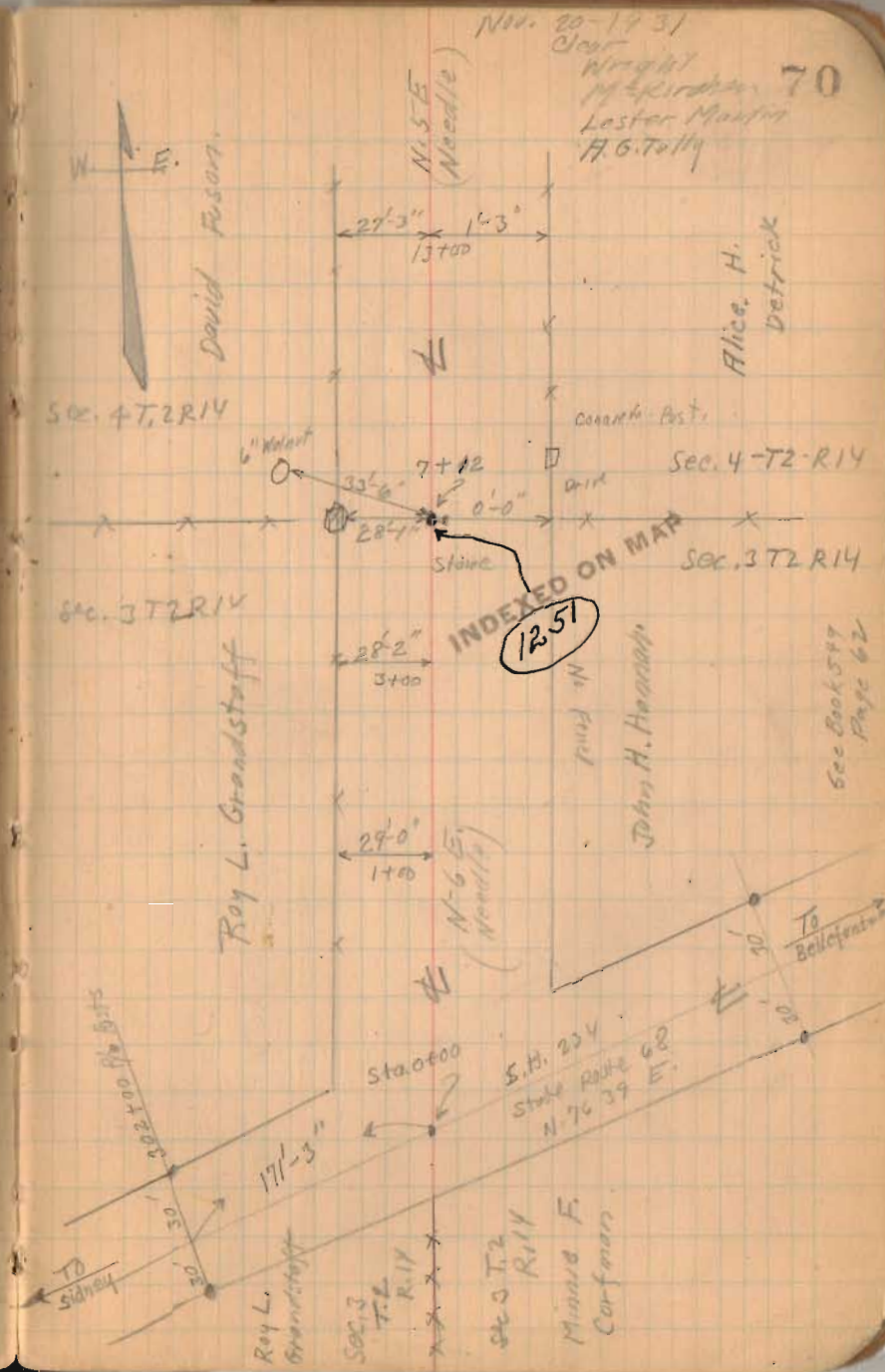
Stakes Placed for 40' Road.
Note however that this is 60'
Road Comm. Vol. 9 Page 162

See Smith survey No. 480
Burk C Page 286

See Plan L-20 Sheet 6 for
S.H. 234 A/W. Posts

see Commissioners journal 9 Page 37 ^{Aug} 162

Stakes placed at sta. 1-5-7-9-11 etc.



Road No. 208

157
INDEXED ON MAP

11-20-31

71

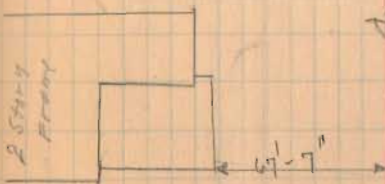
David Erson.

Alice H. Detrick.

concrete post

29'-0" 2'-6"
17+0

16+90



Drive.

concrete post 15+83

Road No. 208

11-20-31

72

