

Road 45
Miami and Pleasant Tap.

40' Road Road Record 1 Page 313-326

40' see Map Road Record 2 Page 530

Placed stakes 20' from E for
a 40' road.

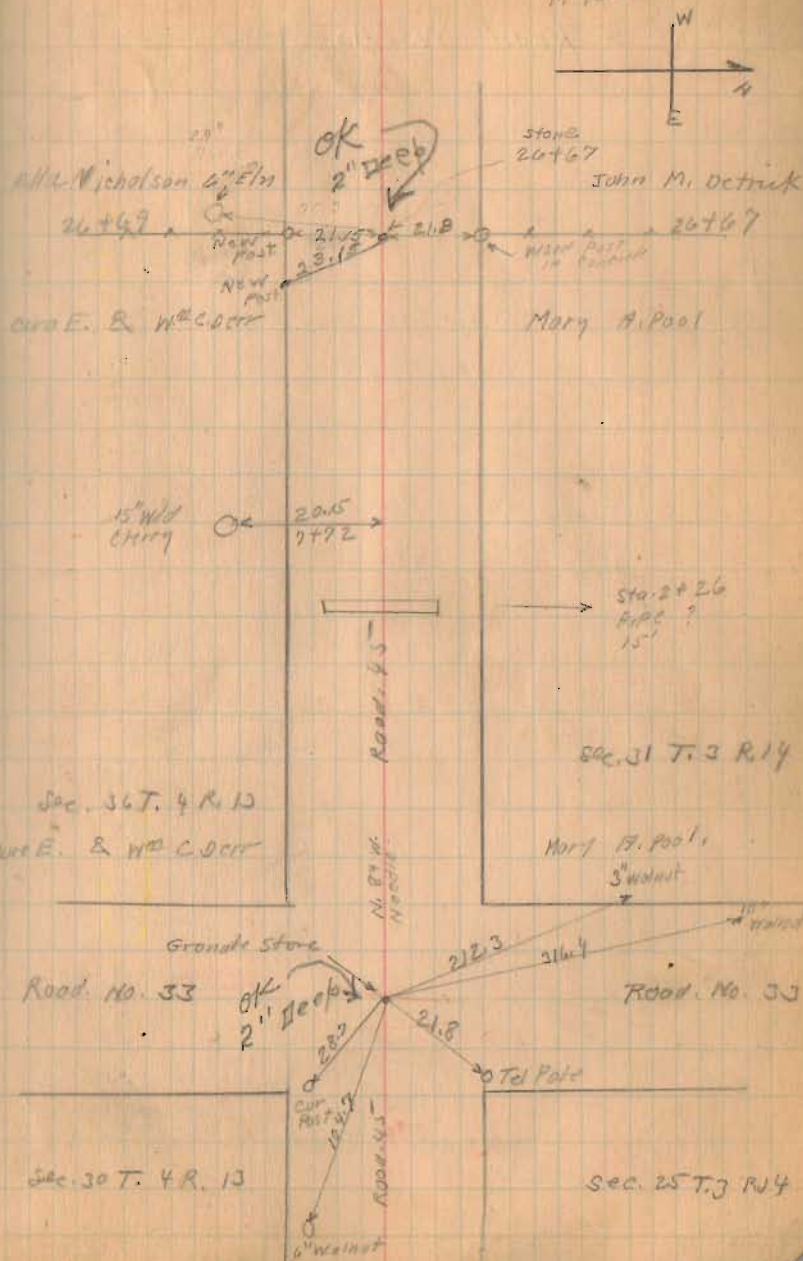
No stakes placed west of
Stanley Creek.

1430

INDEXED ON MAP

Dec. 23-1924
Cloudy Rain PM.
Windy
Wrought
Max. 40°

64



Road No. 45

Staked Fence line for O.W. Loffer

Aug 4-1942

Wilgus
Reed
Milliken

stakes set 20' from E

1430

INDEXED ON MAP

76.4 12-23-34

65

Sec. 6 T. 3 R. 13

Sec. 1 T. 2 R. 14

Sec. Cor
Sta.

55+38
Found Stake 8' from
Place Stone on
Top

(No Fence)

Sec. 31 T. 3 R. 14

Bridge 45-0.95

O.W. Loffer's

40+02

John M. Detrick

Brdy 45-0.95

Stoney Creek

