

INDEXED ON MAP

Distance	Bearing	Cosine	Latitudes		Depos	Surcs	Sine	D. M. D. S.	Double	Area
			N	S						
712.4	N.4°-55'E	.9963204	709.91 709.78		61.17 61.04		.0851067	61.17	43,425.1947	
1679.2	S.84°-55'E	.1886046		148.47 148.78	1672.86 1672.60		.9960669	1795.20		26,533.344
1105.0'	N.66°-19'E	.4016814	444.06 443.86		1015.11 1011.94		.9159795	4480.17	1,959,464.2302	
3202.7'	S.4°-25'W	.9970304		3182.60 3188.19 3193.19		246.14 246.64	.0770091	5246.14		16,722,595.864
1162.0'	N.84°-15'W	.1001881	116.63 116.42			1155.97 1156.15	.9949685	3844.03	448,329.2189	
2006.0'	N.4°-30'E	.9969173	2000.19 1999.82		157.70 157.39		.0784591	2845.76	5,692,060.6944	
819.25'	N.72°-19'W	.2870819	235.26 235.19			784.63 784.96	.9579060	2218.23	512,223.8288	
737.15'	S.76°-39'W	.2308989		170.08 170.21		717.10 717.23	.9729777	717.10		12,964.368
Total 11,423.7'			3505.19	3512.18 3505.07	2902.99	2904.78 2902.99			8,695,603.227	13,111,093.576 8,695,603.227
				7.09 2.87		1.79				2 8,415,590.349 4,207,795.1745
			3506.15	3506.15	2903.84	2903.84				

$$\frac{4,207,795.1745}{1,43560} = 96.59768 \text{ Acres}$$

Section 4 Town 2, Range 14 - 5.95 Acres
 Section 3 Town 2, Range 14 - 90.65 "
 Total 96.60 "

Lee Surveying and Mapping Co., Inc.

Land Surveys • Topography • Subdivisions • Construction Layout

117 N. Madriver St.
Bellefontaine OH 43311



Phone: (937) 593-7335
Fax: (937) 593-7444

WINNER-MORGAN FARMS, LTD 20.129 ACRES

Lying in Sections 3 and 4, Town 2, Range 14, Pleasant Township, Logan County, Ohio.

Being out of the Winner-Morgan Farms, Ltd., an Ohio Limited Liability Company, original 75.205 acre tract and all of the 5.95 acre tract as deeded and described in Official Record 328, Page 984, Tracts I and II of the Logan County Records of Deeds and being more particularly described as follows:

Beginning at a MAG nail set at the intersection of the center-lines of Ohio Route 47 and Township Road 208.

THENCE, with the center-line of Ohio Route 47 (60 feet wide), N 76°-39'-00" E, a distance of 245.20 feet to a MAG nail found.

THENCE, continuing with the center-line of Ohio Route 47, N 66°-04'-32" E, a distance of 1942.98 feet to a MAG nail set, passing a MAG nail found on the north line of Section 3 at 837.34 feet.

THENCE, with the east lines of Sections 3 and 4, and the west line of the Winner-Morgan Farms, Ltd., an Ohio Limited Liability Company, original 200.0 acre tract (O.R. 319, Pg. 198), S 4°-10'-04" W, a distance of 623.48 feet to a 5/8 inch iron rod set, passing 5/8 inch iron rod set at 34.01 feet and on the north line of Section 3 at 532.14 feet.

THENCE, S 69°-12'-16" W, a distance of 1276.31 feet to a 1 inch square iron bolt found, passing a 5/8 inch iron rod set at 1254.22 feet.

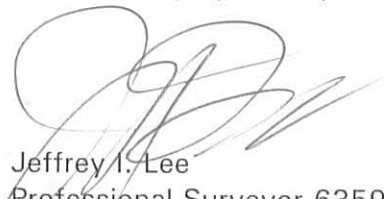
THENCE, with the center-line of Township Road 208 (40 feet wide), N 73°-27'-58" W, a distance of 809.62 feet to the point of beginning.

Containing 20.129 acres of which 1.822 acres are in the highway right-of-way, 5.958 acres are in Section 4, and 14.171 acres are in Section 3.

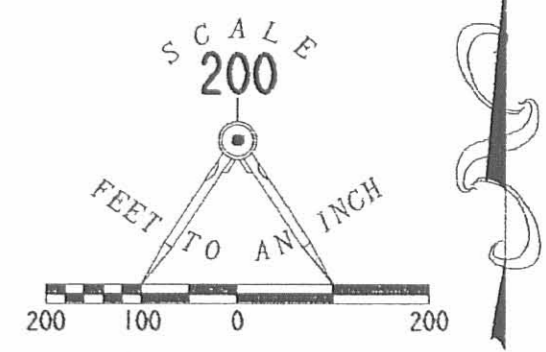
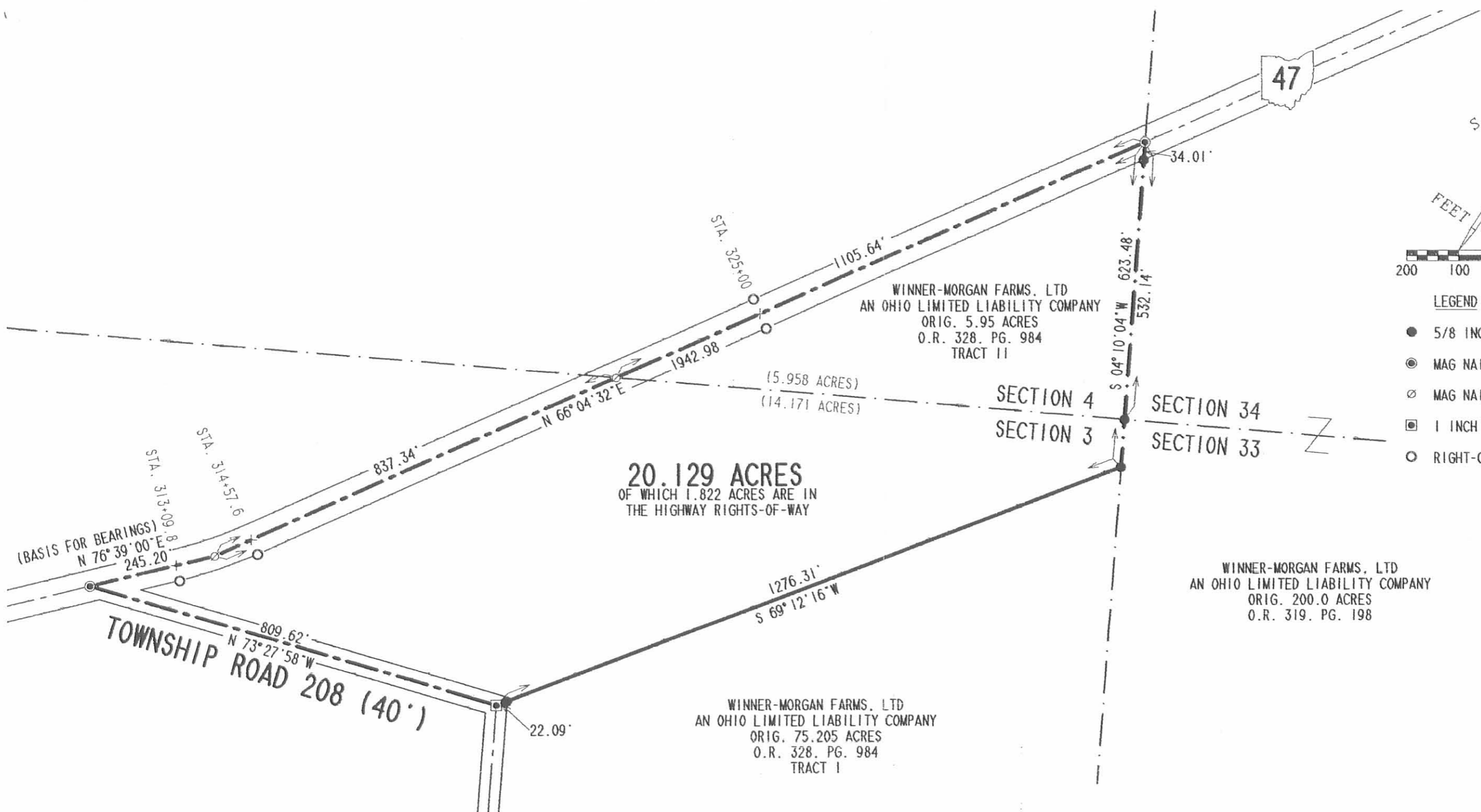
The basis for bearings is the center-line of Ohio Route 47 at the point of beginning being N 76°-39'-00" E, and all other bearings are from angles and distances measured in a field survey by Lee Surveying and Mapping Co., Inc. on May 2, 2000.

Description prepared by:




Jeffrey I. Lee
Professional Surveyor 6359
May 5, 2000

L-2936



- LEGEND**
- 5/8 INCH IRON ROD SET
 - ⊙ MAG NAIL SET
 - ⊗ MAG NAIL FOUND
 - ⊠ 1 INCH SQUARE IRON BOLT FOUND
 - RIGHT-OF-WAY MONUMENTS FOUND

20.129 ACRES
OF WHICH 1.822 ACRES ARE IN
THE HIGHWAY RIGHTS-OF-WAY

WINNER-MORGAN FARMS, LTD
AN OHIO LIMITED LIABILITY COMPANY
ORIG. 5.95 ACRES
O.R. 328, PG. 984
TRACT II

WINNER-MORGAN FARMS, LTD
AN OHIO LIMITED LIABILITY COMPANY
ORIG. 200.0 ACRES
O.R. 319, PG. 198

WINNER-MORGAN FARMS, LTD
AN OHIO LIMITED LIABILITY COMPANY
ORIG. 75.205 ACRES
O.R. 328, PG. 984
TRACT I

**SURVEY OF 20.129 ACRES OUT OF THE
WINNER-MORGAN FARMS, LTD
AN OHIO LIMITED LIABILITY COMPANY
ORIGINAL 75.205 AND 5.95 ACRE TRACTS
OFFICIAL RECORD 328, PAGE 984, TRACTS I AND II
SECTIONS 3 AND 4, TOWN 2, RANGE 14
PLEASANT TOWNSHIP
LOGAN COUNTY, OHIO**

REFERENCES

LOGAN COUNTY ENGINEERS' FILES:
L-20 AND L-189
R-1606, R-1811, R-1251 AND R-480
COMMISSIONERS JOURNAL 9, PAGES 37 & 162

2 WORKING DAYS
BEFORE YOU DIG
CALL TOLL FREE **800-362-2764**
OHIO UTILITIES PROTECTION SERVICE.

INDEXED ON MAP
1606 1P



ORIGINAL STAMP IN GREEN

SURVEYED BY:
Jeffrey I. Lee
JEFFREY I. LEE
PROFESSIONAL SURVEYOR 6359
MAY 2, 2000

COPYRIGHT 2000 BY:
LEE SURVEYING & MAPPING CO., INC.
117 North Madriver Street
BELLEFONTAINE, OHIO 43311
(937) 593-7335

REC'D 1-23-97 Sully OK ✓



Lee Surveying and Mapping Co., Inc.



Farm Surveys • Lot Surveys • Topography • Subdivisions • Construction Layout

117 NORTH MADRIVER STREET
BELLEFONTAINE, OHIO 43311

(937) 593-7335
FAX (937) 593-7444

ESTELLE LOIS DUNLAP 15.445 ACRES

Lying in Section 3, Town 2, Range 14, Pleasant Township, Logan County, Ohio.

Being out of the Estelle Lois Dunlap original 90.65 acre tract as deeded and described in Volume 404, Page 307 of the Logan County Records of Deeds and being more particularly described as follows:

Beginning at a stone found at the northwest corner of the northeast quarter of the said Section 3 and being on the center-line of right-of-way of Township Road 208 (60 feet wide).

THENCE, with the north line of Section 3 and the south line of the Alan Joseph Winner original 135.0 acre tract (O.R. 182, Pg. 376), S 85°-09'-23" E, a distance of 1677.89 feet to a MAG nail set.

THENCE, with the center-line of Ohio Route 47 (60 feet wide), the following two courses:

S 66°-04'-32" W, a distance of 837.34 feet to a MAG nail set.

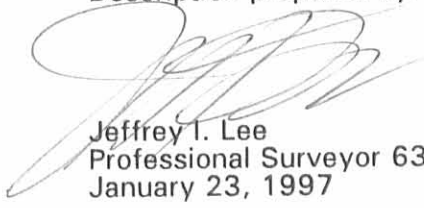
S 76°-39'-00" W, a distance of 987.95 feet to a MAG nail set.

THENCE, with the west line of the northeast quarter of Section 3 and the center-line of Township Road 208, N 4°-24'-48" E, a distance of 711.47 feet to the point of beginning.

Containing 15.445 acres of which 1.702 acre is within the highway right-of-way.

The basis for bearings is the center-line of Ohio Route 47 at the intersection with Township Road 208 is S 76°-39'-00" W, and all other bearings are from angles and distances measured in a field survey by Lee Surveying and Mapping Co., Inc. on January 23, 1997.

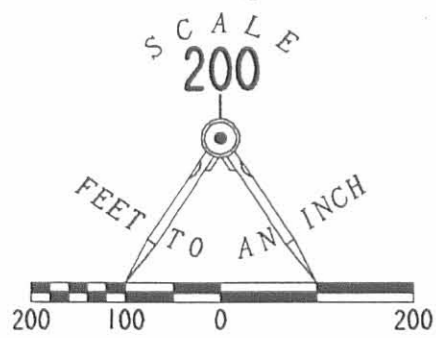
Description prepared by:


Jeffrey I. Lee
Professional Surveyor 6359
January 23, 1997



ORIGINAL STAMP IN GREEN

INDEXED ON MAP
1606 2D



ALAN JOSEPH WINNER
ORIGINAL 135.0 ACRE TRACT
O.R. 182. PG. 376

LEGEND

- 5/8" IRON ROD SET
- ⊙ MAG NAIL SET
- RIGHT-OF-WAY MONUMENT FOUND
- △ STONE FOUND
(1' BELOW GRADE,
1.5' EAST OF EAST
EDGE OF PAVEMENT)
- ⊕ RAILROAD SPIKE SET



TOWNSHIP ROAD 208 (60')
QUARTER SECTION LINE

SET REFERENCE
RAILROAD SPIKE
N 85° 09' 23" W
10.00'
FROM STONE FOUND

15.445 ACRES
OF WHICH 1.702 ACRES IS WITHIN
HIGHWAY RIGHT-OF-WAY

SECTION 4
SECTION 3

ESTELLE LOIS DUNLAP
5.95 ACRE TRACT
VOL. 404. PG. 307

ESTELLE LOIS DUNLAP
90.65 ACRE TRACT
VOL. 404. PG. 307

REFERENCES

LOGAN COUNTY MAP ROOM FILES:
L-20, L-189, R-1606, 1811, 1251, 480
COMMISSIONERS JOURNAL 9, PAGES 37 & 162

TOWNSHIP ROAD 208
(BASIS FOR BEARINGS AND STATIONS MAP L-20)

**SURVEY OF 15.445 ACRES OUT OF THE
ESTELLE LOIS DUNLAP ORIGINAL 90.65 ACRE TRACT
VOLUME 404, PAGE 307
SECTION 3, TOWN 2, RANGE 14
PLEASANT TOWNSHIP
LOGAN COUNTY, OHIO**



ORIGINAL STAMP IN GREEN

SURVEYED BY:

(Signature)
JEFFREY I. LEE
PROFESSIONAL SURVEYOR 6359
JANUARY 23, 1997

COPYRIGHT 1997 BY:
LEE SURVEYING & MAPPING CO., INC.
117 North Madriver Street
BELLEFONTAINE, OHIO 43311
(937) 593-7335

2 WORKING DAYS
BEFORE YOU DIG
CALL TOLL FREE **800-362-2764**
OHIO UTILITIES PROTECTION SERVICE.

(Milroy Survey)

The following described land in the Northeast quarter of Section 3, Town 2, Range 14, of Between the Miami Rivers Survey, and being in Pleasant Township, Logan County, Ohio.

Beginning at a cross in the center of S. H. 234 (Route 47), at Station 303 + 71.25 as shown on Page # 6, of Right-of-way Plan L-20 as filed in Logan County Surveyor's office, and in the center of Road # 208; thence with the center of Road # 208 N. 4° - 55' E. 713.4 feet to a stone in the center of said Road # 208 and in the line between Sections 3 & 4, thence with said Section Line S. 84° - 55' E. 2654.0 feet to a post in the Northeast corner of Section 3, (said line crossed S. H. # 234 at 1679.2 feet, said point being at Station 322 + 00.9 of S. H. # 234), thence with the line between Section 3, Town 2, Range 14, and Section 33, Town 3, Range 14 S. 4° - 35' W. 2670.6 feet to a stone in the center of Road # 209, thence with the center of Road # 209 N. 84° - 15' W. 1162.0 feet to a stone at the intersection of Roads # 209 & 208, thence with the center of Road # 208 N. 4° - 30' E. 2006.0 feet to an iron pin at an angle in Road # 208, thence continuing with Road # 208 N. 73° - 19' W. 819.35 feet to the center of S. H. # 234 at Station 311 + 08.4, thence with S. H. # 234 S. 76° - 39' W. 737.15 feet to the place of beginning, containing 90.65 Acres more or less.

ALSO))-- The following described land in the Southeast quarter of Section 4, Town 2, Range 14, of Between the Miami Rivers Survey, and being in Pleasant Township, Logan County, Ohio.

Beginning at a point in the center of S. H. 234 at Station 333 + 05.9 and in the center of Road # 211, said point being in the line between Section 4, Town 2, Range 14, and Section 34, Town 3, Range 14; thence with the Section Line S. 4° - 35' W. 532.1 feet to a post in the

INDEXED ON MAP
1606 3D-1

(7)

(Milroy Survey)

Southeast corner of Section 4, thence with the line between Sections 4 & 3, N. $84^{\circ} - 55'$ E. 974.86 feet to the center of S. H. 234 at Station 322 + 00.9, thence with the center of S. H. 234 N. $66^{\circ} - 19'$ E. 1105.0 feet to the place of beginning, containing 5.95 Acres more or less.

Containing in all 96.60 acres more or less.

The above tracts being the same tracts as surveyed June 7, 1934 as shown and recorded in Logan County Surveyors Book #549 Page # 63.

INDEXED ON MAP

1606 3D-2

