



Road 24

154+00

151+00

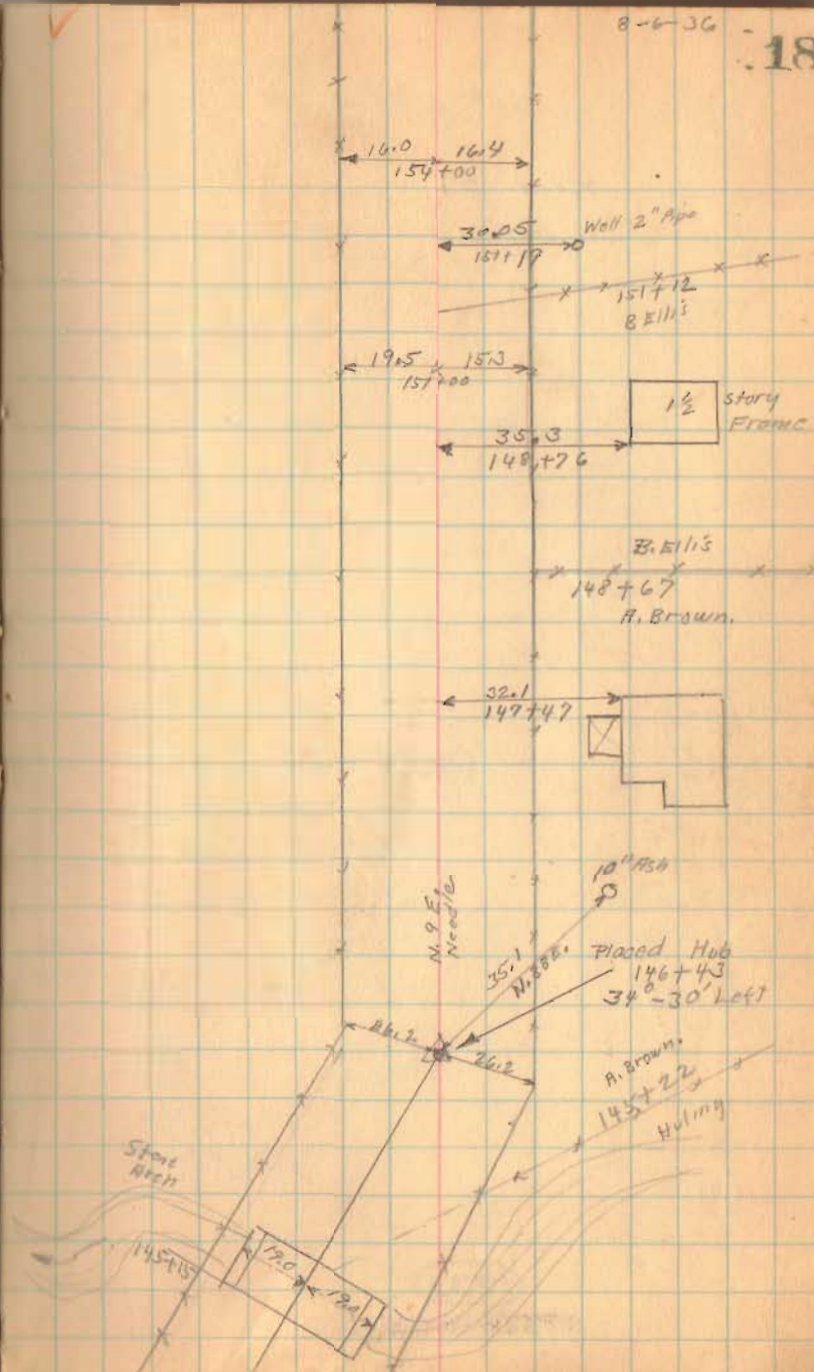
146+43

1733

INDEXED ON MAP

8-6-36

18



Road 24

170+00

163+25

159+00

1733

INDEXED ON MAP

Loggers

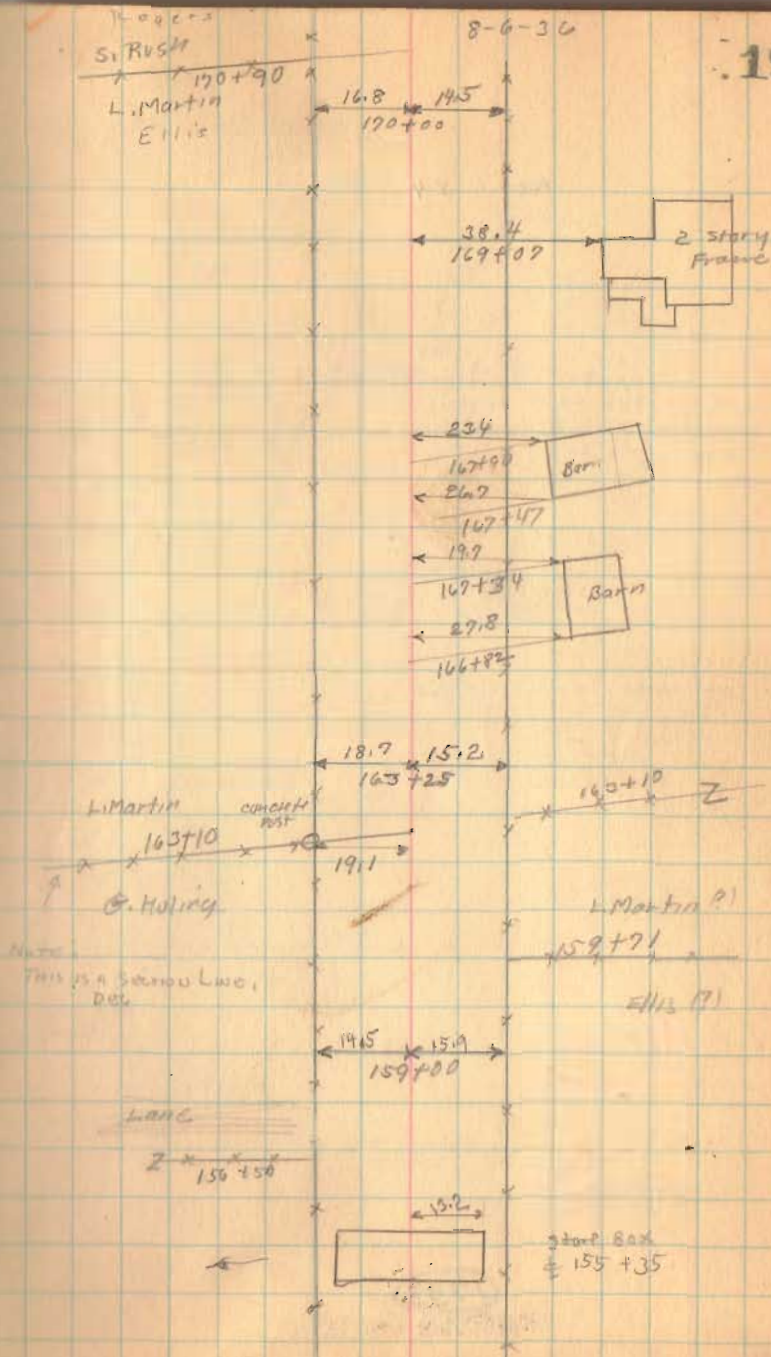
S. Rust

L. Martin

Ellis

8-6-36

19



Road. 24

195+03  
181+75  
13728

190+90  
181+75  
9+15

2  
13 x

138 1,100

1330 1,100 0.082  
10640  
362.0

1330 1,100 0.082  
10640

1300  
1000  
10.000

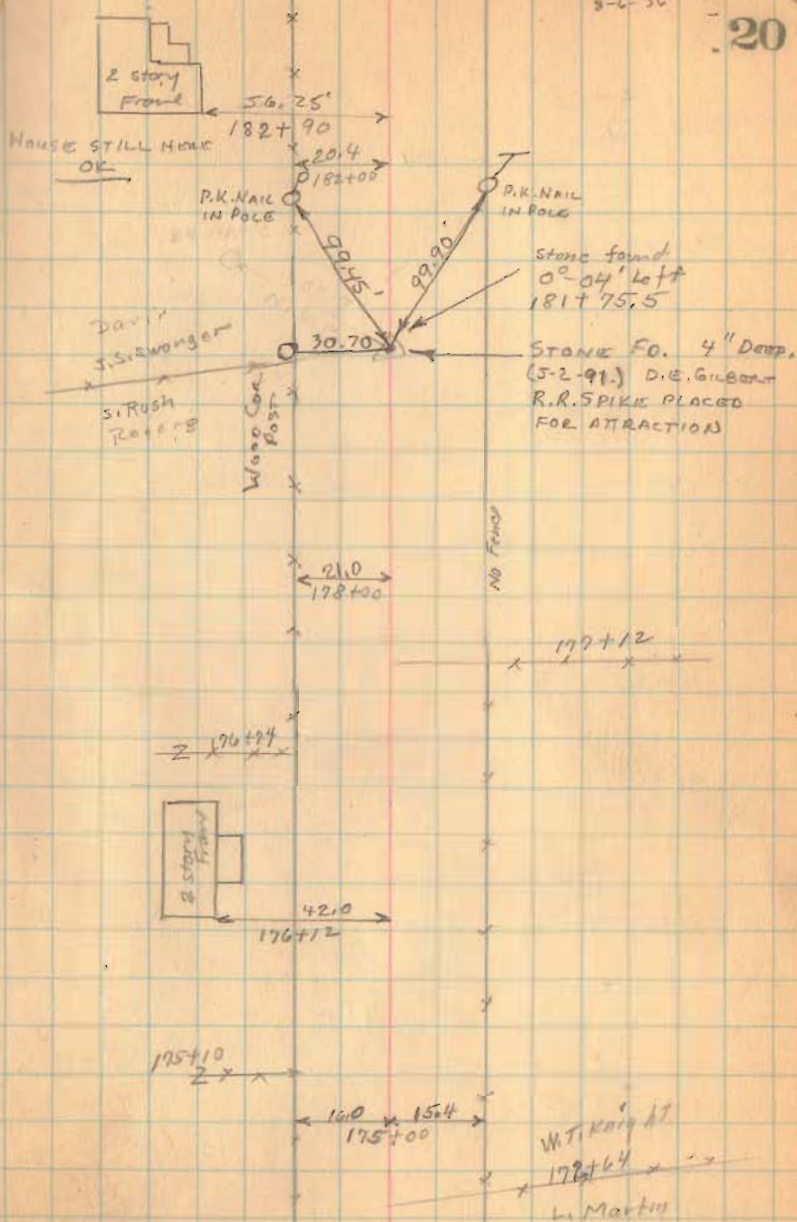
182+00

178+00

175+00

1733

INDEXED ON MAP



Road 24

199+06

196+00

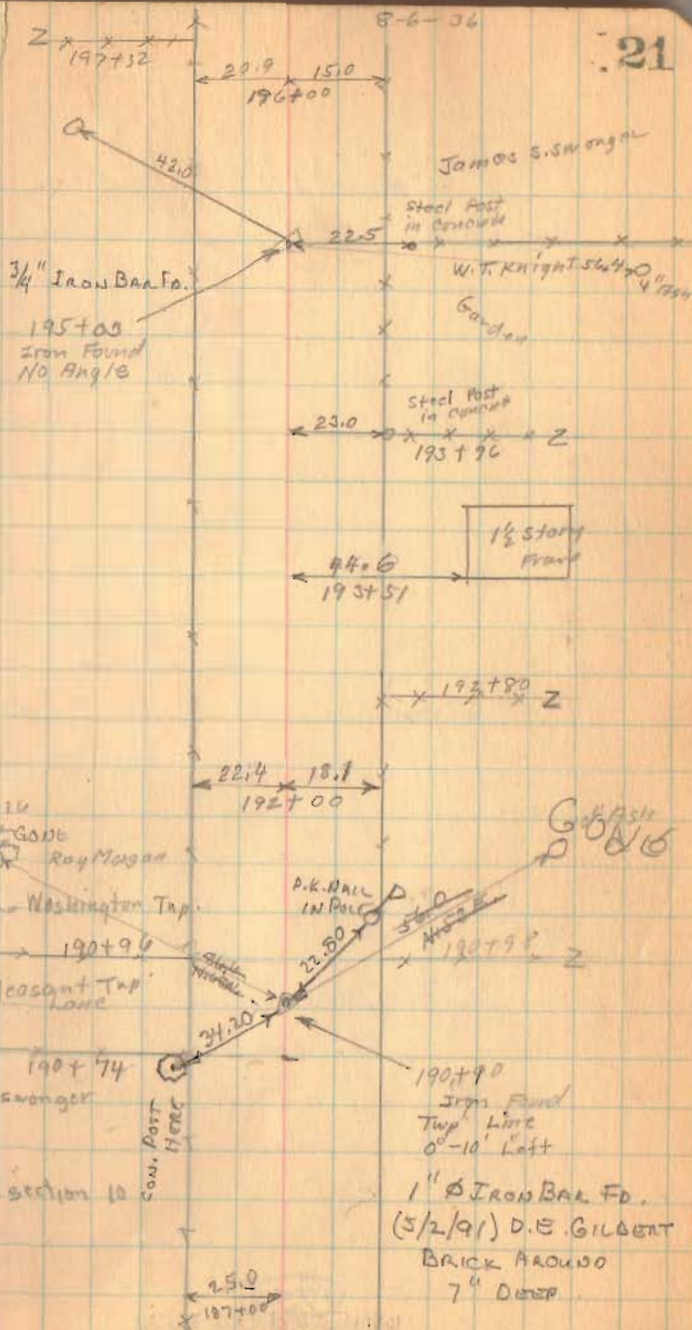
192+00

187+00

1733

INDEXED ON MAP

21





Road 24

223+00

218+00

229+39 P.I. Near Creek  
12+99 Sigs Record  
216+40

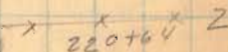
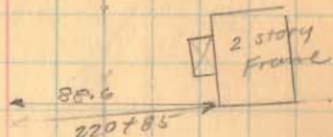
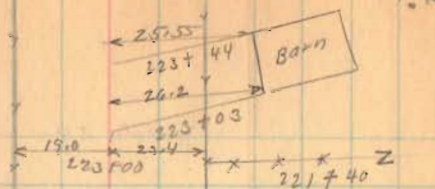
216+40

1733

INDEXED ON MAP

23

8-7-30

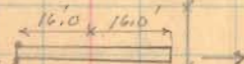


216+40  
Placed Iron  
3'-20' Ht

Found 5-8-1991 DEG  
1" Iron Bar - 3" Deep  
Δ = 3°-22' LT.  
114100 10"  
Oil.

220

Found 12/2/65 Bar  
Replaced w/ 1" # bar  
L.H.C.



Road. 24

235+00

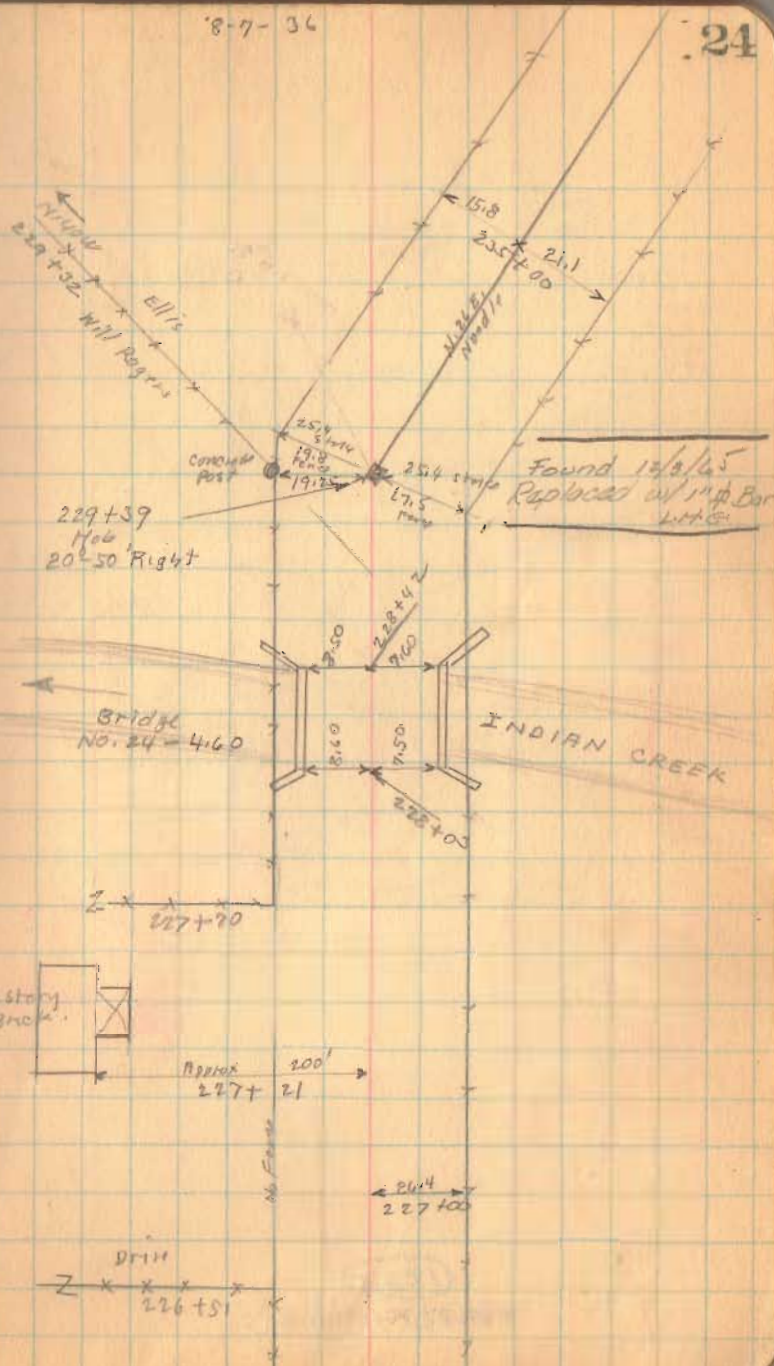
229+39

227+00

1733  
INDEXED ON MAP

8-7-36

24





Road 24

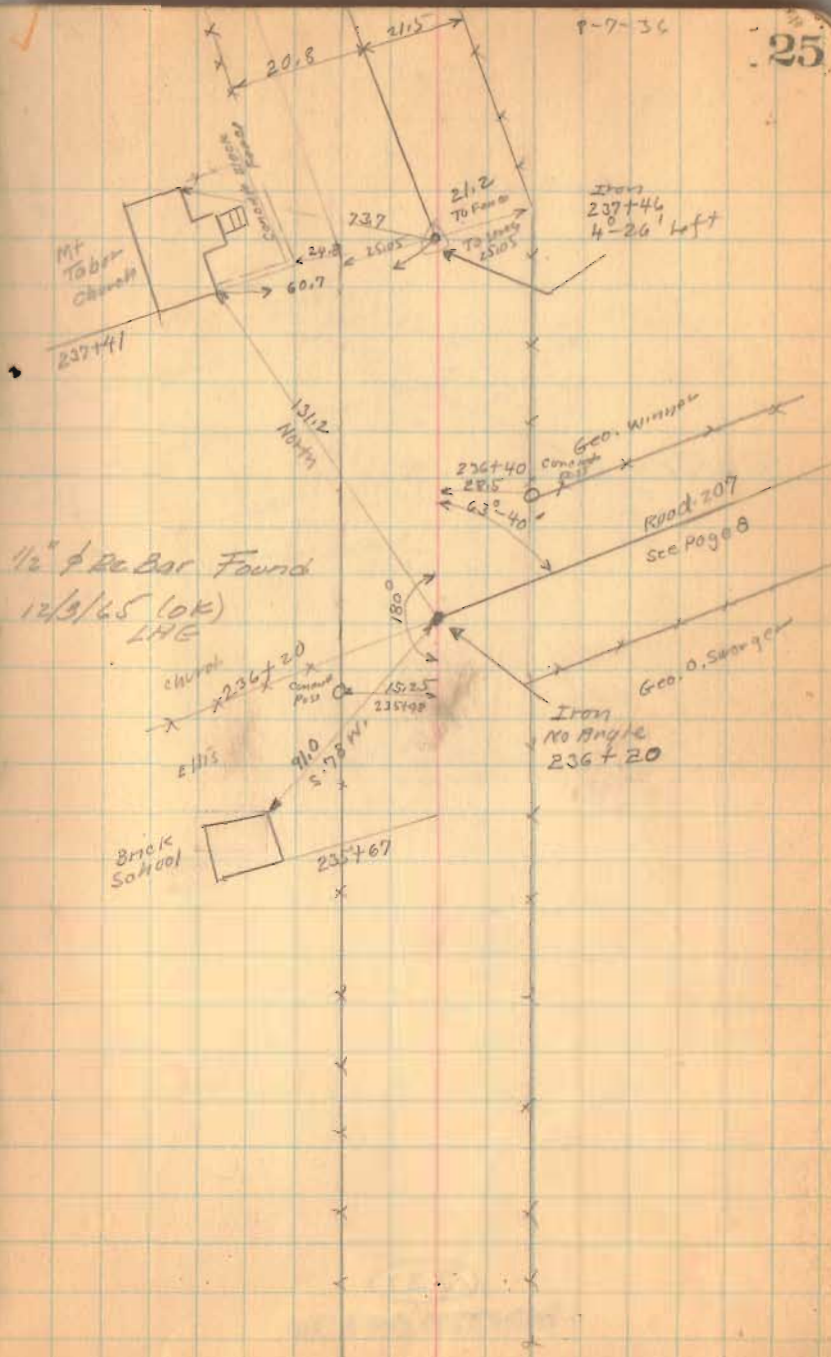
239+00

237+46

Right Only

1733

INDEXED ON MAP



Road 24

245+62 Right Only

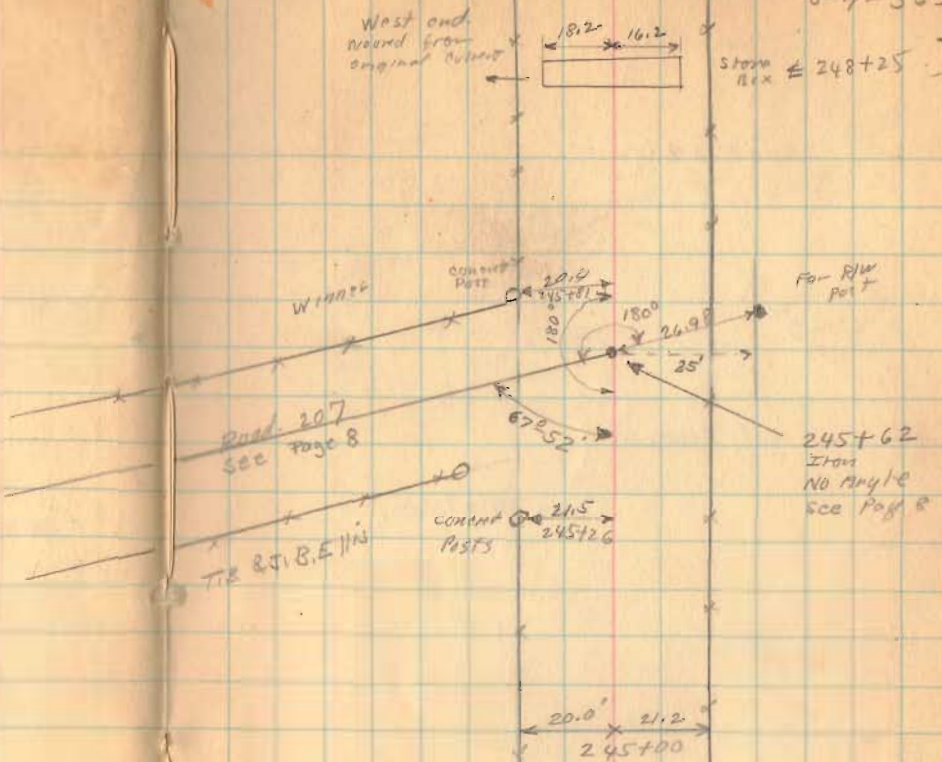
245+00

1733

INDEXED ON MAP

8-7-36

26



Road 24

260+00

90° Barksite

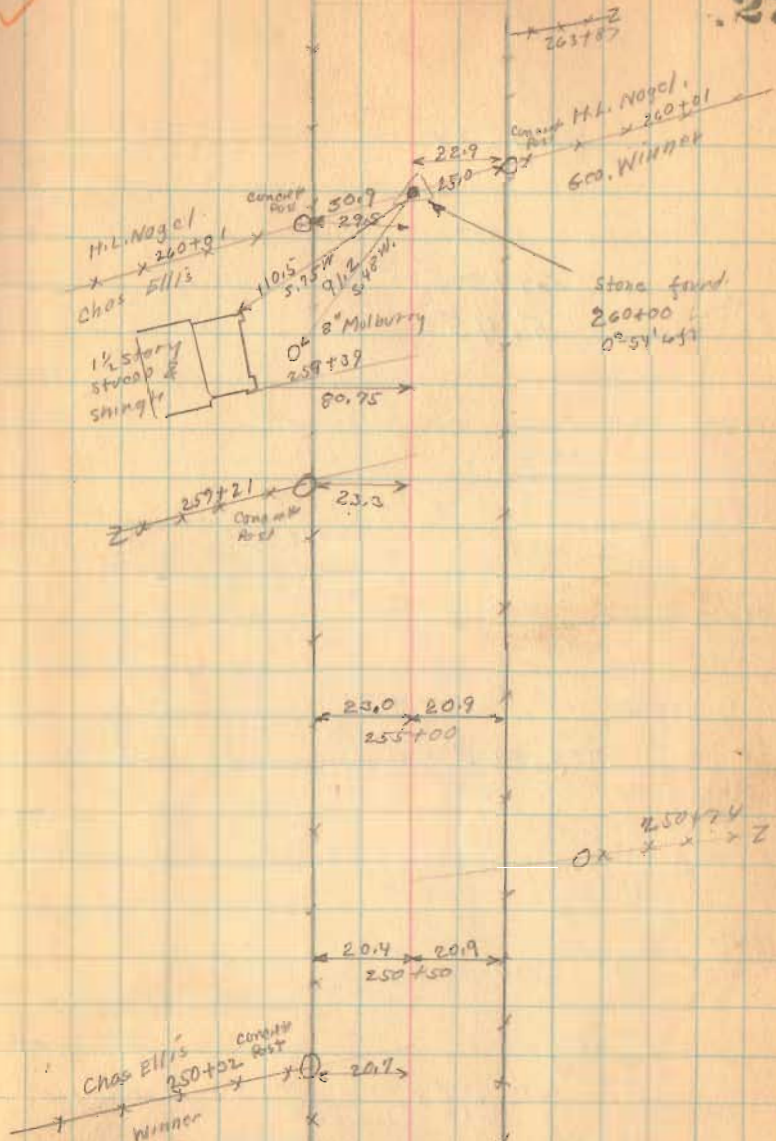
250+50

1733

INDEXED ON MAP

8-7-36

27



## Road. 24

Length 28752 Feet

Length 5.44545 Miles

Length 5.45 Miles

(287+00) (set. 90° with Transit.)

(280+00)

Hub 1970

(276+00)

(294+00) left only

294+26.5  
stone found  
62° 52' Right

Post

Sam'l Huber

Corner  
No. 10

18.7

Geo. B. Hudson

(266+00)

272+24 x

Lane

272+10

Geo. B. Hudson  
x 269+94

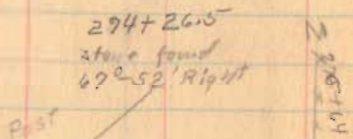
H.L. Nagel, 269+73.5

22.5 22.8

266+00

63.4

264+19.7

All  
flatsStone  
Wall18.1  
18.1  
18.1

19.5

18.7

18.7

18.7

18.7

18.7

18.7

18.7

18.7

18.7

18.7

18.7

18.7

18.7

18.7

18.7

18.7

18.7

18.7

18.7

18.7

18.7

18.7

18.7

18.7

Section 12

Sam'l Huber

1260.7

1260.7

1260.7

1260.7

1260.7

1260.7

1260.7

1260.7

1260.7

1260.7

1260.7

1260.7

1260.7

1260.7

1260.7

1260.7

1260.7

1260.7

1260.7

1260.7

1260.7

1260.7

1260.7

1260.7

1260.7

N. 82° E  
Needle

No Fence

L. F. Ames

Section 11

30'

30'

30'

30'

30'

30'

30'

30'

30'

30'

30'

30'

30'

30'

30'

30'

30'

S.H. 27

Road 69

S.H. 27

Road 69

S.H. 27

Road 69

S.H. 27

Road 69

S.H. 27

Road 69

S.H. 27

Road 69

S.H. 27

Road 69

S.H. 27

Road 69

S.H. 27

Road 69

S.H. 27

Road 69

N.W. 1/4  
591+00  
Plan L-19  
Page 4

Page 4

Section 6

Many  
rocksCorner  
No. 1287+52  
Placed SpikesS.H. 27  
Road 69S.H. 27  
Road 69S.H. 27  
Road 69S.H. 27  
Road 69S.H. 27  
Road 69S.H. 27  
Road 69S.H. 27  
Road 69S.H. 27  
Road 69S.H. 27  
Road 69S.H. 27  
Road 69S.H. 27  
Road 69S.H. 27  
Road 69S.H. 27  
Road 69S.H. 27  
Road 69S.H. 27  
Road 69

1733

INDEXED ON MAP