

Road 210
Pleasant Twp.

stakes placed 20' from d for 40' Road.
stakes approx 150' not on stations

33'- Road Record 3 Page 95 Tal03 E.H. Rooze

Map Road Record 3 Page 100

Section Line B

G.R. Fuson

1751

INDEXED ON MAP

Oct. 5, 1936

Fine day.

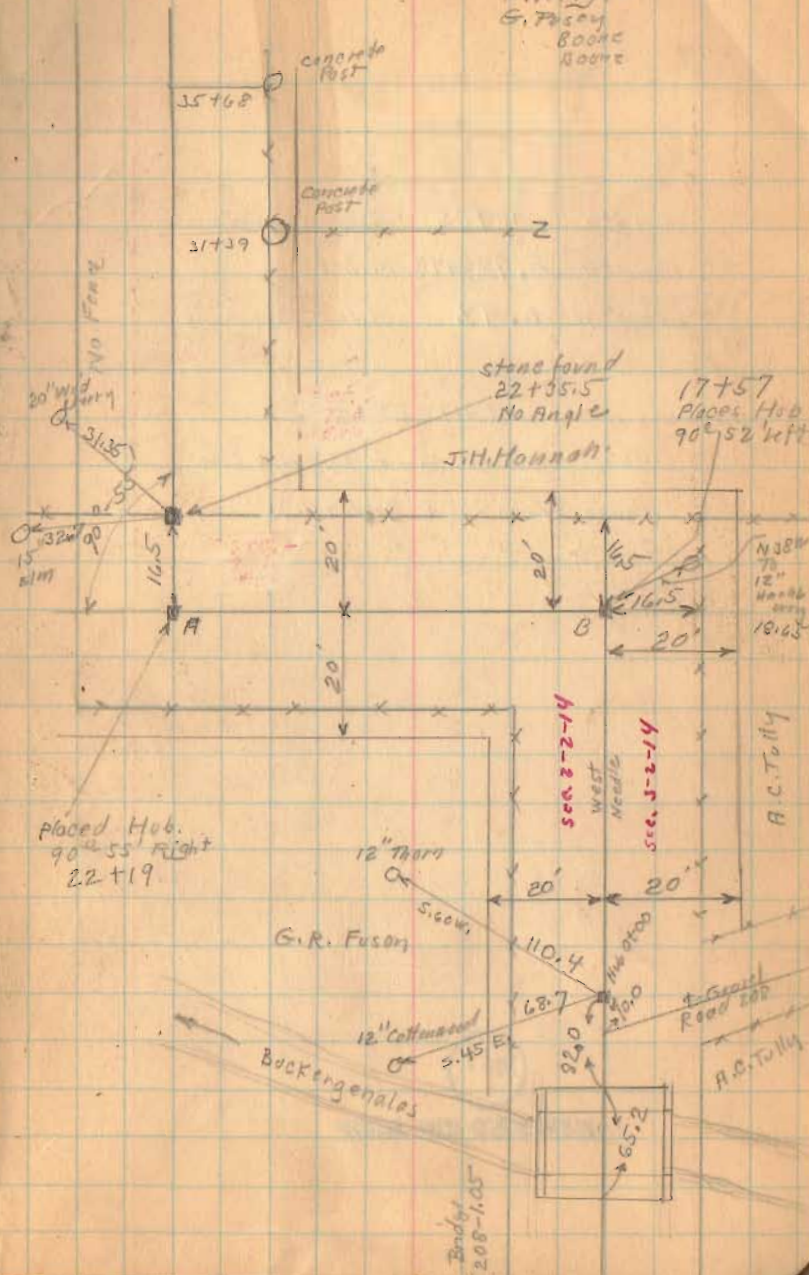
F. Wright

G. Fuson

Boone

Boone

71



Road. 210

Length 4905' Feet

Length 0.928973 Miles

Length 0.93 Miles

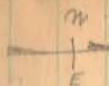
Rovze Deed. Vol. 117-533

463' section line To N.W. Cor

Rovze Farm (at Road 210)

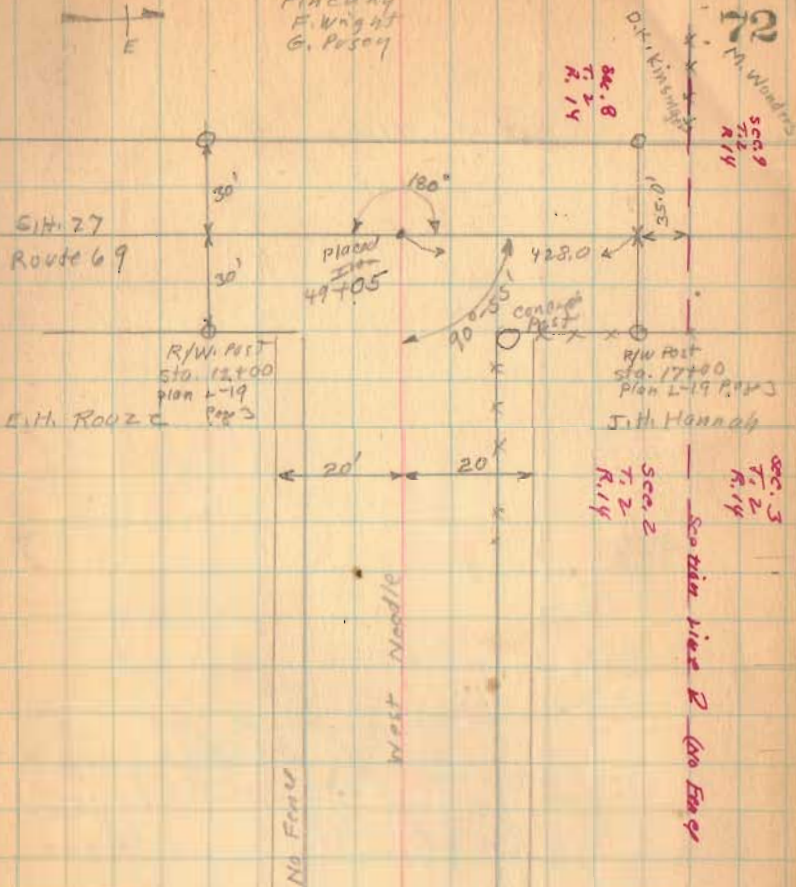
1751

INDEXED ON MAP

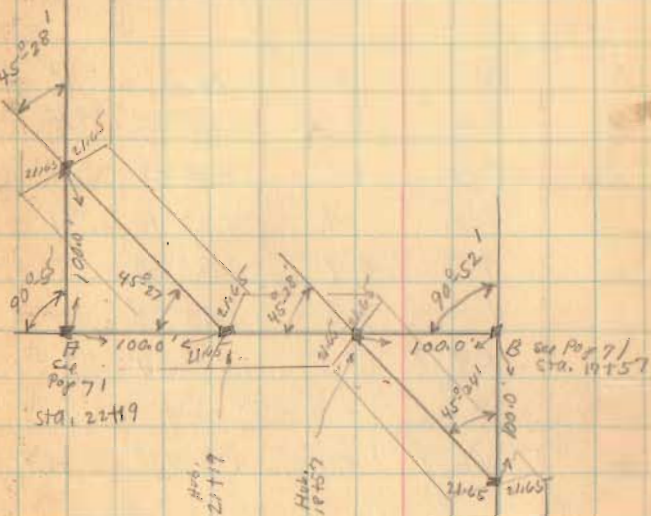


Oct. 6-1936
Finchday
F. Wright
G. Posey

Oct. 5-1936



Road 210



1751

INDEXED ON MAP