

The following described land being in Pleasant Township Logan County Ohio and being in section 10 Town I Range 8

Beginning at the N.W. corner of the S.W. Quarter of said section 10 and in the center of County Road # 34 thence with the West side of said section 10 and the center of said road # 34 North 252 feet to C.E.Hales S.W. corner thence East 2645 feet to a post in the  $\frac{1}{2}$  section line thence South with the  $\frac{1}{2}$  section line 808 feet ~~the last described line passing the center of the section at 252 feet to the~~ center of State Highway # 234 ( Route 47 ) the last described line passing the center of the section at 252 feet thence with the center of State Highway # 234 ( Route 47 ) easterly 1332 feet thence with the West line of Ira Anderson 26.80 acre tract South 862 feet to said Andersons S.W. corner and also in the line of B.E.Metcalf thence with the North line of said Metcalf West 1326 feet to said Metcalf N.W. corner thence with Metcalf West line South 681 feet to the N.E. corner of Butts 40 acre tract thence with said Butts North line West 2653 feet to the center of County Road # 34 and also being the West line of said Section 10 thence with the center of Road # 34 and the West line of said Section 10 North 2033 feet to the place of beginning the last described line passing the center of State Highway # 234 ( Route 47 ) at 1293 feet . said tract containing 165.98 acres.

INDEXED ON MAP  
1859 10

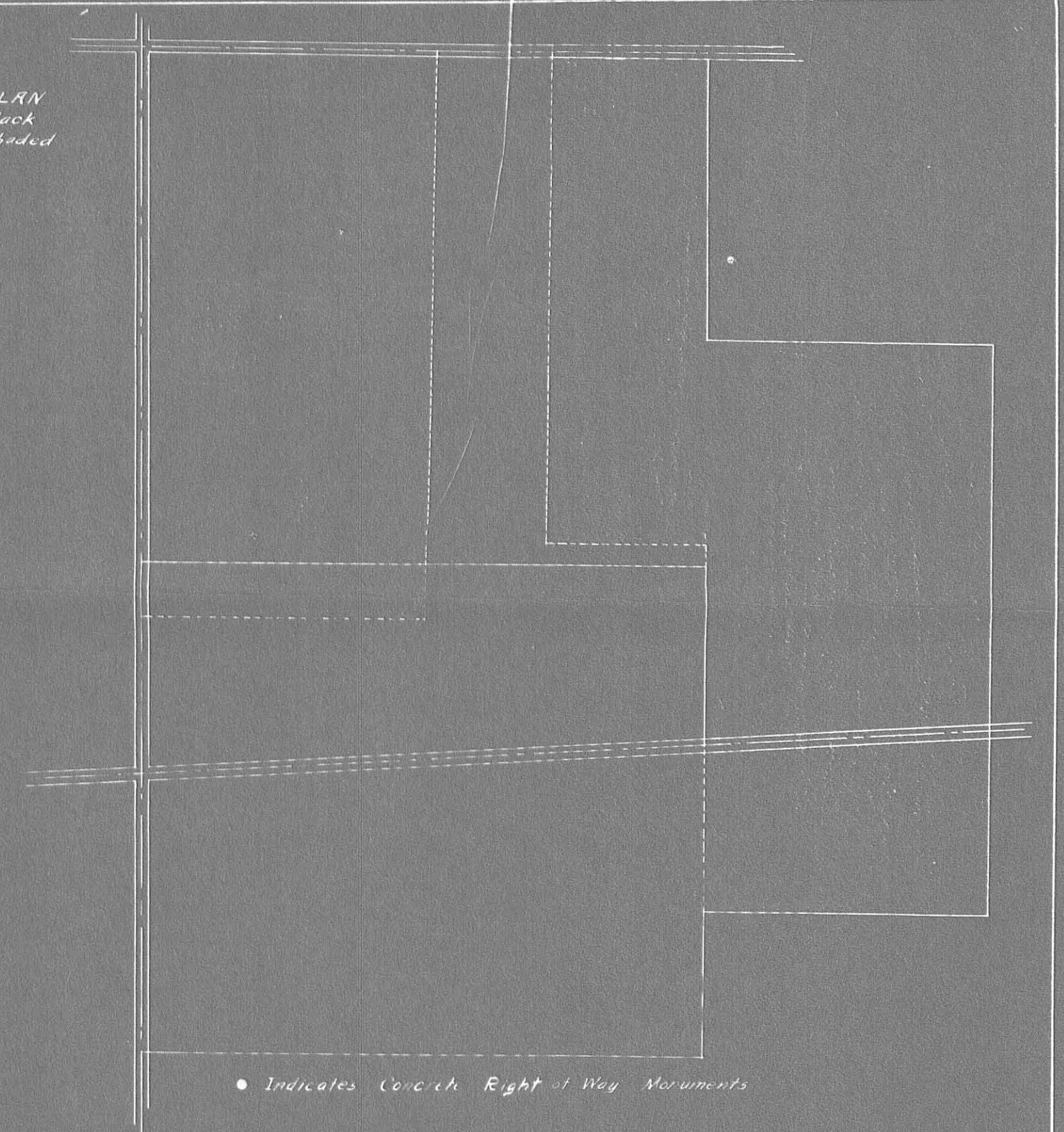
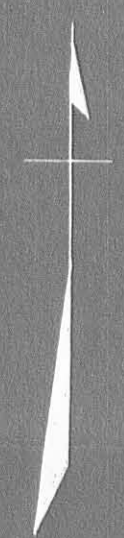


BLACK SURVEY  
SEC. 10 - T. 1 - R. 8 PLEASANT TOWNSHIP

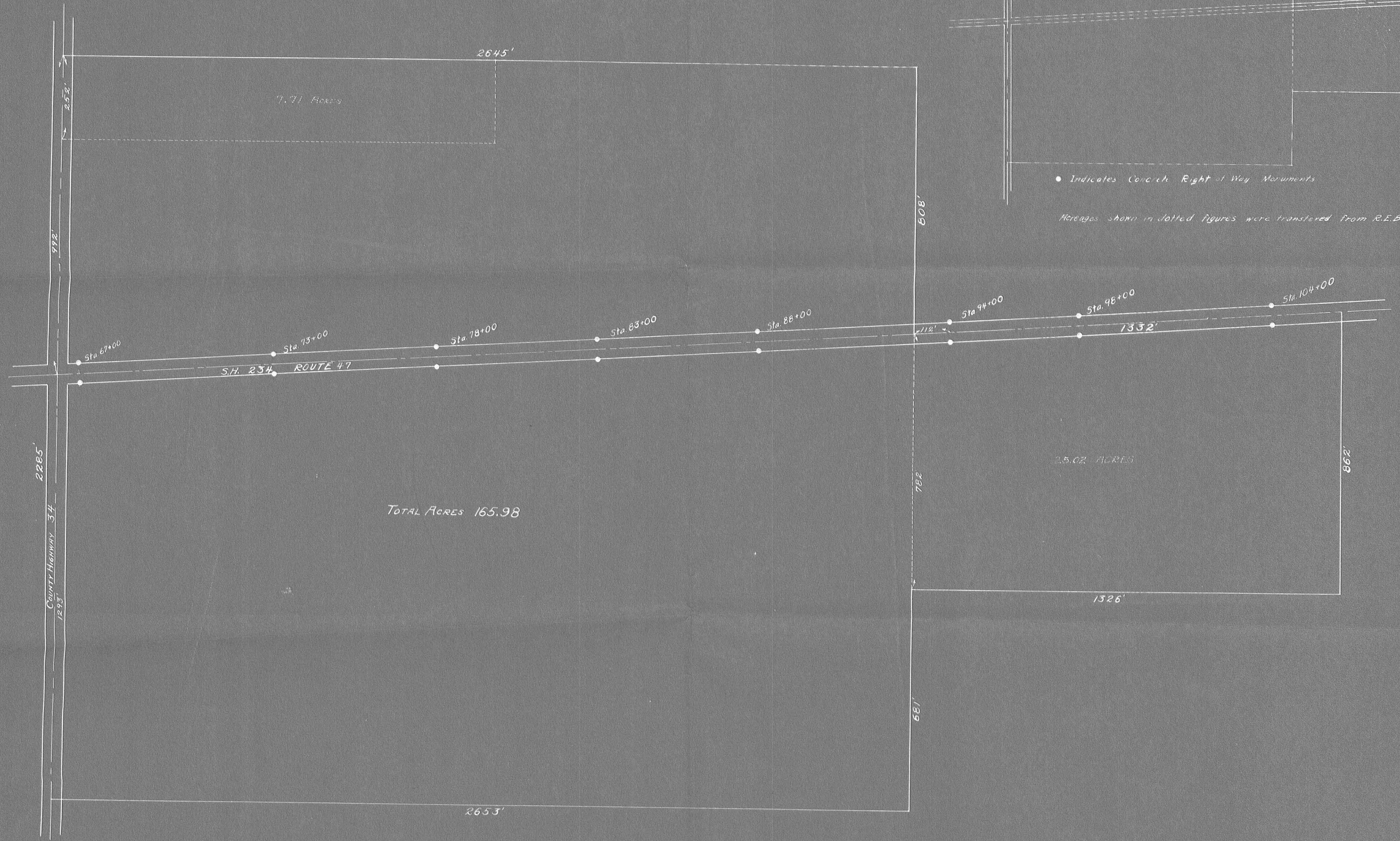
SCALE 1" = 200'

PLOT PLAN  
Original R.E. Black  
Land shown shaded

INDEXED ON MAP  
(1659)  
INDEXED ON MAP



Acres shown in dotted figures were transferred from R.E. Black Estate



TOTAL ACRES 165.98



Miller (2nd) Black Deer.

W. of Logansville - 6-29-09

Did not find stone or SW  $\angle$  120 a. pc.  
 Set small pointed black boulder a  
 pes. tile in cent pike and in line  
 with old fence row E.

Cre. cent road = North. =

- Meas N. with pike.

19.59 Cent Sidney pike  
(Cre. pike =  $N 85\frac{3}{4} E$ )30.76 found red quartz planted as  
NW  $\angle$  of tract in cent road  
New wt: 11" Sugar 531E. 64 lbs

Meas east on N. line

at 20.15 found pointed boulder  
 & found remains of old decayed  
 rlls stump deep under the ground  
 about 31 lbs N. of stone  
 New wt: 13" S. Vol.  $N 88 W$ . 43 lbs

30.00 Set stake for dist in line

40.13 found stone cent-sec 10, being  
5.15 S. of stone in line N.E. part of this line is  $N 89\frac{3}{4} E$ 

1859

E. line

Start at stone cent Sec 10

B.S. on stone 5.15 N.

Offset 20' W.

 $S 5\frac{1}{4} E$ Produce this line south. found  
was running too far E.Meas. W. 20' from stone at  
SW  $\angle$  of 80 c.Produce S. ( $S 5\frac{1}{4} E$ )

8.43 cent Sidney pike

20.28 stone SW  $\angle$  80 c30.59 at fence post in line with old rail  
fence to W. which fence has been  
in present line for 30 to 40 yrs  
according to Thos. Terrell's statement.30.73 stone under fence, supposed to be  
 $\angle$  stone.

S. line - random

Set N. 40'  $S 88\frac{3}{4} W$ at pike - came out  $8\frac{1}{2}' N$  of stone as set $40 - 8\frac{1}{2} = 31\frac{1}{2}'$  searchingor figuring from stone or SE  $\angle$  this  
will make offset 49' N. & something $49 - 8\frac{1}{2} = 40$  $40 \div 4 = 10$  $49 - 10 = 39$ 

this comes to the fence row

30.76

30.73

 $.03 =$  W. line longer than E line $.03 \div 4 = .01 + 30.73 = 30.74$  length of  
dividing line.

W. W.



~~Cut off 30 a from E end  
by meas W. 7.80 from S.E. L.~~

~~Set stone, W. 10" N. Oak, N x 7 W, 67 lbs.~~

Cut off 30 a. from  
E side of place

Less E. line,  $30.59 + 5.15 = 35.74$

$360 \div 35.74 = 840$

Meas. W. 840 from stone S.E. L.  
Butts. Set stone at 6" Wild cherry  
corn-<sup>er</sup>

Meas W. 840 from S.E. L., set stone

1859

Send statement to L. A. Black  
P.F.D. # 2 Quincy, Ohio

also Fair ground catalogue