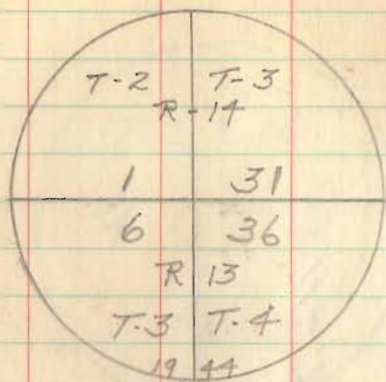


(2)

Rd. 45

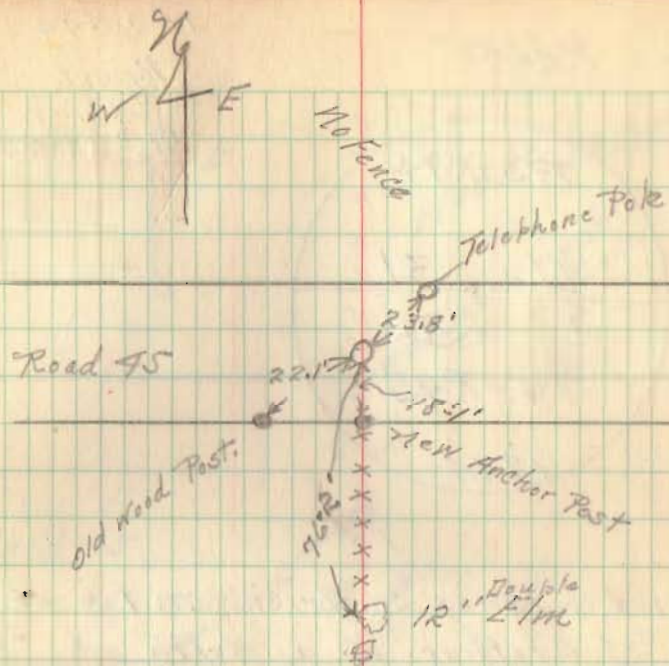
10-9-99  
 Lysert  
 Robbins  
 Mr. Adams



Found Stone <sup>and</sup> Brick - Book 559 P. 65  
 Set Concrete Mon. 3'-6" long  
 Top 12" Below Surface of road

See Field Book 559 p. 65

25



INDEXED ON MAP

2639

Pleasant &  
 Miami Turps.

INDEXED ON MAP

Found 31 Dec. 1968  
 C.N.