

Rd 11 from Rd 13
North to Rd 20B
Staked 60' R/W

See pgs. 28

PT 13+17.1 =
~~14+22.2 (old)~~

Hubs set

New curve
data -
June 6, 1949 CRK

PC 13+69.2 Hubs set

PT 13+18.7 Hubs set

Monuments set
May 31, 1950

PC 11+69.8 Hubs set

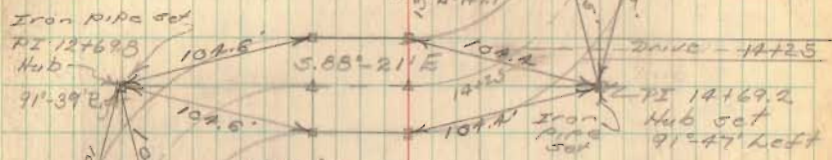
5+00 Hubs set

1+00 Hubs set for R/W mon.

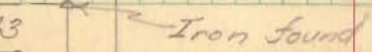
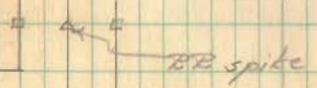
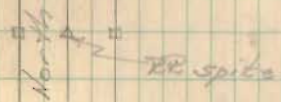
0+00

17 June 47

Sta.	Dist	Defl.	Total Defl.
PC 13+69.2			
14+00	30.8	9°34.6'	9°34'
+25	25	7°46'	17°20'
+50	50	"	25°06'
+75	75	"	32°52'
+100	100	51.1'	40°38'
PT 15+17.1	17.1	5°-15.5'	45°53.5'



Sta	Dist	Defl.	Total Defl.
PC 11+69.8			
12+00	30.2	9°17'48"	9°18'
+25	25	7°41'45"	17°00'
+50	50	"	24°41'
+75	75	"	32°23'
13+00	100	"	40°05'
+18.7	18.7	5°45'23"	45°50'



Party -
C. Keyser
B. Hoines
O. Shirk
N. Keyser

54

3590

INDEXED ON MAP

Rd. 43

Rd 11 (contd)

See pg. 28.

30400 Hubs set

Monuments set
May 30, 1950

25400 Hubs set

20400 Hubs set

pt 15+17.1 =

~~17.1~~ Hubs set

56

See page 15 for survey
of Rd 11 north of
Rd. 208.

Rd 208

Steel car
post

tel. pole

Steel car. post

Hub placed on top
of Iron

110°-08' N.
114° N

RR spike

RR spike

