

FB 707

SURVEY OF T.R. 229
FOR
PLEASANT TOWNSHIP TRUSTEES

STA 54+75.77 1" ϕ SET ANGLE LT
(1° 46' 30") (1° 45' 40")
(3° 32' 00") (3° 31' 20")

STA. 49+95.5 1" ϕ SET ANGLE RT
(4° 34') (4° 31' 20")
(9° 07') (9° 04' 40")
(4° 33' 30") (4° 31' 20")
(9° 07') (9° 03' 40")

39+21

38+24

STA. 35+53.7 1/2" ϕ FD ANGLE RT
(5° 51' 40") (5° 50' 30")
(11° 43' 40") (11° 41' 40")

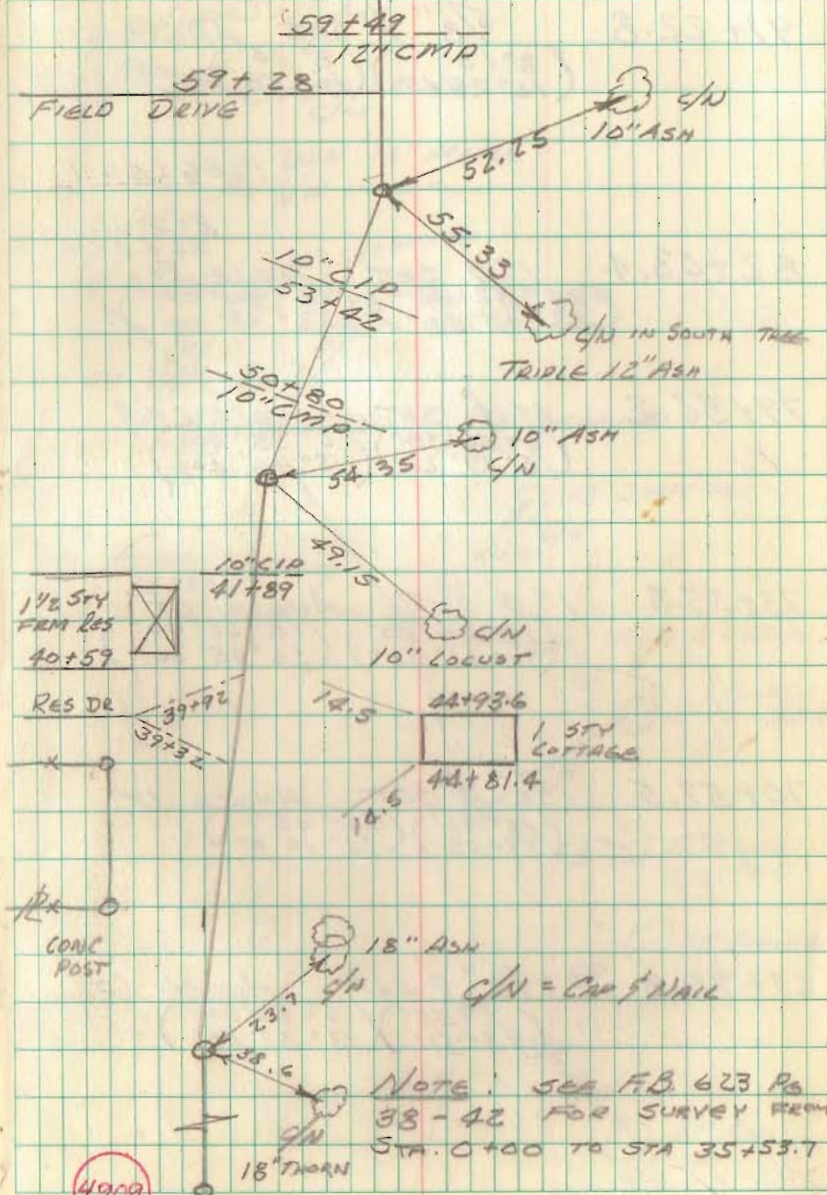
STA. 31+38.9 1" ϕ SET

3/16/75
meas. 1/16" dia

GEESLIN RICKETTS 4/14/71

T.R. 229 PLEASANT TWP.

67



FB 707

91+22.8 $\frac{5}{8}$ " ϕ SET ANGLE RT
 ($8^{\circ}13'$) ($8^{\circ}14'$) $87+28.5$
 ($16^{\circ}25'40''$) ($16^{\circ}28'$) $88+98$

~~86+66.4~~

RES DR
~~86+48.0~~

82+03.4 1" ϕ SET ANGLE RT
 ($16^{\circ}52'40''$) ($16^{\circ}51'00''$)
 ($33^{\circ}45'00''$) ($33^{\circ}48'00''$)

79+36.2 1" ϕ SET ANGLE LT
 ($6^{\circ}54'30''$) ($6^{\circ}53'30''$)
 ($13^{\circ}49'26''$) ($13^{\circ}46'40''$)

73+35.3 1" ϕ SET ANGLE LT
 ($18^{\circ}24'40''$) ($18^{\circ}22'40''$)
 ($36^{\circ}48'40''$) ($36^{\circ}45'20''$)

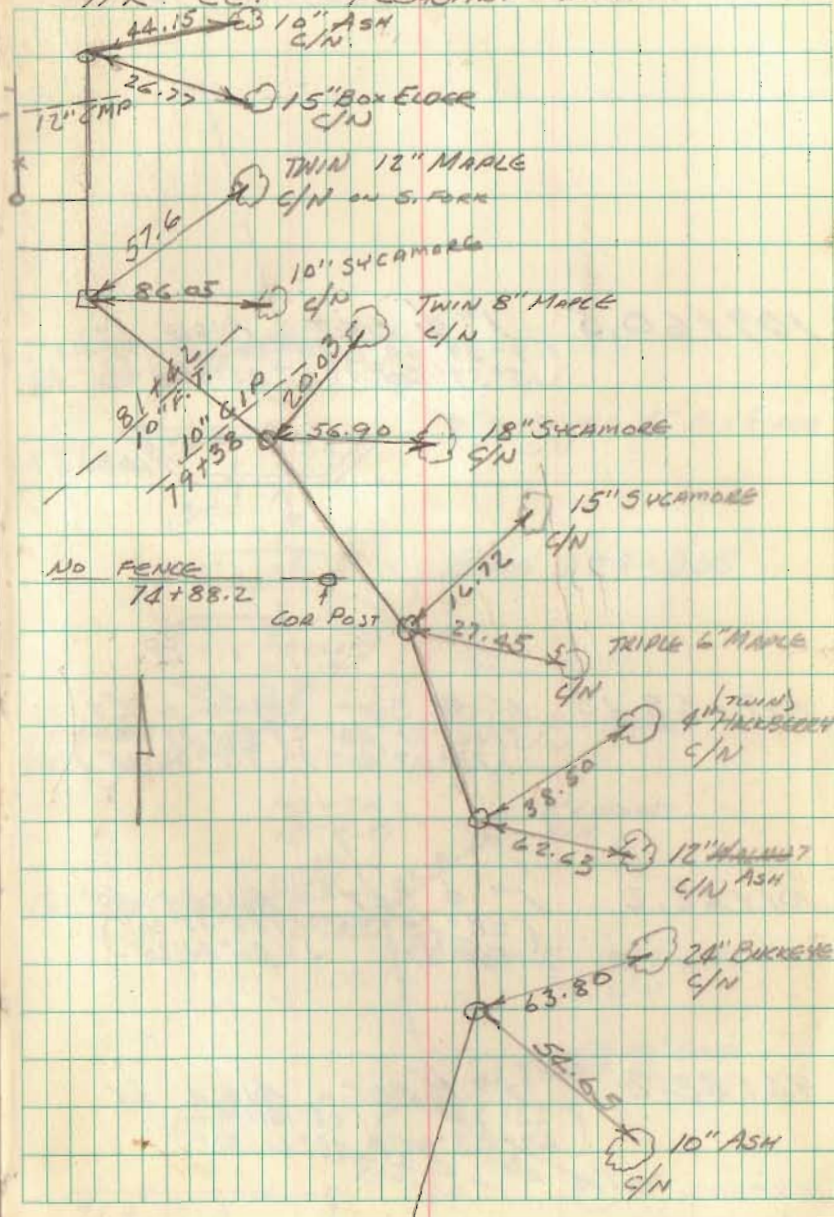
70+57.5 $\frac{5}{8}$ " ϕ SET ANGLE LT
 ($16^{\circ}34'$) ($16^{\circ}35'$)
 ($33^{\circ}08'$) ($33^{\circ}10'20''$)

67+90.8 $\frac{5}{8}$ " ϕ SET ANGLE LT.
 ($6^{\circ}55'$) ($6^{\circ}56'20''$)
 ($13^{\circ}51'$) ($13^{\circ}52'40''$)

SEESLIN 4/14/71
 RICKETS

68

T.R. 229 PLEASANT TWP



FB 707

T.R. 229 PLEASANT TOWNSHIP

109+60.5 1" ϕ SET ANGLE LT.
 (7° 59' 40") (7° 58' 30")
 (5° 59' 20") (5° 57' 00")

108+57

107+68.15 1" ϕ SET ANGLE RT
 (36° 31' 40") (36° 33' 30")
 (73° 03' 20") (78° 06' 20")

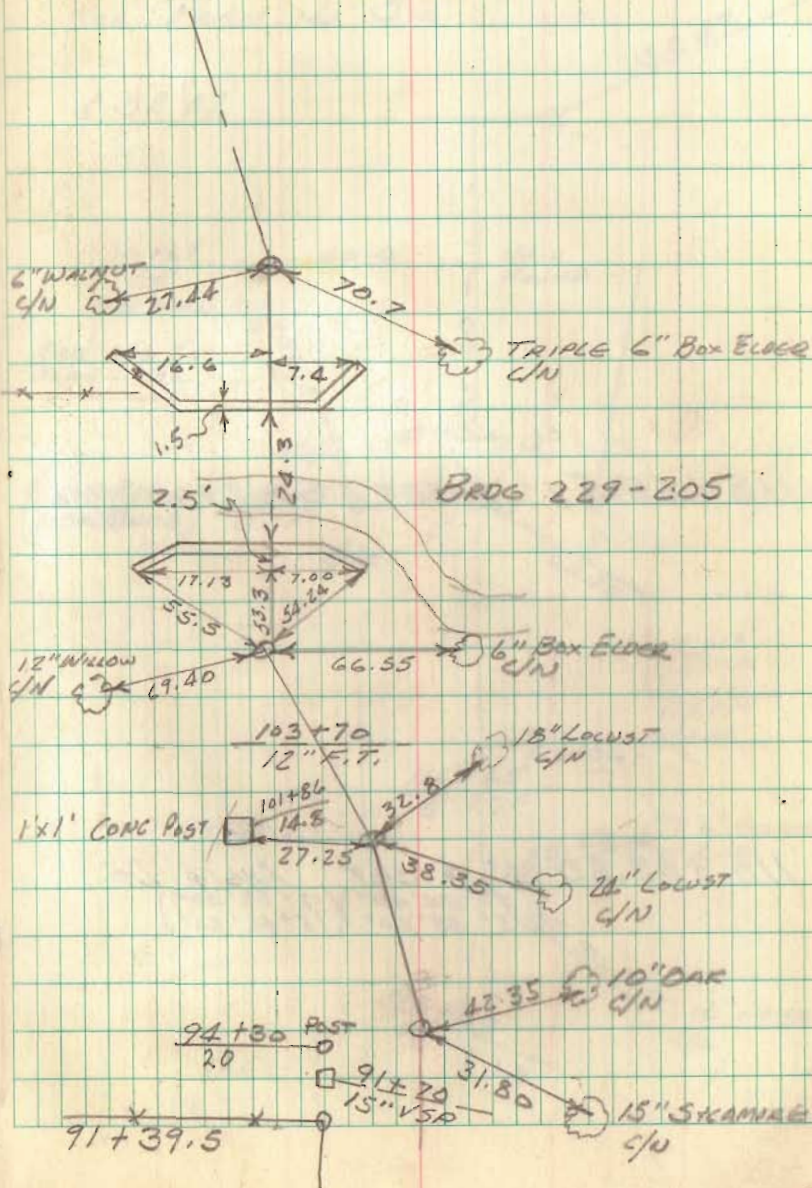
101+62.2 1" ϕ SET ANGLE LT
 (28° 18' 30") (28° 17' 20")
 (56° 37') (56° 34' 20")

94+48.2 1" ϕ SET ANGLE LT
 (23° 32') (23° 30')
 (47° 03' 40") (47° 00' 40")

GUESLIN
NICHOLS

4/15/71

69



FB 707

T.R. 229 PLEASANT TOWNSHIP

118+65.5 1" ϕ SET = STA 2+00 STATE R/W

115+02.30 1" ϕ SET ANGLE LT
 (7° 54' 40" / 15° 49' 00") (7° 53' 00" / 15° 46' 20")

GESSLIN
 NICHOLS
 RICKETTS

4/20/71

70

SEE PLAN L-36

