

WONDERS DESCRIPTION

The following described real estate situated in the Township of Pleasant, County of Logan, State of Ohio and being a part of the East Half of Section 9, Town 2, Range 14, B. M. R. S. and being more particularly described as follows:

Beginning at a stone at the southeast corner to Section 9 and being Station 417 + 35 of the survey of S. R. No. 235 (formerly S. R. No. 69 - I.C.H. No. 27) as shown on Plan L-19, Page 3, Logan County Engineers Office;

Thence with the south line of Section 9, N. 84° 53' W. 2,260.50 feet to a stone at the southeast corner to Richard A. Russell's present 109.14 Acre tract, passing the northwest corner to Chloe E. Trout's present 80.00 Acre tract in Section 8, Town 2, Range 14, B.M.R.S. at 1,337.82 feet;

Thence with Russell's east line and an east line of Robert P. Shoe, N. 5° 22.3' E. 2,647.94 feet to a wood corner post, passing through an iron bar at Russell's northeast corner at 2,207.34 feet;

Thence with a south line of Shoe, S. 85° 59' E. 773.90 feet to a wood corner post, a southeast corner to Shoe;

Thence with an east line of Shoe, N. 20° 27' E. 799.20 feet to a R. R. Spike in the centerline of S. R. No. 47;

Thence with the centerline of S. R. No. 47, S. 85° 35' E. 441.20 feet to P. I. Station 267 + 29.70 as shown on Plan L-20, Page 5, Logan County Engineers Office;

Thence again with the centerline of S. R. No. 47, N. 77° 02' E. 688.56 feet to a point at the northwest corner to Nellie L. Lawrie's present 1.10 Acre tract;

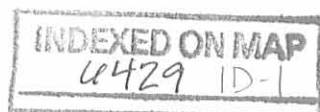
Thence with Lawrie's west line, S. 2° 56' W. 276.70 feet to an iron pipe, passing through an iron pipe at 31.20 feet;

Thence with Lawrie's south line, S. 86° 50' E. 154.50 feet to a point in the centerline of S. R. No. 235, passing through an iron pipe at 124.49 feet;

Thence with the centerline of S. R. No. 235, S. 4° 52' W. 712.50 feet to a stone at the northeast corner of the southeast quarter of Section 9 and being Station 444 + 04 as shown on Plan L-19, Page 3;

Thence continuing with the centerline of S. R. No. 235 and the east line of said Section 9, S. 5° 07' W. 2,669.00 feet to the place of beginning, containing 163.434 Acres, more or less.

Reserving unto the State of Ohio a perpetual easement and right of way for Highway or Road Purposes over a strip 30.0 feet in width west of the centerline



(2)

of S. R. No. 235 as described in Deed Volume 141 Page 74 (9-15-1927), containing 2.52 Acres, more or less.

I hereby certify that this is a correct and accurate description of said property as prepared by me from existing records.

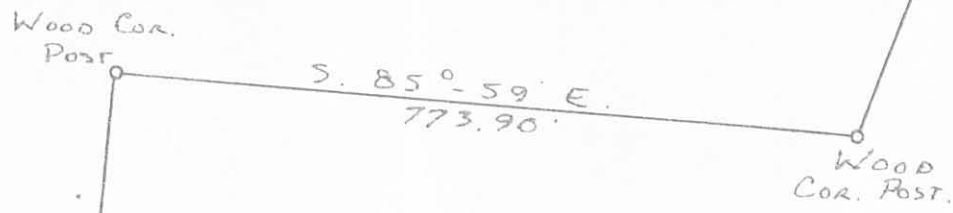
Daniel E. Gilbert

Daniel E. Gilbert, P.S.
Reg. Sur. No. 5402
1041 N. Main St.
Bellefontaine, Ohio 43311

INDEXED ON MAP
6429 1D-2



ROBERT P. SHOE ETUX
38.08 Ac.



5/8" IRON
1/8" BAR

2,647.94'

163.434 Ac.

RICHARD A. RUSSELL ETAL
109.14 Ac.

N. 5° 22.3' E.
2,207.34'

SECTION 9 T.2 R.14
SECTION 8 T.2 R.14 N. 84° 53' W.

MINERVA WONDERS PROPERTY
SECTION 9 T.2 R.14 B.M.R.S.
PLEASANT TOWNSHIP
LOGAN COUNTY, OHIO
JULY 14, 1980

SCALE: 1"=200'

CHLOE E. TROUT

80.00 Ac.

S. R. No. 235
SECTION 9 T.2 R.14
SECTION 3 T.2 R.14

6429 IP

INDEXED ON MAP

STONE
S.E. COR. TO
SEC. 9 T.2 R.14
STA. 417+35.0
PLAN L-19 PAGE 3

CALCULATED AND PLATED BY:
DANIEL E. GILBERT, P.S.
REG. SUR. NO. 5402
1041 N. MAIN ST.
BELLEFONTAINE, OHIO 43311