

Lee Surveying and Mapping Co.



CLAYTON M. LEE, P.S.
JEFFREY I. LEE, P.S.

855 East Sandusky Avenue
Bellefontaine, Ohio 43311
Phone 593-5780



Farm Surveys • Lot Surveys • Topography • Subdivisions • Construction Layout

PEOPLES BUILDING AND LOAN

Lying in the southeast corner of Section 9, T-1, R-8, Pleasant Township, Logan County, Ohio.

Being out of that 27 acre tract deeded and described in Volume 404, Page 627 of the Logan County Records of Deeds, more particularly described as follows:

Beginning at an iron rod found on the center-line of County Road 34 marking the southeast corner of said Section 9.

THENCE, with the south line of said Section 9, S 89°-42' W, a distance of 702.4 feet to an iron rod found marking the southeast corner of the Leiss 54.35 acres (Volume 314, Page 779).

THENCE, with the east line of said 54.35 acres, N 0°-02' E, a distance of 235.32 feet to an iron rod.

THENCE, S 89°-52' E, a distance of 702.79 feet to a railroad spike set on the center-line of County Road 34 (East line of Section 9).

THENCE, with said center-line, S 0°-08' W, a distance of 230.00 feet to the point of beginning.

Containing 3.753 acres.

Subject, however, to a 20 foot wide easement running adjacent to and the full length of the south line. (Volume 398, Page 42).

Prior deed reference: Volume 404, Page 627.

Prepared by:

72031D

Clayton M. Lee

Clayton M. Lee
Registered Surveyor No. 6181
September 19, 1984

INDEXED ON MAP

CLARENCE LEISS, 54.35 AC.
VOL. 314, PG. 779

N 0°-02' E

235.32'

SET FROM MAP

SCALE
1" = 100'

3.753 ACRES

S 89°-52' E

702.79'

PEOPLES B. & L.
27 AC., VOL. 404, PG. 627
23,247 AC. REMAINING

20' EASEMENT
VOL. 398, PG. 42

FENCE

702.4'

S 89°-42' W

SEC. 16

SEC. 9

SEC. COR

230.00'

S 0°-08' W

CO. RD. 34 & SEC. LINE

FOUND
1 ROD

SEC. 15

SEC. 10

SECTION LINE

SURVEY OF 3.753 ACRES OUT OF
THE PEOPLES BUILDING & LOAN
27 ACRE TRACT (VOL. 404, PG. 627)
SE CORNER OF SEC. 9, T-1, R-8
PLEASANT TWP, LOGAN COUNTY, OHIO

By: Clayton M. Lee

CLAYTON M. LEE
REG. SURVEYOR 6181
SEPT. 12, 1984.

7203 | P

INDEXED ON MAP

L-1183-2

REC'D 11-23-11 SMY OK

Lee Surveying and Mapping Co., Inc.

Land Surveys • Topography • Subdivisions • Construction Layout

117 N. Madriver St.
Bellefontaine OH 43311



Phone: (937) 593-7335
Fax: (937) 593-7444
surveys@lsminc.us

KLINGELHOFER 0.869 ACRE

Lying in Section 9, Town 1, Range 8, Pleasant Township, Logan County, Ohio.

Being out of the Ross Klingelhofer and Mandy Klingelhofer 3.753 acre tract as deeded and described in Official Record 996, Page 48 of the Logan County Records of Deeds and being more particularly described as follows:

Beginning on a 3/4 inch iron bar found in a monument box on the southeast corner of Section 9 and the center-line of County Highway 34.

THENCE, with the south line of Section 9 and the north lines of the Shawn Long 1.500 acre tract (O.R. 369, Pg. 511) and the Tary E. Furrow 57.568 acre tract (O.R. 498, Pg. 718, Tract II), S 89°-42'-00"W, a distance of 472.40 feet to a 5/8 inch iron rod set, passing a 5/8 inch iron rod found at 25.00 feet.

THENCE, N 00°-13'-10"E, a distance of 80.11 feet to a 5/8 inch iron rod set, passing a 5/8 inch iron rod set on the center-line of a 15 feet wide ingress/egress easement at 67.56 feet.

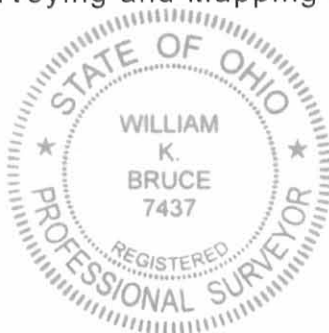
THENCE, N 89°-42'-00"E, a distance of 472.40 feet to a MAG nail set on the east line of Section 9 and the center-line of County Highway 34, passing a 5/8 inch iron rod set at 447.40 feet.

THENCE, with the east line of Section 9 and the center-line of County Highway 34 (50 feet wide), S 00°-13'-10"W, a distance of 80.11 feet to the point of beginning, passing a MAG nail set on the center-line of a 15 feet wide ingress/egress easement at 17.18 feet.

Containing 0.869 acre, of which 0.046 acre is within the highway right-of-way.

Property is subject to any and all previous easements and rights-of-way of record.

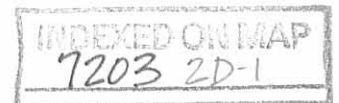
The basis for bearings is the south line of Section 9, being S 89°-42'-00"W, and all other bearings are from angles and distances measured in a field survey by Lee Surveying and Mapping Co., Inc. on November 21, 2011.



Description prepared by:

William K. Bruce

William K. Bruce
Professional Surveyor 7437
November 21, 2011



11831111

ORIGINAL STAMP IN GREEN

REC'D 11-23-11 SWM OK

Lee Surveying and Mapping Co., Inc.

Land Surveys • Topography • Subdivisions • Construction Layout

117 N. Madriver St.
Bellefontaine OH 43311



Phone: (937) 593-7335
Fax: (937) 593-7444
surveys@lsminc.us

KLINGELHOFER 15 FEET WIDE INGRESS/EGRESS EASEMENT

Lying in Section 9, Town 1, Range 8, Pleasant Township, Logan County, Ohio.

Being a 15 feet wide ingress/egress easement over a portion of the Ross Klingelhofer and Mandy Klingelhofer 3.753 acre tract as deeded and described in Official Record 996, Page 48 of the Logan County Records of Deeds and being more particularly described as follows:

Commencing on a 3/4 inch iron bar found in a monument box on the southeast corner of Section 9 and the center-line of County Highway 34.

THENCE, with the east line of Section 9 and the center-line of County Highway 34 (50 feet wide), N 00°-13'-10"E, a distance of 62.93 feet to a MAG nail set at the TRUE POINT OF BEGINNING.

THENCE, with the center-line of said 15 feet wide ingress/egress easement, N 89°-44'-17"W, a distance of 472.38 feet to a 5/8 inch iron rod set at the terminus of said easement.

Property is subject to any and all previous easements and rights-of-way of record.

The basis for bearings is the south line of Section 9, being S 89°-42'-00"W, and all other bearings are from angles and distances measured in a field survey by Lee Surveying and Mapping Co., Inc. on November 21, 2011.

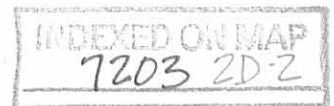
Description prepared by:

William K. Bruce
Professional Surveyor 7437
November 21, 2011

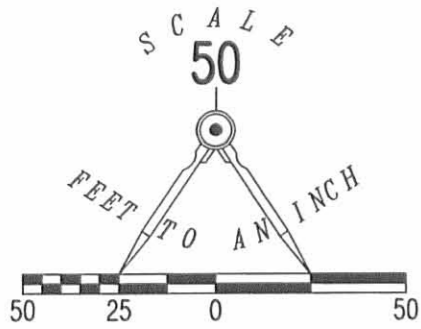


ORIGINAL STAMP IN GREEN

11831111



REC'D 11-23-11 smy/ah



LEGEND:

- ⊙ 3/4 INCH IRON BAR FOUND IN MONUMENT BOX
- ⊗ RAILROAD SPIKE FOUND
- MAG NAIL SET
- 5/8 INCH IRON ROD FOUND
- 5/8 INCH IRON ROD SET WITH PLASTIC CAP STAMPED "LSM7437"

ROSS KLINGELHOFER AND
MANDY KLINGELHOFER
3.753 ACRES
O.R. 996, PG. 48

SECTION 9, TOWN 1, RANGE 8
230.00'

SECTION 16, TOWN 1, RANGE 8

TARY E. FURROW
57.568 ACRES
O.R. 498, PG. 718
TRACT II

**SURVEY OF 0.869 ACRE OUT OF THE
ROSS KLINGELHOFER AND
MANDY KLINGELHOFER
3.753 ACRE TRACT
OFFICIAL RECORD 996, PAGE 48
SECTION 9, TOWN 1, RANGE 8
PLEASANT TOWNSHIP
LOGAN COUNTY, OHIO**

SHAWN LONG
1.500 ACRES
O.R. 369, PG. 511

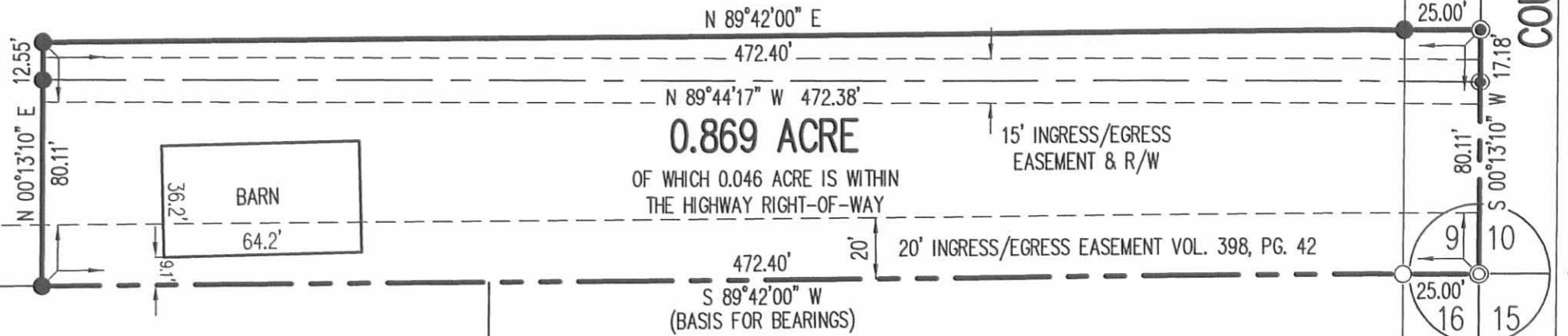
SURVEYED BY:



William K. Bruce
WILLIAM K. BRUCE
PROFESSIONAL SURVEYOR 7437
NOVEMBER 21, 2011

COPYRIGHT 2011 BY:
LEE SURVEYING & MAPPING CO., INC.
117 North Madriver Street
BELLEFONTAINE, OHIO 43311
(937) 593-7335
WWW.LSMINC.US
surveys@lsminc.us

KSS D1111 11831111 L-1183-3



COUNTY HIGHWAY 34 (50')

2 WORKING DAYS
BEFORE YOU DIG
CALL TOLL FREE **800-362-2764**
OHIO UTILITIES PROTECTION SERVICE

INDEXED ON MAP
7203 ZP