

Rd. 210 Pleasant Twp.
 Sta. Ref. F.B. 6001 pgs. 71 & 72
 Dug for hubs @ 0+00 Fd.
 17+57 no luck
 22+19 Fd. -

0.35'
 22+35.5 0.65' Stone
 0.1'
 10.50
 22+19 462.00' 17+57

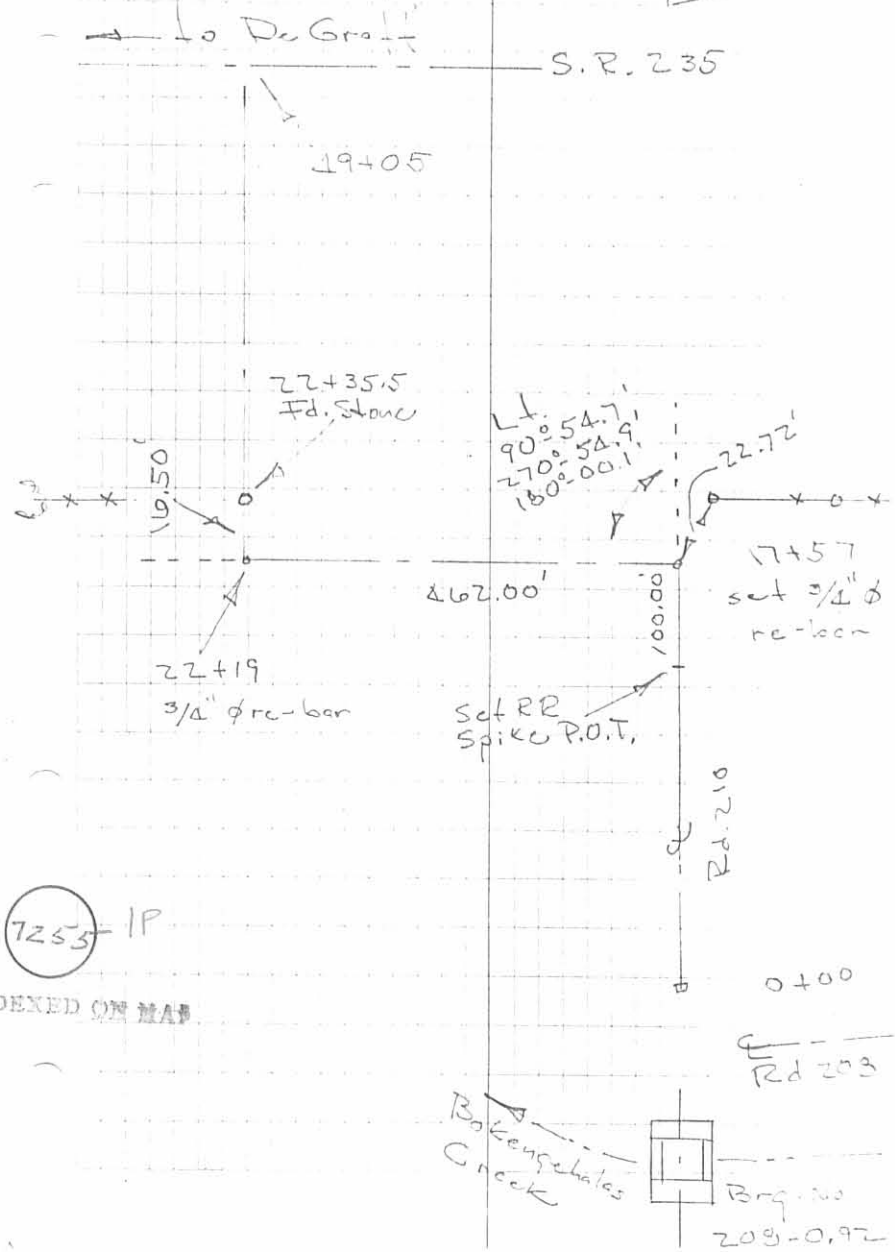
22+19 Fd. black ϕ in clay - decomp. remains of old hub, set $\frac{3}{4}$ " ϕ re-bar

17+57 Searched no luck, set $\frac{3}{4}$ " ϕ re-bar

e.d.m. 1757.03'

0+00 Fd. 24" hub, placed $\frac{3}{4}$ " ϕ re-bar

Nichols Dill
 M. Park J. Godwin
 2 & 3 July 1984
 80° - Sunny
 T-100

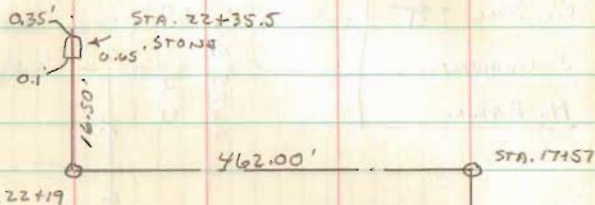


FB 709

T.R. No. 210 PLEASANT TWP.

STA.

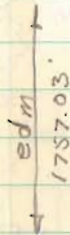
REF. F.B. 601 PAGES 71-72



22+35.5 STONE

22+19.0 FD. BLACK ϕ IN CLAY - DECOMP. REMAINS OF OLD HUB, SET $\frac{3}{4}$ " ϕ REBAR.

17+57 SEARCHED FOR HUB, NO LUCK, SET $\frac{3}{4}$ " ϕ REBAR.

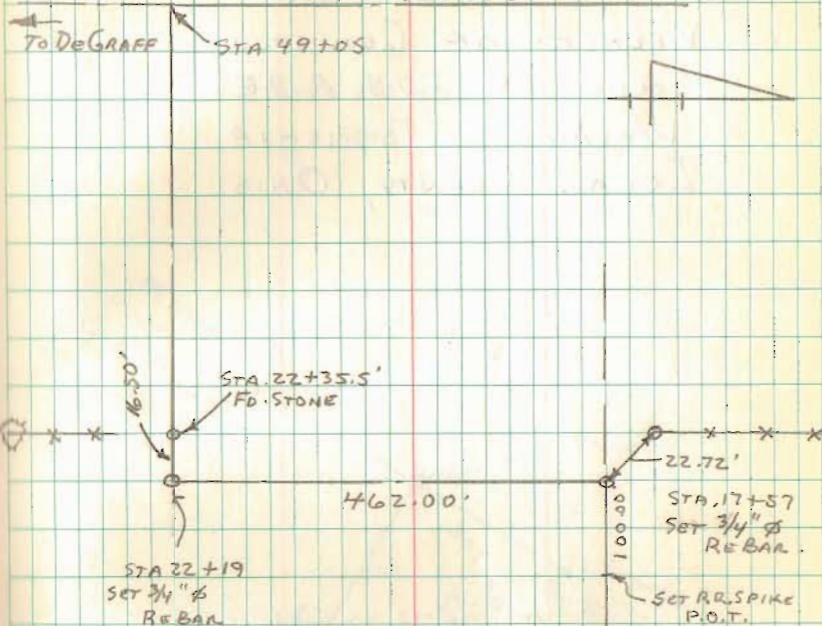


0+00 FD. 24" HUB, PLACED $\frac{3}{4}$ " ϕ REBAR

C. NICHOLS
T - C. DILL
M. PARK
J. GODWIN

JULY 2, 3, 1984
80° - SUNNY
T-162

S.R. 235



0+00
P.T.R. 208

BOLENGHALAS
CREEK



BRIDGE No.
208-0.92

7255