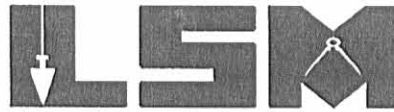


ZEID 12-20 05 EMM OL

# Lee Surveying and Mapping Co., Inc.

Land Surveys • Topography • Subdivisions • Construction Layout

117 N. Madriver St.  
Bellefontaine OH 43311



Phone: (937) 593-7335  
Fax: (937) 593-7444

**1975-2005 - 30 YEARS OF EXCELLENCE**

**PULFER  
66.494 ACRES**

Lying in Section 5, Town 1, Range 8, Salem Township, Shelby County and Pleasant Township, Logan County, Ohio.

Being out of the Willis N. Pulfer and Emma Sue Pulfer original 70.934 acre tract as deeded and described in Volume 407, Page 41, Tract I of the Shelby County Records of Deeds and all of the Willis N. Pulfer original 1.00 acre tract as deeded and described in Volume 266, Page 51 of the Logan County Records of Deeds and being more particularly described as follows:

Beginning at a 5/8 inch iron rod found in a monument box at the northwest corner of the southwest quarter of Section 5 on the intersection of center-lines of Township Road 19 (Tawawa Maplewood Road) and Township Road 63 (Lefevre Road).

THENCE, with the north line of the south half of Section 5 and the center-line of Township Road 63 (40 feet wide-50 feet proposed), N 88°-32'-10"E, a distance of 2618.82 feet to a railroad spike set at the northwest corner of the southeast quarter of Section 5 at the TRUE POINT OF BEGINNING.

THENCE, with the north line of the south half of Section 5 and the center-line of Township Road 63, N 88°-32'-10"E, a distance of 444.89 feet to a railroad spike found.

THENCE, S 38°-04'-19"E, a distance of 327.89 feet to a 5/8 inch iron rod found, passing a 5/8 inch iron rod found at 24.91 feet.

THENCE, S 0°-55'-29"E, a distance of 777.63 feet to a 5/8 inch iron rod found.

THENCE, N 87°-29'-23"E, a distance of 535.84 feet to a 5/8 inch iron rod found.

THENCE, with the west line of the Indiana & Ohio Railway Company (Shelby County Vol. 355, Pg. 146), S 33°-03'-49"E, a distance of 267.15 feet to a 5/8 inch iron rod set on the east line of Shelby County and the west line of Logan County.

THENCE, with the east line of Shelby County and the west line of Logan County and the west line of the David W. Hoying 40 acre tract (O.R. 495, Pg. 273, Tract I), S 1°-26'-21"E, a distance of 68.76 feet to a 5/8 inch iron rod set.

THENCE, with the south line of the said 40 acre tract, N 88°-29'-55"E, a distance of 42.31 feet to a 5/8 inch iron rod set.

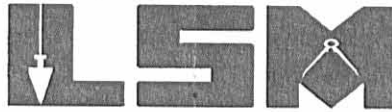
THENCE, with the west line of the aforesaid Indiana and Ohio Railway Company (66 feet wide), S 33°-03'-49"E, a distance of 778.76 feet to a 8 inch concrete post found, passing a 5/8 inch iron rod set at 776.76 feet.

**INDEXED ON MAP**  
7526 1D-1

# Lee Surveying and Mapping Co., Inc.

Land Surveys • Topography • Subdivisions • Construction Layout

117 N. Madriver St.  
Bellefontaine OH 43311



Phone: (937) 593-7335  
Fax: (937) 593-7444

## 1975-2005 - 30 YEARS OF EXCELLENCE

THENCE, with the north line of the David W. Hoying original 20 acre tract (O.R. 495, Pg. 273, Tract II, Paragraph I), S 88°-28'-38"W, a distance of 450.66 feet to a 5/8 inch iron rod set on the west line of Logan County and the east line of Shelby County, passing a 5/8 inch iron rod set at 2.00 feet.

THENCE, with the west line of Logan County, the east line of Shelby County and the west line of the aforesaid 20 acre tract, S 1°-26'-21"E, a distance of 663.73 feet to a point on the south line of Section 5, referenced by a stone found N 56°-19'-27"E, a distance of 0.96 feet.

THENCE, with the south line of Section 5 and the north line of Jay J. Winner 112 acre tract (O.R. 1434, Pg. 213), S 88°-27'-21"W, a distance of 1303.44 feet to a 5/8 inch iron rod set.

THENCE, with the west line of the southeast quarter of Section 5 and the east line of the Lorma Jean Baber 80 acre tract (Vol. 303, Pg. 130), N 1°-34'-03"W, a distance of 2656.61 feet to the point of beginning, passing a 5/8 inch iron rod set at 2636.61 feet.

Containing 66.494 acres, of which 0.208 acre is within the highway right-of-way. There are 62.738 acres in Shelby County and 3.756 acres in Logan County.

The basis for bearings is the north line of the south half of Section 5, being N 88°-32'-10"E, and all other bearings are from angles and distances measured in a field survey by Lee Surveying and Mapping Co., Inc. on November 21, 2005.



ORIGINAL STAMP IN GREEN

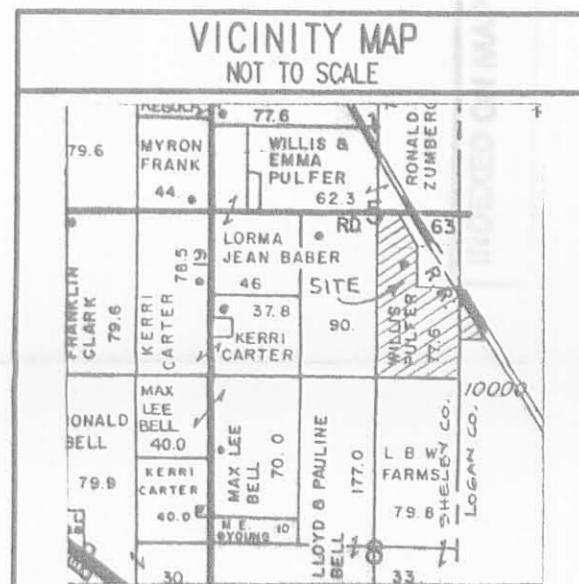
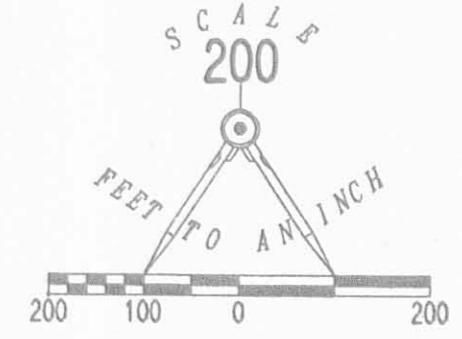
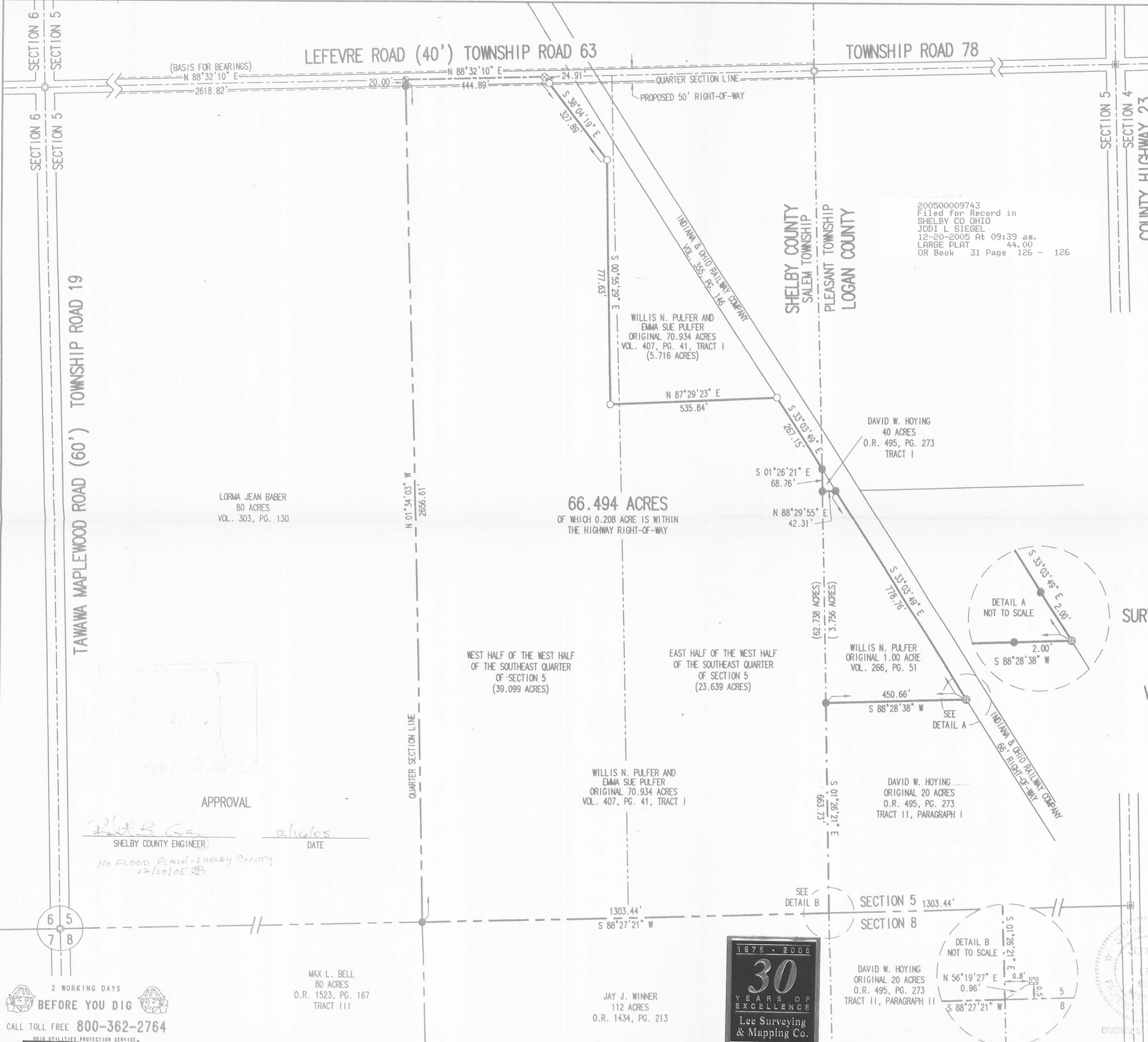
Description prepared by:

A handwritten signature in black ink, appearing to read 'Jeffrey I. Lee'.  
Jeffrey I. Lee  
Professional Surveyor 6359  
November 22, 2005

L-1795



Rec'd 12-20-05 6:11 PM



**SURVEY OF 66.494 ACRES OUT OF THE WILLIS N. PULFER AND EMMA SUE PULFER ORIGINAL 70.934 ACRE TRACT VOLUME 407, PAGE 41, TRACT I SECTION 5, TOWN 1, RANGE 8 SALEM TOWNSHIP SHELBY COUNTY, OHIO AND ALL OF THE WILLIS N. PULFER ORIGINAL 1.00 ACRE TRACT VOLUME 266, PAGE 51 SECTION 5, TOWN 1, RANGE 8 PLEASANT TOWNSHIP LOGAN COUNTY, OHIO**

SURVEYED BY:  
  
 JEFFREY K. LEE  
 PROFESSIONAL SURVEYOR 6359  
 NOVEMBER 21, 2005

COPYRIGHT 2005 BY:  
 LEE SURVEYING & MAPPING CO., INC.  
 117 North Madriver Street  
 BELLEFONTAINE, OHIO 43311  
 (937) 593-7335

KSR D1105 1795115 L-1795-2

LORMA JEAN BABER  
 80 ACRES  
 VOL. 303, PG. 130

**66.494 ACRES**  
 OF WHICH 0.208 ACRE IS WITHIN  
 THE HIGHWAY RIGHT-OF-WAY

WEST HALF OF THE WEST HALF  
 OF THE SOUTHEAST QUARTER  
 OF SECTION 5  
 (39.099 ACRES)

EAST HALF OF THE WEST HALF  
 OF THE SOUTHEAST QUARTER  
 OF SECTION 5  
 (23.639 ACRES)

WILLIS N. PULFER AND  
 EMMA SUE PULFER  
 ORIGINAL 70.934 ACRES  
 VOL. 407, PG. 41, TRACT I

DAVID W. HOYING  
 ORIGINAL 20 ACRES  
 O.R. 495, PG. 273  
 TRACT II, PARAGRAPH I

DAVID W. HOYING  
 ORIGINAL 20 ACRES  
 O.R. 495, PG. 273  
 TRACT II, PARAGRAPH II

JAY J. WINNER  
 112 ACRES  
 O.R. 1434, PG. 213

MAX L. BELL  
 80 ACRES  
 O.R. 1523, PG. 167  
 TRACT III

APPROVAL

SHELBY COUNTY ENGINEER  
 DATE 12/16/05  
 No FLOOD PLAIN - SHELBY COUNTY  
 12/20/05

2 WORKING DAYS  
**BEFORE YOU DIG**  
 CALL TOLL FREE 800-362-2764  
 OHIO UTILITIES PROTECTION SERVICE



INDEXED ON MAP  
 7526 1P

# Lee Surveying and Mapping Co.



Farm Surveys • Lot Surveys • Topography • Subdivisions • Construction Layout

855 EAST SANDUSKY AVENUE  
BELLEFONTAINE, OHIO 43311

(513) 593-5780

CLAYTON M. LEE, P.S.  
JEFFREY I. LEE, P.S.

## PULFER 14.916 ACRE SURVEY

Lying in the north half of the southeast quarter of the southeast quarter of Section 5, T-1, R-8-E, Pleasant Township, Logan County, Ohio.

Being all of that 17.68 acres (Deed), 14.916 acres (Actual) lying east of the D.T. & I. Railroad as deeded and described in Volume 351, Page 325 of the Logan County Records of Deeds and being more particularly described as follows:

Beginning at a railroad spike found on the center-line of County Road 23 (East line of Section 5) a distance of 663.25 feet northerly, along said center-line from the southeast corner of said Section 5. This beginning point being the southeast corner of grantor's land.

THENCE, with the north line of J.R. Fielder's 18 acre tract, (Volume 364, Page 349, Tract II), N 89°-13'-40" W, a distance of 776.01 feet to the south side of a concrete gate post on the east right-of-way line of the D.T. & I. Railroad.

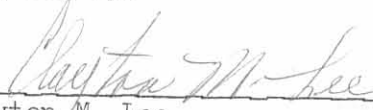
THENCE, with said east right-of-way line, N 30°-50' W, a distance of 777.57 feet to a 5/8" iron rod set on the south line of Fielder's 39.73 acre tract (Tract 1).

THENCE, parallel to the the south line of this survey, S 89°-13'-40" E, a distance of 1186.19 feet to a railroad spike set on the center-line of County Highway 23.

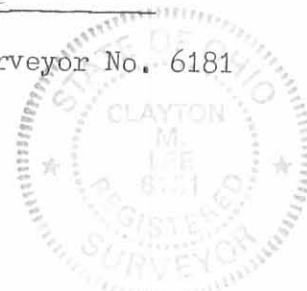
THENCE, with said center-line (East line of Section 5), S 1°-00'-20" W, a distance of 662.25 feet to the point of beginning.

Containing 14.916 acres.

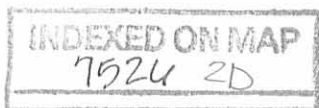
Prepared by:

  
Clayton M. Lee  
Registered Professional Surveyor No. 6181  
March 29, 1986

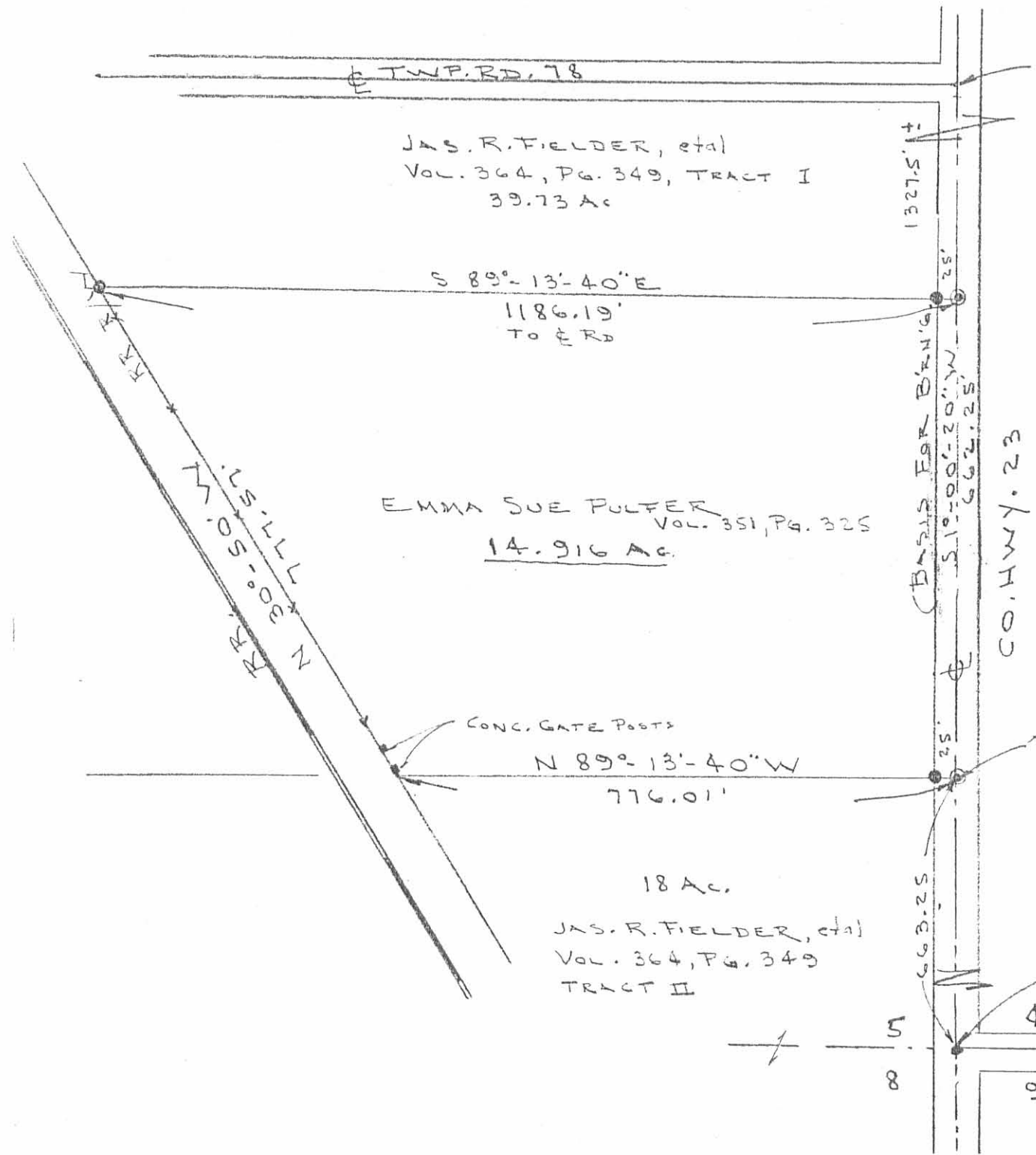
This description prepared from an actual field survey.



ORIGINAL STAMP IN GREEN



L-1378



STA. 1534 97.06



SCALE = 1" = 200'

- = 5/8" IRON ROD SET
- ⊙ = RR SPIKE SET

SURVEY OF THE EAST PART (ALL OF VOL. 351, PG. 325) OF THE PULFER 17.68 AC. (DEED), 14.916 AC. (ACTUAL) IN THE NORTH 1/2 OF SE 1/4 OF THE SE 1/4 OF SEC. 5, T-1, R-8-E, PLEASANT TWP., LOGAN CO., OHIO

By: Clayton M. Lee  
 CLAYTON M. LEE  
 REG. PROF. SURVEYOR 6181  
 MARCH 27, 1986

SEC. CORNER STA. 127+44.04  
 CO. HWY. STA. FB. 708, PG. 14  
 DR'G. X-23C



INDEXED ON MAP  
 75262P