

11th Nov 4th 1829

Survey No 123

8235

Surveyed 8 acres of land for John Stewart. - Beginning at a stake, near a bur oak stump, corner to John Lingrell's land thence N 20 W pacing a hickory at 20 poles, 25 poles to a large white oak - thence S 70 W 51.2 poles to a stake
 thence S 20 E 25 poles to a stake - thence N 70 W 51.2 poles to the beginning being part of Jesse Davis's Survey or 11492
 Thomas and Isaac Willett's } 8 A white oak beginning
 James W. Garrison

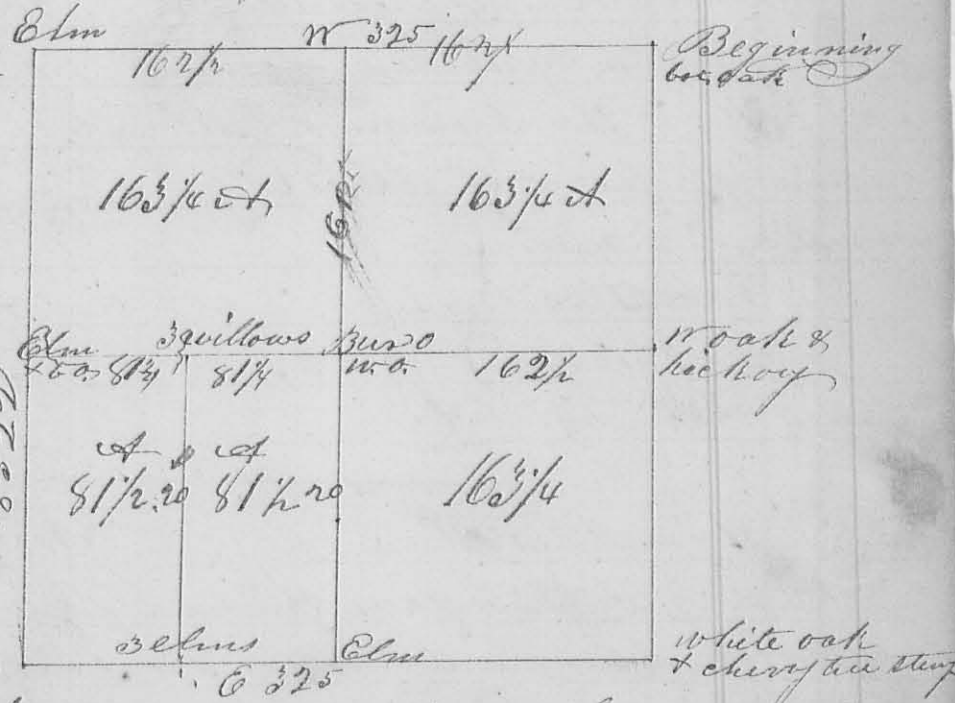
11th Nov 17th 1829

Survey No 124

8236

Surveyed for Robert Humphreys and others - Beginning at the N.E. corner of section 1 of Town 2 Range 11 W. 18th T. 2. Original corner a bur oak standing 18 in. diam. S 38 E 1/2 miles distant thence west 325 poles to the N.W. corner of said sec. found roots in the place of the original corner trees, and marked an elm sucker. thence south 322 poles to the south west corner of the sec. a white oak 18 in. diam. S 78 W 75 L. dist thence east 325 poles to the S.E. corner a white oak 12 inch diam. east 6 L. a cherry tree stump west 8 L. dist.

1st Division line begins at a point in the west line 161 poles from each corner an elm and bur oak standing together north 11 L. thence East crossed a br. at 4 poles, 8 1/2 poles marked 3 small willows on the W. side



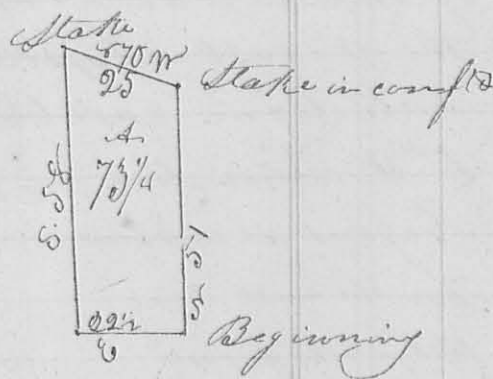
east bank of buckanjahala, 162 1/2 poles to the centre of the sec. a bur oak 15 in. diam. S 31 E 15 L. a white oak 16 in. diam west 35 L., 325 poles to the east line of the section

104 a white oak 26 in. diam. S30E 9 L. a hickory ¹⁰⁴
 4 in diam. r 2 1/2 N 27 L. - 2nd Division Beginning
 at an elm 18 in diam. west 22 L. in the south line
 162 1/2 poles from either corner thence north marked
 a white oak 26 in. diam. S12 N 6 links. a white oak
 30 inches diam. r 70 E 6 links. at 80 1/2 poles, passing the
 center corner at 162 1/2 poles, 322 poles to a stake in a
 prairie in the north line of the Section -

3rd Division Begin at 3 elms growing from one root S18E
 12 links dist in the south line of the sec. 84 1/2 poles
 west of the elm thence north 161 poles to the 3 willows
 on the bank of the creek

(8137) 11th mo. (Nov) 18th 1829 Survey N^o 125
 Surveyed 70 1/4 acres for Thomas Macamson

Beginning 70 poles north of the S.E. corner of Sec. 31
 Town 3 Range 14 Mtd. a white oak 18 in. diam. S23L dist
 a bur oak r 45 E 34 L. - thence east 22 1/2 poles to a
 white oak 12 inches diam. N7E 39 L. - thence north 51
 poles to a stake in a cornfield
 thence r 70 N 25 poles to a stake
 in a prairie and in the east line
 of Robert Humphrey's land
 thence with said line south
 58 poles to the beginning con-
 taining a part of the S.E. q^r
 of said section



William Blair } 66
 Hugh Schooner }
 Lizzy & page }
 J. C. Marmen
 C. L. L. C.

(8138) 11th mo. 12th 1830 Survey N^o 124
 Surveyed 158 1/2 acres of land for Robert R. Dantape
 Beginning at a sugar tree and buck in the east line
 of Benjamin Boffard's Survey r 46 58 1/2 46 78 and
 north west corner to a lot of Gary's land thence r 37 N
 (leaving a branch) at 16 poles 84 1/2 pole passed 2 bushes marked