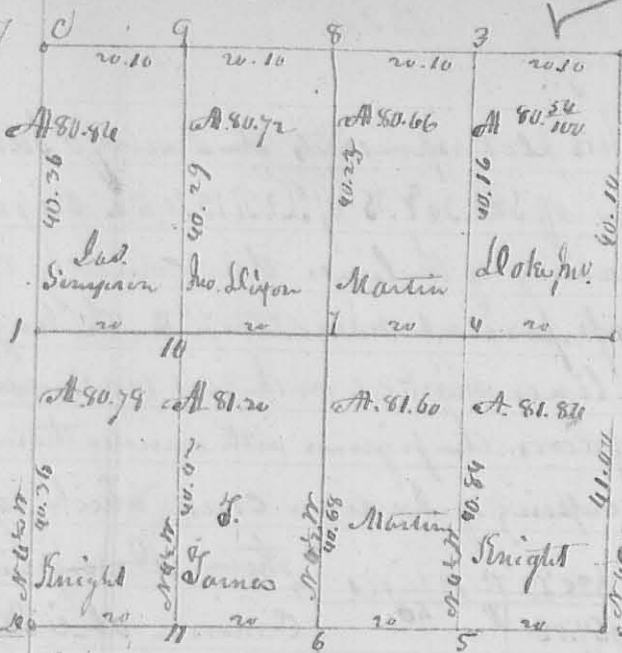


N^o 247

S
16
R 8 E

9329



13 this plat represents the survey 2032 and sub. division of 16.51 R 8 E. The course & distance as marked, running at right angles, except onto the East line. (See the notes marked on the line) the corners and as follows: A. A. lot corner, planted a stem figure B. 1/2 corner. B. lot corner. 6 1/2 chains at figure 1. Beech 18 l^{ts} S 00 E 11 links, do 6 l^{ts} N 33 W 36 links, at figure 2. Poplar 12 l^{ts} S 18 E 12 links, Hickory 22 l^{ts} S 35 E 34 links.

at figure 3 is a beech 16 l^{ts} S 55 W 7 links, do 20 l^{ts} N 35 E 31 links, at 8 Beech 18 l^{ts} N 46 W 24 links, do 12 l^{ts} S 25 E 23 links, at 9 is Beech 12 l^{ts} S 15 E 8 1/2 links, White Oak 6 l^{ts} N 33 W 22 links, at 10 is a Cherry 12 l^{ts} N 22 W 15 links, White Oak 6 l^{ts} S 18 E 12 links, at 11 Poplar 12 l^{ts} 14 links distant, Hickory 22 l^{ts} S 35 E 34 links, at 6 is the original 1/2 corner on the South line of the section, at 7 is a Gray ash 10 l^{ts} N 57 W 25 links, and haw 6 l^{ts} S 39 E 39 links, at 4 is a Sugar 15 l^{ts} S 67 E 7 links, dogwood 4 l^{ts} N 33 W 7 links, at 5 is an Ash 3 l^{ts} S 7 W 11 links, Dogwood 3 l^{ts} N 67 W 12 links.

John Simpson & Martin
Thos. James. et al.
June 1834

D. Hopkins depy. Surveyor