

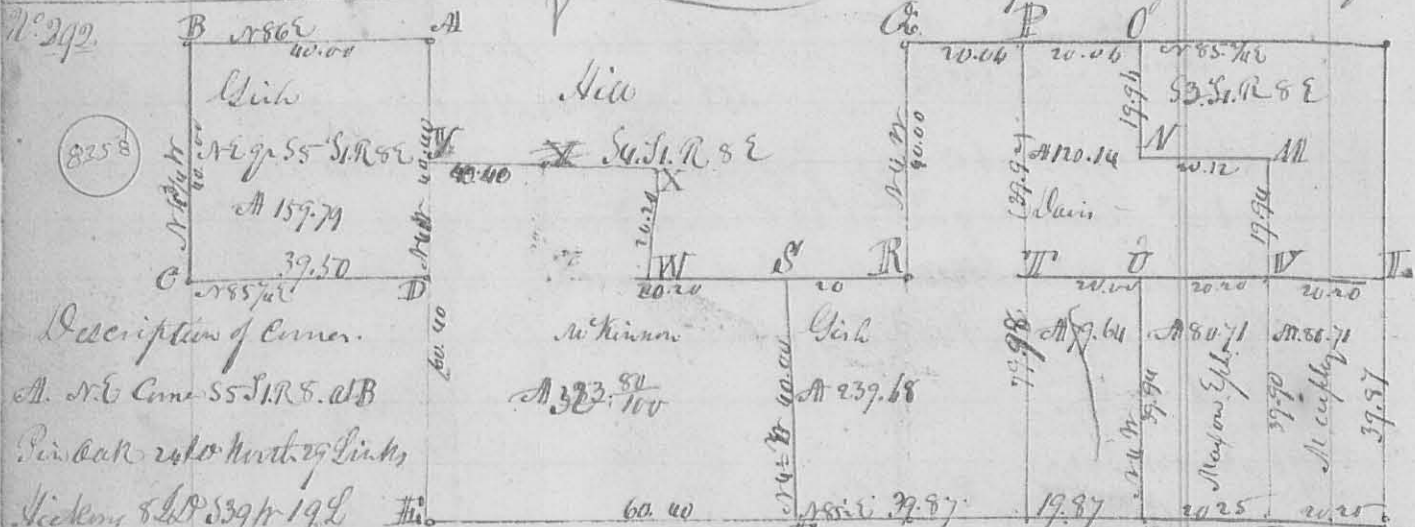
Orig. gr. Post on South line of the section M Beech 20 1/2 185 E  
 4 Links Beech 15 1/2 178 1/2 to 15 Links M Beech 6 1/2 53 1/2 5 Links from  
 wood 3 1/2 16 1/2 11 1/2 0 Elm 4 1/2 58 1/2 8 1/2 Hickory 6 1/2 16 1/2 11 1/2  
 21 1/2 Red Oak 36 1/2 124 1/2 35 Ironwood 2 1/2 5 1/2 7 Links.  
 for the length of the line & quantity of Acres see the plat  
 Surveyed Nov. 9<sup>th</sup> 1835

Amza Saunders  
 Silas Arbogast ch. carrier

Lan Hoptkin  
 Logan County Surveyor

N<sup>o</sup> 291 Surveyed Nov. 9<sup>th</sup> 1835 a line for Amza Saunders & James Weatherhead  
 dividing part S 36 S 75 R 7 E Lewis town Reserve as follows Beginning on  
 the center of the North line of said section at the original gr. corner a Beech  
 15 1/2 18 1/2 L Ironwood 3 1/2 cut down, marked new angle 4 1/2 53 1/2  
 11 Links, then S 33 3/4 E 26 ch. 30 Links crossing run Creek at 10 ch to the  
 boundary line a Spruce Beech 15 1/2 157 1/2 33 Links Buck Eye 8 1/2 58 1/2  
 16 1/2 Links

L Hoptkin Logan County Surveyor



Description of Corner.

A. N.E. Cor. S 5 S 1 R 8. 2 B  
 Pin Oak 24 1/2 North 29 Links  
 Hickory 8 1/2 53 1/2 19 L  
 C Beech 18 1/2 56 1/2 25 Hickory 12 1/2 18 1/2 25 Links D Beech 18 1/2 56 1/2 26 L Beech  
 22 1/2 112 20 Links Ironwood 18 1/2 30 Links E N<sup>o</sup> 257 page 207 H. SW Corner of S 4 F Beech  
 12 1/2 54 1/2 8 Links Sugar 18 1/2 30 Links G Hickory 18 1/2 15 1/2 28 Links Ash  
 24 1/2 53 1/2 20 L H Original gr. corner on South line of S 3. p. II Logwood 3 1/2  
 17 1/2 W 34 L & Logwood 11 1/2 54 1/2 13 Links K S.E. Corner of Sect. I. Sugar 6 1/2  
 Iron 14 Links Beech 15 1/2 174 1/2 57 Links M Beech 22 17 1/2 17 L Beech 12 1/2  
 18 1/2 W 12 L N Hickory 18 1/2 58 1/2 11 1/2 L Beech 8 1/2 16 1/2 31 1/2 L O Beech 10 1/2 52 L  
 56 1/2 27 L Sugar 5 1/2 16 1/2 20 Links P Elm 22 1/2 56 1/2 42 L Hickory 10 1/2  
 13 1/2 W 14 L Q Sect. corner R. gr. Post between S 3 4 Beech 6 1/2 18 1/2 25 L  
 Water Beech (down) 11 1/2 18 1/2 20 L R Beech 20 1/2 132 1/2 11 L Lynn 16 1/2 53 1/2 17 L  
 T Hickory 18 1/2 16 1/2 19 L Iron 12 1/2 54 1/2 25 L U Gray Ash 15 1/2 54 1/2 38 L V Iron 20 1/2  
 Iron 20 Hickory 6 1/2 54 1/2 14 L W Pin Oak 12 1/2 ch. corner Nov. 11 1835 L Hoptkin L. carrier