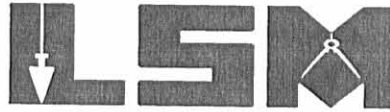


Lee Surveying and Mapping Co., Inc.

Land Surveys • Topography • Subdivisions • Construction Layout

117 N. Madriver St.
Bellefontaine OH 43311



Phone: (937) 593-7335
Fax: (937) 593-7444

GRANDSTAFF 2.000 ACRES

Lying in Section 3, Town 2, Range 14, Pleasant Township, Logan County, Ohio.

Being out of the James R. Grandstaff, Trustee original 44.0 acre tract as deeded and described in Official Record 377, Page 383, Tract III of the Logan County Records of Deeds and being more particularly described as follows:

Beginning at a railroad spike found on the west line of Section 3 at the intersection of the center-lines of Ohio Route 47 and Ohio Route 235.

THENCE, with the west line of Section 3 and the center-line of Ohio Route 235 (60 feet wide), N 4°-52'-00" E, a distance of 805.18 feet to a MAG nail set at the TRUE POINT OF BEGINNING.

THENCE, with the west line of Section 3 and the center-line of Ohio Route 235, N 4°-52'-00" E, a distance of 290.40 feet to a MAG nail set.

THENCE, N 85°-24'-16" E, a distance of 304.14 feet to a 5/8 inch iron rod set, passing a 5/8 inch iron rod set at 30.85 feet.

THENCE, S 4°-52'-00" W, a distance of 290.40 feet to a 5/8 inch iron rod set.

THENCE, S 85°-24'-16" W, a distance of 304.14 feet to the point of beginning, passing a 5/8 inch iron rod set at 273.29 feet.

Containing 2.000 acres, of which 0.200 acre is within the highway right-of-way.

The basis for bearings is the west line of Section 3, being N 4°-52'-00" E, and all other bearings are from angles and distances measured in a field survey by Lee Surveying and Mapping Co., Inc. on January 9, 2002.

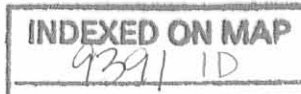
Description prepared by:

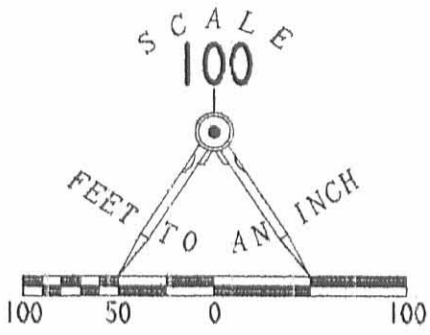


ORIGINAL STAMP IN GREEN


Jeffrey I. Lee
Professional Surveyor 6359
January 11, 2001

L-3299





LEGEND

- 5/8" IRON ROD SET
- ⊙ MAG NAIL SET
- 5/8" IRON ROD FOUND
- ⊗ RAILROAD SPIKE FOUND

(60' WIDE R/W)

2.000 ACRES
OF WHICH 0.200 ACRE IS WITHIN
HIGHWAY RIGHT-OF-WAY

JAMES R. GRANDSTAFF, TRUSTEE
ORIGINAL 44.0 ACRE TRACT
OFFICIAL RECORD 377, PAGE 383, TRACT III

SURVEY OF 2.000 ACRES OUT OF THE
JAMES R. GRANDSTAFF, TRUSTEE
ORIGINAL 44.0 ACRE TRACT
OFFICIAL RECORD 377, PAGE 383, TRACT III
SECTION 3, TOWN 2, RANGE 14
PLEASANT TOWNSHIP
LOGAN COUNTY, OHIO



SURVEYED BY:

Jeffrey I. Lee

JEFFREY I. LEE
PROFESSIONAL SURVEYOR 6359
JANUARY 9, 2002

COPYRIGHT 2002 BY:
LEE SURVEYING & MAPPING CO., INC.
117 North Madriver Street
BELLEFONTAINE, OHIO 43311
(937) 593-7335

ORIGINAL STAMP IN GREEN

D407

GRNDSTAF
GRNDSTAF.DAT

L-3299-3

2 WORKING DAYS
BEFORE YOU DIG
CALL TOLL FREE **800-362-2764**
OHIO UTILITIES PROTECTION SERVICE.

INDEXED ON MAP
9391 1P

9-513

Lee Surveying and Mapping Co., Inc.



Land Surveys • Topography • Subdivisions • Construction Layout

117 N. Madriver St.
Bellefontaine OH 43311



Phone: (937) 593-7335
Fax: (937) 593-7444
surveys@lsminc.us

GRANDSTAFF, TRUSTEE 9.846 ACRES

Lying in Section 3, Town 2, Range 14, Pleasant Township, Logan County, Ohio

Being out of the James R. Grandstaff, Trustee 80 acre tract and original 44.0 acre tract as deeded and described in Official Record 377, Page 383 Tract III, Parcels 1 and 3 of the Logan County Records of Deeds and being more particularly described as follows:

Commencing at a 5/8 inch iron rod found at the northeast corner of Section 3 on the center-line of Ohio Route 235 (60 feet wide).

THENCE, with the center-line of Ohio Route 235 and the west line of Section 3, S 04°-52'-00"W, a distance of 437.51 feet to a MAG nail set at the TRUE POINT OF BEGINNING.

THENCE, S 82°-29'-59"E, a distance of 1389.96 feet to a 5/8 inch iron rod set, passing a 5/8 inch iron rod set at 30.03 feet.

THENCE, S 56°-25'-46"E, a distance of 226.60 feet to a 5/8 inch iron rod set.

THENCE, S 14°-12'-01"E, a distance of 37.00 feet to a 5/8 inch iron rod set.

THENCE, S 77°-23'-54"W, a distance of 511.63 feet to a 5/8 inch iron rod set.

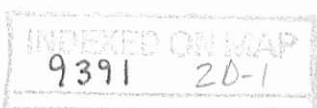
THENCE, N 52°-00'-32"W, a distance of 122.21 feet to a 5/8 inch iron rod set.

THENCE, S 81°-37'-39"W, a distance of 728.30 feet to a 5/8 inch iron rod found.

THENCE, with the lines of the Shawn Eric Holycross 2.000 acre tract (O.R. 555, Pg. 957), the following two courses:

N 04°-52'-00"E, a distance of 290.40 feet to a 5/8 inch iron rod found.

S 85°-24'-16"W, a distance of 304.14 feet to a MAG nail found, passing a 5/8 inch iron rod found at 273.73 feet.



Lee Surveying and Mapping Co., Inc.

Land Surveys • Topography • Subdivisions • Construction Layout

117 N. Madriver St.
Bellefontaine OH 43311



Phone: (937) 593-7335
Fax: (937) 593-7444
surveys@lsminc.us

THENCE, with the center-line of Ohio Route 235 and the west line of Section 3, N 04°-52'-00"E, a distance of 220.86 feet to the point of beginning.

Containing 9.846 acres, of which 0.150 acre is within the highway right-of-way.

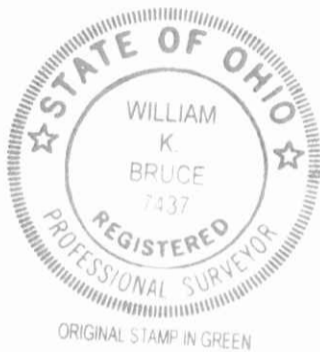
Property is subject to any and all previous easements and rights-of-way of record.

The basis for bearings is the center-line of Ohio Route 235, being N 04°-52'-00"E, and all other bearings are from angles and distances measured in a field survey by Lee Surveying and Mapping Co., Inc. on August 27, 2013.

Description prepared by:

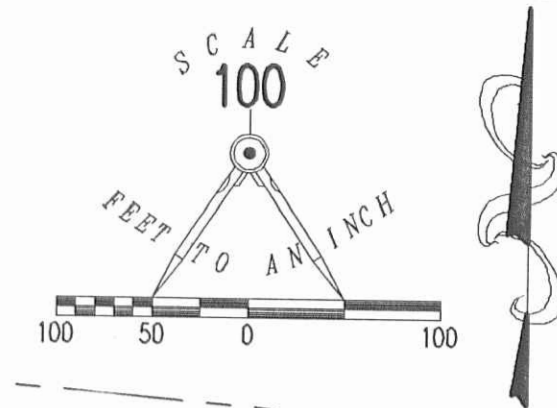
A handwritten signature in black ink that reads "William K. Bruce". The signature is written in a cursive style with a long, sweeping underline.

William K. Bruce
Professional Surveyor 7437
August 30, 2013



L-32990713



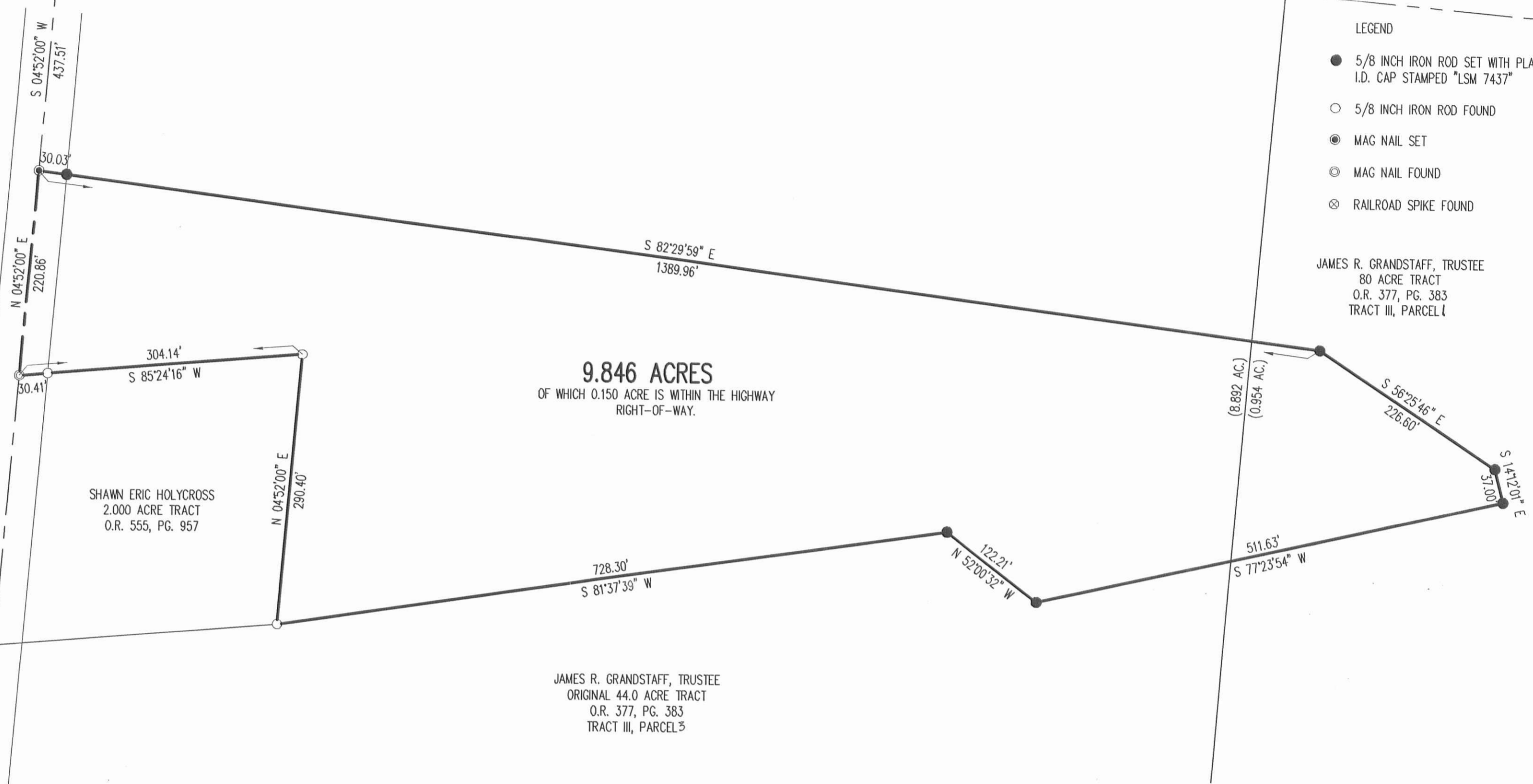


- LEGEND
- 5/8 INCH IRON ROD SET WITH PLASTIC I.D. CAP STAMPED "LSM 7437"
 - 5/8 INCH IRON ROD FOUND
 - ⊙ MAG NAIL SET
 - ⊗ MAG NAIL FOUND
 - ⊗ RAILROAD SPIKE FOUND

JAMES R. GRANDSTAFF, TRUSTEE
 80 ACRE TRACT
 O.R. 377, PG. 383
 TRACT III, PARCEL I

SECTION 10
SECTION 9

SECTION 4
SECTION 3



SURVEY OF A 9.846 ACRE TRACT OUT OF THE
 JAMES R. GRANDSTAFF, TRUSTEE
 80 ACRE TRACT AND ORIGINAL 44.0 ACRE TRACT
 OFFICIAL RECORD 377, PAGE 383
 TRACT III, PARCELS 1 AND 3
 SECTION 3, TOWN 2, RANGE 14
 PLEASANT TOWNSHIP
 LOGAN COUNTY, OHIO

SURVEYED BY:
William K. Bruce
 WILLIAM K. BRUCE
 PROFESSIONAL SURVEYOR 7437
 AUGUST 27, 2013



COPYRIGHT 2013 BY:
 LEE SURVEYING & MAPPING CO., INC.
 117 North Modriver Street
 BELLEFONTAINE, OHIO 43311
 (937) 593-7335
 WWW.LSMINC.US
 surveys@lsminc.us
 ADW D0713 32990713 L-3299-3

235
(60')

47

2 WORKING DAYS
BEFORE YOU DIG
 CALL TOLL FREE 800-362-2764
 OHIO UTILITIES PROTECTION SERVICE

INDEXED ON MAP
 9391 2P