

Plat, Extension Quincy Corporation

Feb. 1879

By S. A. Buchanan

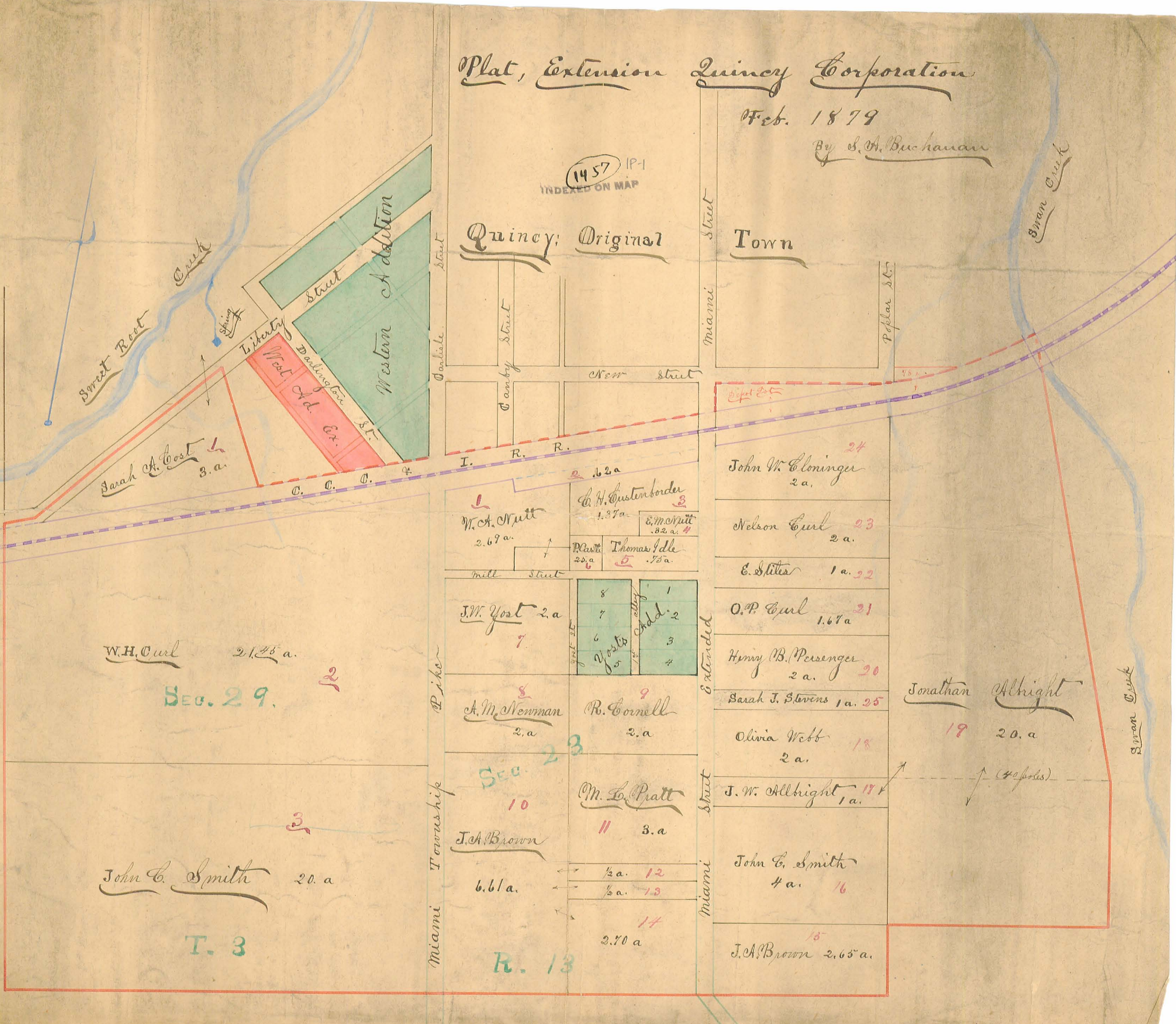
1457 IP-1
INDEXED ON MAP

Quincy; Original

Town

Swan Creek

Swan Creek



Sweet Root Creek
Spring
Sarah A. Cost 3 a.

Liberty St.
Darling St.
Western Addition
C.C.C.

Parble St.
Canby St.
New Street
I. R. R.

Miami Street
Poplar St.

W.H. Curl 21.45 a.

SEC. 29.

John C. Smith 20 a

T. 3

W.A. Nutt 2.69 a.

C.H. Gustenboder 1.37 a.
E.M. Nutt .82 a.
Thomas Idle .75 a.

J.W. Yost 2 a

8
7
6
5
Yosts
1
Add. 2
3
4

A.M. Newman 2 a

R. Cornell 2 a

J.A. Brown 6.61 a.

M. L. Pratt 3 a

1/2 a. 12
1/2 a. 13

14
2.70 a

John W. Curlinger 2 a. 24

Nelson Curl 2 a. 23

E. Stiles 1 a. 22

O.P. Curl 1.67 a. 21

Henry B. Persenger 2 a. 20

Sarah J. Stevens 1 a. 25

Olivia Webb 2 a. 18

J.W. Albright 1 a. 17

John C. Smith 4 a. 16

J.A. Brown 2.65 a. 15

Jonathan Albright 19 20 a

(40 poles)

R. 13

Plat

Extension Lumber Corporation

Feb 1879

Recorded in Plat Book "A"

Page 91 By John A. Carter

Recorder

Aug 21 1879

INDEXED ON MAP
1879
17-2

3-28-14

APPROVED **Lee Surveying and Mapping Co., Inc.**

Land Surveys • Topography • Subdivisions • Construction Layout

117 N. Madriver St.
Bellefontaine OH 43311



Phone: (937) 593-7335
Fax: (937) 593-7444
surveys@lsminc.us

CALLAND FARMS, LTD 8.572 ACRES

Lying in Section 29, Town 3, Range 13, Village of Quincy, Miami Township, Logan County, Ohio.

Being out of the Calland Farms LTD, 55 acre tract as deeded and described in Official Record 788, Page 745 of the Logan County Records of Deeds and being more particularly described as follows:

Commencing at MAG nail set at the southeast corner of Section 29 at the intersection of center-lines of Ohio Route 706 (60 feet wide) and Ohio Route 235 (60 feet wide).

THENCE, with the center-line of Ohio Route 235 and the east line of Section 29, N 04°-28'-10"E a distance of 1516.86 feet to a MAG nail set at the TRUE POINT OF BEGINNING.

THENCE, N 85°-52'-52"W, a distance of 1333.53 feet to a 5/8 inch iron rod set, passing a 5/8 inch iron rod set at 30.00 feet.

THENCE, with the east line of the Tim W. Davidson, Trustee 38 acre tract (O.R. 410, Pg. 3, Parcel V, Tract IV), N 04°-27'-09"E, a distance of 280.00 feet to a 5/8 inch iron rod set.

THENCE, south line of the Tim W. Davidson, Trustee 25 acre tract (O.R. 410, Pg. 3, Parcel V, Tract V), S 85°-52'-52"E, a distance of 1333.61 feet to a MAG nail set, passing a 5/8 inch iron rod set at 1303.61 feet.

THENCE, with the center-line of Ohio Route 235 and the east line of Section 29, S 04°-28'-10"W, a distance of 280.00 feet to the point of beginning.

Containing 8.572 acres of which 0.193 acre is within the highway right-of-way.

Property is subject to any and all previous easements and rights-of-way of record.

The basis for bearings is the center-line of Ohio Route 235, being N 04°-28'-10"E, and all other bearings are from angles and distances measured in a field survey by Lee Surveying and Mapping Co., Inc. on March 21, 2014.



Description prepared by:

William K. Bruce

William K. Bruce
Professional Surveyor 7437
March 21, 2014

L-5691



APPROVED

3-28-14

TIM W. DAVIDSON, TRUSTEE
38 ACRE
O.R. 410, PG. 3
PARCEL V, TRACT IV

TIM W. DAVIDSON, TRUSTEE
25 ACRE
O.R. 410, PG. 3
PARCEL V, TRACT V

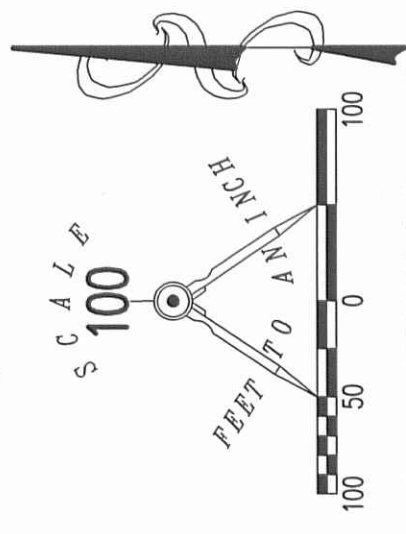
S 85°52'52" E
1333.61'

8.572 ACRES
0.193 ACRE IS WITHIN THE HIGHWAY
RIGHT-OF-WAY.

1333.53'
N 85°52'52" W

CALLAND FARMS LTD.
55 ACRE TRACT
O.R. 788, PG. 745

- LEGEND
- 5/8 INCH IRON ROD SET WITH PLASTIC I.D. CAP STAMPED "LSM 7437"
 - ⊙ MAG NAIL SET



2 WORKING DAYS
BEFORE YOU DIG
CALL TOLL FREE **800-362-2764**
OHIO UTILITIES PROTECTION SERVICE.

**A SURVEY OF 8.572 ACRES
OUT OF THE
CALLAND FARMS LTD.
55 ACRE TRACT
OFFICIAL RECORD 788, PAGE 745
VILLAGE OF QUINCY
SECTION 29, TOWN 3, RANGE 13
MIAMI TOWNSHIP
LOGAN COUNTY, OHIO**



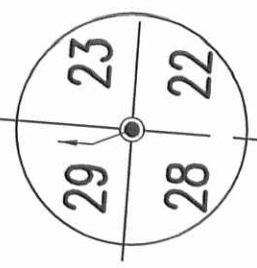
SURVEYED BY:

William K. Bruce
WILLIAM K. BRUCE
PROFESSIONAL SURVEYOR 7437
MARCH 21, 2014

INDEXED ON MAP
1457 ZP

COPYRIGHT 2014 BY:
LEE SURVEYING & MAPPING CO., INC.
117 North Madriver Street
BELLEFONTAINE, OHIO 43311
(937) 593-7335
WWW.LSMINC.US
surveys@lsminc.us
ADW D0214 56910214 L-5691-3

OHIO ROUTE 706 (60 FEET WIDE)



OHIO ROUTE 235 (60 FEET WIDE)

30.00'
280.00' S 04°28'10" W
1516.86' N 04°28'10" E
30.00'