



# Lee Surveying and Mapping Co.



Farm Surveys • Lot Surveys • Topography • Subdivisions • Construction Layout

143 EAST COLUMBUS AVENUE  
BELLEFONTAINE, OHIO 43311

(513) 593-7335

JEFFREY I. LEE, P.S.

UNITED TELEPHONE COMPANY OF OHIO  
(0.010 ACRE)

Lying in Section 23, Town 3, Range 13, in the Village of Quincy, Miami Township, Logan County, Ohio.

Being all that tract lying in the name of Guy W. Thacker as deeded and described in Volume 352, Page 733 of the Logan County Records of Deeds and being more particularly described as follows:

Beginning at a square head bolt found at the intersection at the east margin of Miami Street (44.5 feet wide) and the south margin of New Street (60 feet wide).

THENCE, with said south margin of New Street, S 89°-55'-00" E (assumed bearing), a distance of 23.19 feet to a 3/4 inch iron pipe found at a corner to the Bellefontaine and Indiana Railroad Company, (Conrail) original 0.57 acre depot lot (Deed Vol. X, Page 114).

THENCE, with said Conrail property the following two courses:

- 1.) S 0°-08'-33" W, a distance of 18.00 feet to a 3/4 inch iron pipe found.
- 2.) S 89°-54'-56" W, a distance of 23.89 feet to a square head bolt found at the east margin of Miami Street.

THENCE, with said east margin of Miami Street N 0°-04'-43" E, a distance of 18.07 feet to the place of beginning.

Containing 431 square feet or 0.010 acre.

The basis for bearings is based upon the center-line of New Street, being S 89°-55'-00" W, and all other bearings are from angles and distances obtained from a field survey by Lee Surveying and Mapping Company on June 11, 1992.

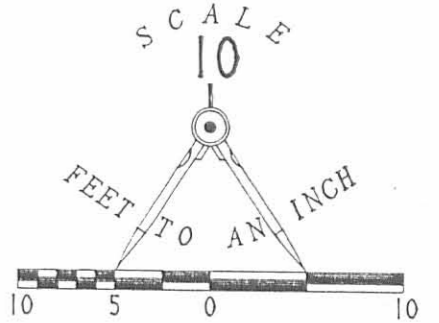
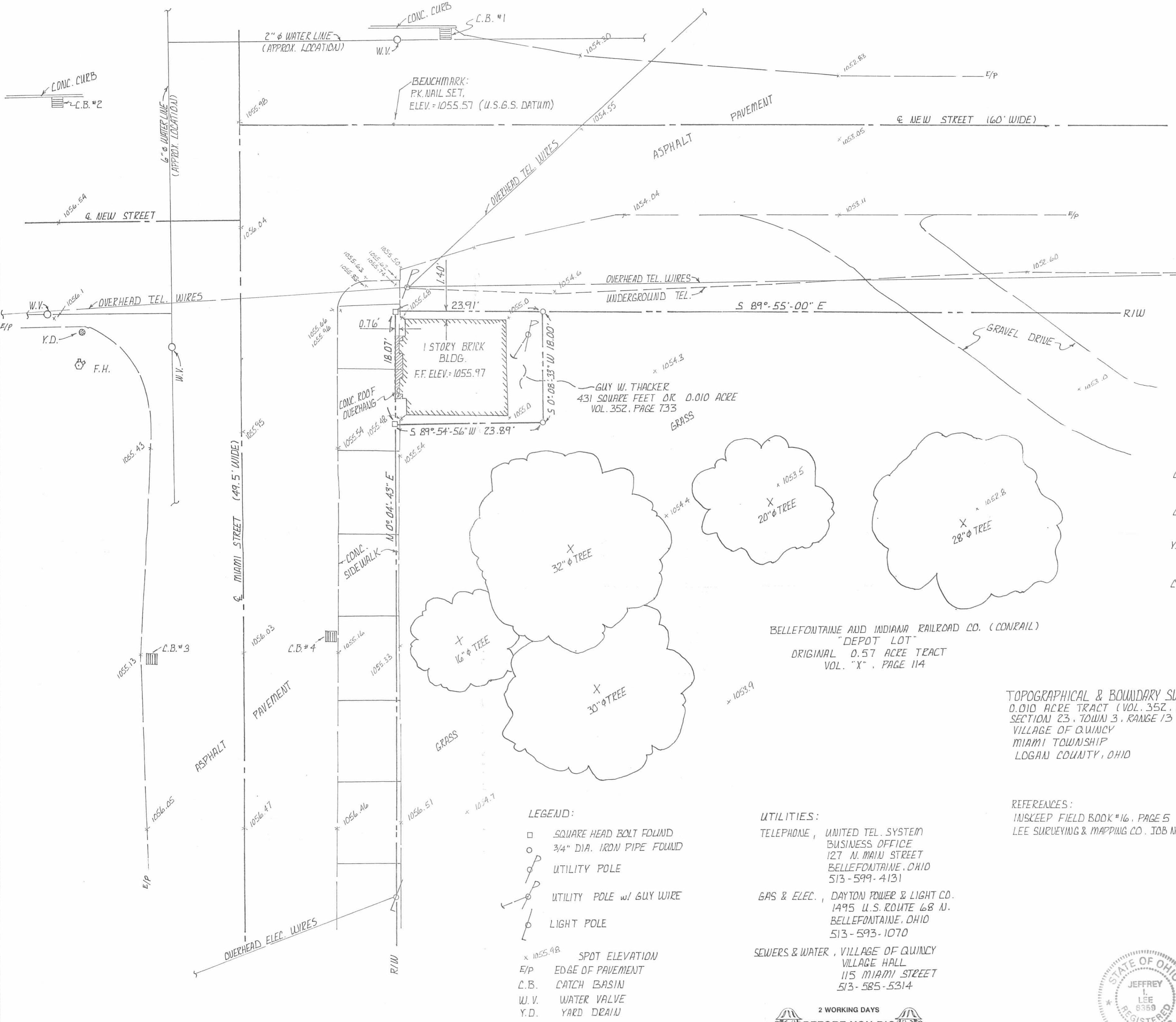
Description prepared by:



*Jeffrey I. Lee*  
Jeffrey I. Lee  
Professional Surveyor 6359  
July 13, 1992

ORIGINAL STAMP IN GREEN

INDEXED ON MAP  
2354 1D



CATCH BASIN SCHEDULE:

C.B. #1	TOP/CASTING 1054.69	8" CLAY (South) out	INV. = 1052.49
C.B. #2	TOP/CASTING 1055.60	8" CLAY (WEST) in	INV. = 1052.90
		8" CLAY (EAST) out	INV. = 1052.90
Y.D.	TOP/CASTING 1055.34	10" CLAY	INV. = 1051.94
		(DIRECTION UNDETERMINED)	
C.B. #3 & #4	#3 TOP/CASTING = 1055.24	#4 TOP/CASTING = 1055.28	

(INVERTS & PIPE SIZES/DIRECTIONS UNDETERMINED DUE TO EXCESSIVE DEBRIS BUILDUP IN CATCH BASINS)

INDEXED ON MAP  
2354 1P

2 WORKING DAYS  
BEFORE YOU DIG  
CALL TOLL FREE 800-362-2764  
OHIO UTILITIES PROTECTION SERVICE



SURVEYED BY  
  
 JEFFREY I. LEE  
 PROFESSIONAL SURVEYOR 6359  
 JUNE 11, 1992

LEE SURVEYING & MAPPING CO.  
 143 East Columbus Avenue  
 BELLEFONTAINE, OHIO 43311  
 (513) 593-7335

INDEXED ON MAP  
2354 1P



