

# Lee Surveying and Mapping Co.



Farm Surveys • Lot Surveys • Topography • Subdivisions • Construction Layout

855 EAST SANDUSKY AVENUE  
BELLEFONTAINE, OHIO 43311

(513) 593-5780

CLAYTON M. LEE, P.S.  
JEFFREY I. LEE, P.S.

## SPANGLER (1.397 ACRES)

Lying in the northeast quarter of Section 29, T-3, R-13, Miami Township, Logan County, Ohio.

Being all of the remaining (north part) of that 6 acres (deed), 5.991 acres (actual) as deeded and described in Volume 336, Page 907 of the Logan County Records of Deeds and being more particularly described as follows:

Beginning at a 5/8" iron rod found marking the northeast corner of the said 5.991 acre tract and being on the south line of the C.C.C. & St. L. Railroad.

THENCE, with the east line of said 5.991 acres, the same being the west line of the Davidson land (Volume 386, Page 630, Tract II), S 4°-05'-18" W, a distance of 281.85 feet to a 5/8" iron rod found marking the northeast corner of Davidson's 4.549 acre tract (Volume O.R. 27, Page 436).

THENCE, with the north line of said 4.594 acre tract, N 85°-54'-40" W, a distance of 231.77 feet to a 5/8" iron rod found at the northwest corner of said 4.594 acres.

THENCE, with the Spangler west line, N 4°-05'-18" E, a distance of 243.25 feet to a 5/8" iron rod found on the south line of the railroad marking the northwest corner of the Spangler land.

THENCE, with the said south line of the railroad, N 84°-38' E, a distance of 234.96 feet to the point of beginning.

Containing 1.397 acres.

This description prepared from an actual field survey.

Basis for bearings: South line of the C.C.C. & St. L. Railroad (N 84°-38' E).

Prepared by:

*Clayton M. Lee*  
Clayton M. Lee  
Registered Professional Surveyor No. 6181  
August 1987



ORIGINAL STAMP IN GREEN

INDEXED ON MAP  
5013 1D-1

Received 8-12-86

OK 8-13-86 C.R.

# Lee Surveying and Mapping Co.



Farm Surveys • Lot Surveys • Topography • Subdivisions • Construction Layout

855 EAST SANDUSKY AVENUE  
BELLEFONTAINE, OHIO 43311

(513) 593-5780

CLAYTON M. LEE, P.S.  
JEFFREY I. LEE, P.S.

## SPANGLER TO DAVIDSON

Lying in the northeast quarter of Section 29, T-3, R-13, Miami Township, Logan County, Ohio.

Being off the south end of that 6.00 acres (5 acres plus 1 acre) in the name of Spangler as deeded and described in Volume 336, Page 907 of the Logan County Records of Deeds and being more particularly described as follows:

Beginning at a 5/8" iron rod set on the west line of said 6.00 acre tract, a distance of 243.25 feet, southerly, along said west line from the northwest corner of said 6.00 acres. This beginning point also being the northeast corner of the grantee's 3.966 acres (Volume 396, Page 336).

THENCE, with the north line of said 3.966 acre tract, extended easterly, S 85°-54'-40" E, a distance of 231.77 feet to a 5/8" iron rod set on the grantor's east line.

THENCE, with said east line, S 4°-05'-18" W, a distance of 862.65 feet to a 5/8" iron rod set on grantor's southeast corner.

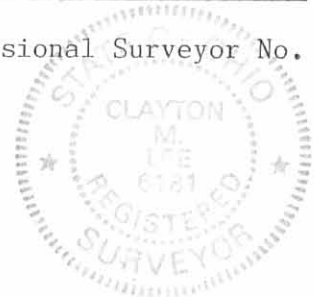
THENCE, with the grantor's south line, the same being the grantee's north line (Volume 386, Page 630), N 86°-20'-36" W, a distance of 231.77 feet to a 5/8" iron rod set on the grantor's southwest corner, the same being the southeast corner of grantee's 3.966 acre tract (Volume 396, Page 336).

THENCE, with the east line of said 3.966 acre tract, N 4°-05'-18" E, a distance of 864.40 feet to the point of beginning.

Containing 4.594 acres, of which 3.808 acres are out of grantor's Tract 1, (5.00 acres) and 0.786 acre is out of grantor's Tract 2, (1.00 acre).

Prepared by:

Clayton M. Lee  
Registered Professional Surveyor No. 6181  
August 11, 1986



This description prepared from an actual field survey.

INDEXED ON MAP  
5013 1D-2

ORIGINAL STAMP IN GREEN

L-922

CO. RD. 70

CCC & ST. L. RR

234.96'

SET 5/8" IRON ROD

A. J. JESSEE  
1.039 AC.  
VOL. 331, PG. 12

FRANK SPANGLER  
VOL. 336, PG. 907  
1.397 ACRES  
REMAINING  
(BY SURVEY)

243.25'

(0.224 AC.)  
(1.175 AC.)

281.85'  
VOL. 386, PG. 630

FOUND 5/8" IRON ROD

S 85° 54' - 40" E  
231.77'

SET 5/8" IRON ROD

SCALE ~ 1" = 100'

LOUIS A. DAVIDSON, 3.966 ACRES  
VOL. 336, PG. 336

BASIS FOR BEARINGS  
N 4°-05'-18" E

BEGINNING POINT

864.40

(0.786 AC.)  
(3.808 AC.)  
W. LINE OF ORIG. 5.00 AC. (TR. 1) 336/907

4.594 ACRES  
SPANGLER TO DAVIDSON

S 4°-05'-18" W

(0.75 AC.) AUD. DUPLICATE 862.65'

LOUIS DAVIDSON TR. II

WEST CORP. LINE OF QUINCY  
(18.64 AC.)

SURVEY OF 4.594 ACRES  
OUT OF THE SPANGLER  
6 AC. TRACT (S+1)  
VOL. 336, PG. 907  
NE 1/4 OF SEC. 29, T-3, R-13  
MIAMI TOWNSHIP  
LOGAN COUNTY, OHIO

By:

JEFFREY I. LEE  
REG. PROF. SURVEYOR  
6359

AUG. 1986



ORIGINAL STAMP IN GREEN

FOUND 5/8" IRON ROD  
199.66'

N 86°-20'-36" W  
231.77'

LOUIS DAVIDSON  
VOL. 386, PG. 630

THIS POINT NOT SET,  
AS PER REQUEST BY PURCHASER  
(TEMPORARY NAIL ONLY)

INDEXED ON MAP  
5013 IP

# Lee Surveying and Mapping Co.



Farm Surveys • Lot Surveys • Topography • Subdivisions • Construction Layout

855 EAST SANDUSKY AVENUE  
BELLEFONTAINE, OHIO 43311

(513) 593-5780

CLAYTON M. LEE, P.S.  
JEFFREY I. LEE, P.S.

## JESSEE TO DAVIDSON

Lying in Section 29, T-3, R-13, Miami Township, Logan County, Ohio.

Being the major part of that 5.00 acres as deeded and described in Volume 331, Page 12 of the Logan County Records of Deeds and more particularly described as follows:

Beginning at an iron rod set at the southeast corner of grantor's said 5 acre tract, the same being the southwest corner of a 6 acre tract (Volume 336, Page 907) and being on a north line of the L.A. Davidson lands (Volume 386, Page 630).

THENCE, with the said Davidson north line, N 86°-20'-36" W, a distance of 199.66 feet to the southwest corner of said 5.00 acres and also being a corner in the said Davidson lands.

THENCE, with the west line of said 5.00 acres, the same being an east line of said Davidson lands, N 4°-05'-18" E, a distance of 865.90 feet to a post at the southeast corner of a 1.12 acre tract. (Volume 340, Page 324). This point lying southerly along said west line a distance of 210.00 feet from the northwest corner of said 5.00 acre tract (South line of C.C.C. and St. L. R.R.).

THENCE, with the south line of the said 1.12 acres extended easterly, S 85°-54'-40" E, a distance of 199.65 feet to an iron rod set on the east line of said 5.00 acres.

THENCE, with said east line, S 4°-05'-18" W, a distance of 864.40 feet to the point of beginning. Containing 3.966 acres.

Last previous deed reference: Volume 331, Page 12.

Prepared by:

*Clayton M. Lee*

Clayton M. Lee  
Reg. Surveyor No. 6181  
June 4, 1982



Co. Rd. 70

CCC & ST. L. RR

R/W 2

NORTH



N 84°-38'E

234.96

SET IRON ROD

202.40'

1346.8' TO 1/4<sup>TH</sup> SEC. LINE  
263.6'

FOUND IRON ROD

C. DAVIS  
1.12 AC.  
VOL. 340, PG. 324

A. J. JESSEE  
5 AC. (DEED)  
VOL. 331, PG. 12  
1.039 AC. REMAIN

210.00'

243.25'

WOOD POST

S 85°-54'-40"E

SET IRON ROD

199.65'

F. SPANGLER  
6.0 AC.  
VOL. 336, PG. 207

WEST CORP. LINE  
VILLAGE OF QUINCY

L. A. DAVIDSON  
55.09 AC. (54, 34-DEED)  
VOL. 386, PG. 630

N 4°-05'-18"E

865.90'

JESSE TO DAVIDSON  
3.966 ACRES

S 4°-05'-18"W

864.40'

SCALE ~ 1" = 100'

5013 2P

INDEXED ON MAP

SURVEY OF 3.966 ACRES  
OUT OF THE JESSEE 5 AC.  
SEC. 29, T-3, R-13  
MIAMI TOWNSHIP  
LOGAN COUNTY, OHIO

By: *Jeffrey I. Lee*

JEFFREY I. LEE  
REG. SURVEYOR 6359  
6-7-82

SET TACHED HUB

N 86°-20'-36"W

199.66

L. A. DAVIDSON



Lee Surveying & Mapping Co.  
855 E. Sandusky Ave.  
BELLEFONTAINE, OHIO 43311  
(513) 593-5780

L-922-5

DAVIDSON SURVEY

March 17, 1972

The following described real estate situated in Section 29, Town 3, Range 13, Miami Township, Logan County, Ohio and being more particularly described as follows:

Beginning at a corner post at the southwest corner of Audrey Jesse's 4.79 acre tract and in the north line of Louis A. Davidson's 27.28 acre tract thence with said north line N. 86°20.6'W. 237.4 feet to the northwest corner of said 27.28 acre tract; thence with the west line of said 27.28 acre tract S.3°57.9'W. 692.4 feet to the northeast corner of Louis A. Davidson's 83.47 acre tract; thence with said Davidson's north line N.87°06.2'W. 1342.3 feet to a point in the east line of Elwood Bright's 79.00 acre tract; thence with said Bright's east line N.3°41.5'E. 722.1 feet to a concrete corner post in the east line of the west  $\frac{1}{2}$  of the northwest  $\frac{1}{4}$  of Section 29; thence with said east line N.3°41.5'E. 811.4 feet to an iron bar in the south line of the C.C.C. & St. L. Railroad; thence with said south line N.84°38'E. 1346.8 feet to an iron bar at the northwest corner of a 1.12 acre tract; thence with the west line of said 1.12 acre tract S.4°05.3'W. 166.7 feet to an iron bar at the southwest corner of said tract; thence with the south line of said 1.12 acre tract S.85°54.7'E. 260.0 feet to an iron bar in the west line of Audrey Jesse's 4.79 acre tract; thence with said Jesse's west line S.4°05.3'W. 865.9 feet to the place of beginning.

Containing 55.09 acres more or less.

INDEXED ON MAP

5013 3D  
~~5014~~

C.C.C. & St. L. R.R.

SOUTH R/W

N. 84° 38' E. 1346.8'

54° 05.3' W. 166.7'  
1.12 AC.  
260.0'  
S. 85° 54.7' E.

MELVIN PFISTER ET AL  
4.39 AC.

1533.5'

55.09 AC.

54° 05.3' W. 865.9'

AUDREY JESSE  
4.79 AC.

234.3'

N. 3° 41.5' E.

N. 86° 20.6' W.  
237.4'

ELWOOD E. BRIGHT ET AL  
79.00 AC.

722.1'

N. 87° 06.2' W. 1342.3'

S. 3° 57.9' W. 692.4'

LOUIS A. DAVIDSON  
27.28 AC.

LOUIS A. DAVIDSON  
83.47 AC.

STA 81+76.75 SR. 706

INDEXED ON MAP  
5013

DAVIDSON SURVEY  
MARCH 17, 1972  
SEC. 29 T. 3 R. 13  
MIAMI TOWNSHIP  
LOGAN COUNTY, OHIO  
SCALE 1" = 200'

LESLIE H. GEESLIN  
REG. SURVEYOR 5248

DAVIDSON SURVEY

March 17, 1972

The following described real estate situated in Section 29, Town 3, Range 13, Miami 31 Logan County, Ohio and being more particularly described as follows:

Beginning at an iron bar in the south line of the C.C.C. & St. L. Railroad at the northwest corner of Audrey Jesse's 4.79 acre tract; thence with said Jesse's west line  $S.4^{\circ}05.3'W.$  210.0 feet to an iron bar; thence  $N.85^{\circ}54.7'W.$  260.0 feet to an iron bar; thence  $N.4^{\circ}05.3'E.$  166.7 feet to an iron bar in the south line of the C.C.C. & St. L.R.R.; thence with said south line  $N.84^{\circ}38'E.$  263.6 feet to the place of beginning.

Containing 1.12 acres more or less.

The above described 1.12 acres being in the northeast corner of Louis A. Davidson's 51.46 acre tract.

INDEXED ON MAP

501340



C.C.C. & ST. L. R.R.

N. 84° 38' E. 263.6'

N. 4° 05.3' E. 166.7'

1.12 AC.



S. 4° 05.3' W. 210.0'

AUDREY JESSE  
4.79 AC.

N 85° 54.7' W 260.0'

O = 5/8" IRON BAR  
SCALE 1" = 40'

DAVIDSON SURVEY  
MARCH 17, 1972  
S. 29 T. 3 R. 13  
MIAMI TOWNSHIP  
LOGAN COUNTY, OHIO

INDEXED ON MAP

5013  
4P

LESLIE H. GIBSLIN  
REG. SURVEYOR 5248

19.8  
66  
1188  
1188  
13068

Davidson  
Quincy

2.8  
66  
168  
168  
1848  
1007  
12998  
1848  
1860936

11.765  
66  
70590  
10590  
776.490

621.7  
55  
12  
776.49

776.49  
5.43  
781.92

621.7  
1007  
43519  
6217  
6260519

19.8  
66  
1188  
1188  
1306.8

1307  $\overline{) 9.200}$   
9 149  
5100

776  
1007  
5432

19.82  
66  
5652  
5652  
621.72

INDEXED ON MAP  
5013

86.1  
88.8  
1.3

16.0  
6.8  
9.2

Dobson  
Geoline

4 hrs.

7-21-62  
70° 39'

Lower Post

762 meas  
776.5 beed

1216.0 meas  
Deed 1306.8

SR 706

90°13'  
180°26.5'

89°47'

621.7 Deed  
816.2 meas

681.9 meas

Deed  
184.8

1/4 Sec Line

Hubbard  
State  
Tomb

Witness of  
Fence  
used

Deed  
184.8

90°15'

6-28-2021



**DESCRIPTION OF A  
94.804 ACRE TRACT  
IN THE VILLAGE OF QUINCY  
SOUTH OF LIBERTY STREET (C.R. 70),  
WEST OF CARLISLE STREET (S.R. 235)**

Situated in Section 29, Town 3, Range 13, Between the Miami Rivers Survey, Miami Township, Village of Quincy, Logan County, Ohio and being all of the two 20.00 acre tracts, part of the 16.00 acre tract and 38.00 acre tract and all of the 25.00 acre tract conveyed to Lee W. Davidson and Lynn A. Davidson by deed in Official Record Volume 1293, Page 33-38, Parcel V, Tract I-V (all records herein are from the Recorder's Office, Logan County, Ohio) and being more particularly described as follows:

Commence at a magnetic nail found at the southeast corner of said Section 29 at the intersection of Carlisle Street (S.R. 235, 60 feet wide) and S.R. 706 (60 feet wide);

Thence North 05° 28' 45" East a distance of 1796.79 feet along the centerline of Carlisle Street and the east line of Section 29 to a point referenced by magnetic nail found North 84° 54' 26" West 1.39 feet from the northeast corner of an 8.572 acre tract deeded to Davidson Dairy LLC by deed in Official Record Volume 1158, Page 86, and a southeasterly corner of the 25.00 acre tract, and the **TRUE POINT OF BEGINNING** of the parcel herein described.

Thence North 84° 54' 26" West a distance of 1334.90 feet leaving the section line and the centerline, along a line common to the 25.00 acre and 8.572 acre tracts to a 5/8 inch rebar found with a cap stamped "LEE 7437" at the northwest corner of said 8.572 acre tract, the southwesterly corner of the 25.00 acre tract and on the east line of 38.00 acre tract, passing a 5/8 inch rebar found with a cap stamped "LEE 7437" at 31.40 feet.

Thence South 05° 23' 58" West a distance of 1026.11 feet along a line common to said 8.752 acre tract, 38.00 acre tract, 16.00 acre tract, and a 55 acre tract conveyed to Calland Farms LTD. by deed in Official Record Volume 788, Page 745, to a 5/8 inch rebar set with yellow cap stamped "DLZ Ohio Inc." on the Corporation line for the Village of Quincy and at the northeast corner of a 20.00 acre tract conveyed to Lee W. Davidson and Lynn A. Davidson by deed in Official Record Volume 1293, Page 33, Parcel III, Tract III and the southeast corner of the 16.00 acre tract;

Thence North 84° 33' 34" West a distance of 661.90 feet along a line common to said 20.00 acre and 16.00 acre tracts to a 5/8 inch rebar set with yellow cap stamped "DLZ Ohio Inc." at an angle point on the said corporation line;

Thence North 05° 36' 22" East a distance of 3050.32 feet along the corporation line to a 5/8 inch rebar found with a cap stamped "LEE 6359" at the northeast corner of a 1.397 acre tract conveyed to Gary L. and Ethel Y. Blankenship by deed in Official Record Volume 487, Page 621, a northwest corner the 20 acre Parcel V, Tract II and on the southerly railroad right of way for CSX Transportation Inc., passing a steel T-post found at the southeast corner of said 1.397 acre tract at 2767.88 feet;

Thence North 86° 06' 06" East a distance of 706.18 feet leaving the said corporation line along the railroad right of way to a 5/8 inch rebar set with yellow cap stamped "DLZ Ohio Inc." at the northeasterly corner of the 20.00 acre tract and the northwest corner of a 7.691 acre tract conveyed to the Tim W. Davidson, Trust by deed in Official Record Volume 985, Page 9;

Thence South 05° 37' 56" West a distance of 583.74 feet, leaving the railroad right of way on a line common to of the 20.00 acre tract, the 7.691 acre tract, and an 11.388 acre tract conveyed to Lee W. Davidson, Gina A. Davidson and Lyn A. Davidson by deed in Official Record Volume 1331, Page 506, to a 5/8 inch rebar set with yellow cap stamped "DLZ Ohio Inc." at the southwest corner of said 11.388 acre tract and the northwesterly corner of the 20.00 acre Parcel V, Tract I on the easterly line of the 20 acre Parcel V, Tract II passing a concrete monument found at 1.97 feet;

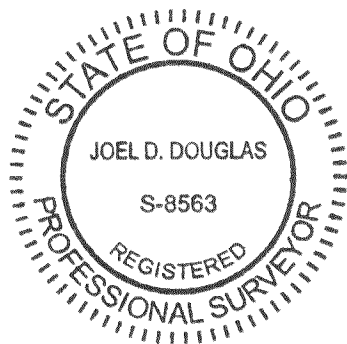
Thence South 84° 11' 07" East a distance of 1293.42 feet along a line common to said 11.388 acre tract, the remainder of an original 12.25 acre tract conveyed to Timothy A. Bell, Co-Trustee et al by Deed in Official Record 1154, Page 697, the 20.00 acre Parcel V, Tract I to a magnetic nail set on the east line of said Section 29 and the centerline of said Carlisle Street (S.R. 235), passing a 1/2 inch rod found at 1092.04 feet, and a 4 inch by 4 inch concrete fence post found at 1263.82 feet;

Thence South 05° 28' 45" West a distance of 1538.50 feet along the section line and the centerline of said Carlisle Street and the east line of the 20.00 acre Parcel V Tract I, and the 25.00 acre tract, to the **TRUE POINT OF BEGINNING** containing 94.804 acres, more or less, of which 1.060 acre lie within the right of way.

The bearings in the above descriptions are based on the grid bearing of South 05° 28' 45" West for the centerline of Carlisle Street (S.R. 235, 60 feet wide) as determined by a GPS network of field observations performed in June, 2021 and are based upon The Ohio State Plane Coordinate System, North Zone, NAD83(2011).

All rebar set are 5/8 inch in diameter, 30 inches in length with a yellow cap stamped "DLZ Ohio Inc.".

I certify that this description is based upon a survey conducted under my direct supervision in June, 2021 and that it and the information contained herein are true and correct to the best of my knowledge.



**DLZ Ohio, Inc.**

*Joel D. Douglas* 6/21/2021

Joel D. Douglas  
Professional Survey No. S-8563

Date

INDEXED ON MAP  
5013

U-28-2021



**DESCRIPTION OF A  
176.675 ACRE TRACT  
SOUTH OF LIBERTY STREET (C.R. 70),  
WEST OF CARLISLE STREET (S.R. 235)**

Situated in Section 29, Town 3, Range 13, Between the Miami Rivers Survey, Miami Township, Logan County, Ohio and being all of the 4.594 acre tract, 3.966 acre tract, 58 acre tract, 5 acre tract, 20 acre tract, 55.09 acre tract and part of the 16 acre tract and 38.00 acre tract conveyed to Lee W. Davidson and Lynn A. Davidson by deed in Official Record Volume 1293, Page 33-38, Parcels I and II, Parcel III, Tracts I, II, and III, Parcel IV, Tract I and Parcel V, Tracts III and IV (all records herein are from the Recorder's Office, Logan County, Ohio) and being more particularly described as follows:

Commence at a 1 inch rod found in a monument box at the southwest corner of said Section 29 and at a 90° angle in the centerline of S.R. 706 (60 feet wide).

Thence South 84° 47' 08" East a distance of 1343.16 feet along the south line of Section 29, to a magnetic nail set at the southeast corner of a 79.00 acre tract conveyed to Lee W. Davidson and Lynn A. Davidson by deed in Official Record Volume 1293, Page 39, and the southwest corner of the 58 acre tract, and the **TRUE POINT OF BEGINNING** of the Parcel herein described;

Thence North 05° 09' 25" East a distance of 3496.39 feet along the line common to said 79.00 acre tract, the 58 acre tract and the 55.09 acre tract, the east line of a 4.28 acre tract conveyed to Lee W. Davidson, Gina A. Davidson and Lyn A. Davidson by deed in Official Record Volume 1236, Page 626 tract five, to 5/8 inch rod found on the southerly railroad right of way for CSX Transportation Inc. and at the northeasterly corner of said 4.28 acre tract and the northwesterly corner of the 55.09 acre tract, passing a 4 inch by 4 inch concrete fence post found on northerly right of way line of S.R. 706 at 31.69 feet;

Thence North 86° 06' 06" East a distance of 1346.88 feet along the line common to the said southerly railroad right of way line and the northerly line of the 55.09 acre tract, to a 5/8 inch rebar set with yellow cap stamped "DLZ Ohio Inc." at a northeasterly corner of the 55.09 acre tract and the northwest corner of a 1.12 acre tract conveyed to Tony L. and Barbara Coy by deed in Official Record Volume 763, Page 106;

Thence South 05° 32' 50" West a distance of 166.94 feet along the line common to said 1.12 acre tract and the 55.09 acre tract to a 4 inch by 4 inch concrete fence post found at southwest corner of said 1.12 acre tract and a northeasterly corner the 55.09 acre tract passing a 4 inch by 4 inch concrete fence post found at 0.75 feet;

Thence South 84° 24' 43" East a distance of 691.04 feet along the line common to the 55.09 acre tract, 3.966 acre tract, 4.594 acre tract, 1.12 acre tract, a 1.034 acre tract conveyed to Jeffrey Q. Hamblin by deed in Official Record Volume 1021, Page 915, and a 1.397 acre tract conveyed to Gary L. and Ethel Y. Blankenship by deed in Official Record Volume 487, Page 621, to a steel tee post found at the southeast corner of said 1.397 acre tract and a northeasterly corner of the 4.594 acre tract and on the corporation line for the Village of Quincy;

Thence South 05° 36' 22" West a distance of 2767.88 feet along the said corporation line and the line common to a 20.00 acre tract conveyed to Lee W. Davidson and Lynn A. Davidson by deed in Official Record 1293, Page 33, Parcel V, Tract II, and said 4.594 acre tract, and said line common extended to a 5/8 inch rebar set with yellow cap stamped "DLZ Ohio Inc." on the north line of said 20 acre Parcel III, Tract III;

Thence South 84° 33' 34" East a distance of 661.90 feet along the corporation line and line common to said 16.00 acre tract and said 20 acre, Parcel III Tract III to a 5/8 inch rebar set with yellow cap stamped "DLZ Ohio Inc." on the west line of a 55 acre tract conveyed to Calland Farms LTD. by deed in Official Record Volume 788, Page 745 at the northeast corner of said 20 acre tract;

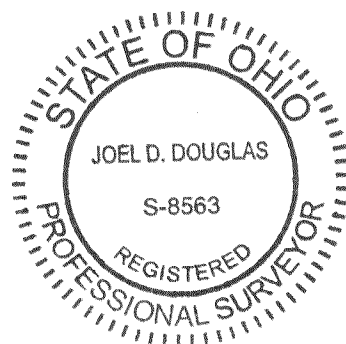
Thence South 05° 23' 58" West a distance of 767.83 feet leaving the said corporation line along the line common to the said 55 acre tract and said 20 acre tract to a point, on the south line of said Section 29 and at a southeasterly corner of the 20 acre tract and the southwesterly corner of said 55 acre tract, referenced by a railroad spike found bearing South 05° 23' 58" West a distance of 5.75 feet, passing a 5/8 inch rebar set with yellow cap stamped "DLZ Ohio Inc." on northerly right of way line of S.R. 706 at 740.76 feet;

Thence North 84° 47' 08" West a distance of 2656.93 feet along the south section line of said Section 29 and the south lines of said 20 acre tract, 5 acre tract and 58 acre tract to the **TRUE POINT OF BEGINNING** containing 176.675 acres, more or less, of which 1.630 acre lie within the right of way.

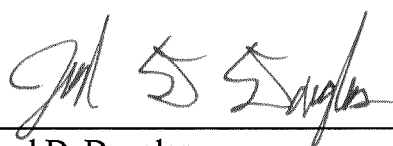
The bearings in the above descriptions are based on the grid bearing of South 05° 28' 45" West for the centerline of Carlisle Street (S.R. 235, 60 feet wide RW) as determined by a GPS network of field observations performed in June, 2021 and are based upon The Ohio State Plane Coordinate System, North Zone, NAD83(2011).

All rebar set are 5/8 inch in diameter, 30 inches in length with a yellow cap stamped "DLZ Ohio Inc.".

I certify that this description is based upon a survey conducted under my direct supervision in June, 2021 and that it and the information contained herein are true and correct to the best of my knowledge.



**DLZ Ohio, Inc.**

 6/21/2021  
Joel D. Douglas Date  
Professional Survey No. S-8563

INDEXED ON MAP  
5013

**LEGEND:**

- 1 INCH REBAR FOUND IN A MONUMENT BOX
- ⊙ MAGNETIC NAIL FOUND
- ⊙ MAGNETIC NAIL SET
- ⊕ 1/2 INCH REBAR ROD FOUND
- 5/8 INCH REBAR ROD FOUND
- ⊙ 5/8 INCH BY 30 INCH REBAR SET WITH YELLOW CAP STAMPED "DLZ OHIO INC."
- ⊠ 4 INCH BY 4 INCH CONCRETE FENCE POST FOUND
- ⊘ STEEL T-POST FOUND
- ⊙ CONCRETE MONUMENT FOUND
- ⊘ RAILROAD SPIKE FOUND
- P.O.C. = POINT OF COMMENCEMENT
- P.O.B. = POINT OF BEGINNING
- R/W = RIGHT-OF-WAY
- C/L = CENTER-LINE
- O.R. = OFFICIAL RECORD
- PG. = PAGE
- N.T.S. = NOT TO SCALE

**ADJOINERS**

- (A) TONY L. COY AND BARBARA COY  
1.12 ACRES  
O.R. 763, PG. 106
- (B) JEFFERY Q. HAMLIN  
1.034 ACRES  
O.R. 1021, PG. 915
- (C) GARY L. BLANKENSHIP AND  
ETHEL Y. BLANKENSHIP  
1.397 ACRES  
O.R. 487, PG. 621

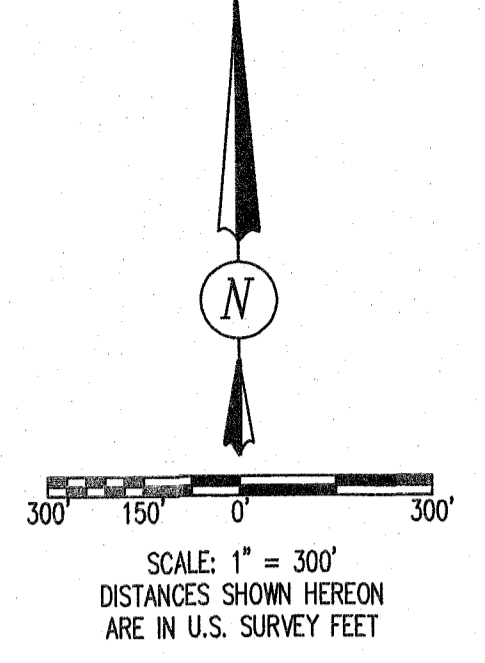
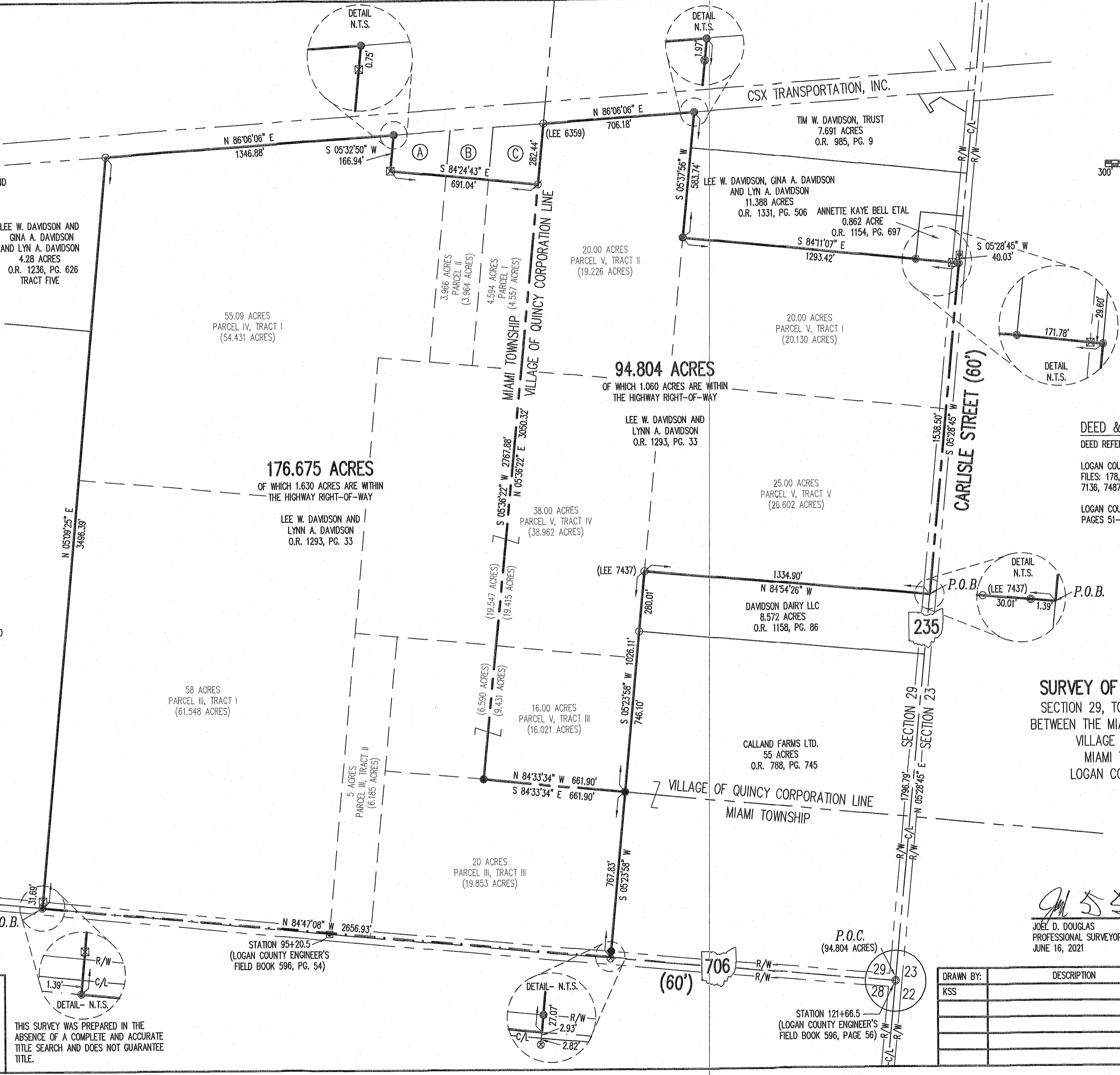
LEE W. DAVIDSON AND  
LYNN A. DAVIDSON  
79 ACRES  
O.R. 1293, PG. 39

**OCCUPATION NOTE:**  
 NO EVIDENCE OF OCCUPATION ALONG  
 BOUNDARY LINES UNLESS OTHERWISE SHOWN

**BASIS FOR BEARINGS:**  
 BEARINGS AND DISTANCES, SHOWN HEREON,  
 ARE DERIVED FROM GPS OBSERVATIONS  
 BASED ON GRID NORTH, OHIO STATE PLANE  
 COORDINATE SYSTEM, NORTH ZONE, NAD83  
 (2011, EPOCH 2010), WITH THE CENTER-LINE  
 OF CARLISLE STREET (OHIO ROUTE 235),  
 HAVING A BEARING OF S 05°28'45" W.

P.O.C. (176.675 ACRES)  
 STATION 68+33  
 (LOGAN COUNTY ENGINEER'S  
 FIELD BOOK 596, PAGE 51)

COPYRIGHT 2021 BY:  
  
 117 N. Madriver Street • Bellefontaine, OH 43311  
 (937) 593-7335 • www.dlz.com  
 Project #2121-2086.00

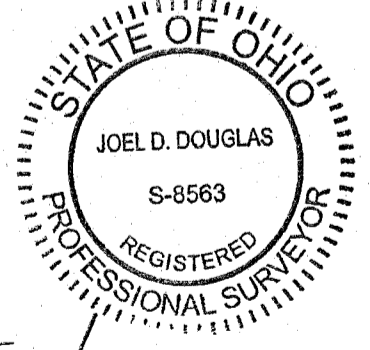


**DEED & SURVEY REFERENCES:**  
 DEED REFERENCES ARE SHOWN HEREON

LOGAN COUNTY ENGINEER'S MAP ROOM  
 FILES: 178, 1717, 3112, 4838, 5013, 7135,  
 7136, 7487 AND R-41

LOGAN COUNTY ENGINEER'S FIELD BOOK 596,  
 PAGES 51-56

**SURVEY OF TWO TRACTS**  
 SECTION 29, TOWN 3, RANGE 13  
 BETWEEN THE MIAMI RIVERS SURVEY  
 VILLAGE OF QUINCY  
 MIAMI TOWNSHIP  
 LOGAN COUNTY, OHIO



*Joel D. Douglas*  
 JOEL D. DOUGLAS  
 PROFESSIONAL SURVEYOR NO. 8563  
 JUNE 16, 2021

DRAWN BY:	DESCRIPTION	REV. NO.	DATE
KSS			6/16/2021