

Leachs Addition to Quincy  
Miami Twp.  
Logan Co., Ohio

Jefferson Ave. (50')

Stone fd.  $5.85^{\circ} 27' 00'' E.$  841.01'  
397.76'

55.26'	55.26'	55.26'	55.26'	55.26'
132.00'	lot # 209	132.00'	132.00'	132.00'
55.55'	55.55'	55.55'	55.55'	55.55'

16 1/2 Alley

55.58'	55.58'	55.58'	55.58'	55.58'
132.00'	lot # 210	132.00'	16 1/2 Alley	132.00'
55.86'	55.86'	55.86'	55.86'	55.86'

Leach Ave  $5.85^{\circ} 27' 00'' E.$   
174.00' 201.00'

55.97'	55.97'	55.97'	55.97'	55.97'
132.00'	lot # 225	132.00'	132.00'	132.00'
54.25'	54.25'	54.25'	54.25'	54.25'

379.11'  
 $5.85^{\circ} 27' 00'' E.$   
561.2' (plat)  
570.22' (map)

2146.86'  
30'  
C.S.R. 706  
P.R. Spk. fd.

C. Nichols  
C. Dill  
R. Simmons  
W. Kennedy

June 2002

67

Mag Nail Set

Mag Nail Set  
71.67' 338.42' 24.96'

58.56'	58.56'	58.56'	58.56'	58.56'
132.01'	lot # 203	132.01'	132.01'	132.01'
79.09'	79.09'	79.09'	79.09'	79.09'

● = R.R. Spks. Set  
○ = 5/8" of cpd. rebar set

81.66'	81.66'	81.66'	81.66'	81.66'
132.01'	145.26'	132.01'	132.01'	132.01'
102.21'	102.21'	102.21'	102.21'	102.21'

P.C. R.R. Curve

131.30'	131.30'	131.30'	131.30'	131.30'
53.45'	54.97'	53.45'	54.97'	54.97'
132.01'	lot # 218	132.01'	132.01'	132.01'

Curve Data  
 $A = 4^{\circ} 22' 27''$   
 $R = 281.479'$   
 $T = 109.41'$   
 $L = 218.70'$   
 $L.C. = 218.45'$   
 $Dd = 2^{\circ} 00' 00''$

55.95'	81.25'	55.95'	81.25'	55.95'
164.10'	164.10'	164.10'	164.10'	164.10'
33'	33'	33'	33'	33'

INDEXED ON MAP  
5146

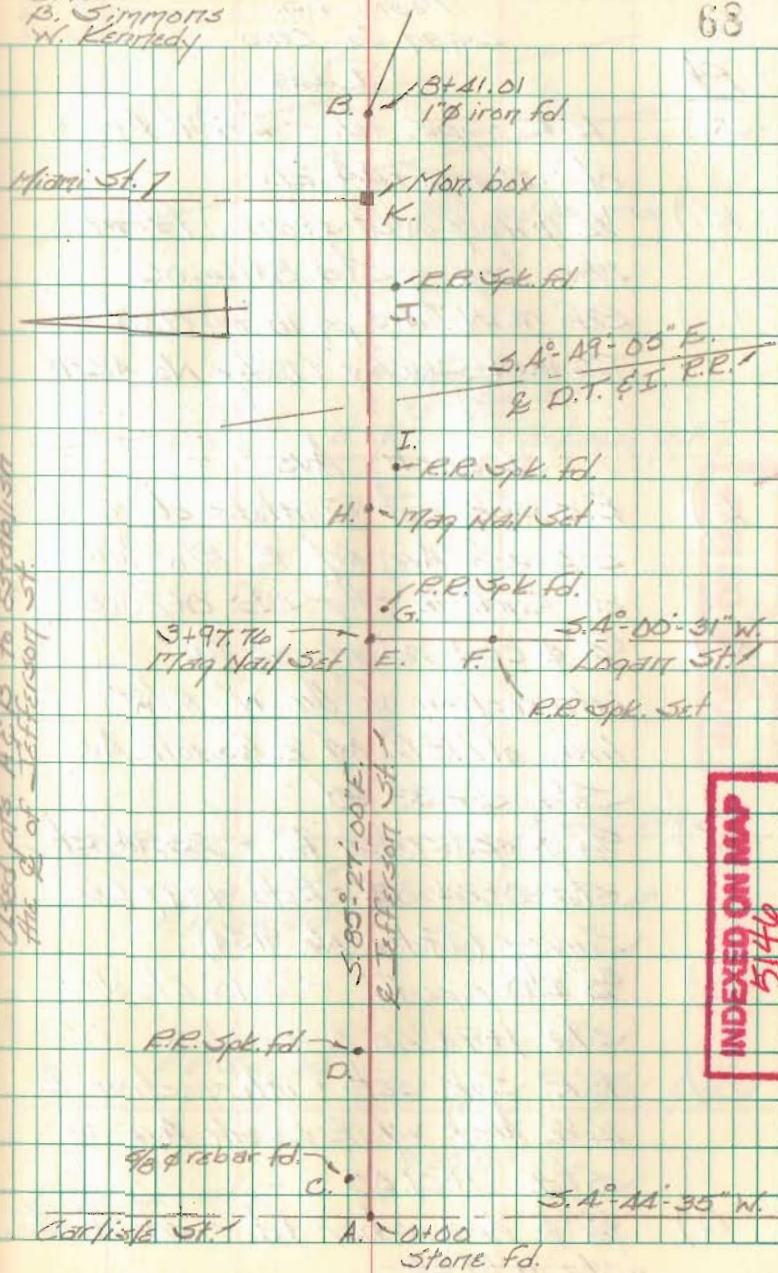
Leach's Addition to Quincy  
Miami Twp.  
Logan Co., Ohio

- | Pt. | Desc.  |
|-----|--|
| A.) | 4" long piece of $\frac{5}{8}$ " $\phi$ cpd. rebar (O.D.O.T.) fd. over stone. (18" deep) - set mag nail straddles & reset short piece of rebar over stone. - Sta. 0+00 for this survey |
|     | Ref: F.Bk. #415, pg. 10 - R/W plans L-19   |
| B.) | 1" $\phi$ iron bar fd. - Sta. 8+41.01 for this survey - Ref: F.Bk. #415, pg. 10  |
| C.) | $\frac{5}{8}$ " $\phi$ rebar fd. - 2.75' Lt. of Sta. 0+01.43   |
| D.) | R.R. Spk. fd. = 1.04' Lt. of Sta. 0+30.11  |
| E.) | Mag Nail Set on line A-B, 397.76' from pt. A - Intersection E Jefferson St. w/ E Logan St.   |
| F.) | R.R. Spk. set on E of Logan St. 25.00' from pt. E.   |
| G.) | R.R. Spk. fd. 0.48' Rt. of Sta. 3+98.38  |
| H.) | Mag Nail Set on line A-B, 477.43' from pt. A - Intersection E Jefferson St. w/ the W. R/W line of the D.T. & T. R.R.   |
| I.) | R.R. Spk. fd. - 1.08' Rt. of Sta. 4+78.11  |

C. Nichols  
C. Dill  
P. Simmons  
W. Kennedy

June 2002

63



Used pts. A & B to establish the E of Jefferson St.

INDEXED ON MAP  
5146

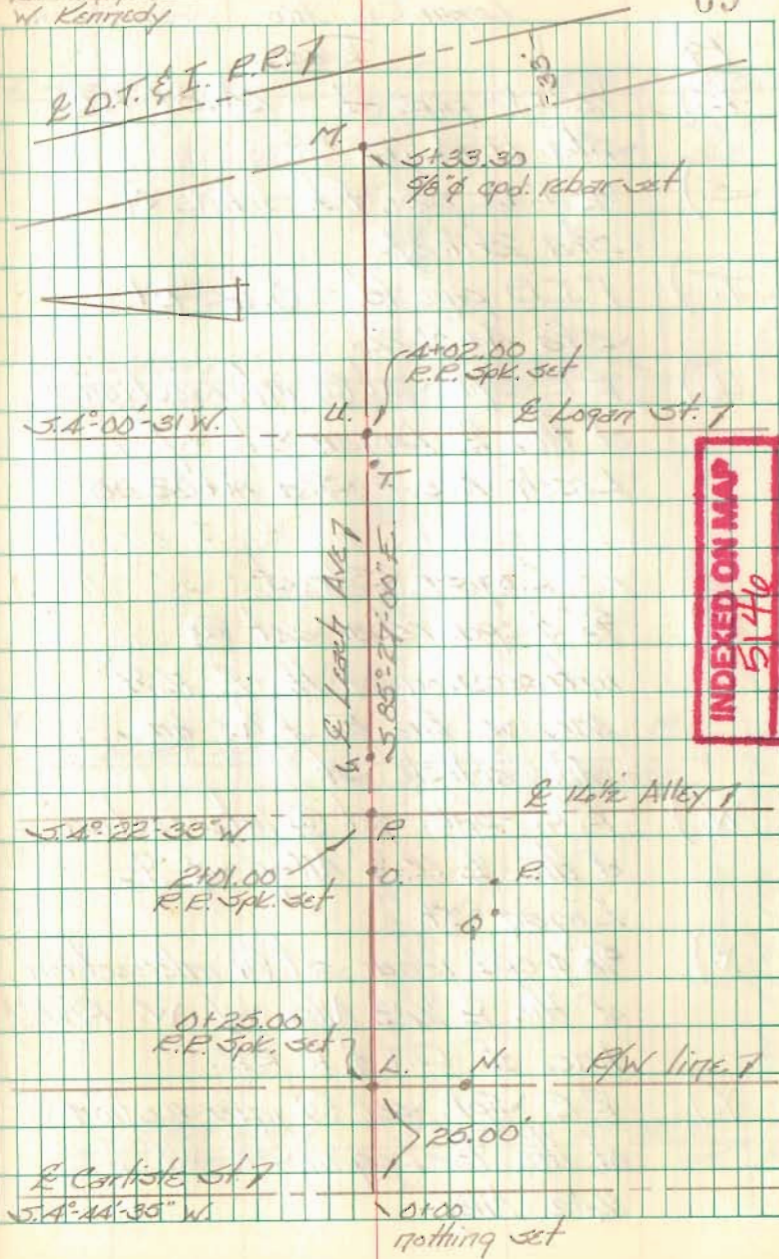
Leach's Addition to Quincy  
Miami Twp.  
Logan Co., Ohio

- Pt. Desc.
- J.) R.R. Spk. fd. - 2.27' Rt.  
of Sta. 5+44.20
- K.) 1/2"  $\phi$  iron over stone, fd. in  
mon. box - Sta. 8+16.05 -  
Ref: F.B.K. #412, pg. 10 - 1948  
Dodson Survey (Index No. 4221)
- Leach Ave.
- L.) R.R. Spk. set @ intersection of  
& Leach Ave. w/ E. R/W line  
of Carlisle St. - Sta. 0+25.00
- M.) 5/8"  $\phi$  cpd. rebar set @  
intersection of the W. R/W  
line of R.R. w/ & Leach Ave.  
Sta. 5+33.30
- N.) 9/8"  $\phi$  cpd. rebar fd. - 23.94' Rt.  
Sta. 0+24.82 - Ref: 1997 Lee  
Survey (Index No. 9134)
- O.) 3/4" I.D. pipe fd. - 0.10' Lt. of  
Sta. 1+94.45
- P.) R.R. Spk. set - intersection &  
1 1/2' Alley w/ & Leach Ave. -  
Sta. 2+01.00
- Q.) 9/8"  $\phi$  cpd. rebar fd. - 24.51' Rt.  
Sta. 1+90.55

C. Nichols  
C. Dill  
D. Simmons  
W. Kennedy

June 2002

69



INDEXED ON MAP  
5146

Leach's Addition to Quincy  
Miami Twp.  
Logan Co. Ohio

- | Pt. | Desc.   |
|-----|---|
| R.) | 1/2" I.D. pipe fd. - 24.87' Rt.<br>Sta. 1494.72                                     |
| S.) | 1/2" I.D. pipe fd. - line OK -<br>Sta. 2411.27                                      |
| T.) | 1" I.D. pipe fd. - 0.65' Rt.<br>Sta. 4401.26  |
| U.) | R.R. Spk. set @ intersection<br>of the E Logan St w/ E<br>Leach Ave. - Sta. 4402.00 |

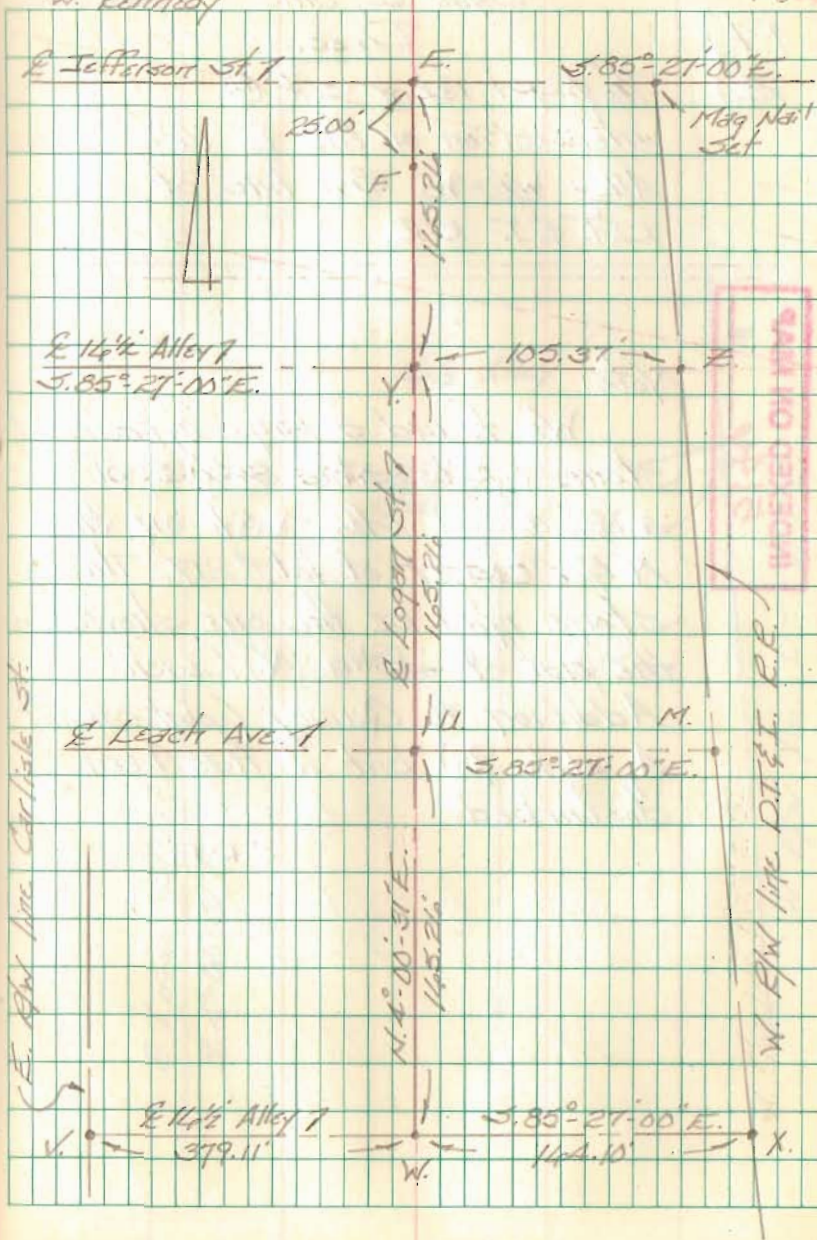
Logan Street

- |     |  |
|-----|--|
| V.) | 5/8" $\phi$ cpd. rebar set @<br>intersection of the E 14 1/2'<br>Alley w/ the E. R/W line<br>of Carlisle St. |
| W.) | R.R. Spk. set @ intersection<br>of the E 14 1/2' Alley w/ E<br>Logan St.                                     |
| X.) | 5/8" $\phi$ cpd. rebar set @ intersection<br>of the E 14 1/2' Alley w/ W. R/W<br>line of D.T. & I. RR.       |
| Y.) | R.R. Spk. set @ intersection<br>of the E Logan St w/ E<br>14 1/2' Alley.                                     |

C. Nichols  
C. Dill  
B. Simmons  
W. Kennedy

JUNE 2002

70



Leach's Addition to Quincy  
Miami Twp.  
Logan Co. Ohio

Pl.)  
Z.)

Desc.  
3/8"  $\phi$  cpd. rebar set @  
intersection of the E 14 1/2'  
Alley w/ W. R/W line of  
D.T. & I. R.R.

INDEXED ON MAP  
5144

Note:

We found a large cylindrical  
stone on its side 0.5' S. of  
a 3/8"  $\phi$  cpd. rebar set on the  
N.E. corner of lot #217. This  
stone may be the one shown on  
the plat of John N. Leach's  
Addition to Quincy (plat cabinet  
A, slide 98) but it has been  
disturbed.

C.R.P.

C. Nichols  
C. Dill  
B. Simmons  
W. Kennedy

JUNE 2002

71

