

Lee Surveying and Mapping Co., Inc.

Land Surveys • Topography • Subdivisions • Construction Layout

117 N. Madriver St.
Bellefontaine OH 43311



Phone: (937) 593-7335
Fax: (937) 593-7444

ARNETT 2.727 ACRES

Lying in Section 23, Town 3, Range 13, Village of Quincy, Miami Township, Logan County, Ohio.

Being all of the remainder of the Gerald E. Arnett original 3 acre tract, a second tract-no acreage given, original 1.10 acre tract and all of the original 0.18 acre tract, original 0.51 acre tract and original 0.25 acre tract as deeded and described in Official Record 101, Page 640, Tracts I, II, III, IV and V of the Logan County Records of Deeds and being more particularly described as follows:

Commencing on a 5/8 inch iron rod found with a Logan County Engineer's cap in a monument box on the intersection of the center-lines of New Street and Miami Street.

THENCE, with the center-line of Miami Street (49.5 feet wide), S 4°-14'-41"W, a distance of 197.45 feet to a MAG nail set at the intersection of the south right-of-way of the C.C.C. & St. L. Railroad.

THENCE, with the south right-of-way of the C.C.C. & St. L. Railroad, S 85°-09'-23"W, a distance of 25.06 feet to a 5/8 inch iron rod set on the west right-of-way of Miami Street at the TRUE POINT OF BEGINNING.

THENCE, with the west right-of-way of Miami Street, S 4°-14'-41"W, a distance of 91.95 feet to a 5/8 inch iron rod set.

THENCE, with the north line of the Arnett-Dammeyer, Inc., tract (Vol. 377, Pg. 656) and the north line of a tract of unknown ownership, S 85°-09'-23"W, a distance of 132.00 feet to a 5/8 inch iron rod set, passing a 5/8 inch iron rod set at 127.95 feet.

THENCE, with a tract of unknown ownership, the following three courses:

S 8°-26'-53"W, a distance of 40.00 feet to a 5/8 inch iron rod set.

S 83°-20'-52"W, a distance of 17.00 feet to a 5/8 inch iron rod set.

S 4°-14'-49"W, a distance of 43.90 feet to a 5/8 inch iron rod set.



THENCE, with the west line of the Clyde W. Hull 0.333 acre tract (O.R. 11, Pg. 66, Parcel I), S 4°-14'-49"W, a distance of 5.87 feet to a 5/8 inch iron rod set.

Lee Surveying and Mapping Co., Inc.

Land Surveys • Topography • Subdivisions • Construction Layout

117 N. Madriver St.
Bellefontaine OH 43311



Phone: (937) 593-7335
Fax: (937) 593-7444

THENCE, with the north lines of the Clyde W. Hull 0.125 acre tract (O.R. 11, Pg. 66, Parcel II) and the Alan M. Anderson 0.36 acre tract (O.R. 887, Pg. 560), N 85°-46'-00"W, a distance of 141.50 feet to a 5/8 inch iron rod set.

THENCE, with the west line of the said 0.36 acre tract, S 4°-02'-26"W, a distance of 32.61 feet to a 5/8 inch iron rod set.

THENCE, with the north line of the Arnett and Dammeyer, Inc., 0.36 acre tract (Vol. 369, Pg. 14, Tract II), N 85°-46'-01"W, a distance of 177.19 feet to a 5/8 inch iron rod set.

THENCE, with the lines of the ABN AMRO Mortgage Group, Inc., 0.32 acre tract (O.R. 882, Pg. 359), the following two courses:

N 85°-46'-01"W, a distance of 102.00 feet to a 5/8 inch iron rod set.

S 4°-13'-58"W, a distance of 137.00 feet to a point 15.00 feet north of and perpendicular to the center-line of Mill Street, passing a 5/8 inch iron rod set at 132.00 feet.

THENCE, with the south lines of the said 0.32 acre tract and the aforesaid Arnett and Dammeyer, Inc. 0.36 acre tract and within the right-of-way of Mill Street (40 feet wide) and 15.00 feet north of and parallel to the center-line of Mill Street, S 85°-46'-01"E, a distance of 191.00 feet to a point.

THENCE, with the lines of the aforesaid Arnett and Dammeyer, Inc. 0.36 acre tract, the following two courses:

N 4°-13'-58"E, a distance of 98.00 feet to a 5/8 inch iron rod set, passing a 5/8 inch iron rod set at 5.00 feet.

S 85°-46'-01' E, a distance of 88.33 feet to a 5/8 inch iron rod set.

THENCE, with the west line of the aforesaid Anderson 0.36 acre tract, S 4°-02'-26"W, a distance of 103.00 feet to a point 10.00 feet north of and perpendicular to the center-line of Mill Street, passing a 5/8 inch iron rod set at 93.00 feet.

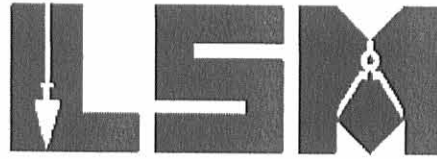
THENCE, within the right-of-way of Mill Street and 10.00 feet north of and parallel to the center-line of Mill Street, N 85°-46'-01"W, a distance of 88.67 feet to a point.

INDEXED ON MAP
5600 1D-2

Lee Surveying and Mapping Co., Inc.

Land Surveys • Topography • Subdivisions • Construction Layout

117 N. Madriver St.
Bellefontaine OH 43311



Phone: (937) 593-7335
Fax: (937) 593-7444

THENCE, with the east line of the aforesaid Arnett and Dammeyer, Inc., 0.36 acre tract extended and within the right-of-way of Mill Street, S 4°-13'-58"W, a distance of 10.00 feet to a MAG nail set on the center-line of Mill Street.

THENCE, with the center-line of Mill Street, N 85°-46'-01"W, a distance of 204.36 feet to a MAG nail set on the east right-of-way of the D.T. & I. Railroad, passing railroad spikes found at 89.00 feet and 191.00 feet.

THENCE, with the east right-of-way of the D.T. & I. Railroad, the following two courses:

With a curve to the left, having a central angle of 5°-46'-50", a radius of 2446.04 feet, an arc length of 246.78 feet, a chord bearing N 29°-01'-00"W, a distance of 246.67 feet to a 5/8 inch iron rod set, passing a 5/8 inch iron rod set at a chord distance of 23.24 feet.

N 30°-24'-22"W, a distance of 18.75 feet to a 5/8 inch iron rod set on the south right-of-way of the C.C.C. & St. L. Railroad.

THENCE, with the right-of-way of the C.C.C. & St. L. Railroad, the following three courses:

N 85°-09'-23"E, a distance of 159.11 feet to a 5/8 inch iron rod set.

N 4°-50'-35"W, a distance of 51.30 feet to a 5/8 inch iron rod set.

N 85°-09'-23"E, a distance of 588.20 feet to the point of beginning.

Containing 2.727 acres, of which 0.095 acre is within the highway right-of-way.

The basis for bearings is the center-line of Miami Street, being S 4°-14'-41"W, and all other bearings are from angles and distances measured in a field survey by Lee Surveying and Mapping Co., Inc. on September 24, 2007.



ORIGINAL STAMP IN GREEN

Description prepared by:

William K. Bruce
Professional Surveyor 7437
September 24, 2007



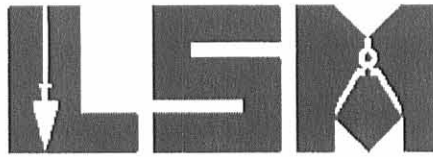
4488077

REC'D 10-4-07 SMY OK

Lee Surveying and Mapping Co., Inc.

Land Surveys • Topography • Subdivisions • Construction Layout

117 N. Madriver St.
Bellefontaine OH 43311



Phone: (937) 593-7335
Fax: (937) 593-7444

UNKNOWN OWNERSHIP 0.016 ACRE

Lying in Section 23, Town 3, Range 13, Village of Quincy, Miami Township, Logan County, Ohio.

Being a tract of unknown ownership and being more particularly described as follows:

Commencing on a 5/8 inch iron rod found with a Logan County Engineer's cap in a monument box on the intersection of the center-lines of New Street and Miami Street.

THENCE, with the center-line of Miami Street (49.5 feet wide), S 4°-14'-41"W, a distance of 197.45 feet to a MAG nail set at the intersection of the south right-of-way of the C.C.C. & St. L. Railroad.

THENCE, with the south right-of-way of the C.C.C. & St. L. Railroad, S 85°-09'-23"W, a distance of 25.06 feet to a 5/8 inch iron rod set on the west right-of-way of Miami Street.

THENCE, with the west right-of-way of Miami Street, S 4°-14'-41"W, a distance of 91.95 feet to a 5/8 inch iron rod set.

THENCE, with the north line of the Arnett-Dammeyer, Inc., tract (Vol. 377, Pg. 656), S 85°-09'-23"W, a distance of 127.95 feet to a 5/8 inch iron rod set at the TRUE POINT OF BEGINNING.

THENCE, with the west line of the said Arnett-Dammeyer, Inc., tract, S 4°-14'-41"W, a distance of 37.66 feet to a point on the north line of the Arnold B. Conley, III, et al, 0.20 acre tract (O.R. 632, Pg. 30).

THENCE, with the north line of the said 0.20 acre tract, N 89°-41'-19"W, a distance of 0.60 feet to a 5/8 inch iron rod set.

THENCE, with the west line of the said 0.20 acre tract, S 29°-00'-01"W, a distance of 55.00 feet to a 5/8 inch iron rod set.

THENCE, with the lines of the Gerald E. Arnett original 1.10 acre tract (O.R. 101, Pg. 640, Tract II), the following four courses:

N 4°-14'-49"E, a distance of 43.90 feet to a 5/8 inch iron rod set.



Lee Surveying and Mapping Co., Inc.

Land Surveys • Topography • Subdivisions • Construction Layout

117 N. Madriver St.
Bellefontaine OH 43311



Phone: (937) 593-7335
Fax: (937) 593-7444

N 83°-20'-52"E, a distance of 17.00 feet to a 5/8 inch iron rod set.

N 8°-26'-53"E, a distance of 40.00 feet to a 5/8 inch iron rod set.

N 85°-09'-23"E, a distance of 4.05 feet to the point of beginning.

Containing 0.016 acre.

The basis for bearings is the center-line of Miami Street, being S 4°-14'-41"W, and all other bearings are from angles and distances measured in a field survey by Lee Surveying and Mapping Co., Inc. on September 24, 2007.



ORIGINAL STAMP IN GREEN

Description prepared by:

A handwritten signature in black ink that reads 'William K. Bruce'.

William K. Bruce
Professional Surveyor 7437
October 1, 2007

4488077



REVISED 10-4-07 SUMON

Lee Surveying and Mapping Co., Inc.

Land Surveys • Topography • Subdivisions • Construction Layout

117 N. Madriver St.
Bellefontaine OH 43311



Phone: (937) 593-7335
Fax: (937) 593-7444

UNKNOWN OWNERSHIP 0.010 ACRE

Lying in Section 23, Town 3, Range 13, Village of Quincy, Miami Township, Logan County, Ohio.

Being a tract of unknown ownership and being more particularly described as follows:

Commencing on a 5/8 inch iron rod found with a Logan County Engineer's cap in a monument box on the intersection of the center-lines of New Street and Miami Street.

THENCE, with the center-line of Miami Street (49.5 feet wide), S 4°-14'-41"W, a distance of 340.85 feet to a MAG nail set, passing a MAG nail set at the intersection of the south right-of-way of the C.C.C. & St. L. Railroad at 197.45 feet.

THENCE, with the north line of the Arnold B. Conley, III, et al, 0.20 acre tract (O.R. 632, Pg. 30), N 89°-41'-19"W, a distance of 24.81 feet to a 5/8 inch iron rod set on the west right-of-way of Miami Street at the TRUE POINT OF BEGINNING.

THENCE, with the north line of the said 0.20 acre tract, N 89°-41'-19"W, a distance of 100.95 feet to a 5/8 inch iron rod set.

THENCE, with the south line of the Arnett-Dammeyer, Inc., tract (Vol. 377, Pg. 656), N 85°-09'-23"E, a distance of 101.99 feet to a 5/8 inch iron rod set on the west right-of-way of Miami Street.

THENCE, with the west right-of-way of Miami Street, S 4°-14'-41"W, a distance of 9.18 feet to the point of beginning.

Containing 0.010 acre.

The basis for bearings is the center-line of Miami Street, being S 4°-14'-41"W, and all other bearings are from angles and distances measured in a field survey by Lee Surveying and Mapping Co., Inc. on September 24, 2007.



Description prepared by:

William K. Bruce

William K. Bruce
Professional Surveyor 7437
September 24, 2007



4488077

REV'D 10-4-07 smy au
Lee Surveying and Mapping Co., Inc.

Land Surveys • Topography • Subdivisions • Construction Layout

117 N. Madriver St.
Bellefontaine OH 43311



Phone: (937) 593-7335
Fax: (937) 593-7444

**ARNETT-DAMMEYER, INC. VS CONLEY
0.001 ACRE**

Lying in Section 23, Town 3, Range 13, Village of Quincy, Miami Township,
Logan County, Ohio.

Being out of the Arnett-Dammeyer, Inc., tract as deeded and described in
Volume 377, Page 656 of the Logan County Records of Deeds and the Arnold B.
Conley, III, etal, 0.20 acre tract as deeded and described in Official Record 632,
Page 30 of the Logan County Records of Deeds and being more particularly described
as follows:

Commencing on a 5/8 inch iron rod found with a Logan County Engineer's cap
in a monument box on the intersection of the center-lines of New Street and Miami
Street.

THENCE, with the center-line of Miami Street (49.5 feet wide), S 4°-14'-41"W,
a distance of 340.85 feet to a MAG nail set, passing a MAG nail set at the
intersection of the south right-of-way of the C.C.C. & St. L. Railroad at 197.45 feet.

THENCE, with the north line of the Arnold B. Conley, III, etal, 0.20 acre tract,
S 89°-41'-19"W, a distance of 125.76 feet to a 5/8 inch iron rod set at the TRUE
POINT OF BEGINNING, passing a 5/8 inch iron rod set at 24.81.

THENCE, with the south line of the said Arnett-Dammeyer, Inc., tract,
S 85°-09'-23"W, a distance of 25.96 feet to a 5/8 inch iron rod set.

THENCE, with the west line of the said Arnett-Dammeyer, Inc., tract,
N 4°-14'-41"E, a distance of 2.34 feet to a point.

THENCE, with the north line of the aforesaid 0.20 acre tract, S 89°-41'-19"E,
a distance of 25.69 feet to the point of beginning.

Containing 0.001 acre.

The basis for bearings is the center-line of Miami Street, being S 4°-14'-41"W,
and all other bearings are from angles and distances measured in a field survey by
Lee Surveying and Mapping Co., Inc. on September 24, 2007.



Description prepared by:

A handwritten signature in black ink that reads 'William K. Bruce'.

William K. Bruce
Professional Surveyor 7437
October 1, 2007



4488077

REV'D 10-4-07 SMM OK

Lee Surveying and Mapping Co., Inc.

Land Surveys • Topography • Subdivisions • Construction Layout

117 N. Madriver St.
Bellefontaine OH 43311



Phone: (937) 593-7335
Fax: (937) 593-7444

ARNETT-DAMMEYER, INC. 0.116 ACRE

Lying in Section 23, Town 3, Range 13, Village of Quincy, Miami Township, Logan County, Ohio.

Being all of the Arnett-Dammeyer, Inc., tract as deeded and described in Volume 377, Page 656 of the Logan County Records of Deeds and being more particularly described as follows:

Commencing on a 5/8 inch iron rod found with a Logan County Engineer's cap in a monument box on the intersection of the center-lines of New Street and Miami Street.

THENCE, with the center-line of Miami Street (49.5 feet wide), S 4°-14'-41"W, a distance of 197.45 feet to a MAG nail set at the intersection of the south right-of-way of the C.C.C. & St. L. Railroad.

THENCE, with the south right-of-way of the C.C.C. & St. L. Railroad, S 85°-09'-23"W, a distance of 25.06 feet to a 5/8 inch iron rod set on the west right-of-way of Miami Street.

THENCE, with the west right-of-way of Miami Street, S 4°-14'-41"W, a distance of 91.95 feet to a 5/8 inch iron rod set at the TRUE POINT OF BEGINNING.

THENCE, with the west right-of-way of Miami Street, S 4°-14'-41"W, a distance of 40.00 feet to a 5/8 inch iron rod set.

THENCE, with the north line of a tract of unknown ownership, S 85°-09'-23"W, a distance of 101.99 feet to a 5/8 inch iron rod set.

THENCE, within the Arnold B. Conley, III, etal, 0.20 acre tract (O.R. 632, Pg. 30), S 85°-09'-23"W, a distance of 25.96 feet to a 5/8 inch iron rod set.

THENCE, within the said 0.20 acre tract, N 4°-14'-41"E, a distance of 2.34 feet to a point.

THENCE, with an east line of a tract of unknown ownership, N 4°-14'-41"E, a distance of 37.66 feet to a 5/8 inch iron rod set.



Lee Surveying and Mapping Co., Inc.

Land Surveys • Topography • Subdivisions • Construction Layout

117 N. Madriver St.
Bellefontaine OH 43311



Phone: (937) 593-7335
Fax: (937) 593-7444

THENCE, with a south line of the Gerald E. Arnett original 1.10 acre tract, (O.R. 101, Pg. 640, Tract II), N 85°-09'-23"E, a distance of 127.95 feet to the point of beginning.

Containing 0.116 acre.

The basis for bearings is the center-line of Miami Street, being S 4°-14'-41"W, and all other bearings are from angles and distances measured in a field survey by Lee Surveying and Mapping Co., Inc. on September 24, 2007.



ORIGINAL STAMP IN GREEN

Description prepared by:

A handwritten signature in black ink that reads 'William K. Bruce'.

William K. Bruce
Professional Surveyor 7437
October 1, 2007

4488077



REC'D 10-4-07 SMM OK
Lee Surveying and Mapping Co., Inc.

Land Surveys • Topography • Subdivisions • Construction Layout

117 N. Madriver St.
Bellefontaine OH 43311



Phone: (937) 593-7335
Fax: (937) 593-7444

**ARNETT AND DAMMEYER, INC.
0.359 ACRE**

Lying in Section 23, Town 3, Range 13, Village of Quincy, Miami Township, Logan County, Ohio.

Being all of the Arnett and Dammeyer, Inc., 0.36 acre tract as deeded and described in Volume 369, Page 14, Tract II of the Logan County Records of Deeds and being more particularly described as follows:

Commencing on a 1 inch square iron bar found on the intersection of the center-lines of Mill Street and Miami Street.

THENCE, with the center-line of Mill Street (40 feet wide), N 85°-46'-01"W, a distance of 315.56 feet to a MAG nail set.

THENCE, with the west line of the Alan M. Anderson 0.36 acre tract (O.R. 887, Pg. 560), N 4°-02'-26"E, a distance of 113.00 feet to a 5/8 inch iron rod set at the TRUE POINT OF BEGINNING, passing a 5/8 inch iron rod set at 20.00 feet.

THENCE, with the lines of the Gerald E. Arnett, original 0.25 acre tract (O.R. 101, Pg. 640, Tract V), the following two courses:

N 85°-46'-01"W, a distance of 88.33 feet to a 5/8 inch iron rod set.

S 4°-13'-58"W, a distance of 98.00 feet to a point 15.00 feet north of and perpendicular to the center-line of Mill Street, passing a 5/8 inch iron rod set at 93.00 feet.

THENCE, with a north line of the remainder of the Gerald E. Arnett original 3 acre tract (O.R. 101, Pg. 640, Tract I) and within the right-of-way of Mill Street and 15.00 feet north of and parallel to the center-line of Mill Street, N 85°-46'-01"W, a distance of 89.00 feet to a point.

THENCE, with the east line of the ABN AMRO Mortgage Group, Inc., 0.32 acre tract (O.R. 882, Pg. 359), N 4°-13'-58"E, a distance of 137.00 feet to a 5/8 inch iron rod set, passing a 5/8 inch iron rod set at 5.00 feet.

THENCE, with a south line of the remainder of the aforesaid 3 acre tract and the Gerald E. Arnett tract (O.R. 101, Pg. 640, Tract I, second tract), S 85°-46'-01"E, a distance of 177.19 feet to a 5/8 inch iron rod set.



Lee Surveying and Mapping Co., Inc.

Land Surveys • Topography • Subdivisions • Construction Layout

117 N. Madriver St.
Bellefontaine OH 43311



Phone: (937) 593-7335
Fax: (937) 593-7444

THENCE, with the west line of the aforesaid Anderson 0.36 acre tract, S 4°-02'-26"W, a distance of 39.00 feet to the point of beginning

Containing 0.359 acre.

The basis for bearings is the center-line of Miami Street, being S 4°-14'-41"W, and all other bearings are from angles and distances measured in a field survey by Lee Surveying and Mapping Co., Inc. on September 24, 2007.



ORIGINAL STAMP IN GREEN

Description prepared by:

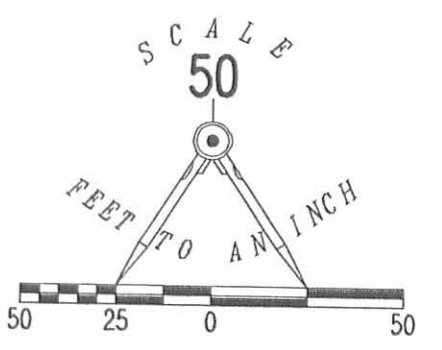
A handwritten signature in black ink that reads 'William K. Bruce'.

William K. Bruce
Professional Surveyor 7437
October 1, 2007

4488077



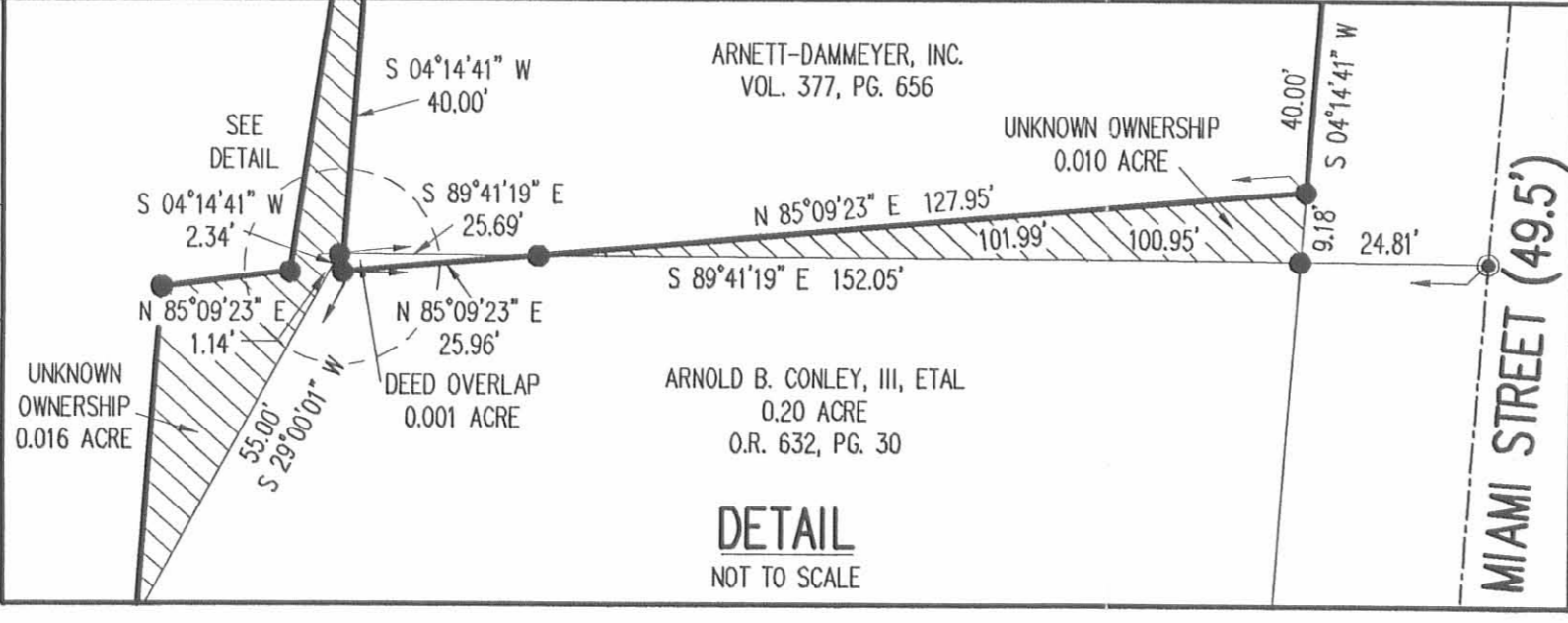
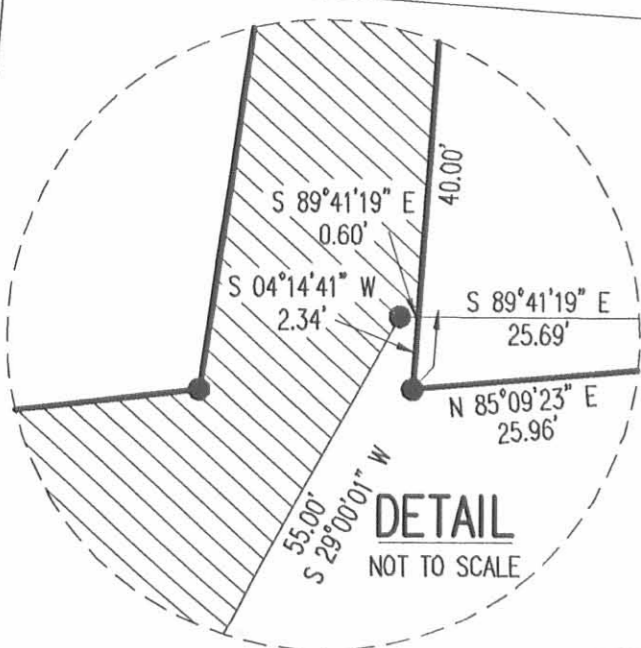
235



NEW STREET (60')

MIAMI STREET (49.5')

CARLISLE STREET (60')



DETAIL NOT TO SCALE

DETAIL NOT TO SCALE

- LEGEND:
- 1 INCH SQUARE IRON BAR FOUND
 - ⊗ RAILROAD SPIKE FOUND
 - MAG NAIL SET
 - ⊠ 5/8 INCH IRON ROD WITH LOGAN COUNTY ENGINEER'S CAP IN MONUMENT BOX
 - 5/8 INCH IRON ROD SET

C.C.C. & ST. L. R/R

WESTBOUND TRACTS
EASTBOUND TRACTS

RETRACEMENT SURVEY OF THE GERALD E. ARNETT ORIGINAL 3 ACRE TRACT, A SECOND TRACT—NO ACREAGE GIVEN, ORIGINAL 1.10 ACRE TRACT, ORIGINAL 0.18 ACRE TRACT, ORIGINAL 0.51 ACRE TRACT AND ORIGINAL 0.25 ACRE TRACT, OFFICIAL RECORD 101, PAGE 640 TRACTS I, II, III, IV & V, RETRACEMENT SURVEY OF THE ARNETT-DAMMEYER, INC. TRACT VOLUME 377, PAGE 656 AND RETRACEMENT SURVEY OF THE ARNETT AND DAMMEYER, INC. 0.36 ACRE TRACT VOLUME 369, PAGE 14 TRACT II SECTION 23, TOWN 3, RANGE 13 VILLAGE OF QUINCY MIAMI TOWNSHIP LOGAN COUNTY, OHIO

SURVEYED BY:

William K. Bruce
WILLIAM K. BRUCE
PROFESSIONAL SURVEYOR 7437
SEPTEMBER 24, 2007



COPYRIGHT 2007 BY:
LEE SURVEYING & MAPPING CO., INC.
117 North Madriver Street
BELLEFONTAINE, OHIO 43311
(937) 593-7335
surveys@lsminc.us
KSS D0907 4488077ALT 4488077.ASC L-4488-2

SECTION 29, TOWN 3, RANGE 13
SECTION 23, TOWN 3, RANGE 13

D.T.&I. R/R

YOST STREET

MILL STREET (40')

MIAMI STREET (49.5')

2.727 ACRES
OF WHICH 0.095 ACRE IS WITHIN THE HIGHWAY RIGHT-OF-WAY

0.359 ACRE
OF WHICH 0.010 ACRE IS WITHIN THE HIGHWAY RIGHT-OF-WAY

0.116 ACRE

CURVE	DELTA ANGLE	RADIUS	ARC LENGTH	CHORD BEARING	CHORD LENGTH
C1	05°46'50"	2446.04'	246.78'	N 29°01'00" W	246.67'

2 WORKING DAYS
BEFORE YOU DIG
CALL TOLL FREE 800-362-2764
OHIO UTILITIES PROTECTION SERVICE

INDEXED ON MAP
5000 IP

GERALD E. ARNETT ETUX 1.15 Ac.
(12-28-73)

S. 84°-26' E. 102.00'

5/8" IRON BAR

5/8" IRON BAR
NEAR OLD
WOOD COR.
POST.

N

132.00'

DANIEL L. MANNING
(10-4-71) ETUX

DEED VOL. 337 PAGE 213

102.0' X 137.0'

13,974.00 sq'

OR

0.32 Ac.

N. 5°-34' E.

132.00'

LOUIS E. MANN ETUX
0.36 Ac.

S. 5°-34' W.

5/8" IRON BAR

R.R. SPK.
IN TREE
ROOT

RIGHT OF WAY

LINE OF MILL ST.

NORTH LINE OF SIDEWALK IS PROPERTY LINE

4.0' SIDEWALK

20.0'

R.R. SPIKE

S. 84°-26' E.

102.00'

R.R. SPIKE

62.64' TO 1" IRON BAR AT
D.T.C.I. RR. R/W.
33.0' FROM E

493.25' TO 1" IRON BAR - E OF
MIAMI ST.

MILL ST. - 40'

SURVEYED AND PLATTED BY:
DANIEL E. GILBERT, P.S.
REG. SUR. NO. 5402
1041 N. MAIN ST.
BELLEFONTAINE, OHIO 43311

MANNING SURVEY
SECTION 23 T.3 R.13
VILLAGE OF QUINCY
MIAMI TOWNSHIP
LOGAN COUNTY, OHIO
20 OCTOBER 5, 1974
SCALE: 1"=20'

INDEXED ON MAP