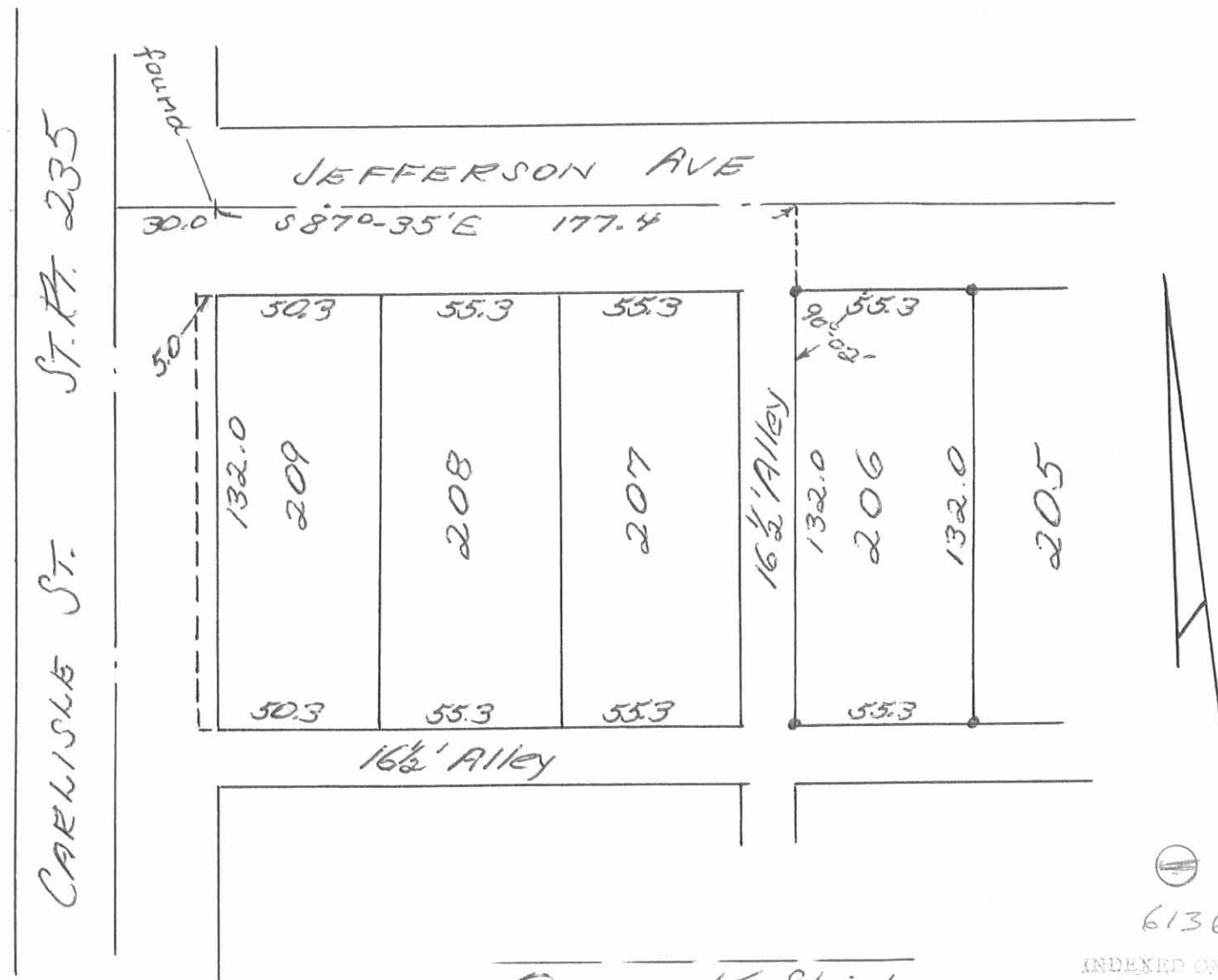


LARRY EDWARDS

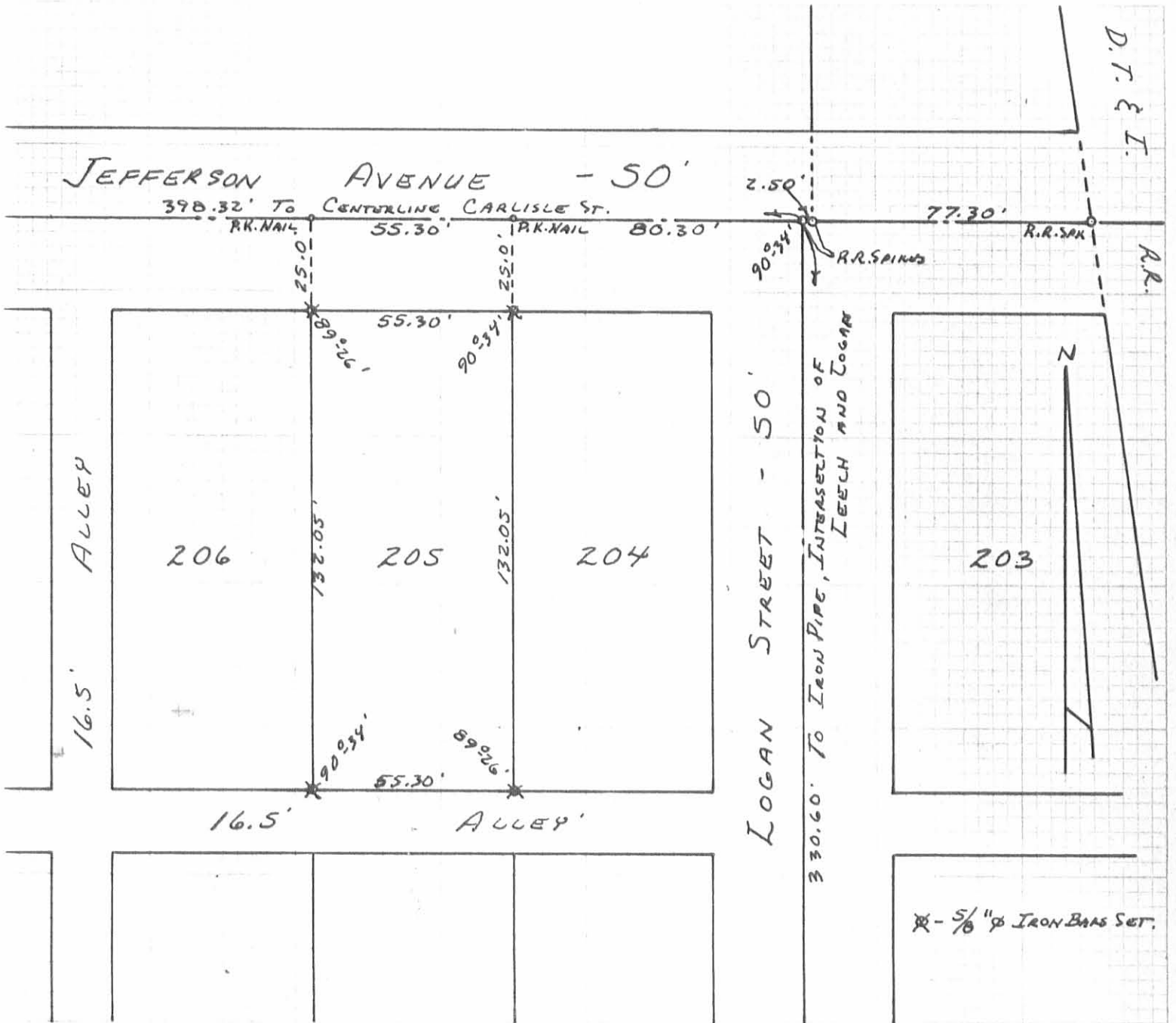
QUINCY, OHIO

LOT 206 J.N. LEACHES ADDITION



Owen K. Stirk
Surveyor 4271
June, 1973

61361P
INDEXED ON MAP



6136 2P

INDEXED ON MAP

LOT No. 205 SURVEY
 J. N. LEACHES ADDITION
 SECTION 23 T. 3. R. 13
 VILLAGE OF QUINCY
 MIAMI TOWNSHIP
 LOGAN COUNTY, OHIO
 JULY 31, 1976

SURVEYED AND PLATED BY:
 DANIEL E. GILBERT, P.S.
 REG. SUR. NO. 5402
 1041 N. MAIN ST.
 BELLEFONTAINE, OHIO 43311

SCALE: 1" = 40'