

296

Magnetic Mer. var. 30° E

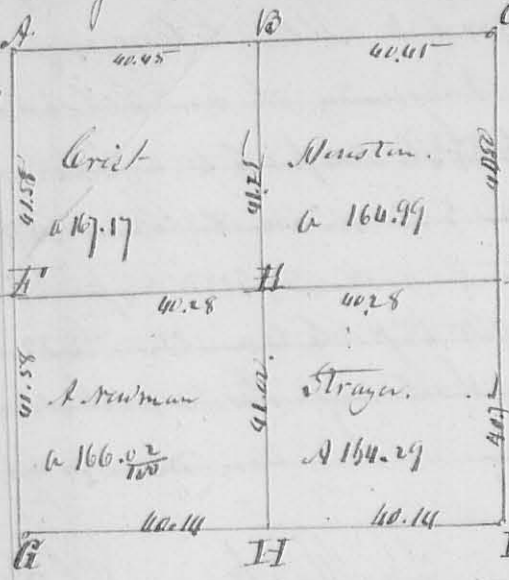
Description of Corner.

S10.731213

m. 128.

N^o 433

8442



- A. Hickory 12 L. S. 51 W. 21 S. (down).
- ditto 12 L. S. N. 26 W. 30. (down) planted Stam.
- B White Oak 15 L. S. 54 E. 23 Links.
- ditto - S. N. 80 W. 15 Links.
- C. Corner tree all down. Stam planted.
- D. Jack O. 6 L. S. 20 S. 48 W. 5 Links & Stam.
- Elm 12 L. S. N. 80 E. 61 "
- E White O. 15 L. S. East 7 "
- ditto 6 L. S. N. 14 W. 17 "
- F Buckskin 8 L. S. 55 W. 31 "

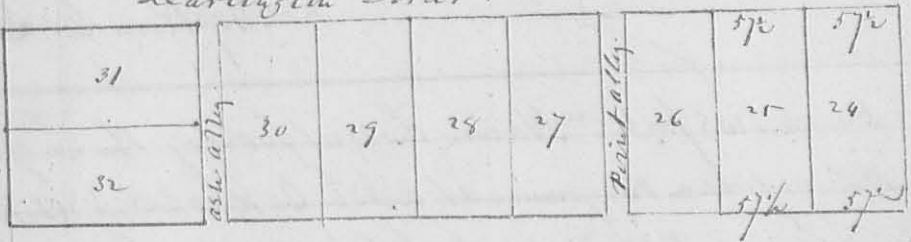
a White Oak 20 L. S. N. 80 E. 57 Links, + Stam - C. Buck 6 L. S. 58 E. 3 Links. then 18. 1/24 N. 19 E. H Sycamore 15 L. S. 58 E. 52 Links, + Stam. cap of creek - I. S. E. Corner of Sect. Bearing tree all decayed. at same time
 Strayer
 Survey for N. Strayer. Beginning at D. thence East 12 chains to Red Oak 18 L. S. E. corner thence S. W. 25 chains to a 12 inch Walnut 3 L. S. Corner tree, thence West 12 chains to a Dogwood 6 L. S. corner tree, thence N. W. 25 chains to the beginning containing 30 acres.
 Survey on Dec. 4, 5 & 6th. L. S. H. P. Kins Co. S. L. C. O.

Charlinton Street.

434

8443

Liberty Street.



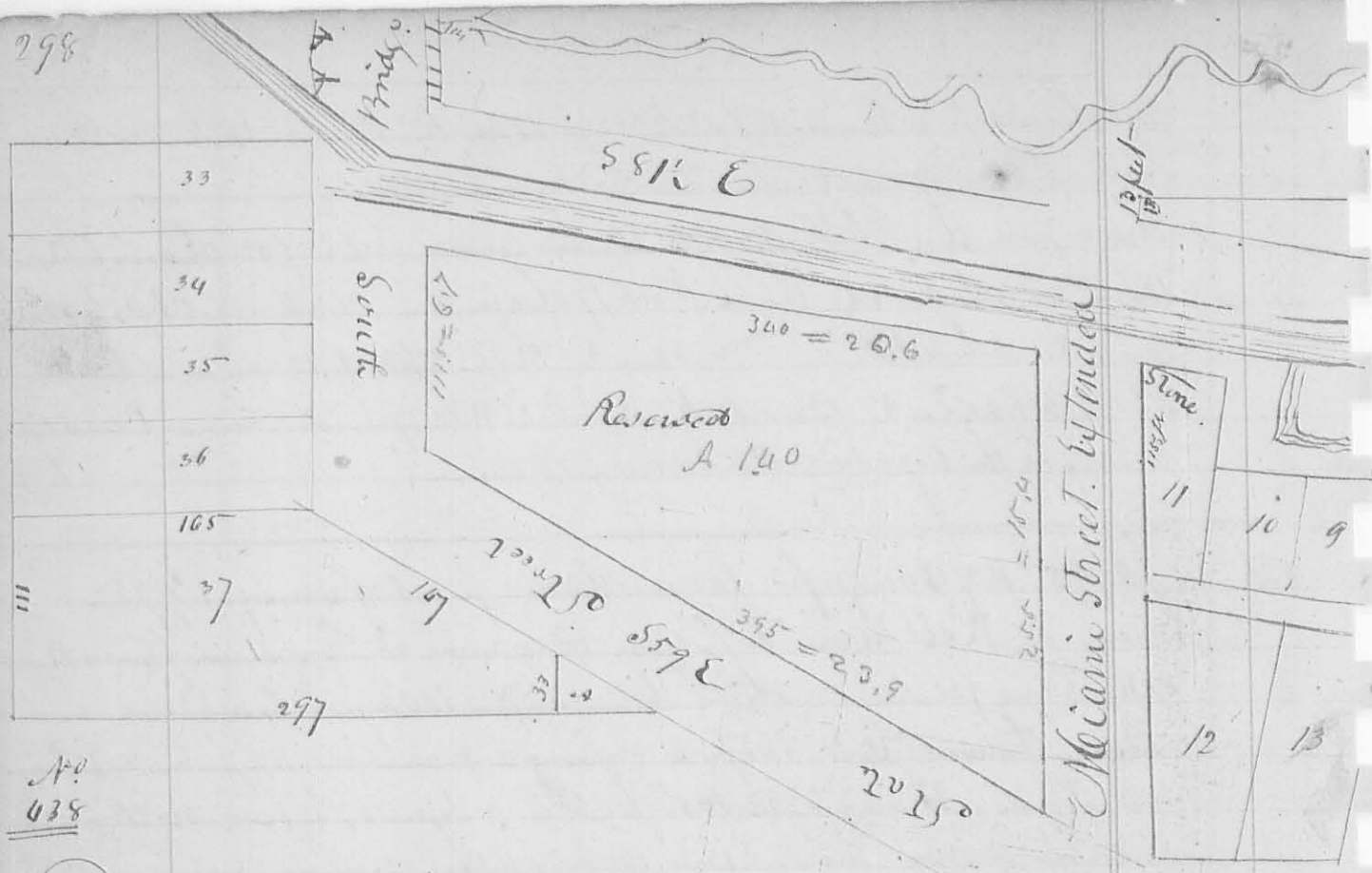
The foregoing plat represents an addition to Chambers addition to Quinay made by Chambers Jan. 1. 1839. The Survey continues from the former addition, on the same course, the lots all being 4 poles front by 8 poles back, excepting N^o 24.5 which front only 5 poles.

L. S. H. P. Kins Co. S. L. C. O.

435

8444

Survey Jan. 1. 1839 for Man. Lov. Chambers, part of the 1/4 quarter of S. 28. 73. 12. 13 m. R. as follow: Beginning at a Buck 6 L. S. 51 W. 7. and Buck 6 L. S. 58 E. 11 Links East of the SW corner of said q. 2. 80 ch. thence N. 1/2 E. 11. 7 chains to an Ash 3 L. S. East 24 links. Buck Oak 15 L. S. N. 11 W. 17 Links thence East 17 chain to a Buck 8 L. S. N. 18 E. 25 Links White Oak 48 L. S. N. 45 W. 7 Links, thence S. W.



A:
638
8443

Note: This Survey should have been Run to the 1833. but was not taken.

The foregoing plat Represents Heriman's Addition to Quincy made Dec. 15th 1838, Lots N^o 1 to 6 inclusive front on Canal Street, (which is 77¹/₂ feet wide) 50 feet, and extend to Prospect alley 115¹/₂ feet, (the said alley being 16¹/₂ feet), N^o 7 to 10 inclusive front on the Basin 50 feet, and extend back 66 feet, N^o 11 fronts Canal Street 45 feet, extending with Miami Street of the old town, extending 115¹/₂ feet, and is 27 feet wide in the alley, N^o 12 is 77 feet in the alley, and 47 on Walnut Street of the old town, N^o 13 to 21 inclusive front on Prospect alley 50 feet, and extend to Walnut Street, N^o 22 fronts the alley 20 feet extending on Poplar Street 78¹/₂ feet, N^o 23 to 28 inclusive front Canal Street, 50 feet, and extend as marked, 33 to 36 inclusive front State Street 50 feet, extending back due West 165 feet, N^o 37 as described, A is not numbered, therefore not considered as part of the plat, Canal Street N^o 81¹/₂ N^o from its eastern end, and all the lots fronting on it, extend at right angle from it - A W Corner of N^o 11, pleasture Stone, thence N 81¹/₂ W 28 pole finds the corner between N^o 33 & 34. Canal Street is 49¹/₂ feet on south side of the Canal, N side is 12 feet and ten parts. D. Nipkin S. L. C. O.

Meigam River



439. Survey for George ^{Land} Naylor February 11. 1839 part of
 S 34. T 4. R 14 W. then S 1 W 4.18 chain to stake in a
 pond then S 89 1/2 E 4.18 ch to a White Oak 18 L & S 87 1/2 E
 18 Links; then S 1 E 4.18 chain to a White Oak 18 L & W
 N 33 E 7/8 Links; then N 89 1/2 W 4.18 to the beginning Contain-
 ing 1 1/4 acres. L. N. Naylor & Co. Surveyors

440. Survey February 12. 1839 for Jacob F. Powell, Beginning
 S 89 1/2 E 52 poles from the NW Corner of S 34. T 4. R 14 W. then
 S 2 W 15 chain crossing a branch at 47 poles to a stem; then
 S 89 1/2 E 3.33 chain to a stem from which a hickory 4 L & W
 bears N 10 W 20 Links; then N 2 W 15 chain crossing a run
 to a stem in a Big Road; then N 89 1/2 W 3.33 chain to the
 beginning. Containing 5 acres, part of the North
 West quarter of said S 34. —

L. N. Naylor & Co. Surveyors

8447

The South line, as thus corrected, runs from the S.W. corner, (the beginning in the original report (see page 248 of this book) S. 89° E. $40^{\frac{5}{100}}$ chains, to a Stone, from which a Shell bark Hickory 22 In. Dir. bears N. $21^{\frac{1}{2}}$ E. 29 links; a Beech 15 In. Dir. S. $74^{\frac{1}{2}}$ W. 22 links; a Bur Oak 10 In. Dir. N. 32° E. $79^{\frac{1}{2}}$ links, & a Beech 13 In. Dir. S. 38° E. 45 links, distant. The East line is lengthened 115 links, retaining the same bearing making it N. $1^{\frac{1}{2}}$ E. $43^{\frac{81}{100}}$ chains—

A lot for a watering privilege, sold out of the south side of said section is also represented by red ink, which is 3 chains (or 12 poles) square, and at right angles with the corrected line, the S.W. corner of which is East $18^{\frac{50}{100}}$ chains from the S.W. corner of the section.

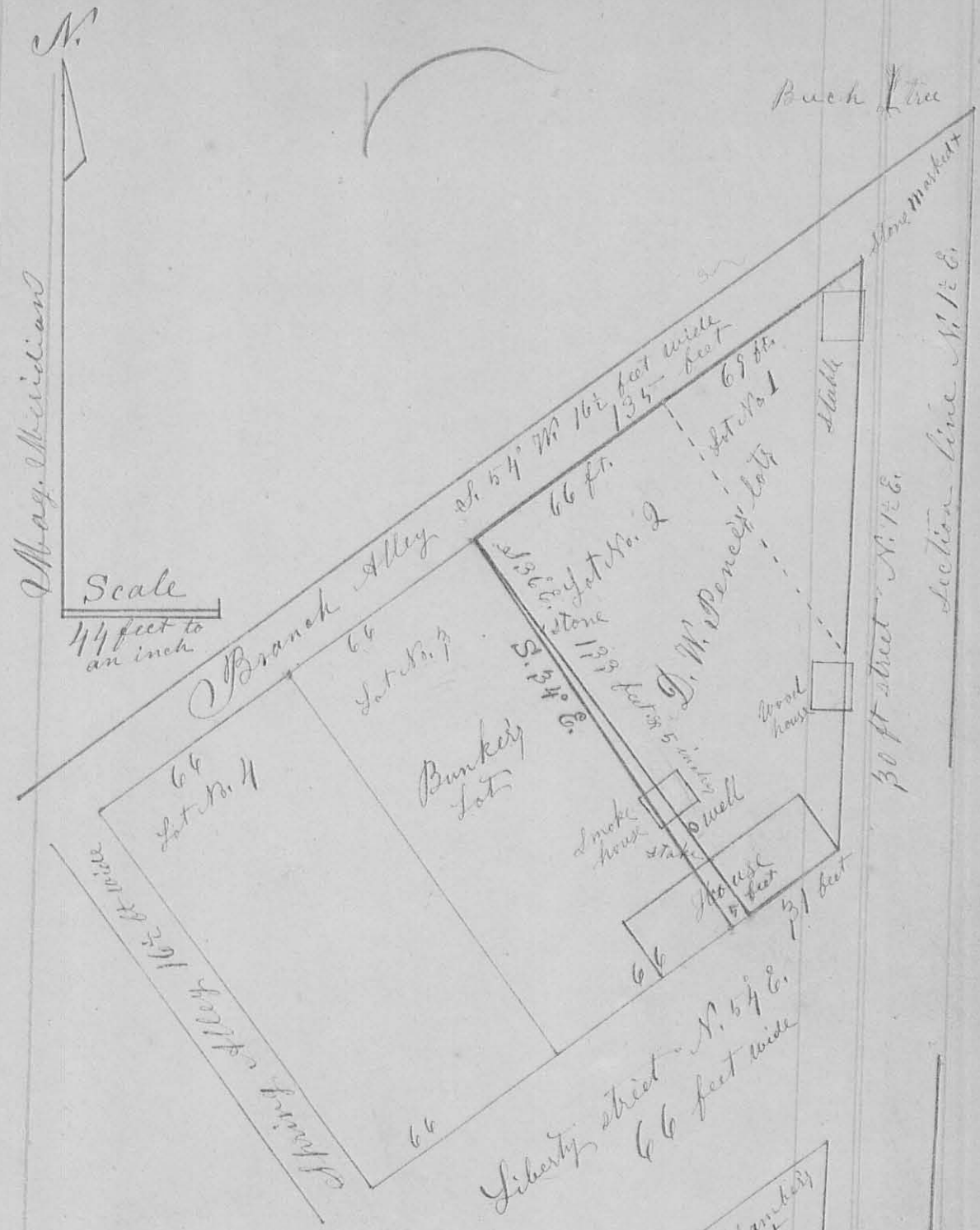
The change of this line adds $2^{\frac{34}{100}}$ Acres to the area of this half of the section, The water privilege lot takes off $\frac{9}{10}$ of an acre thus making Mc Allis' land to contain $156^{\frac{33}{100}}$ Acres— instead of $154^{\frac{89}{100}}$ Acres as per the former survey—
H. C. Moore,
Co. Surveyor of Logan Co. Ohio

8443

Survey, No. 796. V

Surveyor's Office, Bellefontaine
Ohio, Nov. 5th A. S. 1858

The Plat on the next, or opposite page, represents Lots Nos. One & Two, of the Western Addition to the Town of Quincy of Logan Co. & State of Ohio, (together with their relative position, with the adjacent part of said addition) as surveyed by me, H. C. Moore County Surveyor of said County of Logan, on the 15th day of October A. S. 1858. by the



Request of Daniel M. Pence, of said town, for the purpose of establishing the line between Lots Nos. Two & Three of said addition (of opposite parties having notice thereof) -

Beginning at a stone, marked thus + on the top, at the N.E. corner of said lot No. one, from which a Beech 18 in. Dia. bears N. 1/2 E. 68 links, run thence with the South side of Branch Alley, & the North end of said lot No. one & two

S. 54° W. 135 feet to a stake, (Original call is
 S. 53° W. 135 feet, variation of bearing 1° to the East.)
 Thence S. 36° E. planting a stone at about 33 feet,
 passing through a smoke house, and by
 the west side of a well, and driving a stake
 at the North side of the dwelling house, and
 passing through said dwelling house to the
 south side thereof, 133⁵/₈ feet, (Original call, is
 S. 37° E. 132 feet, variation of bearing is 1 to the East)
 Thence N. 54° E. 31 feet to the S. E. corner of
 said dwelling house, & in the west side of a
 30 foot street, (Original call N. 53° E. 36 feet,
 variation of bearing, 1° E.) Thence N. 1/2° E., passing
 through the east side of a wood house & a
 stable, to the place of beginning (original
 call N. 1/2° E., variation of bearing 1° E.) —

Observations — 1st To give lot No. 2, 36 feet front
 on Liberty street, the original call, would
 cause the West line of the lot to bear
 S. 3 1/2° E., which would be two degrees more than
 the usual variation of compass, & two more
 than is found in any other part of this
Addition;

2nd — By running as per the foregoing plat, all
 the other lots on the N. side of Liberty
 Street will have their full front of 66 feet
and no more, & all will be full on the North
 end; while lot No. 2 alone, will fall
 short 5 feet in front;

3rd To change from this plat, except by running
 E. into the 30 foot street, would make, at
 least, two errors in the original plat
 instead of one.

Manlove Chambers, Chain-Man
 & Joseph Leigh

I hereby certify that the foregoing plat
 and report are correct. H. C. Moore, Co. Surveyor
 of Logan County Ohio